

UNITED STATES
DEPARTMENT OF THE INTERIOR
GEOLOGICAL SURVEY

APPLICATION FOR PERMIT TO DRILL, DEEPEN, OR PLUG BACK

1a. TYPE OF WORK

DRILL ☒DEEPEN ☐PLUG BACK ☐

b. TYPE OF WELL

OIL
WELL ☒GAS
WELL ☐OTHER ☐SINGLE
ZONE ☐MULTIPLE
ZONE ☐

2. NAME OF OPERATOR

Union Texas Petroleum Corporation

3. ADDRESS OF OPERATOR

P.O. Box 1290, Farmington, New Mexico 87499

4. LOCATION OF WELL (Report location clearly and in accordance with any State requirements.*)

At surface 1768 ft./South; 2235 ft./East Lines

At proposed prod. zone Same as Above

14. DISTANCE IN MILES AND DIRECTION FROM NEAREST TOWN OR POST OFFICE*

1/2 mile Northwest of Lybrook, New Mexico

15. DISTANCE FROM PROPOSED* LOCATION TO NEAREST

PROPERTY OR LEASE LINE, FT.
(Also to nearest drlg. unit line, if any) 405 ft.

16. NO. OF ACRES IN LEASE

160.00

15. DISTANCE FROM PROPOSED* LOCATION TO NEAREST WELL, DRILLING, COMPLETED, OR APPLIED FOR, ON THIS LEASE, FT.

1745 ft.

19. PROPOSED DEPTH

6720 ft.

17. NO. OF ACRES ASSIGNED TO THIS WELL

Gallup: 40.00; Dakota: 40.00

20. ROTARY OR CABLE TOOLS

Rotary

21. ELEVATIONS (Show whether DF, RT, GR, etc.)

7229' GR

DRILLING OPERATIONS AUTHORIZED ARE
SUBJECT TO THE FOLLOWING CONDITIONS:

23.

"PROPOSED CASING AND CEMENTING PROGRAM"

22. APPROX. DATE WORK WILL START*

November 1, 1983

This action is subject to administrative
appeal pursuant to 30 CFR 290.

SIZE OF HOLE	SIZE OF CASING	WEIGHT PER FOOT	SETTING DEPTH	QUANTITY OF CEMENT
12-1/4"	8-5/8"	24.0# J-55	300 ft.	240 cu.ft. (circulated)
7-7/8"	4-1/2"	11.6# K-55	6720 ft.	2600 cu.ft. (circulated)

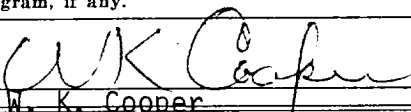
We desire to drill 12-1/4" surface hole to approximately 300 ft. using natural mud as a circulating medium. Run new 8-5/8", 24.0#, J-55 casing to TD. Cement with approximately 240 cu.ft. C1 "B" cement circulated to surface. Pressure test the casing to 800 PSIG. Drill 7-7/8" hole to TD of approximately 6720 ft. using a permaloid, nondispersed mud as the circulating medium. Log the well. Run new 4-1/2", 11.6#, K-55 casing to TD with DV tool at approximately 2100 ft. Cement first stage with approximately 1300 cu. ft. of 65/35/6 followed by 100 cu.ft. 50/50 Poz mix. Cement second stage with approximately 1200 cu.ft. 65/35/12 Poz circulated to surface. Drill out the DV tool and pressure test the casing to 1500 PSIG. Perforate, fracture, and test the Dakota zone. Set a bridge plug at approximately 6440 ft. Perforate, fracture, and test the Gallup zone. Drill out bridge plug and commingle production upon approval of the State Oil Conservation Commission. Run rod pump and rods. Set a pumping unit and tanks. Connect to a gathering system. The gas from this well has not been dedicated.

NOTE: Actual cement volumes will be calculated from caliper log.

IN ABOVE SPACE DESCRIBE PROPOSED PROGRAM: If proposal is to deepen or plug back, give data on present productive zone and proposed new productive zone. If proposal is to drill or deepen directionally, give pertinent data on subsurface locations and measured and true vertical depths. Give blowout preventer program, if any.

24.

SIGNED



TITLE Field Operations Mgr.

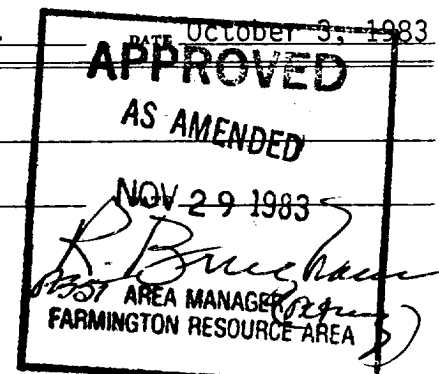
(This space for Federal or State office use)

PERMIT NO.

APPROVED BY

CONDITIONS OF APPROVAL, IF ANY:

TITLE

RECEIVED
DEC 1 - 1983N.M. DIV. I
DIST. 3

All distances must be from the outer boundaries of the Section.

Operator UNION TEXAS PETROLEUM CORPORATION			Lease DUNN		Well No. 2
Unit Letter J	Section 9	Township 23 NORTH	Range 7 WEST	County RIO ARriba	

Actual Footage Location of Well:

1768 feet from the SOUTH line and 2235 feet from the EAST line	
Ground Level Elev. 7229	Producing Formation GALLUP - Dakota
Pool LYBROOK - Undesignated	Dedicated Acreage Gallup: NW SE 40.00 Acres

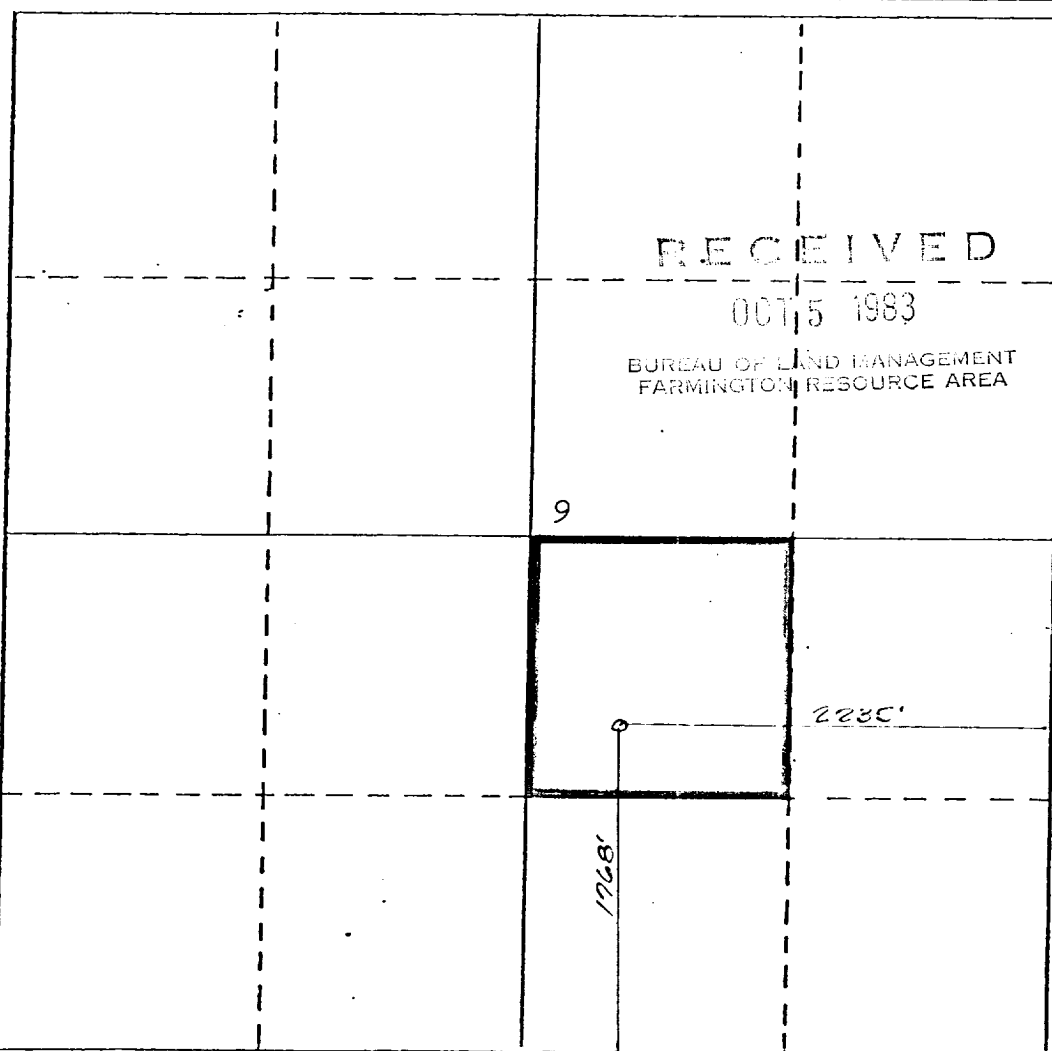
1. Outline the acreage dedicated to the subject well by colored pencil or hachure marks on the plat below.
2. If more than one lease is dedicated to the well, outline each and identify the ownership thereof (both as to working interest and royalty).
3. If more than one lease of different ownership is dedicated to the well, have the interests of all owners been consolidated by communitization, unitization, force-pooling, etc?

☐ Yes ☐ No If answer is "yes," type of consolidation _____

If answer is "no," list the owners and tract descriptions which have actually been consolidated. (Use reverse side of this form if necessary.) _____

No allowable will be assigned to the well until all interests have been consolidated (by communitization, unitization, forced-pooling, or otherwise) or until a non-standard unit, eliminating such interests, has been approved by the Division

RECEIVED
OCT 1983



CERTIFICATION

I hereby certify that the information contained herein is true and complete to the best of my knowledge and belief.

Name
Rudy D. Motto
Position
Area Operations Manager
Company
Union Texas Petroleum Corp.
Date
August 22, 1983

I hereby certify that the well location shown on this plat was plotted from field notes of actual surveys made by me or under my supervision and that the same is true and correct to the best of my knowledge and belief.

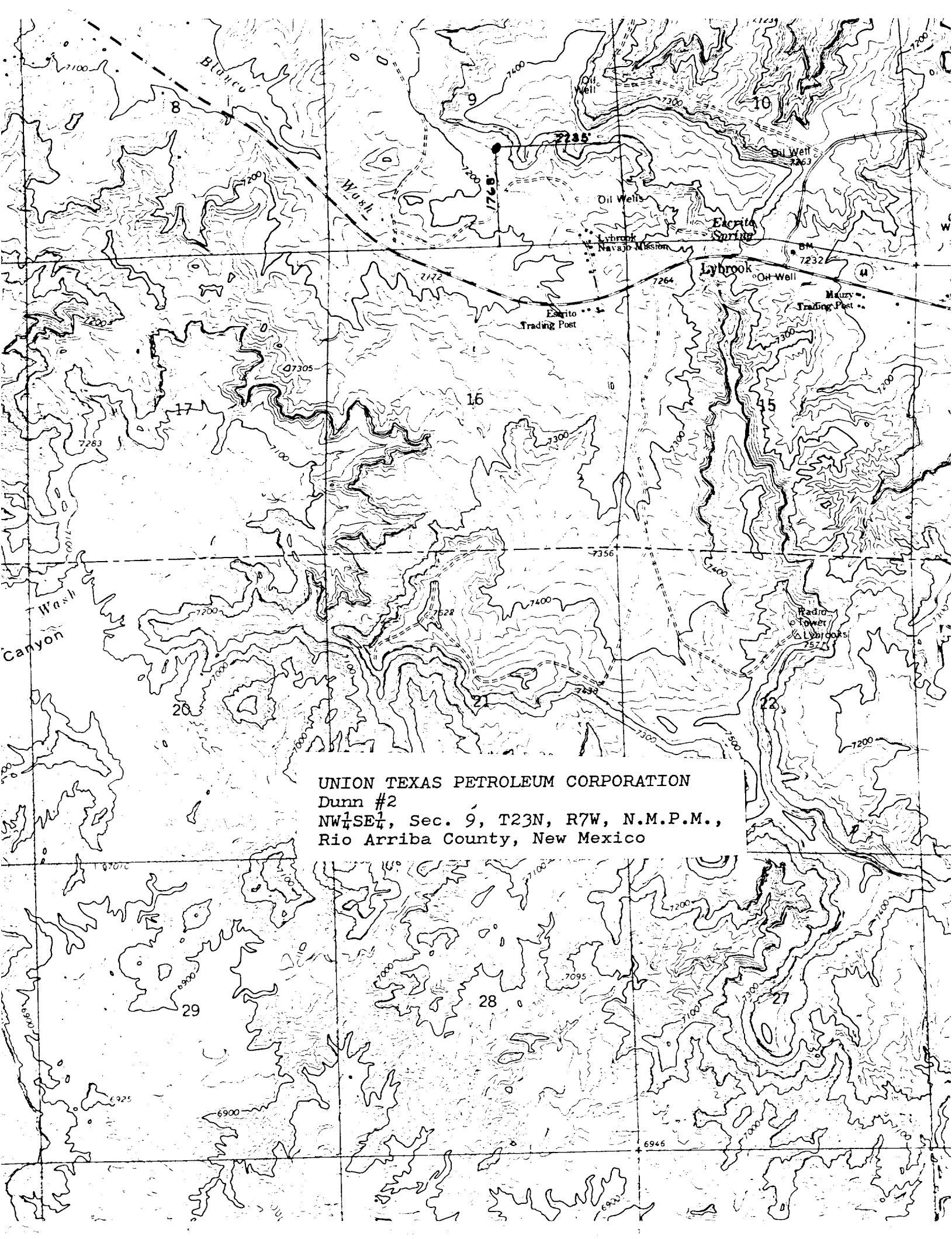
Date Surveyed
August 3, 1983
Registered Professional Engineer and/or Land Surveyor

Michael Daly

Certificate No.

5992

0 330 660 990 1320 1650 1980 2310 2640 2970 3300 3630 3960 4290 4620 4950 5280 5610 5940 6270 6600



UNION TEXAS PETROLEUM CORPORATION
Dunn #2
NW $\frac{1}{4}$ SE $\frac{1}{4}$, Sec. 9, T23N, R7W, N.M.P.M.,
Rio Arriba County, New Mexico