

UNITED STATES  
DEPARTMENT OF THE INTERIOR  
BUREAU OF LAND MANAGEMENT

APPLICATION FOR PERMIT TO DRILL, DEEPEN, OR PLUG BACK

1a. TYPE OF WORK

DRILL ☒

DEEPEN ☐

PLUG BACK ☐

b. TYPE OF WELL

OIL  
WELL ☒

GAS  
WELL ☐

OTHER

SINGLE  
ZONE ☐

MULTIPLE  
ZONE ☒

2. NAME OF OPERATOR

Chace Oil Company

3. ADDRESS OF OPERATOR

313 Washington, S.E., Albuquerque, NM 87108

4. LOCATION OF WELL (Report location clearly and in accordance with any State requirements.)\*

At surface

Unit 'E' 1818' FNL & 582' FWL

At proposed prod. zone

14. DISTANCE IN MILES AND DIRECTION FROM NEAREST TOWN OR POST OFFICE\*

17 miles W-SW of Lindrith, New Mexico

10. DISTANCE FROM PROPOSED LOCATION TO NEAREST PROPERTY OR LEASE LINE, FT.  
(Also to nearest drilg. unit line, if any)

3462' from lease line.  
498' from unit line

18. DISTANCE FROM PROPOSED LOCATION\* TO NEAREST WELL, DRILLING, COMPLETED, OR APPLIED FOR, ON THIS LEASE, FT.

1200'

21. ELEVATIONS (Show whether DF, RT, GR, etc.)

7199' GR

23. PROPOSED CASING AND CEMENTING PROGRAM

SIZE OF HOLE	SIZE OF CASING	WEIGHT PER FOOT	SETTING DEPTH	QUANTITY OF CEMENT
12 1/4"	8 5/8"	24#(J-55)	225'	225 SxS (405 CF) Class B cemen
7 7/8"	4 1/2"	11.6#(N-80)	7470'	1st stage: 750 SxS (1350 CF) 50/50 pozmix 2nd stage: 505 SxS (909 CF) 40/60 pozmix, 12% gel 40 SxS(72 CF) Class B Cement

Drill 230' of 12 1/4" surface hole. Set 225' of 8 5/8" casing. Cement to surface with 225 SxS (405 CF) cement. Use an oil base mud, (15% oil) and Schaeffer standard doublegate hydraulic BOP.

Drill 7 7/8" hole to 7470' to test the Dakota Formation. Logging Program: Run Dil, Caliper, GR, SP, FDC-CNL from T.D. to surface.

Estimated Tops:

Ojo Alamo	2463'	Pt. Lookout	5001'	Dakota 'A'	7149'
Picture Cliffs	2897'	Gallup	5729'	Dakota 'D'	7271'
Chacra	3261'	Tocito	6741'	Burro Canyon	7377'
Cliff House	4429'	Greenhorn	7051'		

IN ABOVE SPACE DESCRIBE PROPOSED PROGRAM: If proposal is to deepen or plug back, give data on present productive zone and proposed new productive zone. If proposal is to drill or deepen directionally, give pertinent data on subsurface locations and measured and true vertical depths. Give blowout preventer program, if any.

24. SIGNED Monte Anderson TITLE Geologist

(This space for Federal or State use)

PERMIT NO.

APPROVAL DATE

APPROVED BY

CONDITIONS OF APPROVAL, IF ANY:

OIL CON. DIV.  
DIST. 3

TITLE

NMOCC

\*See Instructions On Reverse Side

APPROVED 4

AS AMENDED

AUG 28 1984

DATE

/s/ J. Stan McKee  
ASST. AREA MANAGER  
FARMINGTON RESOURCE AREA

All distances must be from the outer boundaries of the Section.

Operator <b>CHACE OIL COMPANY</b>			Lease <b>JICARILLA Tribe / Contract # 71-36</b>		Well No.
Unit Letter <b>E</b>	Section <b>10</b>	Township <b>23 NORTH</b>	Range <b>4 WEST</b>	County <b>RIO ARriba</b>	

Actual Footage Location of Well:

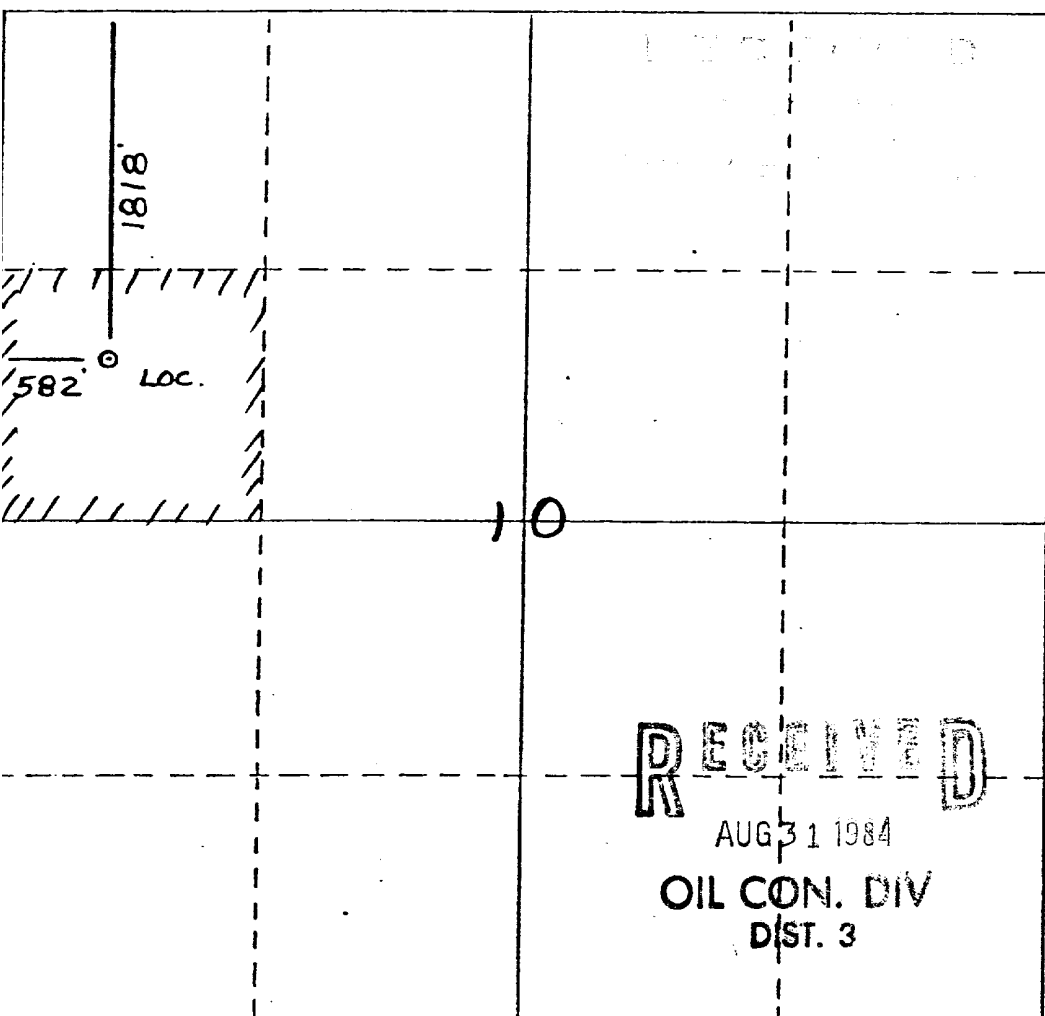
<b>1818</b>	feet from the <b>NORTH</b>	line and	<b>582</b>	feet from the <b>WEST</b>	line
Ground Level Elev. <b>7199</b>	Producing Formation <b>Gallup - Dakota</b>		Pool <b>South Lindrith</b>	Dedicated Acreage: <b>40</b>	

1. Outline the acreage dedicated to the subject well by colored pencil or hachure marks on the plat below.
2. If more than one lease is dedicated to the well, outline each and identify the ownership thereof (both as to working interest and royalty).
3. If more than one lease of different ownership is dedicated to the well, have the interests of all owners been consolidated by communitization, unitization, force-pooling, etc?

☐ Yes ☐ No If answer is "yes," type of consolidation \_\_\_\_\_

If answer is "no," list the owners and tract descriptions which have actually been consolidated. (Use reverse side of this form if necessary.) \_\_\_\_\_

No allowable will be assigned to the well until all interests have been consolidated (by communitization, unitization, forced-pooling, or otherwise) or until a non-standard unit, eliminating such interests, has been approved by the Division



## CERTIFICATION

I hereby certify that the information contained herein is true and complete to the best of my knowledge and belief.

Name  
**Monte Anderson**

Position  
**Geologist**

Company  
**Chace Oil Co., Inc.**

Date  
**8-2-84**

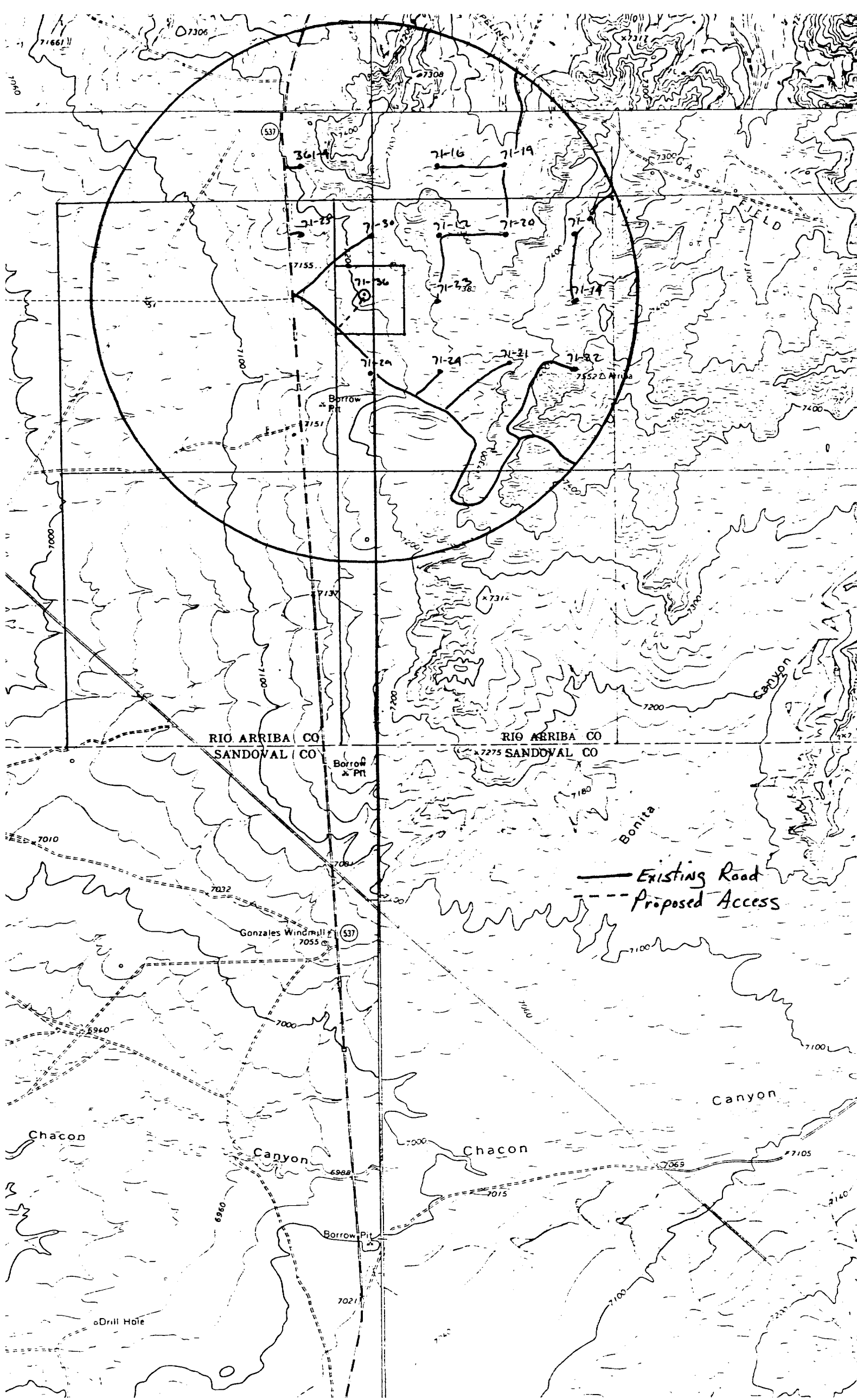
I hereby certify that the well location shown on this plat was plotted from field notes of actual surveys made by me or under my supervision, and that the same is true and correct to the best of my knowledge and belief.

Date Surveyed  
**6-28-84**

Registered Professional Engineer  
and/or Land Surveyor

**Neale C. Edwards**

Certificate No.  
**6857**



— Existing Road  
--- Proposed Access