

UNITED STATES
DEPARTMENT OF THE INTERIOR
BUREAU OF LAND MANAGEMENT

APPLICATION FOR PERMIT TO DRILL, DEEPEN, OR PLUG BACK

1a. TYPE OF WORK

DRILL ☒

DEEPEN ☐

PLUG BACK ☐

b. TYPE OF WELL

OIL
WELL ☒

GAS
WELL ☐

OTHER

SINGLE
ZONE ☐

MULTIPLE
ZONE ☐

2. NAME OF OPERATOR

JACK A. COLE

3. ADDRESS OF OPERATOR

P. O. BOX 191, FARMINGTON, N.M. 87499

4. LOCATION OF WELL (Report location clearly and in accordance with any State requirements.)*

At surface 600' FNL, 600' FWL

At proposed prod. zone SAME

14. DISTANCE IN MILES AND DIRECTION FROM NEAREST TOWN OR POST OFFICE*

4 MILES FROM COUNSELORS TRADING POST

15. DISTANCE FROM PROPOSED*

LOCATION TO NEAREST
PROPERTY OR LEASE LINE, FT.
(Also to nearest drlg. unit line, if any) 600'

16. NO. OF ACRES IN LEASE

1940 5461.69

17. NO. OF ACRES ASSIGNED
TO THIS WELL

160

18. DISTANCE FROM PROPOSED LOCATION*
TO NEAREST WELL, DRILLING, COMPLETED,
OR APPLIED FOR, ON THIS LEASE, FT.

2400'

19. PROPOSED DEPTH

5650'

20. ROTARY OR CABLE TOOLS

ROTARY

21. ELEVATIONS (Show whether DF, RT, GR, etc.)

6882' GR

DRILLING OPERATIONS AUTHORIZED ARE
SUBJECT TO COMPLIANCE WITH ATTACHED
"GENERAL REQUIREMENTS"

22. APPROX. DATE WORK WILL START*

SEPTEMBER 10, 1985

23.

PROPOSED CASING AND CEMENTING PROGRAM
This action is subject to technical and
procedural review pursuant to 43 CFR 3165.3
and appeal pursuant to 43 CFR 3165.4.

SIZE OF HOLE	SIZE OF CASING	WEIGHT PER FOOT	SETTING DEPTH	QUANTITY OF CEMENT
12-1/2"	8-5/8"	24.0 J-55	250'	295 CU. FT.
7-7/8"	4-1/2"	10.50 K-55	5650'	TO BE DETERMINED AFTER LOGGING

ALL PRODUCING INTERVALS IN GALLUP FORMATION WILL BE STIMULATED AS NECESSARY.
EXHIBITS:

"A" LOCATION AND ELEVATION PLOT
"B" TEN POINT COMPLIANCE PROGRAM
"C" BLOWOUT PREVENTOR DIAGRAM
"D" MULTI-POINT REQUIREMENTS OF APD

"E" ACCESS ROAD TO LOCATION
"F" DRILL RIG LAYOUT
"G" FRACTURING PROGRAM LAYOUT
"H" LOCATION PROFILE

THE GAS FOR THIS WELL IS COMMITTED.

THE NW 1/4, 160 ACRES, SECTION 17-T23N-R6W IS DEDICATED TO THIS WELL.

IN ABOVE SPACE DESCRIBE PROPOSED PROGRAM: If proposal is to deepen or plug back, give data on present productive zone and proposed new productive zone. If proposal is to drill or deepen directionally, give pertinent data on subsurface locations and measured and true vertical depths. Give blowout preventer program, if any.

24.

SIGNED

Debra Blum

TITLE

PRODUCTION SUPERINTENDENT

DATE

JULY 25, 1985

(This space for Federal or State office use)

PERMIT NO.

APPROVAL DATE

APPROVED BY

TITLE

CONDITIONS OF APPROVAL, IF ANY:

APPROVED
AS AMENDED

SEP 05 1985

NMOC

*See Instructions On Reverse Side

M. MILLENBACH
AREA MANAGER

NEW MEXICO OIL CONSERVATION COMMISSION
WELL LOCATION AND ACREAGE DEDICATION PLAT

Form C-102
Supersedes C-128
Effective 1-1-65

All distances must be from the outer boundaries of the Section.

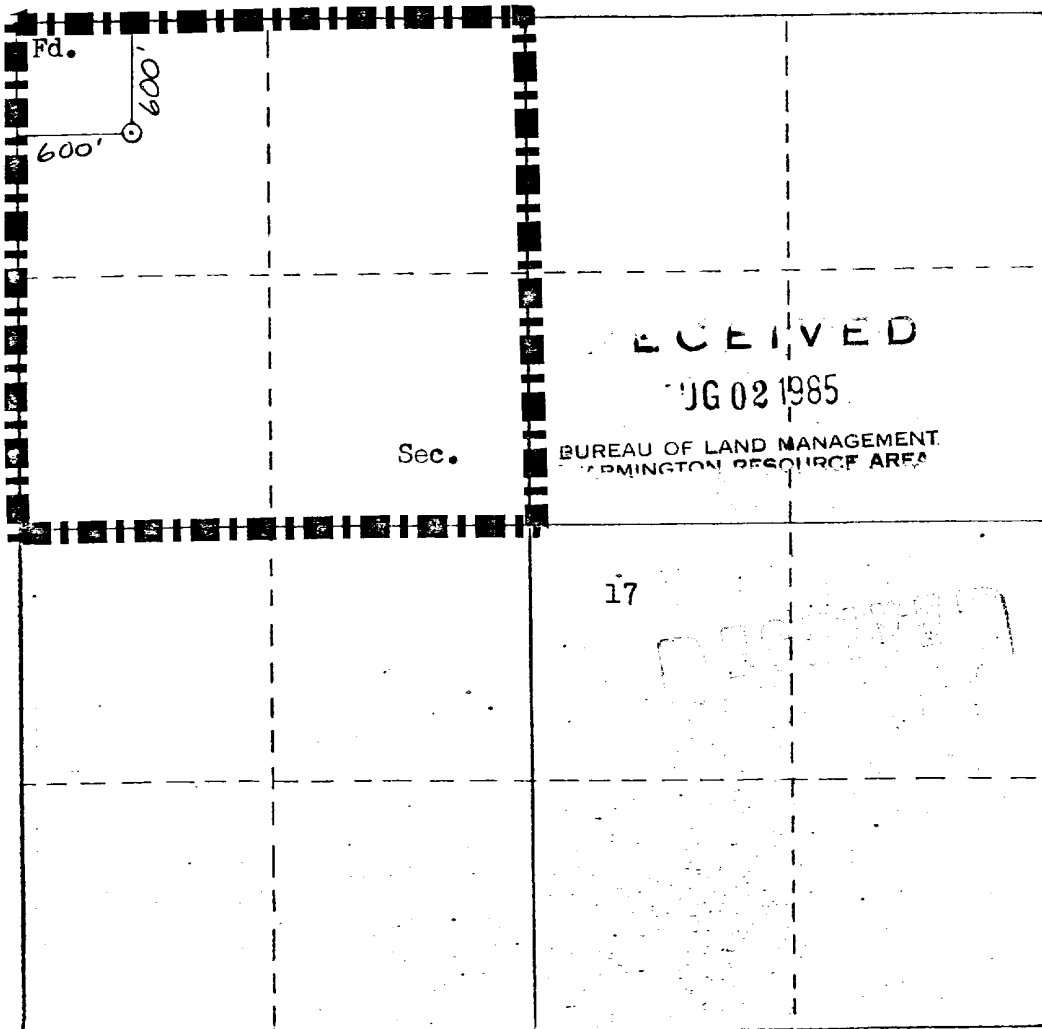
Operator JACK A. COLE		Lease MARCUS "A"		Well No. 3
Unit Letter D	Section 17	Township 23N	Range 6W	County Rio Arriba
Actual Footage Location of Well: 600 feet from the North line and 600 feet from the West line				
Ground Level Elev. 6882	Producing Formation GALLUP	Pool COUNSELORS GALLUP-DAKOTA	Dedicated Acreage: 160 Acres	

1. Outline the acreage dedicated to the subject well by colored pencil or hatchure marks on the plat below.
2. If more than one lease is dedicated to the well, outline each and identify the ownership thereof (both as to working interest and royalty).
3. If more than one lease of different ownership is dedicated to the well, have the interests of all owners been consolidated by communitization, unitization, force-pooling, etc?

☐ Yes ☐ No If answer is "yes," type of consolidation _____

If answer is "no," list the owners and tract descriptions which have actually been consolidated. (Use reverse side of this form if necessary.) _____

No allowable will be assigned to the well until all interests have been consolidated (by communitization, unitization, forced-pooling, or otherwise) or until a non-standard unit, eliminating such interests, has been approved by the Commission.



CERTIFICATION

I hereby certify that the information contained herein is true and complete to the best of my knowledge and belief.

Dewayne Blancett
DEWAYNE BLANCETT

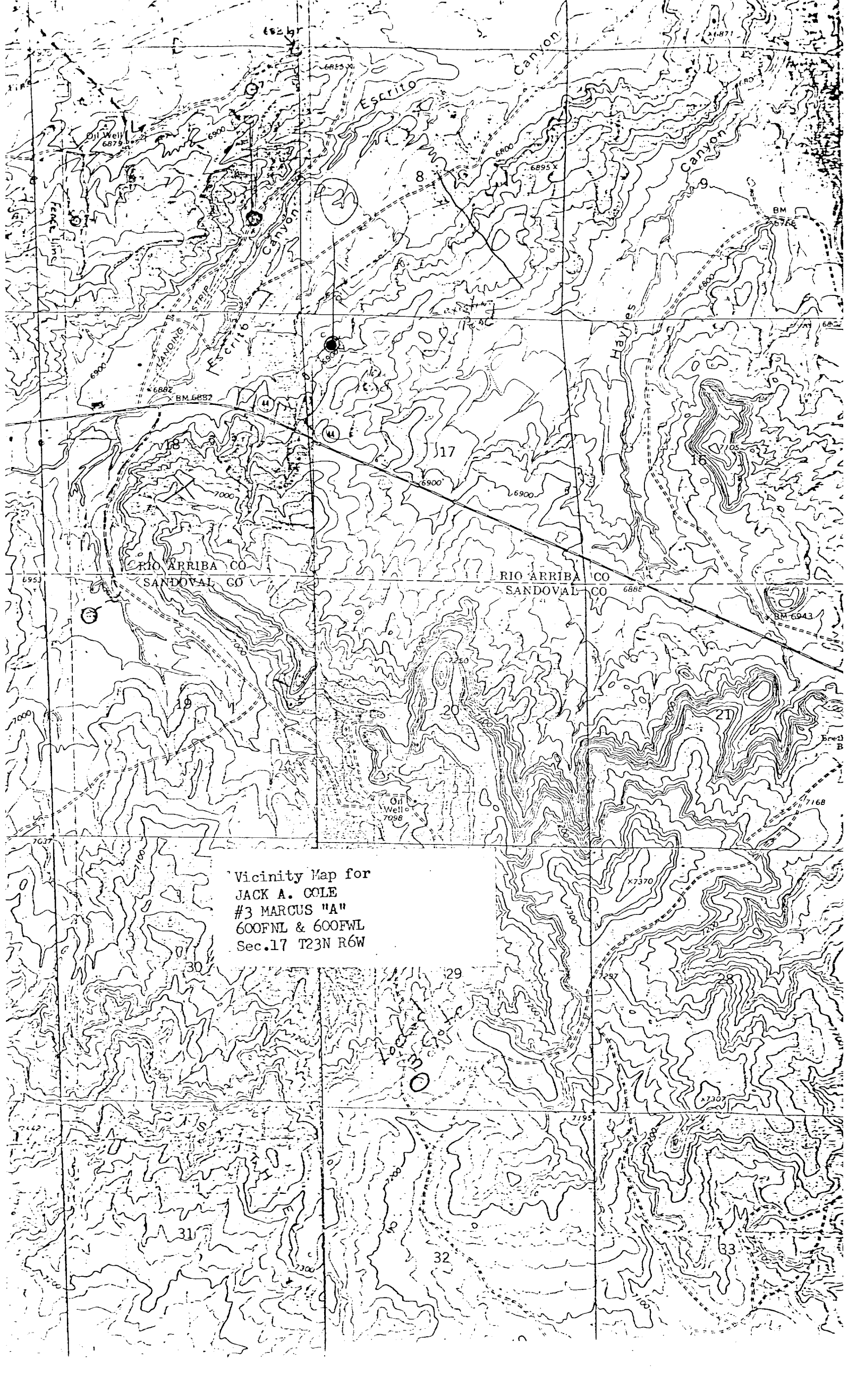
Position
PRODUCTION SUPERINTENDENT

Company
COLE PRODUCTION COMPANY

Date
JULY 25, 1985

I hereby certify that the well location shown on this plat was plotted from field notes of actual surveys made by me or under my supervision, and that the same is true and correct to the best of my knowledge and belief.

Date Surveyed
JULY 25, 1985
Willard E. Hinkle
Registered Professional Engineer and Professional Land Surveyor
#8466
NEW MEXICO
REGISTERED PROFESSIONAL LAND SURVEYOR
WILLARD E. HINKLE



Vicinity Map for
JACK A. COLE
#3 MARCUS "A"
600FNL & 600FWL
Sec.17 T23N R6W