

6 BLM 1 4/C Expl. 1 File
**UNITED STATES
DEPARTMENT OF THE INTERIOR
GEOLOGICAL SURVEY**

SUBMIT IN TRIPLICATE*
(Other instructions on reverse side)

Form approved.
Budget Bureau No. 42-B1425.

30-039-23944

APPLICATION FOR PERMIT TO DRILL, DEEPEN, OR PLUG BACK

1a. TYPE OF WORK

DRILL ☒

DEEPEN ☐

PLUG BACK ☐

b. TYPE OF WELL

OIL WELL ☒

GAS WELL ☐

OTHER

SINGLE ZONE ☒

MULTIPLE ZONE ☐

2. NAME OF OPERATOR

FOUR CORNERS EXPLORATION CO.

3. ADDRESS OF OPERATOR

P O Box 208, Farmington, NM 87499

4. LOCATION OF WELL (Report location clearly and in accordance with any State requirements*)

At surface

950' FSL - 760' FWL

At proposed prod. zone

14. DISTANCE IN MILES AND DIRECTION FROM NEAREST TOWN OR POST OFFICE*

approx. 7 miles NW of Counselors, NM

BUREAU OF LAND MANAGEMENT
FARMINGTON RESOURCE AREA

15. DISTANCE FROM PROPOSED*

LOCATION TO NEAREST PROPERTY OR LEASE LINE, FT.
(Also to nearest drig. unit line, if any)

370'

16. NO. OF ACRES IN LEASE

160

17. NO. OF ACRES ASSIGNED TO THIS WELL

40

18. DISTANCE FROM PROPOSED LOCATION*

TO NEAREST WELL, DRILLING, COMPLETED, OR APPLIED FOR, ON THIS LEASE, FT.

approx. 700' from Byron Oil's Hanson Federal #1

19. PROPOSED DEPTH

5700'

20. ROTARY OR CABLE TOOLS

Rotary

21. ELEVATIONS (Show whether DF, RT, GR, etc.)

7070' GL; 7082' RKB

DRILLING OPERATIONS AUTHORIZED ARE
SUBJECT TO COMPLIANCE WITH ATTACHED
GENERAL REQUIREMENTS AND CEMENTING PROGRAM

22. APPROX. DATE WORK WILL START*

ASAP

23.

This action is subject to technical and procedural review pursuant to 43 CFR 3165.3 and appeal pursuant to 43 CFR 3165.4.

SIZE OF HOLE	SIZE OF CASING	WEIGHT PER FOOT	SETTING DEPTH	
12-1/4"	8-5/8"	24#	200'	159 cf circulated to surface
7-7/8"	4-1/2"	10.5#	5700'	1855 cf circulated to surface

Plan to drill a 12 1/4" hole and set 200' of 8-5/8" OD, 24#, J-55 surface casing; then plan to drill a 7-7/8" hole to total depth with gel-water-mud program to test Gallup formation. Plan to run IES and CDL logs. If determined productive, will run 4-1/2", 10.5#, J-55 casing, selectively perforate, frac, clean out after frac and complete well.

RECEIVED
FEB 20 1986
OIL CON. DIV.
DIST. 3

IN ABOVE SPACE DESCRIBE PROPOSED PROGRAM: If proposal is to deepen or plug back, give data on present productive zone and proposed new productive zone. If proposal is to drill or deepen directionally, give pertinent data on subsurface locations and measured and true vertical depths. Give blowout preventer program, if any.

24.

SIGNED

Barbara Williams
Barbara Williams

TITLE

Petroleum Engineer

DATE

2-3-86

(This space for Federal or State office use)

PERMIT NO.

APPROVAL DATE

APPROVED BY

TITLE

CONDITIONS OF APPROVAL, IF ANY:

DATE

AS AMENDED

(SGD.) MAT MILLENBACH
M. MILLENBACH
AREA MANAGER

*See Instructions On Reverse Side

NMOCC

All distances must be from the outer boundaries of the Section.

Operator Four Corners Exploration Company		Lease Lybrook		Well No. 3
Unit Letter M	Section 3	Township 23 North	Range 7 West	County Rio Arriba
Actual Footage Location of Well:				
950	feet from the	South	line and	760
				feet from the
				West
				line
Ground Level Elev. 7070	Producing Formation Gallup	Pool Lybrook Gallup	Dedicated Acreage: 40 Acres	

1. Outline the acreage dedicated to the subject well by colored pencil or hatchure marks on the plat below.
2. If more than one lease is dedicated to the well, outline each and identify the ownership thereof (both as to working interest and royalty).
3. If more than one lease of different ownership is dedicated to the well, have the interests of all owners been consolidated by communitization, unitization, force-pooling, etc?

☐ Yes ☐ No If answer is "yes," type of consolidation _____

If answer is "no," list the owners and tract descriptions which have actually been consolidated. (Use reverse side of this form if necessary.) _____

No allowable will be assigned to the well until all interests have been consolidated (by communitization, unitization, forced-pooling, or otherwise) or until a non-standard unit, eliminating such interests, has been approved by the Division

<p>RECEIVED</p> <p>FEB 05 1986</p> <p>BUREAU OF LAND MANAGEMENT</p> <p>STANDARD RESOURCE AREA</p>		<p>SEC. 3</p>	
		<p>RECEIVED</p> <p>FEB 26 1986</p> <p>OIL CON. DIV.</p> <p>DIST. 3</p>	
<p>Four Corners</p> <p>760'</p> <p>950'</p> <p>Exploration Co.</p> <p>LS.# NM 080273</p>			

CERTIFICATION

I hereby certify that the information contained herein is true and complete to the best of my knowledge and belief.

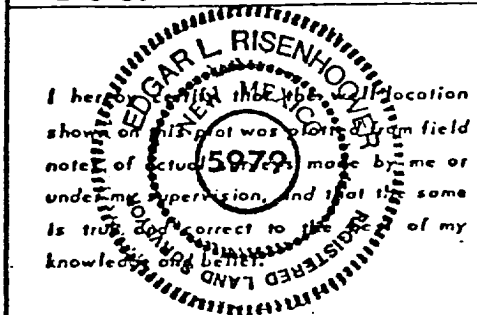
Sherman E. Dugan
Name
Sherman E. Dugan

Position
Geologist

Company
Dugan Production Corp.

Date
2-3-86

I hereby certify that the location shown on this plat was plotted from field notes of actual surveys made by me or under my supervision, and that the same is true and correct to the best of my knowledge and belief.

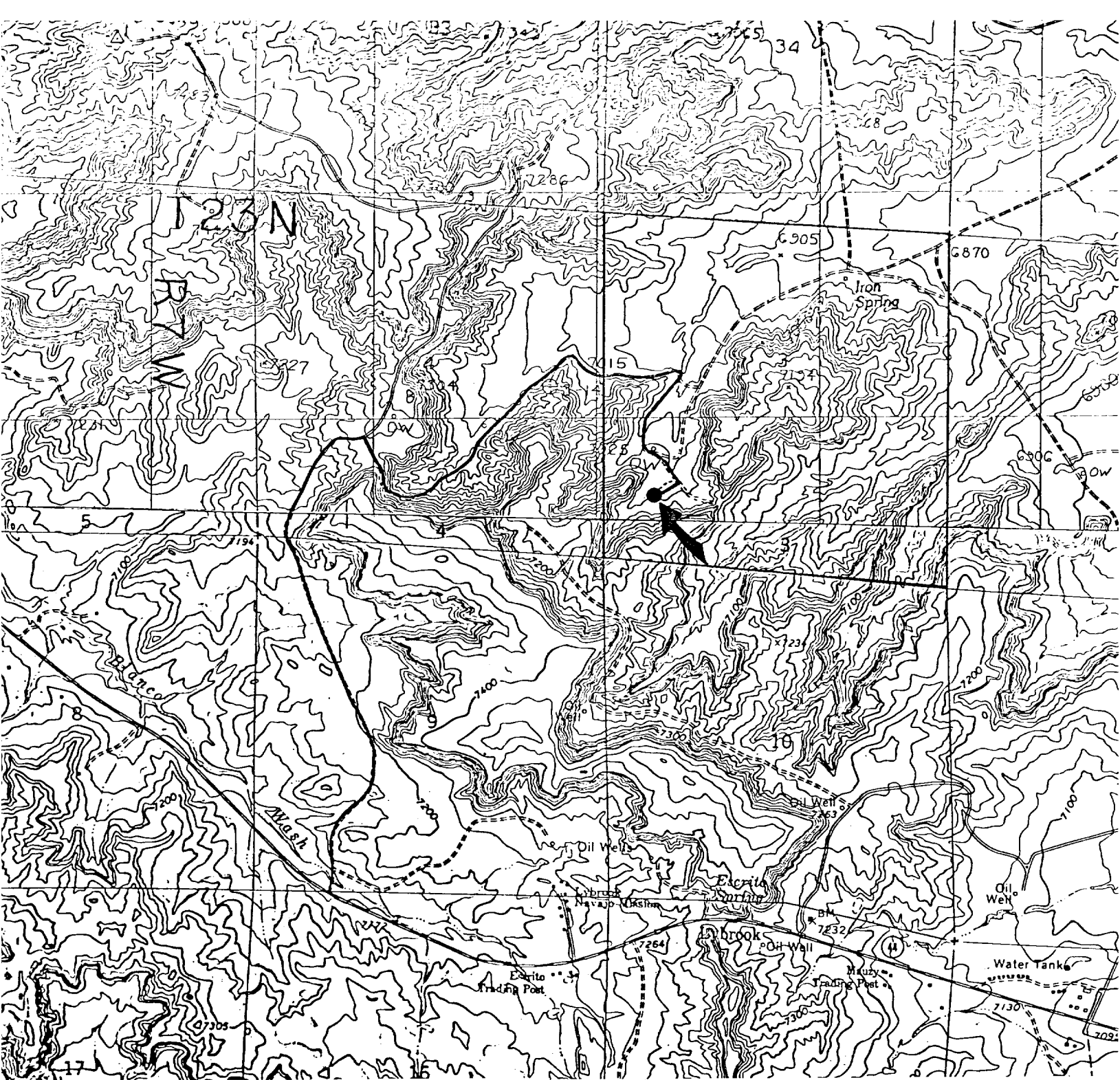


Date Surveyed
January 16, 1986

Registered Professional Engineer and/or Land Surveyor

Edgar L. Risenhoover
Certificate No. 5979
Edgar L. Risenhoover, L.S.

0 330 660 990 1320 1650 1980 2310 2640 2970 3300 3630 3960 4290 4620 4950 5280 5610 5940 6270 6600



FOUR CORNERS EXPLORATION CO. - Lybrook #3
Existing Roads Exhibit E

Distance from nearest town or reference pt.
approx. 7500' North of Escrito Trading Post

Type of surface dirt

Conditions good

Other USGS Crow Mesa East, NM

Reference Maps: Provisional Edition 1985

7.5' and USGS Lybrook, NM 7.5' 1966 series.

FOUR CORNERS EXPLORATION CO. - Lybrook #3
Planned Access Road(s) Exhibit E

Width 20' Maximum grades 2%

Drainage design as required

Cuts & Fills as required

Surfacing material

☒ Turnouts

☒ Culverts

☒ Gates

☒ Cattleguards

☒ Fence cuts

Access road(s) do/do not cross Fed/Ind land.