

UNITED STATES
DEPARTMENT OF THE INTERIOR
BUREAU OF LAND MANAGEMENT

APPLICATION FOR PERMIT TO DRILL, DEEPEN, OR PLUG BACK

1a. TYPE OF WORK

DRILL ☒

DEEPEN ☐

PLUG BACK ☐

b. TYPE OF WELL

OIL
WELL ☒

GAS
WELL ☐

OTHER

SINGLE
ZONE ☐

MULTIPLE
ZONE ☐

2. NAME OF OPERATOR

JACK A. COLE

3. ADDRESS OF OPERATOR

P. O. BOX 191, FARMINGTON, NEW MEXICO 87499

4. LOCATION OF WELL (Report location clearly and in accordance with any State requirements.)*

At surface

740' FNL, 730' FEL

At proposed prod. zone SAME

14. DISTANCE IN MILES AND DIRECTION FROM NEAREST TOWN OR POST OFFICE*

10. DISTANCE FROM PROPOSED*

LOCATION TO NEAREST
PROPERTY OR LEASE LINE, FT.
(Also to nearest drlg. unit line, if any)

16. NO. OF ACRES IN LEASE

2567.37

17. NO. OF ACRES ASSIGNED
TO THIS WELL

160-JOINED WITH MARCUS A#12

18. DISTANCE FROM PROPOSED LOCATION*

TO NEAREST WELL, DRILLING, COMPLETED,
OR APPLIED FOR, ON THIS LEASE, FT.

19. PROPOSED DEPTH

5735

20. ROTARY OR CABLE TOOLS

ROTARY

21. ELEVATIONS (Show whether DF, RT, GR, etc.)

6811 GR

22. APPROX. DATE WORK WILL START*

AS SOON AS POSSIBLE

23.

PROPOSED CASING AND CEMENTING PROGRAM

SIZE OF HOLE	SIZE OF CASING	WEIGHT PER FOOT	SETTING DEPTH	QUANTITY OF CEMENT
12 1/4	8 5/8	24.0 LB.	250	250 SKS.
7 7/8	4 1/2	10.50 LB.	5735	800 SKS.

ALL PRODUCING INTERVALS IN GALLUP FORMATION WILL BE STIMULATED AS NECESSARY.

EXHIBITS:

"A" LOCATION AND ELEVATION PLAT

"B" TEN POINT COMPLIANCE PROGRAM

"C" BLOWOUT PREVENTOR DIAGRAM

"D" MULTI-POINT REQUIREMENTS OF APD

"E" ACCESS ROAD TO LOCATION

"F" DRILL RIG LAYOUT

"G" FRACTURING PROGRAM LAYOUT

"H" LOCATION PROFILE

PROPOSED PIPELINE

IN ABOVE SPACE DESCRIBE PROPOSED PROGRAM: If proposal is to deepen or plug back, give data on present productive zone and proposed new productive zone. If proposal is to drill or deepen directionally, give pertinent data on subsurface locations and measured and true vertical depths. Give blowout preventer program, if any.

24.

SIGNED

Dwayne Blissett

TITLE

PRODUCTION SUPERINTENDENT

AUGUST 17, 1989

(This space for Federal or State office use)

PERMIT NO.

APPROVAL DATE

APPROVED
AS AMENDED

APPROVED BY

TITLE

CONDITIONS OF APPROVAL, IF ANY:

AUG 18 1989

AREA MANAGER

*See Instructions On Reverse Side

OIL CONSERVATION DIVISION

P. O. BOX 2088

STATE OF NEW MEXICO
ENERGY AND MINERALS DEPARTMENT

SANTA FE, NEW MEXICO 87501

Form C-102
Revised 10-1-78

All distances must be from the outer boundaries of the Section.

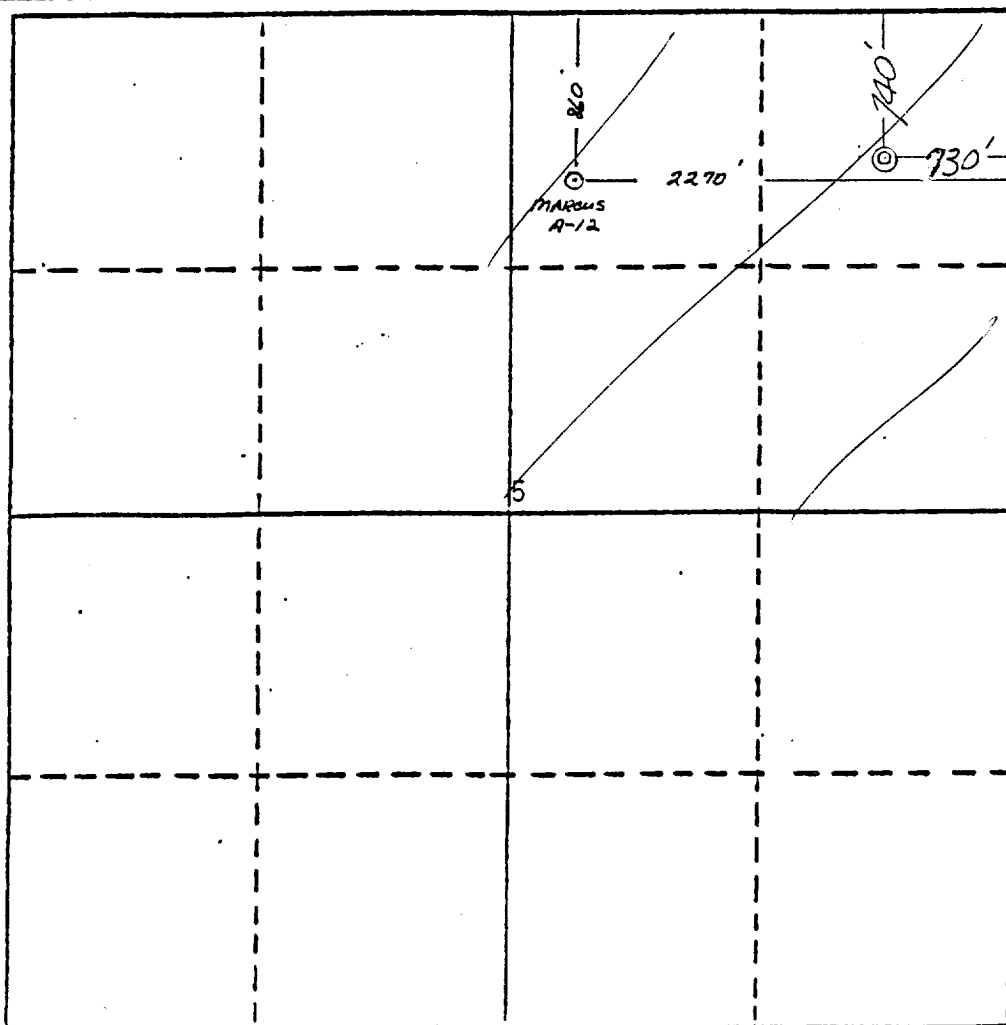
Operator JACK A. COLE		Lease RINCON		Well No. #5Y	
Unit Letter A	Section 5	Township 23 NORTH	Range 6 WEST	County RIO ARRIBA	
Actual Footage Location of Well: 740 feet from the NORTH line and 730 feet from the EAST line					
Ground Level Elev. 6811	Producing Formation GALLUP	Pool COUNSELORS GALLUP-DAKOTA	Dedicated Acreage 160-JOINED WITH ACTES		

1. Outline the acreage dedicated to the subject well by colored pencil or hatchure marks on the plat below. **MARCUS A12**
2. If more than one lease is dedicated to the well, outline each and identify the ownership thereof (both as to working interest and royalty).
3. If more than one lease of different ownership is dedicated to the well, have the interests of all owners been consolidated by communitization, unitization, force-pooling, etc?

☐ Yes ☐ No If answer is "yes," type of consolidation _____

If answer is "no," list the owners and tract descriptions which have actually been consolidated. (Use reverse side of this form if necessary.) _____

No allowable will be assigned to the well until all interests have been consolidated (by communitization, unitization, forced-pooling, or otherwise) or until a non-standard unit, eliminating such interests, has been approved by the Division.



CERTIFICATION

I hereby certify that the information contained herein is true and complete to the best of my knowledge and belief.

DeWayne Blacett
Name

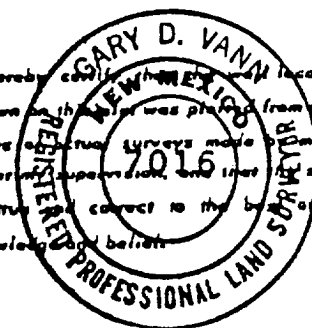
DEWAYNE BLANCETT

Position
PRODUCTION SUPERINTENDENT

Company **JACK A. COLE dba**
COLE PRODUCTION CO.

Date
AUGUST 17, 1989

I hereby certify that the location shown on this plat was plotted from field notes and actual surveys made by me or under my supervision, and that the same is true and correct to the best of my knowledge and belief.



Date Surveyed
November 10, 1988

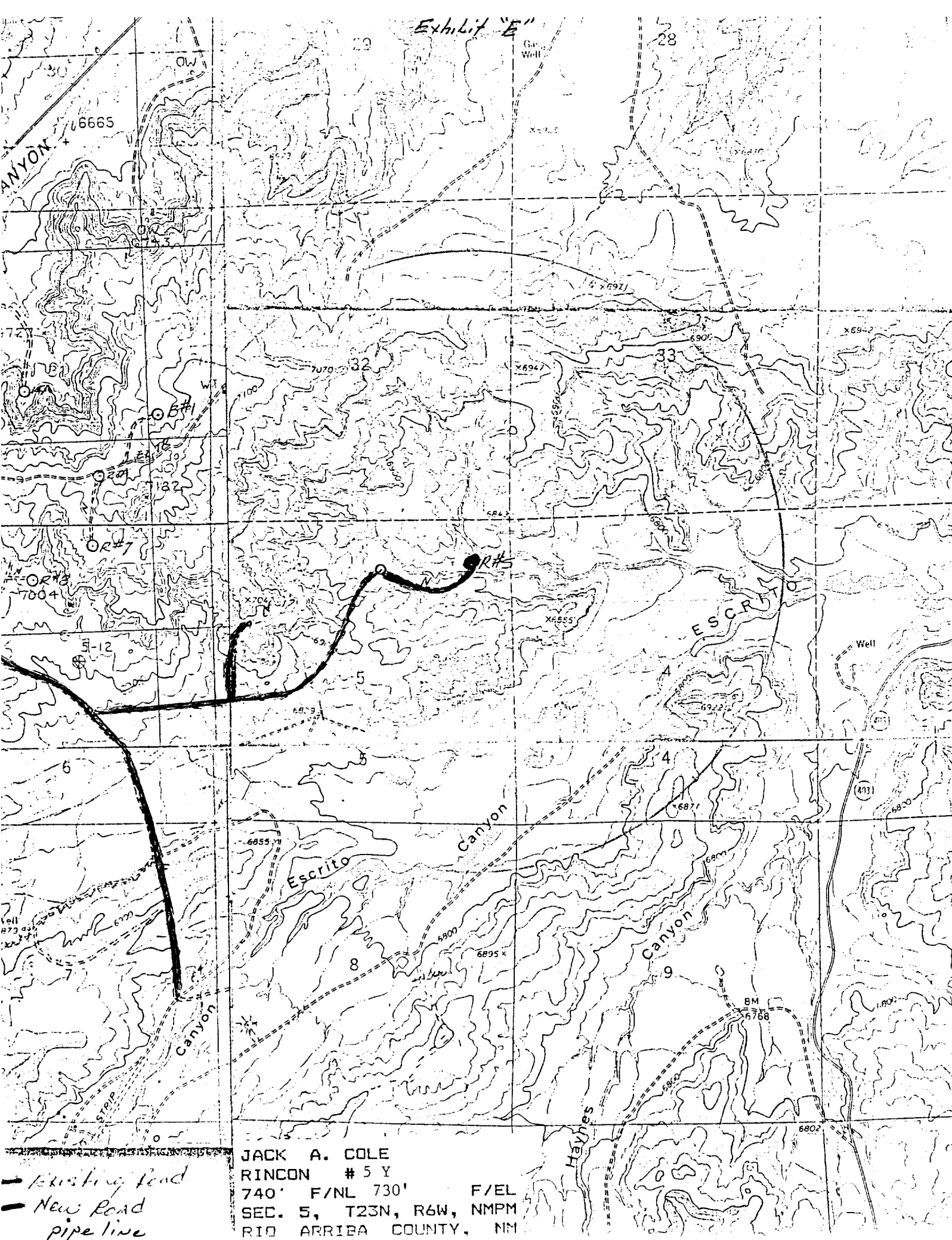
Registered Professional Engineer
and/or Land Surveyor

Gary D. Vann
Gary D. Vann

Certificate No.
7016

0 310 440 560 1120 1440 1880 2110 2440 2000 1500 1000 500 0

Exhibit "E"



--- Existing Road
— New Road
pipe line

JACK A. COLE
RINCON # 5 Y
740' F/NL 730' F/EL
SEC. 5, T23N, R6W, NMPM
RIO ARRIBA COUNTY, NM