

UNITED STATES
DEPARTMENT OF THE INTERIOR
GEOLOGICAL SURVEY

30-043-20183

5. LEASE DESIGNATION AND SERIAL NO.

NM 25819

6. IF INDIAN, ALLOTTEE OR TRIBE NAME

7. UNIT AGREEMENT NAME

8. FARM OR LEASE NAME

Federal 29

9. WELL NO.

#1

10. FIELD AND POOL, OR WILDCAT

Wildcat Estrada

11. SEC., T., R., M., OR BLK.
AND SURVEY OR AREA

Sec. 29, T21n, T7W

12. COUNTY OR PARISH

Sandoval

N.M.

13. STATE

Sandoval

14. NO. OF ACRES IN LEASE

320

15. NO. OF ACRES ASSIGNED
TO THIS WELL

40

16. PROPOSED DEPTH

6100'

17. ROTARY OR CABLE TOOLS

Rotary

21. APPROX. DATE WORK WILL START*

August 22, 1975

22. APPROX. DATE WORK WILL START*

August 22, 1975

23. APPROX. DATE WORK WILL START*

August 22, 1975

24. APPROX. DATE WORK WILL START*

August 22, 1975

25. APPROX. DATE WORK WILL START*

August 22, 1975

26. APPROX. DATE WORK WILL START*

August 22, 1975

27. APPROX. DATE WORK WILL START*

August 22, 1975

28. APPROX. DATE WORK WILL START*

August 22, 1975

29. APPROX. DATE WORK WILL START*

August 22, 1975

30. APPROX. DATE WORK WILL START*

August 22, 1975

31. APPROX. DATE WORK WILL START*

August 22, 1975

32. APPROX. DATE WORK WILL START*

August 22, 1975

33. APPROX. DATE WORK WILL START*

August 22, 1975

34. APPROX. DATE WORK WILL START*

August 22, 1975

35. APPROX. DATE WORK WILL START*

August 22, 1975

36. APPROX. DATE WORK WILL START*

August 22, 1975

37. APPROX. DATE WORK WILL START*

August 22, 1975

38. APPROX. DATE WORK WILL START*

August 22, 1975

39. APPROX. DATE WORK WILL START*

August 22, 1975

40. APPROX. DATE WORK WILL START*

August 22, 1975

41. APPROX. DATE WORK WILL START*

August 22, 1975

42. APPROX. DATE WORK WILL START*

August 22, 1975

43. APPROX. DATE WORK WILL START*

August 22, 1975

44. APPROX. DATE WORK WILL START*

August 22, 1975

45. APPROX. DATE WORK WILL START*

August 22, 1975

46. APPROX. DATE WORK WILL START*

August 22, 1975

47. APPROX. DATE WORK WILL START*

August 22, 1975

48. APPROX. DATE WORK WILL START*

August 22, 1975

49. APPROX. DATE WORK WILL START*

August 22, 1975

50. APPROX. DATE WORK WILL START*

August 22, 1975

51. APPROX. DATE WORK WILL START*

August 22, 1975

52. APPROX. DATE WORK WILL START*

August 22, 1975

53. APPROX. DATE WORK WILL START*

August 22, 1975

54. APPROX. DATE WORK WILL START*

August 22, 1975

55. APPROX. DATE WORK WILL START*

August 22, 1975

56. APPROX. DATE WORK WILL START*

August 22, 1975

57. APPROX. DATE WORK WILL START*

August 22, 1975

58. APPROX. DATE WORK WILL START*

August 22, 1975

59. APPROX. DATE WORK WILL START*

August 22, 1975

60. APPROX. DATE WORK WILL START*

August 22, 1975

61. APPROX. DATE WORK WILL START*

August 22, 1975

62. APPROX. DATE WORK WILL START*

August 22, 1975

63. APPROX. DATE WORK WILL START*

August 22, 1975

64. APPROX. DATE WORK WILL START*

August 22, 1975

65. APPROX. DATE WORK WILL START*

August 22, 1975

66. APPROX. DATE WORK WILL START*

August 22, 1975

67. APPROX. DATE WORK WILL START*

August 22, 1975

68. APPROX. DATE WORK WILL START*

August 22, 1975

69. APPROX. DATE WORK WILL START*

August 22, 1975

70. APPROX. DATE WORK WILL START*

August 22, 1975

71. APPROX. DATE WORK WILL START*

August 22, 1975

72. APPROX. DATE WORK WILL START*

August 22, 1975

73. APPROX. DATE WORK WILL START*

August 22, 1975

74. APPROX. DATE WORK WILL START*

August 22, 1975

75. APPROX. DATE WORK WILL START*

August 22, 1975

76. APPROX. DATE WORK WILL START*

August 22, 1975

77. APPROX. DATE WORK WILL START*

August 22, 1975

78. APPROX. DATE WORK WILL START*

August 22, 1975

79. APPROX. DATE WORK WILL START*

August 22, 1975

80. APPROX. DATE WORK WILL START*

August 22, 1975

81. APPROX. DATE WORK WILL START*

August 22, 1975

82. APPROX. DATE WORK WILL START*

August 22, 1975

83. APPROX. DATE WORK WILL START*

August 22, 1975

84. APPROX. DATE WORK WILL START*

August 22, 1975

85. APPROX. DATE WORK WILL START*

August 22, 1975

86. APPROX. DATE WORK WILL START*

August 22, 1975

87. APPROX. DATE WORK WILL START*

August 22, 1975

88. APPROX. DATE WORK WILL START*

August 22, 1975

89. APPROX. DATE WORK WILL START*

August 22, 1975

90. APPROX. DATE WORK WILL START*

August 22, 1975

91. APPROX. DATE WORK WILL START*

August 22, 1975

92. APPROX. DATE WORK WILL START*

August 22, 1975

93. APPROX. DATE WORK WILL START*

August 22, 1975

94. APPROX. DATE WORK WILL START*

August 22, 1975

95. APPROX. DATE WORK WILL START*

August 22, 1975

96. APPROX. DATE WORK WILL START*

August 22, 1975

97. APPROX. DATE WORK WILL START*

August 22, 1975

98. APPROX. DATE WORK WILL START*

August 22, 1975

99. APPROX. DATE WORK WILL START*

August 22, 1975

100. APPROX. DATE WORK WILL START*

August 22, 1975

101. APPROX. DATE WORK WILL START*

August 22, 1975

102. APPROX. DATE WORK WILL START*

August 22, 1975

103. APPROX. DATE WORK WILL START*

August 22, 1975

104. APPROX. DATE WORK WILL START*

August 22, 1975

105. APPROX. DATE WORK WILL START*

August 22, 1975

106. APPROX. DATE WORK WILL START*

August 22, 1975

107. APPROX. DATE WORK WILL START*

August 22, 1975

108. APPROX. DATE WORK WILL START*

August 22, 1975

109. APPROX. DATE WORK WILL START*

August 22, 1975

110. APPROX. DATE WORK WILL START*

August 22, 1975

111. APPROX. DATE WORK WILL START*

August 22, 1975

112. APPROX. DATE WORK WILL START*

August 22, 1975

113. APPROX. DATE WORK WILL START*

August 22, 1975

114. APPROX. DATE WORK WILL START*

August 22, 1975

115. APPROX. DATE WORK WILL START*

August 22, 1975

116. APPROX. DATE WORK WILL START*

August 22, 1975

117. APPROX. DATE WORK WILL START*

August 22, 1975

118. APPROX. DATE WORK WILL START*

August 22, 1975

119. APPROX. DATE WORK WILL START*

August 22, 1975

120. APPROX. DATE WORK WILL START*

August 22, 1975

121. APPROX. DATE WORK WILL START*

August 22, 1975

122. APPROX. DATE WORK WILL START*

August 22, 1975

123. APPROX. DATE WORK WILL START*

August 22, 1975

124. APPROX. DATE WORK WILL START*

August 22, 1975

125. APPROX. DATE WORK WILL START*

August 22, 1975

126. APPROX. DATE WORK WILL START*

August 22, 1975

127. APPROX. DATE WORK WILL START*

August 22, 1975

128. APPROX. DATE WORK WILL START*

August 22, 1975

129. APPROX. DATE WORK WILL START*

August 22, 1975

130. APPROX. DATE WORK WILL START*

August 22, 1975

131. APPROX. DATE WORK WILL START*

August 22, 1975

132. APPROX. DATE WORK WILL START*

August 22, 1975

133. APPROX. DATE WORK WILL START*

August 22, 1975

134. APPROX. DATE WORK WILL START*

August 22, 1975

135. APPROX. DATE WORK WILL START*

August 22, 1975

136. APPROX. DATE WORK WILL START*

August 22, 1975

137. APPROX. DATE WORK WILL START*

August 22, 1975

138. APPROX. DATE WORK WILL START*

August 22, 1975

139. APPROX. DATE WORK WILL START*

August 22, 1975

140. APPROX. DATE WORK WILL START*

August 22, 1975

141. APPROX. DATE WORK WILL START*

August 22, 1975

142. APPROX. DATE WORK WILL START*

August 22, 1975

143. APPROX. DATE WORK WILL START*

August 22, 1975

144. APPROX. DATE WORK WILL START*

August 22, 1975

145. APPROX. DATE WORK WILL START*

August 22, 1975

146. APPROX. DATE WORK WILL START*

August 22, 1975

147. APPROX. DATE WORK WILL START*

August 22, 1975

148. APPROX. DATE WORK WILL START*

August 22, 1975

149. APPROX. DATE WORK WILL START*

August 22, 1975

150. APPROX. DATE WORK WILL START*

August 22, 1975

151. APPROX. DATE WORK WILL START*

August 22, 1975

152. APPROX. DATE WORK WILL START*

August 22, 1975

153. APPROX. DATE WORK WILL START*

August 22, 1975

154. APPROX. DATE WORK WILL START*

August 22, 1975

155. APPROX. DATE WORK WILL START*

August 22, 1975

156. APPROX. DATE WORK WILL START*

August 22, 1975

157. APPROX. DATE WORK WILL START*

August 22, 1975

158. APPROX. DATE WORK WILL START*

August 22, 1975

159. APPROX. DATE WORK WILL START*

August 22, 1975

160. APPROX. DATE WORK WILL START*

August 22, 1975

161. APPROX. DATE WORK WILL START*

August 22, 1975

NEW MEXICO OIL CONSERVATION COMMISSION
WELL LOCATION AND ACREAGE DEDICATION PLAT

Form C-102
Supersedes C-128
Effective 1-1-65

All distances must be from the outer boundaries of the Section.

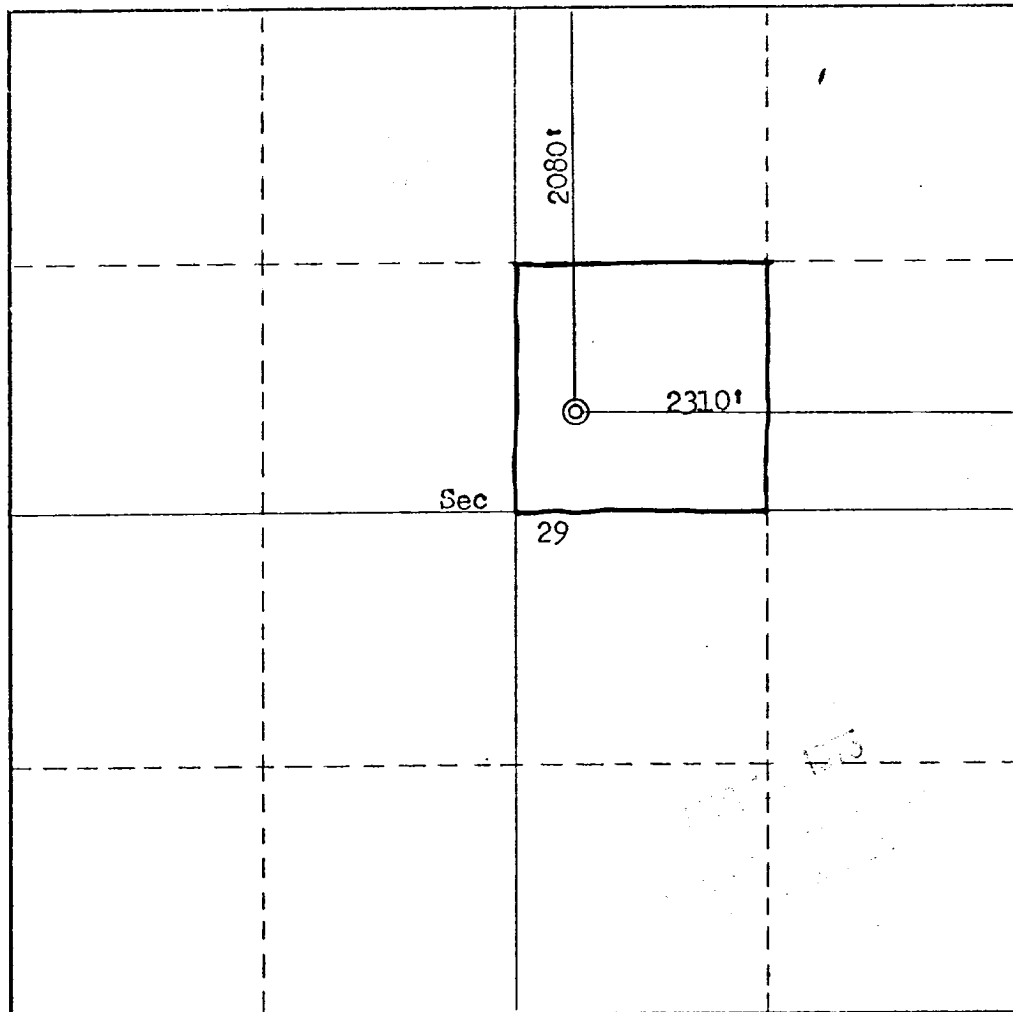
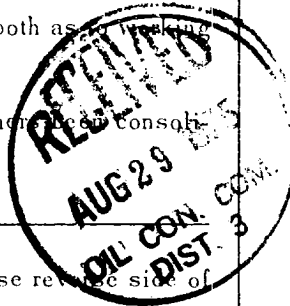
Operator Filon Exploration		Lease Filon-Federal 29		Well No. 1
Unit Letter G	Section 29	Township 21N	Range 7W	County Sandoval
Actual Footage Location of Well: 2080 feet from the North line and 2310 feet from the East line				
Ground Level Elev. 6819	Producing Formation Entrada	Pool Wildcat	Dedicated Acreage: 40 Acres	

1. Outline the acreage dedicated to the subject well by colored pencil or hachure marks on the plat below.
2. If more than one lease is dedicated to the well, outline each and identify the ownership thereof (both as to ownership interest and royalty).
3. If more than one lease of different ownership is dedicated to the well, have the interests of all owners been consolidated by communitization, unitization, force-pooling, etc?

☐ Yes ☐ No If answer is "yes," type of consolidation _____

If answer is "no," list the owners and tract descriptions which have actually been consolidated. (Use reverse side of this form if necessary.) _____

No allowable will be assigned to the well until all interests have been consolidated (by communitization, unitization, forced-pooling, or otherwise) or until a non-standard unit, eliminating such interests, has been approved by the Commission.



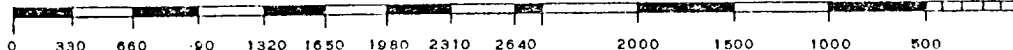
CERTIFICATION

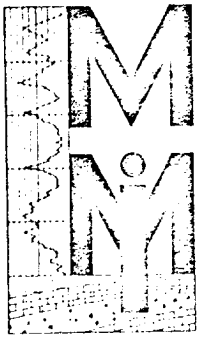
I hereby certify that the information contained herein is true and complete to the best of my knowledge and belief.

Name
J. Arnold Hall
Position
Area Manager
Company
Minerals Management Inc.
Date
August 15, 1975

I hereby certify that the well location shown on this plat was plotted from field notes of actual surveys made by me or under my supervision, and that the same is true and correct to the best of my knowledge and belief.

Date Surveyed
August 13, 1975
Registered Professional Engineer and/or Land Surveyor
Fred B. Korr Jr.
Certificate No.
3950





MINERALS
MANAGEMENT INC.

TELEPHONE (505) 327 4441
501 AIRPORT DRIVE—PETROLEUM CENTER BUILDING
SUITE 210
FARMINGTON, NEW MEXICO 87401

DEVELOPMENT PLAN FOR SURFACE USE

FILON EXPLORATION CORPORATION

FEDERAL 29 WELL NO. 1

2080 FNL, 2310 FEL, SEC. 29 T21N, R7W

SANDOVAL COUNTY, NEW MEXICO

1. Existing Roads

The main road in the immediate area is the road from 44 Store Trading Post to Pueblo Pintada School.

2. Planned Access Road

The location falls adjacent to the main road above and approximately 200' of new road will be required.

3. Location of Existing Wells

None

4. Lateral Roads

As per topographic map.

5. Location of Tank Batteries and Flowlines

Will be initially located on the drill pad approximately 150 feet from the well if production is encountered.

6. Water Supply

Water will be hauled to the well site from nearby water holes in the area.

APR 16 1975

7. Method of Handling Waste Disposal

Waste will be buried in the reserve pit on completion of the well. The reserve pit will be backfilled. Toilet facilities will be provided.

8. Location of Camp

No camp will be used.

9. Location of Airstrip

None

10. Diagram of Well Location

See attached diagram

11. Plans for Restoration of Surface

The surface will be restored and reseeded as directed by the Bureau of Land Management.

12. Impact on the Environment

Impact on the environment will be minimal. The access road and well location is sparsely vegetated and minimum trees and sage will be disturbed.

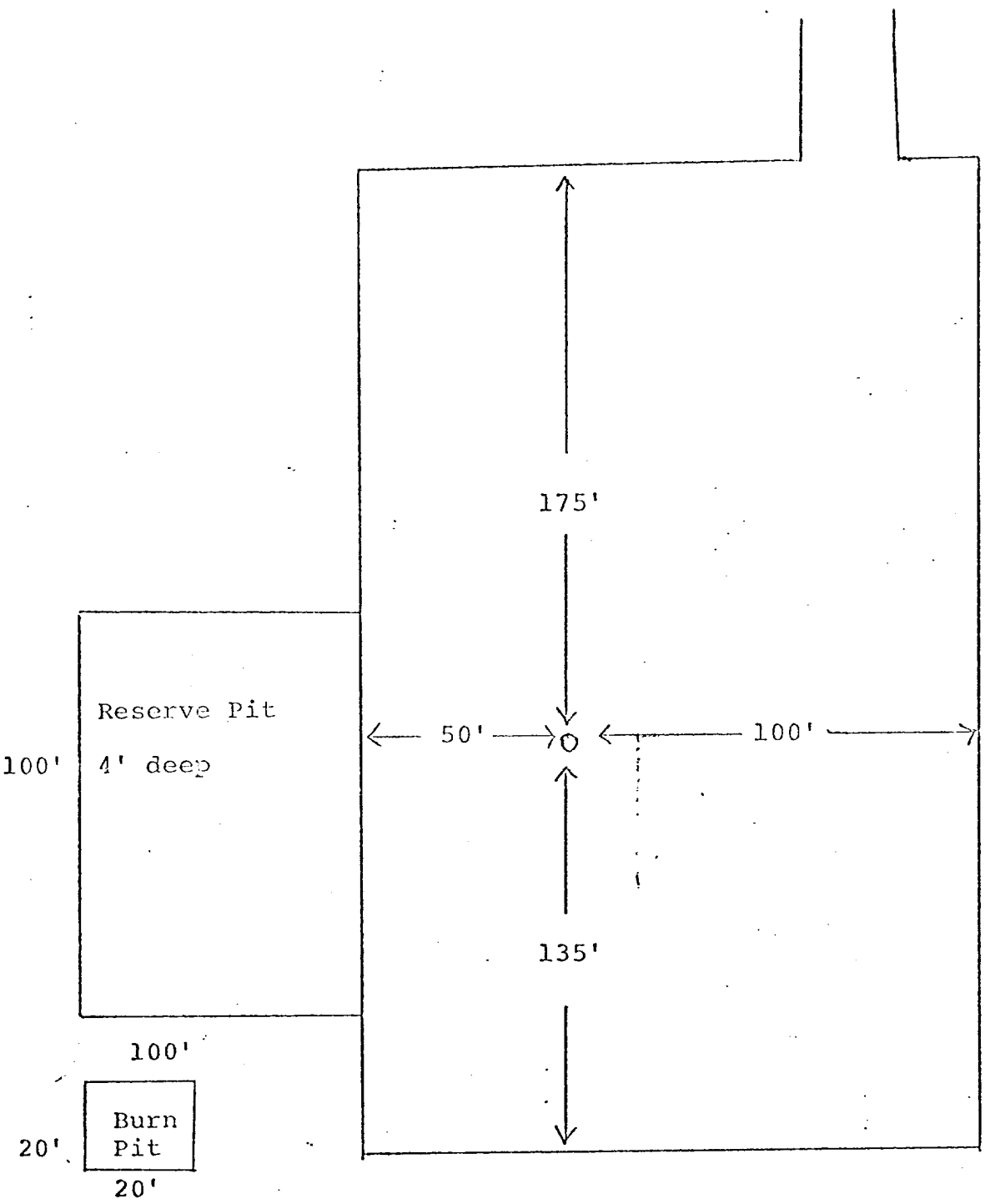


DIAGRAM OF WELL LOCATION

1916 10 1875

