

UNITED STATES
DEPARTMENT OF THE INTERIOR
GEOLOGICAL SURVEY

APPLICATION FOR PERMIT TO DRILL, DEEPEN, OR PLUG BACK

1a. TYPE OF WORK DRILL ☒ DEEPEN ☐ PLUG BACK ☐

b. TYPE OF WELL

OIL
WELL ☐GAS
WELL ☒OTHER ☐SINGLE
ZONE ☒MULTIPLE
ZONE ☐

2. NAME OF OPERATOR

J. Gregory Merrion & Robert L. Bayless

3. ADDRESS OF OPERATOR

P.O. Box 1541, Farmington, NM 87401

4. LOCATION OF WELL (Report location clearly and in accordance with any State requirements.)*

At surface

790' FSL * 1850' FEL

At proposed prod. zone

same

14. DISTANCE IN MILES AND DIRECTION FROM NEAREST TOWN OR POST OFFICE*

15. DISTANCE FROM PROPOSED*

LOCATION TO NEAREST

PROPERTY OR LEASE LINE, FT.

(Also to nearest drig. unit line, if any)

18. DISTANCE FROM PROPOSED LOCATION*
TO NEAREST WELL, DRILLING, COMPLETED,
OR APPLIED FOR, ON THIS LEASE, FT.

16. NO. OF ACRES IN LEASE

+ 2560^{2401.58}

19. PROPOSED DEPTH

2500'

17. NO. OF ACRES ASSIGNED
TO THIS WELL

160

20. ROTARY OR CABLE TOOLS

Rotary

21. ELEVATIONS (Show whether DF, RT, GR, etc.)

6946' GL

22. APPROX. DATE WORK WILL START*

As soon as possible

23.

PROPOSED CASING AND CEMENTING PROGRAM

SIZE OF HOLE	SIZE OF CASING	WEIGHT PER FOOT	SETTING DEPTH	QUANTITY OF CEMENT
9"	7"	23#	90'	30 sacks circulated to surface
5-1/8"	2-7/8"	6.5#	2500'	125 sacks

Will drill 9" hole to 90' and set 90' of 7", 23#, J-55 used casing with 30 sacks Class H cement, circulated to surface. Will drill 5-1/8" hole to 2500' and run 2500' of 2-7/8", EUE, J-55 used casing and cement with 125 sacks Class H cement with 2% D-79 circulated to above Ojo Alamo. Circulating medium will be clear water, natural mud and water-loss control additives. No abnormal pressures or temperatures are anticipated. Will run Induction and Density logs. Blowout preventer schematic is attached. The gas from this formation is dedicated to a gas contract.

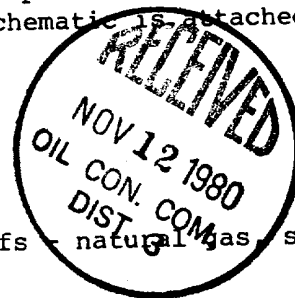
ESTIMATED TOPS

Surface Formation: Clays & sand

1720': Ojo Alamo

2150': Fruitland

2350': Pictured Cliffs - natural gas, salt water



IN ABOVE SPACE DESCRIBE PROPOSED PROGRAM: If proposal is to deepen or plug back, give data on present productive zone and proposed new productive zone. If proposal is to drill or deepen directionally, give pertinent data on subsurface locations and measured and true vertical depths. Give blowout preventer program, if any.

24.

SIGNED

(This space for Federal or State office use)

TITLE

Operator

DATE

Oct. 3, 1980

PERMIT NO.

APPROVAL DATE

APPROVED BY

CONDITIONS OF APPROVAL, IF ANY:

TITLE

DATE

*See Instructions On Reverse Side

OIL CONSERVATION DIVISION

P. O. BOX 2088

SANTA FE, NEW MEXICO 87501

Form C-107
Revised 10-1-78

STATE OF NEW MEXICO

ENERGY AND MINERALS DEPARTMENT

All distances must be from the outer boundaries of the Section.

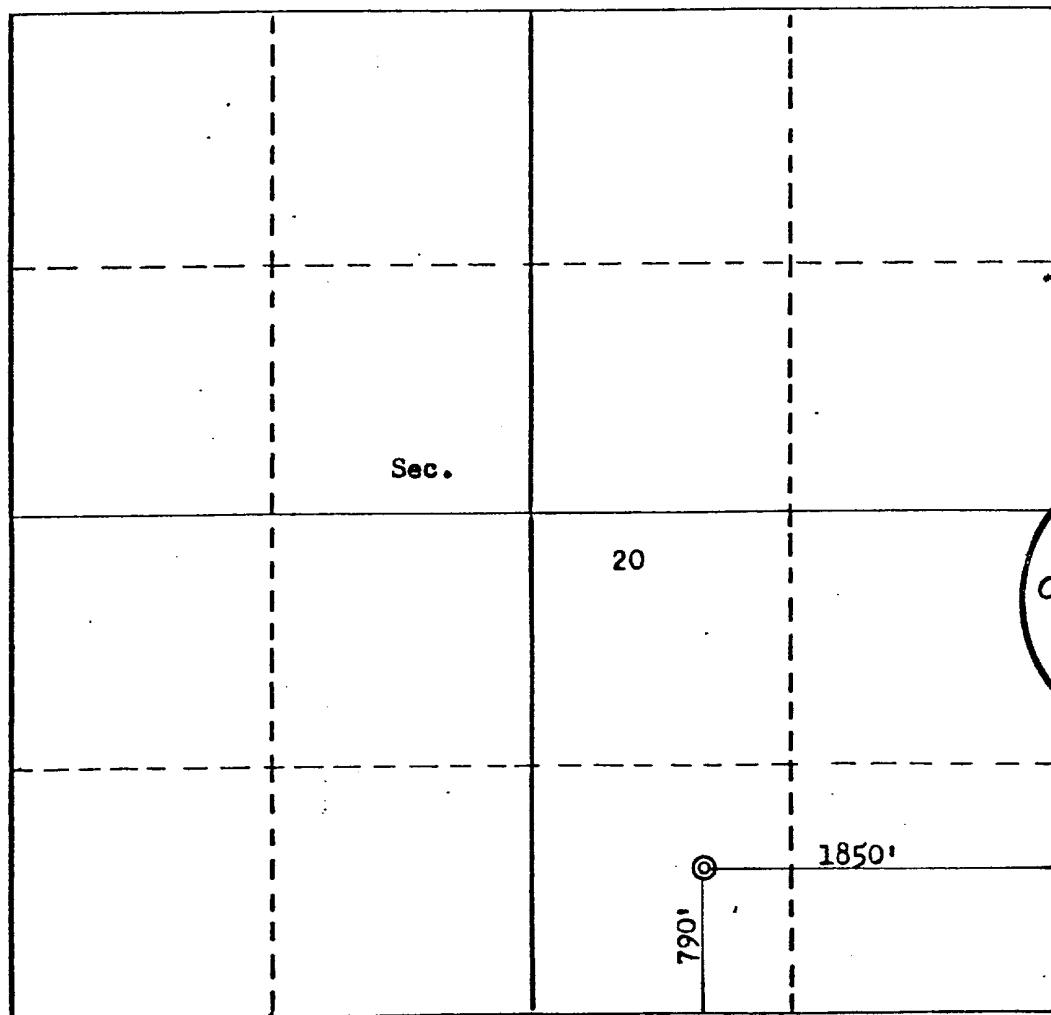
Operator MERRION & BAYLESS			Lease PONCA		Well No. 1
Unit Letter 0	Section 20	Township 23N	Range 4W	County Sandoval	
Actual Footage Location of Well:					
790 feet from the South line and		1850 feet from the East line			
Ground Level Elev. 6946	Producing Formation Pictured Cliffs	Pool Ballard	Dedicated Acreage: 160 Acres		

1. Outline the acreage dedicated to the subject well by colored pencil or hatchure marks on the plat below.
2. If more than one lease is dedicated to the well, outline each and identify the ownership thereof (both as to working interest and royalty).
3. If more than one lease of different ownership is dedicated to the well, have the interests of all owners been consolidated by communitization, unitization, force-pooling, etc?

☐ Yes ☐ No If answer is "yes," type of consolidation _____

If answer is "no," list the owners and tract descriptions which have actually been consolidated. (Use reverse side of this form if necessary.) _____

No allowable will be assigned to the well until all interests have been consolidated (by communitization, unitization, forced-pooling, or otherwise) or until a non-standard unit, eliminating such interests, has been approved by the Commission.



CERTIFICATION

I hereby certify that the information contained herein is true and complete to the best of my knowledge and belief.

Robert L. Bayless
Name

Robert L. Bayless

Position
Co-Venturer

Company
Merrion & Bayless

Date
September 29, 1980

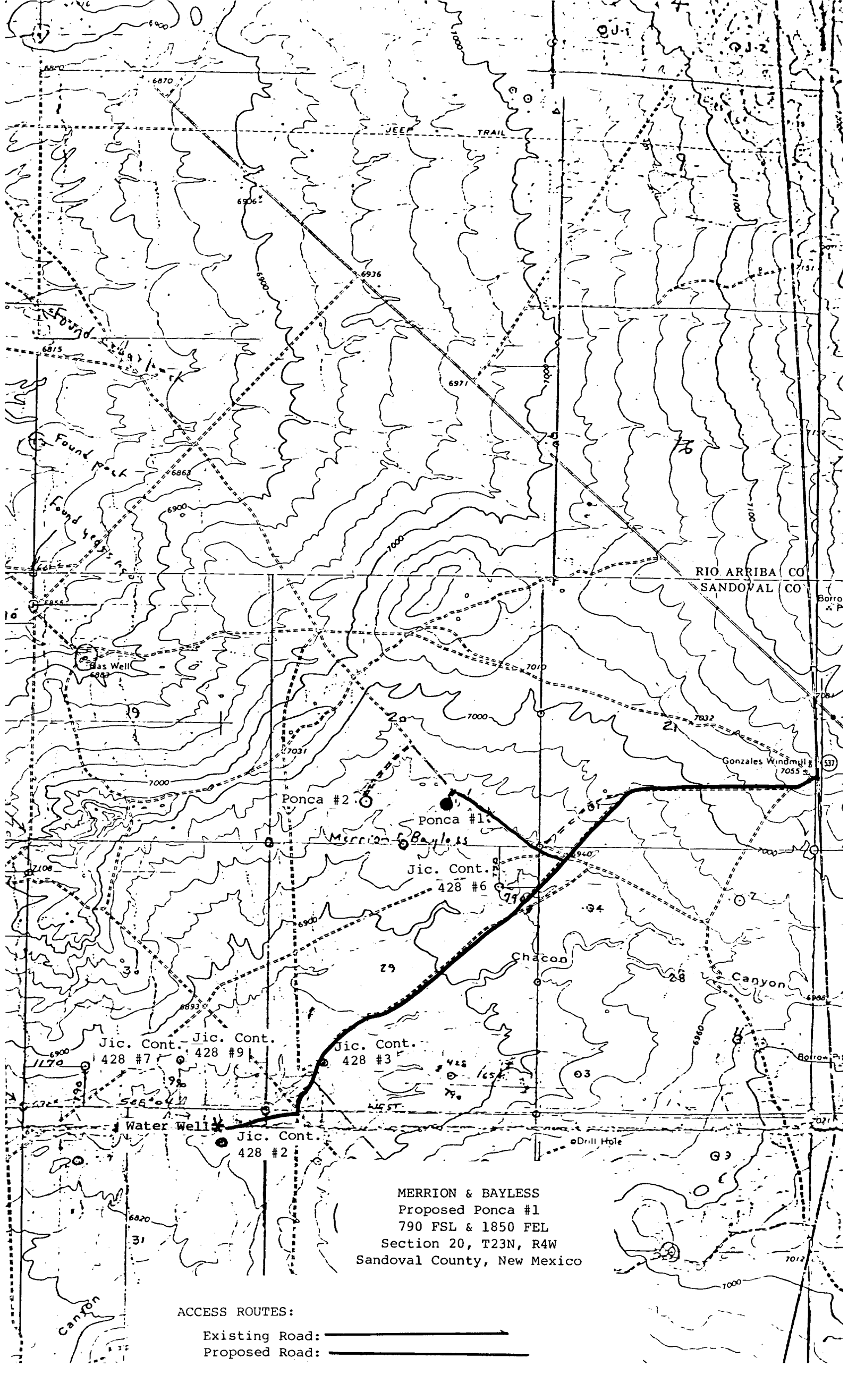
Robert L. Bayless
I hereby certify that the well location shown on this plat was plotted from field notes of actual surveys made by me or under my supervision, and that the same is true and correct to the best of my knowledge and belief.

Date Surveyed
September 4, 1980

Registered Professional Engineer and/or Land Surveyor


Fred B. Kene Jr.
Fred B. Kene Jr.

Certificate No. 3950



MERRION & BAYLESS
Proposed Ponca #1
790 FSL & 1850 FEL
Section 20, T23N, R4W
Sandoval County, New Mexico

ACCESS ROUTES:

Existing Road: 
Proposed Road: 