

UNITED STATES
DEPARTMENT OF THE INTERIOR
GEOLOGICAL SURVEY

APPLICATION FOR PERMIT TO DRILL, DEEPEN, OR PLUG BACK

1a. TYPE OF WORK

DRILL ☒DEEPEN ☐PLUG BACK ☐

b. TYPE OF WELL

OIL
WELL ☒GAS
WELL ☐

OTHER

SINGLE
ZONE ☐MULTIPLE
ZONE ☐

2. NAME OF OPERATOR

Hanson Oil Corporation

3. ADDRESS OF OPERATOR

P.O. Box 1515 - Roswell, New Mexico 88201

4. LOCATION OF WELL (Report location clearly and in accordance with any State requirements.)*

At surface

2310' FEL & 330' FNL

At proposed prod. zone

Sec. 25, T.17N, R.3W NMPM

14. DISTANCE IN MILES AND DIRECTION FROM NEAREST TOWN OR POST OFFICE*

29 Miles Southwest of Cuba, NM

15. DISTANCE FROM PROPOSED*

LOCATION TO NEAREST
PROPERTY OR LEASE LINE, FT.
(Also to nearest drlg. unit line, if any)

330'

18. DISTANCE FROM PROPOSED LOCATION*
TO NEAREST WELL, DRILLING, COMPLETED,
OR APPLIED FOR, ON THIS LEASE, FT.

N/A

16. NO. OF ACRES IN LEASE

720

19. PROPOSED DEPTH

3450'

17. NO. OF ACRES ASSIGNED
TO THIS WELL

40

20. ROTARY OR CABLE TOOLS

Rotary & Cable Tools

21. ELEVATIONS (Show whether DF, RT, GR, etc.)

6362' G.L.

DRILLING OPERATIONS AUTHORIZED ARE

SUBJECT TO COMPLIANCE WITH ATTACHED

"GENERAL REQUIREMENTS"

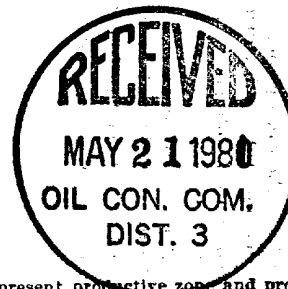
22. APPROX. DATE WORK WILL START*

May 25, 1981

23. This action is subject to administrative appeal pursuant to 30 CFR 290.

SIZE OF HOLE	SIZE OF CASING	WEIGHT PER FOOT	SETTING DEPTH	
18"	16" Conductor	---	20'	20 sx
12 1/4"	8 3/8"	24	300'	350 sx circ surf
7 7/8"	5 1/2"	15.5	3400'	100 sx

It is proposed to drill this well to depth of 3400' and set 5 1/2" csg in the Todilto anhydrite. The well will be drilled out from under 5 1/2" csg with cable tools to test the Todilto limestone. If production is encountered, tubing will be run for completion in open hole.



IN ABOVE SPACE DESCRIBE PROPOSED PROGRAM: If proposal is to deepen or plug back, give data on present productive zone and proposed new productive zone. If proposal is to drill or deepen directionally, give pertinent data on subsurface locations and measured and true vertical depths. Give blowout preventer program, if any.

24.

SIGNED

Ray Wells

TITLE

Vice President,
Land & Finance

DATE

4-20-81

(This space for Federal or State office use)

PERMIT NO.

APPROVAL DATE

APPROVED BY

TITLE

CONDITIONS OF APPROVAL, IF ANY:

APPROVED
AS AMENDED

DATE

MAY 19 1981

Dean Elliott
For JAMES F. SIMS
DISTRICT ENGINEER

WMOCC

OIL CONSERVATION DIVISION

P. O. BOX 2088

SANTA FE, NEW MEXICO 87501

Form C-107
Revised 10-1-78

STATE OF NEW MEXICO

ENERGY AND MINERALS DEPARTMENT

All distances must be from the outer boundaries of the Section.

Operator HANSON OIL CORPORATION			Lease CANDY BUTTE		Well No. 5
Unit Letter B	Section 25	Township 17N	Range 3W	County Sandoval	
Actual Footage Location of Well: 330 feet from the North line and 2310 feet from the East line					
Ground Level Elev: 6362	Producing Formation Wildcat		Pool Wildcat		Dedicated Acreage: 40 Acres

1. Outline the acreage dedicated to the subject well by colored pencil or hachure marks on the plat below.
2. If more than one lease is dedicated to the well, outline each and identify the ownership thereof (both as to working interest and royalty).
3. If more than one lease of different ownership is dedicated to the well, have the interests of all owners been consolidated by communitization, unitization, force-pooling, etc?

☐ Yes ☐ No If answer is "yes," type of consolidation N/A

If answer is "no," list the owners and tract descriptions which have actually been consolidated. (Use reverse side of this form if necessary.)

No allowable will be assigned to the well until all interests have been consolidated (by communitization, unitization, forced-pooling, or otherwise) or until a non-standard unit, eliminating such interests, has been approved by the Commission.

		330'	2310'
Sec.			
		25	

Scale: 1"=1000'

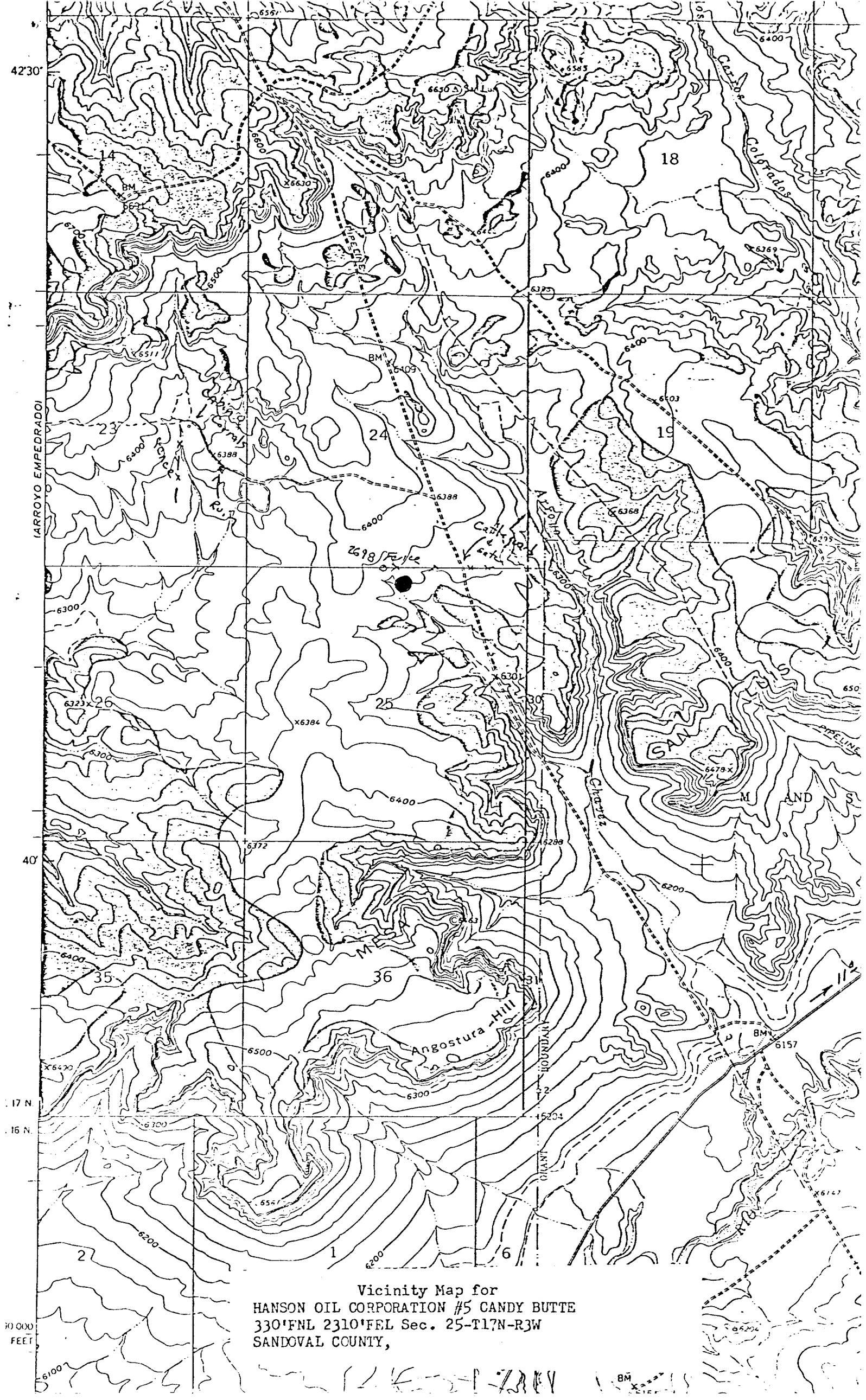
CERTIFICATION

I hereby certify that the information contained herein is true and complete to the best of my knowledge and belief.

Name Ray Wilk
 Position Vice-President,
General & Finance
Hanson Oil Corporation
 Date April 20, 1981

I hereby certify that the well location shown on this plat was plotted from field notes of actual surveys made by me or under my supervision, and that the same is true and correct to the best of my knowledge and belief.

Date Surveyed March 22, 1981
 Registered Professional Engineer
 and Land Surveyor
Fred B. Kerkor Jr.
 Certificate No. 3950



Vicinity Map for
HANSON OIL CORPORATION #5 CANDY BUTTE
330'FNL 2310'FEL Sec. 25-T17N-R3W
SANDOVAL COUNTY,