

UNITED STATES
DEPARTMENT OF THE INTERIOR
GEOLOGICAL SURVEY

APPLICATION FOR PERMIT TO DRILL, DEEPEN, OR PLUG BACK

1a. TYPE OF WORK

DRILL ☒DEEPEN ☐PLUG BACK ☐

b. TYPE OF WELL

OIL
WELL ☒GAS
WELL ☐OTHER ☐SINGLE
ZONE ☐MULTIPLE
ZONE ☐

2. NAME OF OPERATOR

Chace Oil Company, Inc.

3. ADDRESS OF OPERATOR

313 Washington, S. E., Albuquerque, NM 87108

4. LOCATION OF WELL (Report location clearly and in accordance with any State requirements)

At surface

Unit "I" 1850' FSL and 1000' FEL

At proposed prod. zone

14. DISTANCE IN MILES AND DIRECTION FROM NEAREST TOWN OR POST OFFICE*

13 miles S-SW of Lindrith, New Mexico

15. DISTANCE FROM PROPOSED*

LOCATION TO NEAREST

PROPERTY OR LEASE LINE, FT.

(Also to nearest drlg. unit line, if any)

1850'

18. DISTANCE FROM PROPOSED LOCATION*

TO NEAREST WELL, DRILLING, COMPLETED,
OR APPLIED FOR, ON THIS LEASE, FT.

3400'

21. ELEVATIONS (Show whether DF, RT, GR, etc.)

7180' KB 7167' GL

23.

PROPOSED CASING AND CEMENTING PROGRAM

SIZE OF HOLE	SIZE OF CASING	WEIGHT PER FOOT	SETTING DEPTH	QUANTITY OF CEMENT
9 3/4"	8 5/8"	22	225'	225 sxs Class "B" cement
7 7/8"	4 1/2"	11.6	7070'	1st stage - 750 sxs 50/50 posmix; 2nd stage - 550 sxs 40/60 posmix; 12% gel; 200 sxs Class "B" cement.

Drill 230' of 9 3/4" surface hole. Set 225' of 8 5/8" casing; cement to surface with 225 sxs cement. Use an oil base mud (15% oil) and Schaeffer 5000# standard doublegate hydraulic BOP. Drill 7 7/8" hole to 7070' to test the Dakota formation.

Wasatch formation on surface. Estimated tops: Ojo-2190'; Pictured Cliffs - 2500'; Chacra-2865'; Cliff House-4035'; Point Lookout-4410'; Gallup-5680'; Greenhorn-6670'; Dakota "A"-6745'; Dakota "D"-6920'.

D. V. Tool at 3000'. Float collar at 7040'.

IN ABOVE SPACE DESCRIBE PROPOSED PROGRAM: If proposal is to deepen or plug back, give data on present productive zone and proposed new productive zone. If proposal is to drill or deepen directionally, give pertinent data on subsurface formations and measured and true vertical depths. Give blowout preventer program, if any.

24.

SIGNED

Rose Eastwing

TITLE

Landman

DATE

March 30, 1982

(This space for Federal or State office use)

PERMIT NO.

APPROVAL DATE

APPROVED BY

TITLE

DATE

CONDITIONS OF APPROVAL, IF ANY:

*See Instructions On Reverse Side

NMOC

30-013-20652

5. LEASE DESIGNATION AND SERIAL NO.

Contract #54

6. IF INDIAN, ALLOTTEE OR TRIBE NAME

Jicarilla Apache

7. UNIT AGREEMENT NAME

8. FARM OR LEASE NAME

Jicarilla Tribal Cont. #54

9. WELL NO.

#12

10. FIELD AND POOL, OR WILDCAT

Chacon Dakota Ext.

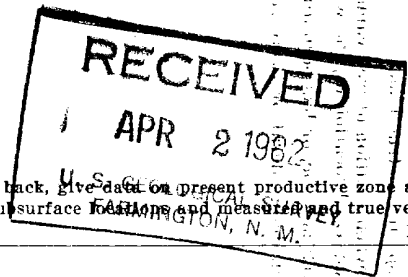
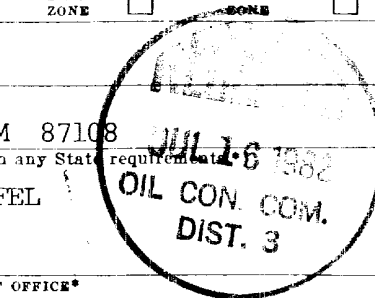
11. SEC., T., R., M., OR BLK.
AND SURVEY OR AREAI
Sec. 4 T22N, R3W

12. COUNTY OR PARISH

Sandoval
Rio Arriba

13. STATE

New Mexico



**NEW MEXICO OIL CONSERVATION COMMISSION
WELL LOCATION AND ACREAGE DEDICATION PLAT**

Form C-102
Supersedes C-128
Effective 1-1-65

All distances must be from the outer boundaries of the Section.

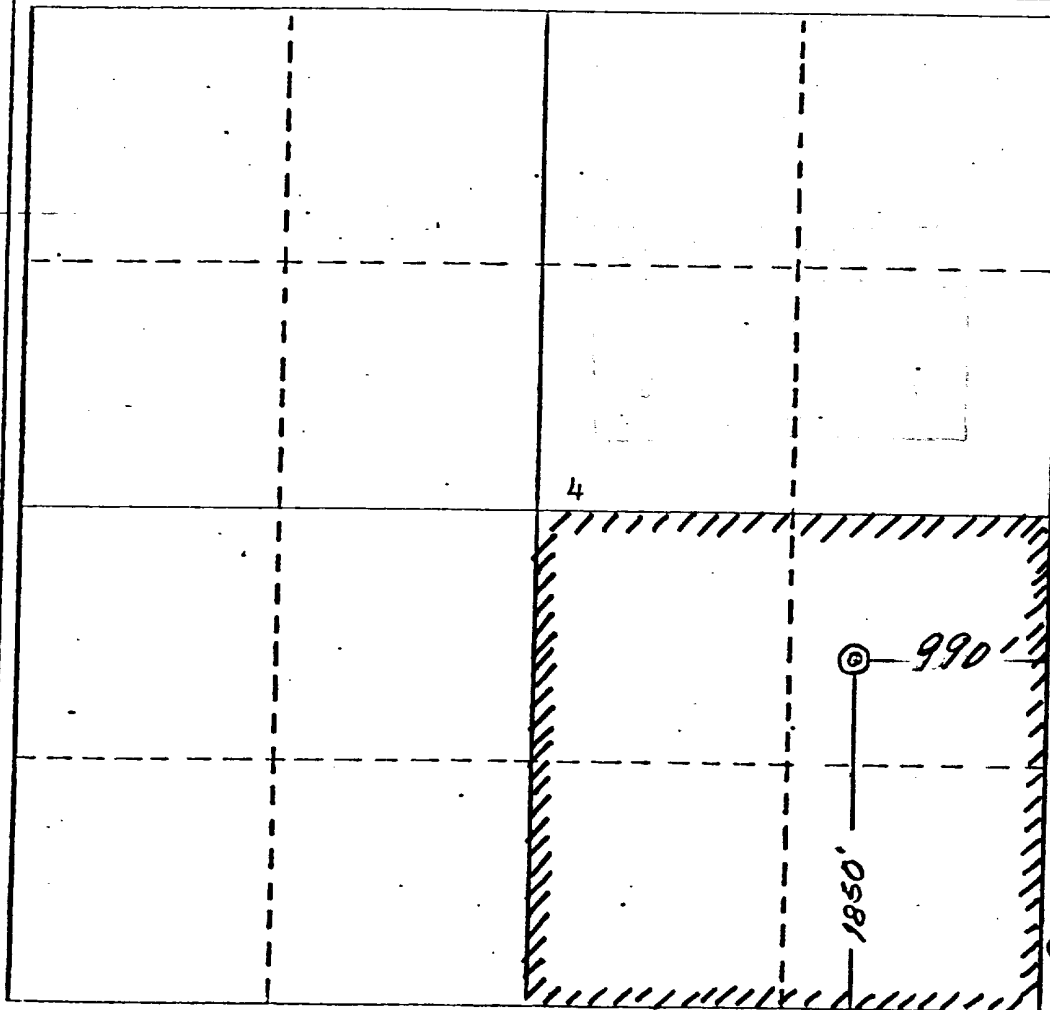
Operator CHACE OIL CO.			Lease CHACE APACHE 54		Well No. 4-12
Unit Letter I	Section 4	Township 22 NORTH	Range 3 WEST	County BLU ARBITA Sandoval	
Actual Footage Location of Well: <div style="display: flex; justify-content: space-between;"> 1850 feet from the SOUTH line and 990 feet from the EAST line </div>					
Ground Level Elev. 7167	Producing Formation DAKOTA	Pool Chacon Dakota	Ext.	Dedicated Acreage 160 Acres	

1. Outline the acreage dedicated to the subject well by colored pencil or hachure marks on the plat below.
2. If more than one lease is dedicated to the well, outline each and identify the ownership thereof (both as to working interest and royalty).
3. If more than one lease of different ownership is dedicated to the well, have the interests of all owners been consolidated by communization, unitization, force-pooling, etc?

☐ Yes ☐ No If answer is "yes," type of consolidation DIST. 3

If answer is "no," list the owners and tract descriptions which have actually been consolidated. (Use reverse side of this form if necessary.)

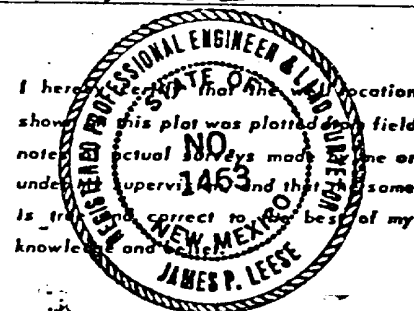
No allowable will be assigned to the well until all interests have been consolidated (by communization, unitization, forced-pooling, or otherwise) or until a non-standard unit, eliminating such interests, has been approved by the Commission.



CERTIFICATION

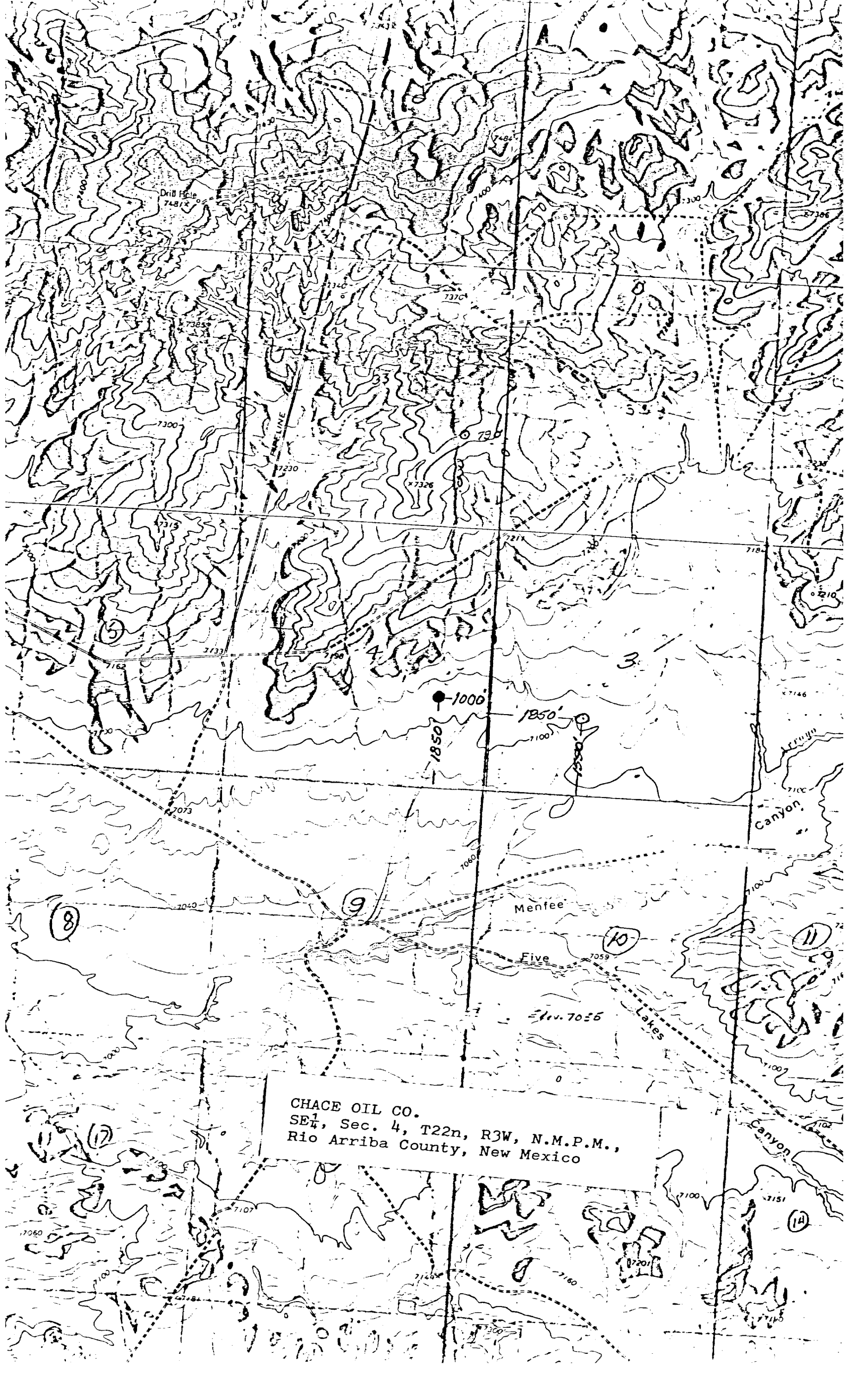
I hereby certify that the information contained herein is true and complete to the best of my knowledge and belief.

Name Ross Easterling
 Position Landman
 Company Chace Oil Company
 Date 5-4-82



Date Surveyed
March 23, 1982
 Registered Professional Engineer and/or Land Surveyor
James P. Leese
 Certificate No.
1463

NMOCC



CHACE OIL CO.
SE $\frac{1}{4}$, Sec. 4, T22n, R3W, N.M.P.M.,
Rio Arriba County, New Mexico