

UNITED STATES  
DEPARTMENT OF THE INTERIOR  
GEOLOGICAL SURVEY

## APPLICATION FOR PERMIT TO DRILL, DEEPEN, OR PLUG BACK

## 1a. TYPE OF WORK

DRILL ☒DEEPEN ☐PLUG BACK ☐

## b. TYPE OF WELL

OIL  
WELL ☐GAS  
WELL ☐

OTHER Injection

SINGLE  
ZONE ☒MULTIPLE  
ZONE ☐

## 2. NAME OF OPERATOR

Noel Reynolds

## 3. ADDRESS OF OPERATOR

c/o A. R. Kendrick, Box 516, Aztec, New Mexico 87410

## 4. LOCATION OF WELL (Report location clearly and in accordance with any State requirements.)\*

At surface

1750' FNL 1230' FEL Sec. 33

At proposed prod. zone

same

## 14. DISTANCE IN MILES AND DIRECTION FROM NEAREST TOWN OR POST OFFICE\*

21 airline miles southwest of Cuba, New Mexico

## 15. DISTANCE FROM PROPOSED\*

LOCATION TO NEAREST  
PROPERTY OR LEASE LINE, FT.

90'

(Also to nearest drlg. unit line, if any)

## 18. DISTANCE FROM PROPOSED LOCATION\*

TO NEAREST WELL, DRILLING, COMPLETED,  
OR APPLIED FOR, ON THIS LEASE, FT.

170'

## 16. NO. OF ACRES IN LEASE

40

## 19. PROPOSED DEPTH

430'

17. NO. OF ACRES ASSIGNED  
TO THIS WELL

40 joint

## 20. ROTARY OR CABLE TOOLS

Rotary

## 21. ELEVATIONS (Show whether DF, RT, GR, etc.)

6450' GR

DRILLING OPERATIONS AUTHORIZED ARE  
SUBJECT TO COMPLIANCE WITH ATTACHED

## 22. APPROX. DATE WORK WILL START\*

July 10, 1983

## 23.

## PROPOSED CASING AND CEMENTING PROGRAM

SIZE OF HOLE	SIZE OF CASING	WEIGHT PER FOOT	SETTING DEPTH	
8.75"	7.0"	23.0#/J-55	35'	8 sx, 9 cu ft. to surface
6.25"	4.5"	10.5#/J-55	330'	43 sx, 51 cu ft. to surface

Drilling contractor to furnish 6½" Regan, bladder type, 3000 psi BOP.

Well is to be drilled using air as circulating fluid.

Formation tops: Mesaverde from surface to Total Depth.

Gas is not dedicated.

IN ABOVE SPACE DESCRIBE PROPOSED PROGRAM: If proposal is to deepen or plug back, give data on present productive zone and proposed new productive zone. If proposal is to drill or deepen directionally, give pertinent data on subsurface locations and measured and true vertical depths. Give blowout preventer program, if any.

## 24.

SIGNED

*AR Kendrick*

TITLE

Agent

DATE

June 20, 1983

(This space for Federal or State office use)

PERMIT NO.

APPROVAL DATE

APPROVED BY

TITLE

CONDITIONS OF APPROVAL, IF ANY:

APPROVED  
AS AMENDED

DATE

JUN 23 1983

JAMES F. SIMS  
DISTRICT ENGINEER

## OIL CONSERVATION DIVISION

STATE OF NEW MEXICO  
OIL AND MINERALS DEPARTMENTP. O. BOX 2048  
SANTA FE, NEW MEXICO 87501Form C-107  
Revised 10-1-78

All distances must be from the outer boundaries of the Section.

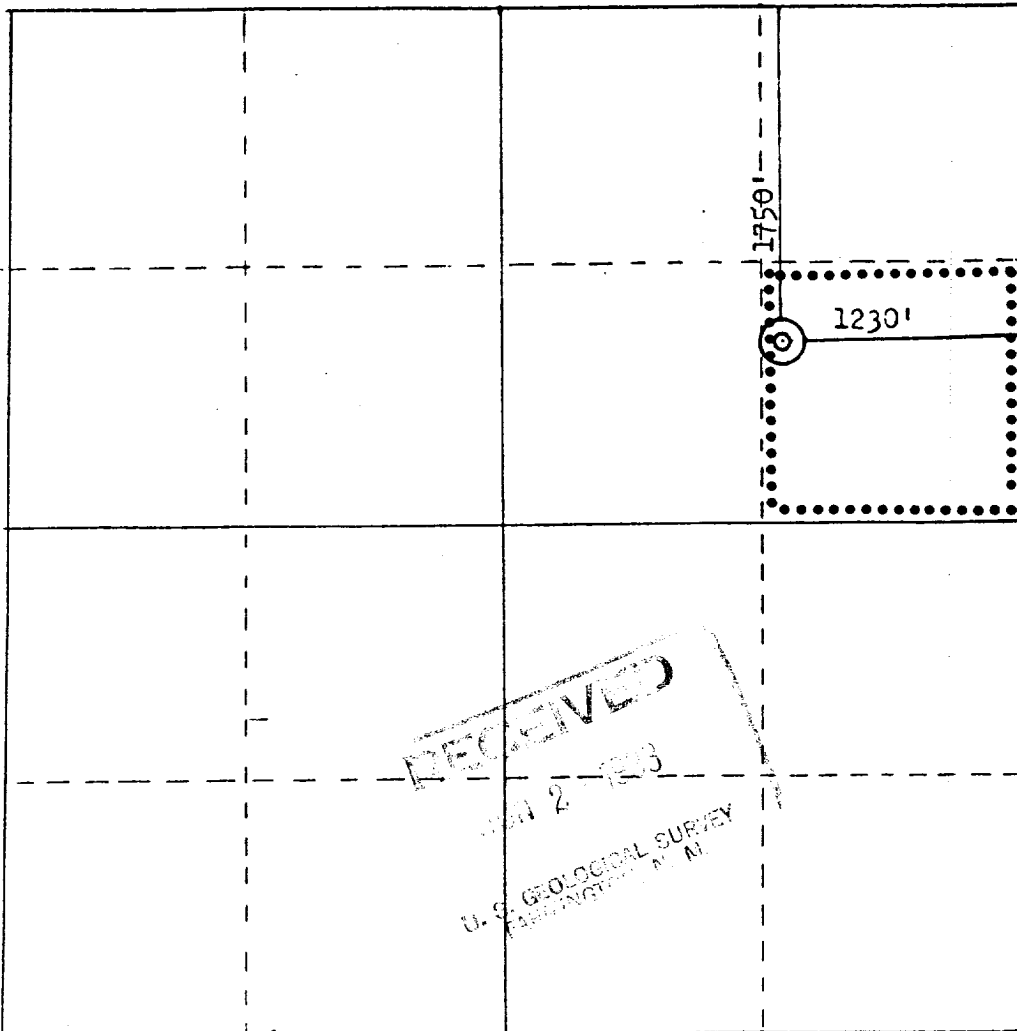
Operator <b>Noel Reynolds</b>		Lease <b>Darla Injection</b>		Well No. <b>1</b>
Unit Letter <b>H</b>	Section <b>33</b>	Township <b>18N</b>	Range <b>3W</b>	County <b>Sandoval</b>
Actual Footage Location of Well: <b>1750</b> feet from the <b>North</b> line and <b>1230</b> feet from the <b>East</b> line				
Ground Level Elev. <b>6450</b>	Producing Formation <b>Mesaverde</b>	Pool <b>South San Luis-Mesaverde Oil</b>	Dedicated Acreage: <b>40</b> Acres	

1. Outline the acreage dedicated to the subject well by colored pencil or hachure marks on the plat below.
2. If more than one lease is dedicated to the well, outline each and identify the ownership thereof (both as to working interest and royalty).
3. If more than one lease of different ownership is dedicated to the well, have the interests of all owners been consolidated by communitization, unitization, force-pooling, etc?

☐ Yes ☐ No If answer is "yes," type of consolidation \_\_\_\_\_

If answer is "no," list the owners and tract descriptions which have actually been consolidated. (Use reverse side of this form if necessary.) \_\_\_\_\_

No allowable will be assigned to the well until all interests have been consolidated (by communitization, unitization, forced-pooling, or otherwise) or until a non-standard unit, eliminating such interests, has been approved by the Commission.

RECEIVED  
JUN 29 1983OIL CON. DIV.  
DIST. 3

Scale: 1"=1000'

## CERTIFICATION

I hereby certify that the information contained herein is true and complete to the best of my knowledge and belief.

Name

Position

Agent

Company

Noel Reynolds

Date

June 10, 1983

I hereby certify that the well location shown on this plat was plotted from field notes of actual surveys made by me or under my supervision, and that the same is true and correct to the best of my knowledge and belief.

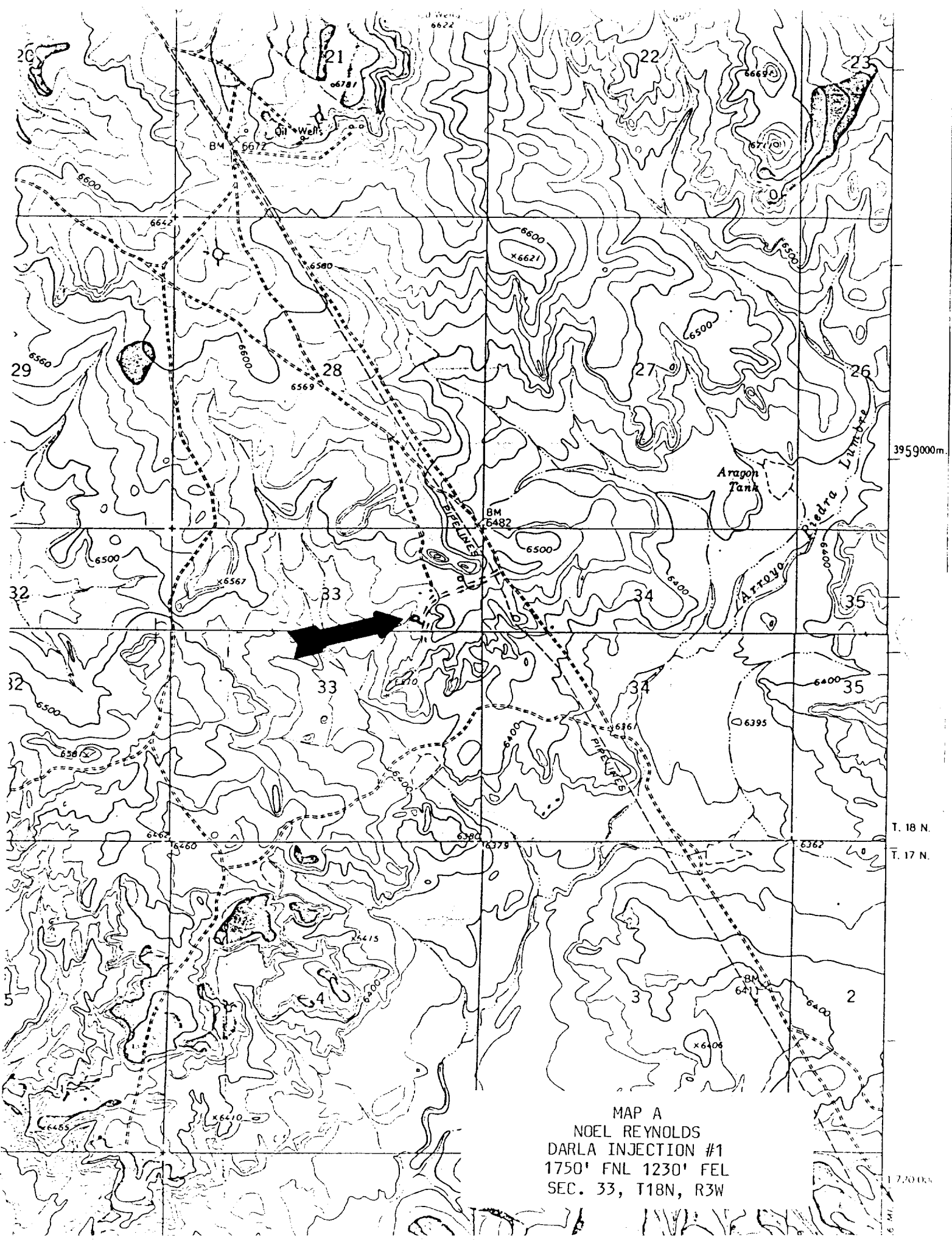
Date Surveyed

June 8, 1983

Registered Professional Engineer  
and Land Surveyor

Fred B. Kerr Jr.

Certificate No. 3950



MAP A  
NOEL REYNOLDS  
DARLA INJECTION #1  
1750' FNL 1230' FEL  
SEC. 33, T18N, R3W

