

UNITED STATES
DEPARTMENT OF THE INTERIOR
GEOLOGICAL SURVEY(Other instructions on
reverse side)

D

30-043-20680

JUL 28 1983

APPLICATION FOR PERMIT TO DRILL, DEEPEN, OR PLUG BACK

1a. TYPE OF WORK

DRILL ☐DEEPEN ☐OIL CON. DIV.
PLUG BACK ☐
DIST. 3

b. TYPE OF WELL

OIL
WELL ☒GAS
WELL ☐OTHER ☐SINGLE
ZONE ☒MULTIPLE
ZONE ☐

2. NAME OF OPERATOR

Aztec Energy Corporation

3. ADDRESS OF OPERATOR

1206 East 20th Street, Farmington, N. M. 87401

4. LOCATION OF WELL (Report location clearly and in accordance with any State requirements.)

At surface 2105' FSL 1940' FEL

At proposed prod. zone

2105' FSL 1940' FEL

14. DISTANCE IN MILES AND DIRECTION FROM NEAREST TOWN OR POST OFFICE*

2 miles Southwest of Counselors, N.M.

15. DISTANCE FROM PROPOSED*

LOCATION TO NEAREST
PROPERTY OR LEASE LINE, FT.
(Also to nearest drlg. unit line, if any)

1940

18. DISTANCE FROM PROPOSED LOCATION*

TO NEAREST WELL, DRILLING, COMPLETED,
OR APPLIED FOR, ON THIS LEASE, FT.

1900

21. ELEVATIONS (Show whether DF, RT, GR, etc.)

7177 GR 7175'

23.

PROPOSED CASING AND CEMENTING PROGRAM

This action is subject to administrative
appeal pursuant to 30 CFR 250.

SIZE OF HOLE	SIZE OF CASING	WEIGHT PER FOOT	SETTING DEPTH	QUANTITY OF CEMENT
12-1/4"	8-5/8"	24.0#	250	200 Sk. Class B w/2% KCL
7-7/8"	5-1/2"	14.0 & 15.5#	5800	950 Sk. Class B

1. Drill 12-1/4" hole with rotary tools to approximately 250 feet and run new 8-5/8" 24.0#/ft. casing. Cement casing with approximately 200 Sk Class B cement, circulating to surface.
2. Install BOP and test casing and BOP to 1000 psig.
3. Drill 7-7/8" hole to approximately 5800 feet with fresh water gel mud.
4. Log well.
5. Run and set new 5-1/2" casing and cement in two stages, cement to cover Ojo Alamo.
6. Perforate and stimulate Gallup Formation. Clean up well and complete as required.

IN ABOVE SPACE DESCRIBE PROPOSED PROGRAM: If proposal is to deepen or plug back, give data on present productive zone and proposed new productive zone. If proposal is to drill or deepen directionally, give pertinent data on subsurface locations and measured and true vertical depths. Give blowout preventer program, if any.

24.

SIGNED

Ronnie W. Allen

(This space for Federal or State office use)

TITLE

Geologist

DATE

March 22, 1983

PERMIT NO.

APPROVAL DATE

APPROVED BY

TITLE

CONDITIONS OF APPROVAL, IF ANY:

APPROVED
AS AMENDED

JUL 7 1983

R. Bingham
for Area Mgr.

NACCS

All distances must be from the outer boundaries of the Section.

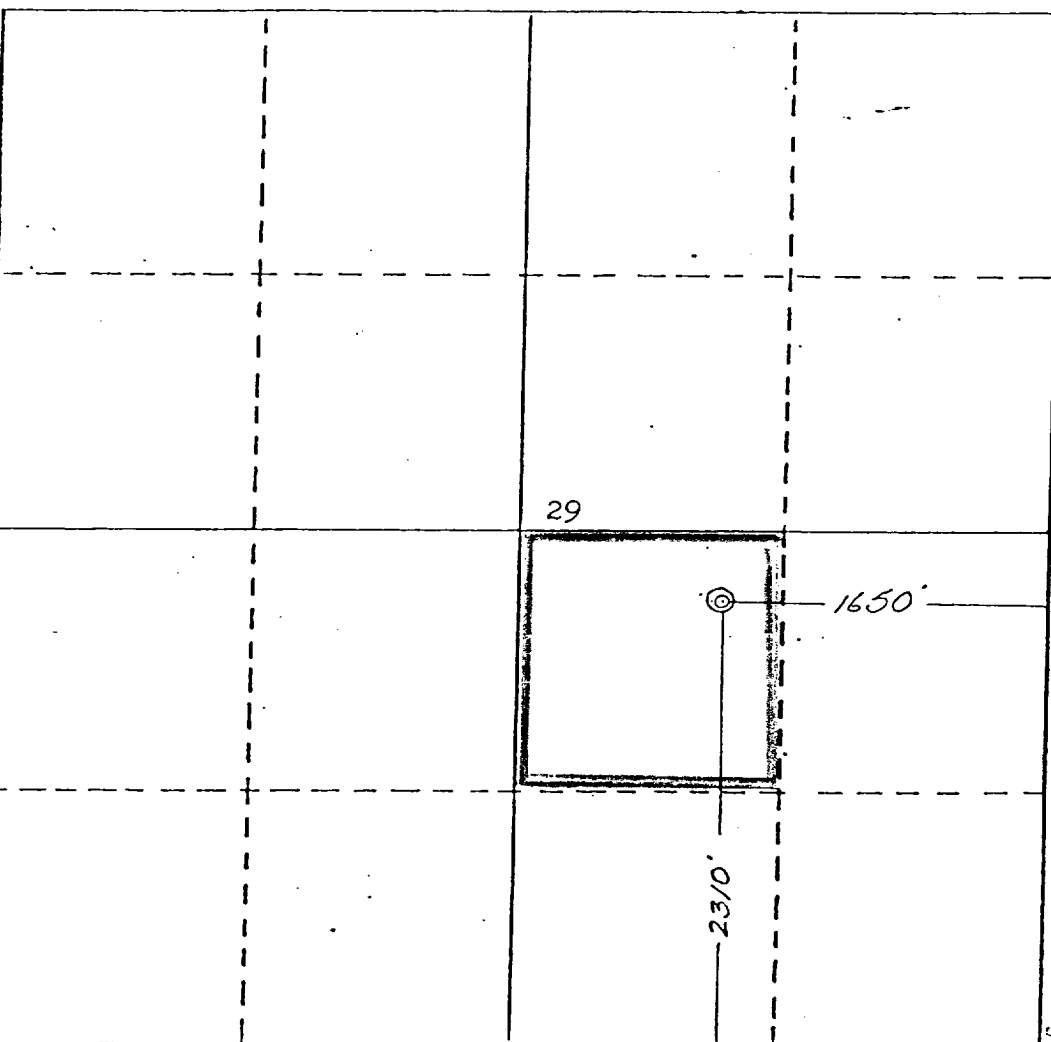
Operator AZTEC ENERGY CORPORATION			Lease LULU		Well No. #4
Unit Letter J	Section 29	Township 23 NORTH	Range 6 WEST	County SANDOVAL	
Actual Footage Location of Well: 2310 feet from the SOUTH line and 1650 feet from the EAST line					
Ground Level Elev. 7175	Producing Formation GALLUP	Pool LYBROOK GALLUP Ext			Dedicated Acreage: 40 Acres

1. Outline the acreage dedicated to the subject well by colored pencil or hachure marks on the plat below.
2. If more than one lease is dedicated to the well, outline each and identify the ownership thereof (both as to working interest and royalty).
3. If more than one lease of different ownership is dedicated to the well, have the interests of all owners been consolidated by communitization, unitization, force-pooling, etc?

☐ Yes ☐ No If answer is "yes," type of consolidation _____

If answer is "no," list the owners and tract descriptions which have actually been consolidated. (Use reverse side of this form if necessary.) _____

No allowable will be assigned to the well until all interests have been consolidated (by communitization, unitization, forced-pooling, or otherwise) or until a non-standard unit, eliminating such interests, has been approved by the Division



CERTIFICATION

I hereby certify that the information contained herein is true and complete to the best of my knowledge and belief.

Ronnie W. Allen
Ronnie W. Allen

Name

Geologist

Position

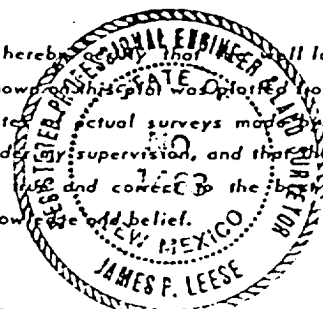
Aztec Energy Corporation

Company

May 27, 1983

Date

I hereby certify that the well location shown on this plat was plotted from field notes, actual surveys made by me or under my supervision, and that the same is true and correct to the best of my knowledge and belief.



Date Surveyed

May 24, 1983

Registered Professional Engineer
and/or Land Surveyor

James P. Leese

James P. Leese

Certificate No.

1463

