

UNITED STATES  
DEPARTMENT OF THE INTERIOR  
GEOLOGICAL SURVEY(Other instructions on  
reverse side)

30-043-20699

## APPLICATION FOR PERMIT TO DRILL, DEEPEN, OR PLUG BACK

## 1a. TYPE OF WORK

DRILL ☒DEEPEN ☐PLUG BACK ☐

## b. TYPE OF WELL

OIL  
WELL ☒GAS  
WELL ☐

OTHER

SINGLE  
ZONE ☐MULTIPLE  
ZONE ☐

## 2. NAME OF OPERATOR

Cotton Petroleum Corporation

## 3. ADDRESS OF OPERATOR

3773 Cherry Creek Drive North #750, Denver, Colorado 80209

## 4. LOCATION OF WELL (Report location clearly and in accordance with any State requirements.)\*

At surface

470' FSL 1875' FWL Section 27

At proposed prod. zone

14. DISTANCE IN MILES AND DIRECTION FROM NEAREST TOWN OR POST OFFICE  
BUREAU OF LAND MANAGEMENT  
FARMINGTON RESOURCE AREA

## 15. DISTANCE FROM PROPOSED\*

LOCATION TO NEAREST  
PROPERTY OR LEASE LINE, FT.  
(Also to nearest drlg. unit line, if any)

## 16. NO. OF ACRES IN LEASE

2237.40

17. NO. OF ACRES ASSIGNED  
TO THIS WELL

40

18. DISTANCE FROM PROPOSED LOCATION\*  
TO NEAREST WELL, DRILLING, COMPLETED,  
OR APPLIED FOR, ON THIS LEASE, FT.

## 19. PROPOSED DEPTH

2180'

## 20. ROTARY OR CABLE TOOLS

Rotary

## 21. ELEVATIONS (Show whether DF, RT, GR, etc.)

7133' GR

## 22. APPROX. DATE WORK WILL START\*

1-15-84

## 23. PROPOSED CASING AND CEMENTING PROGRAM

SIZE OF HOLE	SIZE OF CASING	WEIGHT PER FOOT	SETTING DEPTH	QUANTITY OF CEMENT
12-1/4"	9-5/8"	36#	300'	375 sxs
8-3/4"	7"	23#	1700'	to be determined
6-1/4"	4-1/2"	10.5#	2180'	to be determined

It is proposed to drill this well with rotary tools using air as a circulation medium through the Gallup to a TD of 2180'. The anticipated completion attempt will be made in the Gallup. Production casing will be cemented in such a way as to protect the up hole formations. The reserve pit will be fenced on three sides before spudding. The fourth side will be fenced when the rig moves out.

## Estimated Formation Tops

Cliff House	20'	Mancos	836'
Menefee	145'	Gallup	1672'
Pt. Lookout	601'	TD	2180'

RECEIVED

NOV 29 1983

OIL CON. DIV.  
DIST. 3

IN ABOVE SPACE DESCRIBE PROPOSED PROGRAM: If proposal is to deepen or plug back, give data on present productive zone and proposed new productive zone. If proposal is to drill or deepen directionally, give pertinent data on subsurface locations and measured and true vertical depths. Give blowout preventer program, if any.

24.

SIGNED

TITLE Division Production Manager DATE October 26, 1983

(This space for Federal or State office use)

PERMIT NO.

APPROVAL DATE

APPROVED BY

TITLE

CONDITIONS OF APPROVAL, IF ANY:

APPROVED  
AS AMENDED  
DATE

NOV 23 1983

M. MILLENBACH  
AREA MANAGER

Tite Hole NMOCG

## Instructions

**General:** This form is designed for submitting proposals to perform certain well operations, as indicated, on all types of lands and leases for appropriate action by either a Federal or a State agency, or both, pursuant to applicable Federal and/or State laws and regulations. Any necessary special instructions concerning the use of this form and the number of copies to be submitted, particularly with regard to local, area, or regional procedures and practices, either are shown below or will be issued by, or may be obtained from, the local Federal and/or State office.

**Item 1:** If the proposal is to redrill to the same reservoir at a different subsurface location or to a new reservoir, use this form with appropriate notations. Consult applicable State or Federal regulations concerning subsequent work proposals or reports on the well.

**Item 4:** If there are no applicable State requirements, locations on Federal or Indian land should be described in accordance with Federal requirements. Consult local State or Federal office for specific instructions.

**Item 14:** Needed only when location of well cannot readily be found by road from the land or lease description. A plat, or plats, separate or on this reverse side, showing the roads to, and the surveyed location of, the well, and any other required information, should be furnished when required by Federal or State agency offices.

**Items 15 and 18:** If well is to be, or has been directionally drilled, give distances for subsurface location of hole in any present or objective production zone.

**Item 22:** Consult applicable Federal or State regulations, or appropriate officials, concerning approval of the proposal before operations are started.

All distances must be from the outer boundaries of the Section.

Operator <b>COTTON PETROLEUM COMPANY</b>			Lease <b>ROSS-FEDERAL</b> 27		Well No. <b>24-22</b>
Unit Letter <b>N</b>	Section <b>27</b>	Township <b>20N</b>	Range <b>1W</b>	County <b>Sandoval</b>	
Actual Footage Location of Well: <b>470</b> feet from the <b>South</b> line and <b>1875</b> feet from the <b>West</b> line					
Ground Level Elev. <b>7133</b>	Producing Formation <b>GALLUP</b>		Pool <b>Wildcat</b>		Dedicated Acreage: <b>40</b> Acres

1. Outline the acreage dedicated to the subject well by colored pencil or hachure marks on the plat below.
2. If more than one lease is dedicated to the well, outline each and identify the ownership thereof (both as to working interest and royalty).
3. If more than one lease of different ownership is dedicated to the well, have the interests of all owners been consolidated by communitization, unitization, force-pooling, etc?

☐ Yes ☐ No If answer is "yes," type of consolidation \_\_\_\_\_

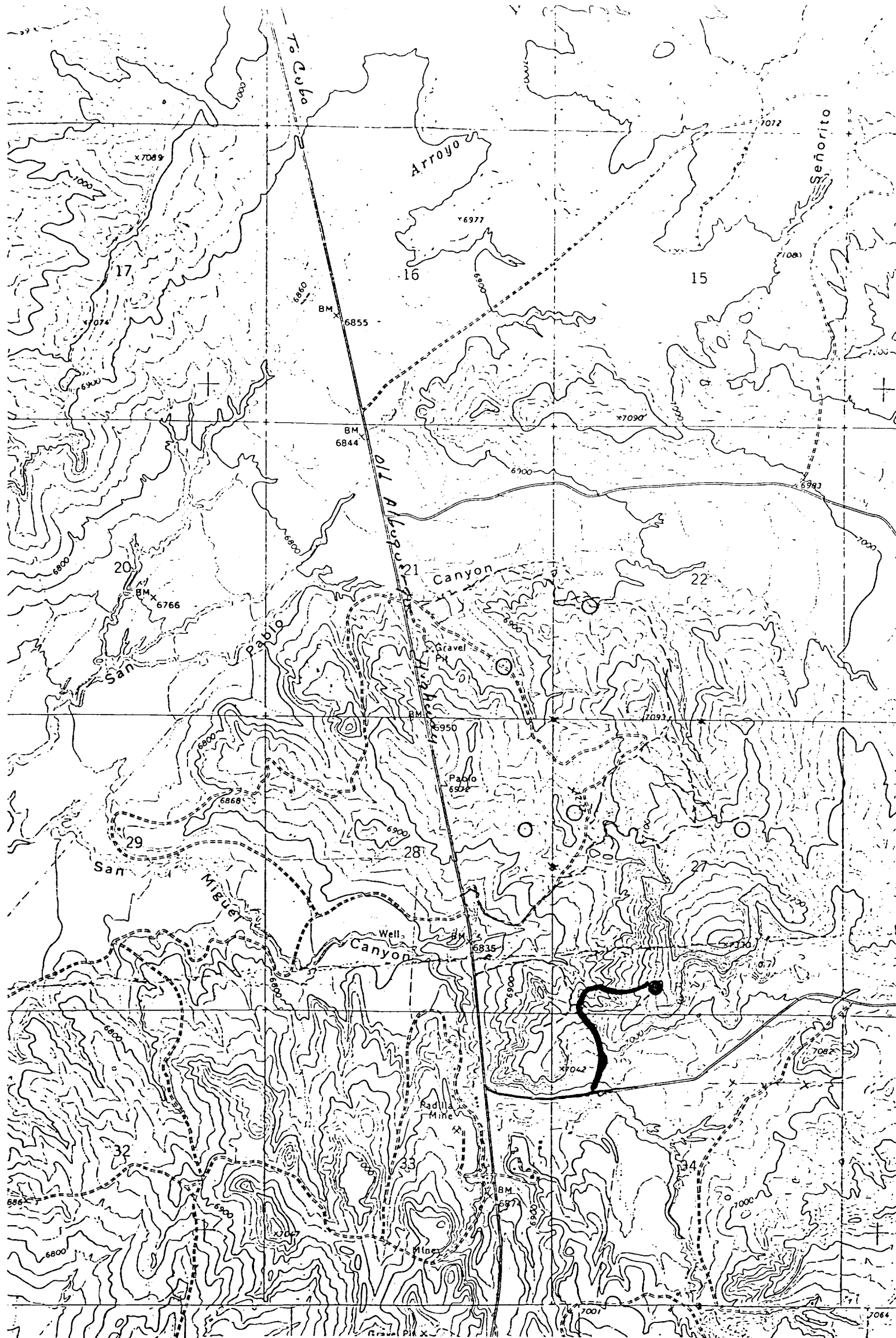
If answer is "no," list the owners and tract descriptions which have actually been consolidated. (Use reverse side of this form if necessary.) \_\_\_\_\_

No allowable will be assigned to the well until all interests have been consolidated (by communitization, unitization, forced-pooling, or otherwise) or until a non-standard unit, eliminating such interests, has been approved by the Commission.

		<p>27</p> <p><b>RECEIVED</b></p> <p><b>OCT 31 1983</b></p> <p>BUREAU OF LAND MANAGEMENT FARMINGTON RESOURCE AREA</p>

Scale: 1"=1000'

<p><b>CERTIFICATION</b></p> <p>I hereby certify that the information contained herein is true and complete to the best of my knowledge and belief.</p>	
Name	<b>DE Wood / JGJ</b>
Position	<b>Division Production Mngt</b>
Company	<b>Cotton Petroleum Corp</b>
Date	<b>10/27/83</b>
<p>I hereby certify that the well location shown on this plat was plotted from field notes of actual surveys made by me or under my supervision, and that the same is true and correct to the best of my knowledge and belief.</p>	
Date Surveyed	<b>September 26, 1983</b>
Registered Professional Engineer and Land Surveyor	<b>Fred B. Kerr Jr.</b>
Certificate No.	<b>3950</b>



Vicinity Map for  
COTTON PETROLEUM COMPANY #24-27 ROSS-FEDERAL  
470'FSL 1875'FWL Sec. 27-T20N-R1W  
SANDOVAL COUNTY, NEW MEXICO