

UNITED STATES  
DEPARTMENT OF THE INTERIOR  
BUREAU OF LAND MANAGEMENT

APPLICATION FOR PERMIT TO DRILL, DEEPEN, OR PLUG BACK

1a. TYPE OF WORK DRILL ☒ DEEPEN ☐ PLUG BACK ☐

b. TYPE OF WELL OIL WELL ☒ GAS WELL ☐ OTHER ☐ SINGLE ZONE ☐ MULTIPLE ZONE ☐

2. NAME OF OPERATOR Gary-Williams Oil Producer, Inc. c/o Ned Dollar (Agent)

3. ADDRESS OF OPERATOR P.O. Box 399 Aztec, NM 87410

4. LOCATION OF WELL (Report location clearly and in accordance with any State requirements.)\*  
At surface 660' FNL & 1980' FEL Section 12-20N-3W, E3W, E3D  
At proposed prod. zone MAY 08 1984

14. DISTANCE IN MILES AND DIRECTION FROM NEAREST TOWN OR POST OFFICE\*  
8 miles south and 3 miles west of Gallup, NM. SOURCE AREA

15. DISTANCE FROM PROPOSED\*  
LOCATION TO NEAREST  
PROPERTY OR LEASE LINE, FT.  
(Also to nearest drig. unit line, if any)

16. NO. OF ACRES IN LEASE 1760

17. NO. OF ACRES ASSIGNED  
TO THIS WELL E 320

18. DISTANCE FROM PROPOSED LOCATION\*  
TO NEAREST WELL, DRILLING, COMPLETED,  
OR APPLIED FOR, ON THIS LEASE, FT.

19. PROPOSED DEPTH 4661'

20. ROTARY OR CABLE TOOLS Rotary

21. ELEVATIONS (Show whether DF, RT, GR, etc.) 6945' GR DRILLING OPERATIONS AUTHORIZED ARE  
SUBJECT TO COMPLIANCE WITH ATTACHED

22. APPROX. DATE WORK WILL START\*

This action is subject to administrative  
appeal pursuant to 30 CFR 290.

23. "GENERAL REQUIREMENTS"  
PROPOSED CASING AND CEMENTING PROGRAM

SIZE OF HOLE	SIZE OF CASING	WEIGHT PER FOOT	SETTING DEPTH	QUANTITY OF CEMENT
13-1/2"	9-5/8"	36# J-55	200'	Cement to surface
8-3/4"	7"	23# K-55	3865'	Determined by Caliper Log
6"	4-1/2"	10.50 J	4661'	5 sx cement

Drill 13-1/2" Surface hole to 200'. Cmt. to surface. Drill 8-3/4" hole to 3865'.  
Cement thru Ojo Alamo. Run 7" 23# K-55 LTC to TD. Cmt. w/approximate 1000' fill.

Surface to be drilled with 9# mud weight viscosity 45' to 200', from 200' to  
50' above Gallup, will be drilled with 14# mud weight viscosity. From 50' above  
Gallup to TD with air mist.

Gary-Williams Oil Producer, Inc. proposes to drill to 4661'.

IN ABOVE SPACE DESCRIBE PROPOSED PROGRAM: If proposal is to deepen or plug back, give data on present productive zone and proposed new productive  
zone. If proposal is to drill or deepen directionally, give pertinent data on subsurface locations and measured and true vertical depths. Give blowout  
preventer program, if any.

24. SIGNED Ned Dollar TITLE Agent

(This space for Federal or State office use)

PERMIT NO.

APPROVED BY

CONDITIONS OF APPROVAL, IF ANY

APPROVAL DATE

TITLE

(SGD) MATTHEW N. MILLENBACH

DATE

AREA MANAGER  
FARMINGTON RESOURCE AREA

APPROVED

DATE May 2, 1984  
AS AMENDED

JUN 13 1984

RECEIVED  
JUN 18 1984

OIL CON. DIV.  
DIST. 3

NMOCC

STATE OF NEW MEXICO  
ENERGY AND MINERALS DEPARTMENT

OIL CONSERVATION DIVISION

P. O. BOX 2088  
SANTA FE, NEW MEXICO 87501

Form C-102  
Revised 10-1-78

All distances must be from the outer boundaries of the Section.

Operator Gary-Williams Oil Producer, Inc.		Lease San Isidro 12		Well No. 2
Unit Letter B	Section 12	Township 20N	Range 3W	County Sandoval
Actual Footage Location of Well: 1980 feet from the East line and 660 feet from the North line				
Ground Level Elev. 6945'	Producing Formation Mancos	Pool Rio Puerco	Dedicated Acreage: E-320 Acres	

1. Outline the acreage dedicated to the subject well by colored pencil or hachure marks on the plat below.
2. If more than one lease is dedicated to the well, outline each and identify the ownership thereof (both as to working interest and royalty).
3. If more than one lease of different ownership is dedicated to the well, have the interests of all owners been consolidated by communitization, unitization, force-pooling, etc?

☐ Yes ☒ No If answer is "yes," type of consolidation \_\_\_\_\_

If answer is "no," list the owners and tract descriptions which have actually been consolidated. (Use reverse side of this form if necessary.) \_\_\_\_\_

No allowable will be assigned to the well until all interests have been consolidated (by communitization, unitization, forced-pooling, or otherwise) or until a non-standard unit, eliminating such interests, has been approved by the Division.

RECEIVED  
JUN 18 1984  
OIL CON. DIV.  
DIST. 3

RECEIVED  
MAY 20 1984  
OIL CON. DIV.  
DIST. 3

12

1980'

660'

NEED TO BE COPIED

CERTIFICATION

I hereby certify that the information contained herein is true and complete to the best of my knowledge and belief.

*Ray Hager*

Name  
Ray Hager

Position  
Operations Superintendent

Company  
Gary-Williams Oil Producer

Date  
May 14, 1984

I hereby certify that the well location shown on this plot was plotted from field notes of actual surveys made by me or under my supervision, and that the same is true and correct to the best of my knowledge and belief.

Date Surveyed

Registered Professional Engineer  
and/or Land Surveyor

Certificate No.

ADRIANGLE  
AL CO.  
POGRAPHIC)

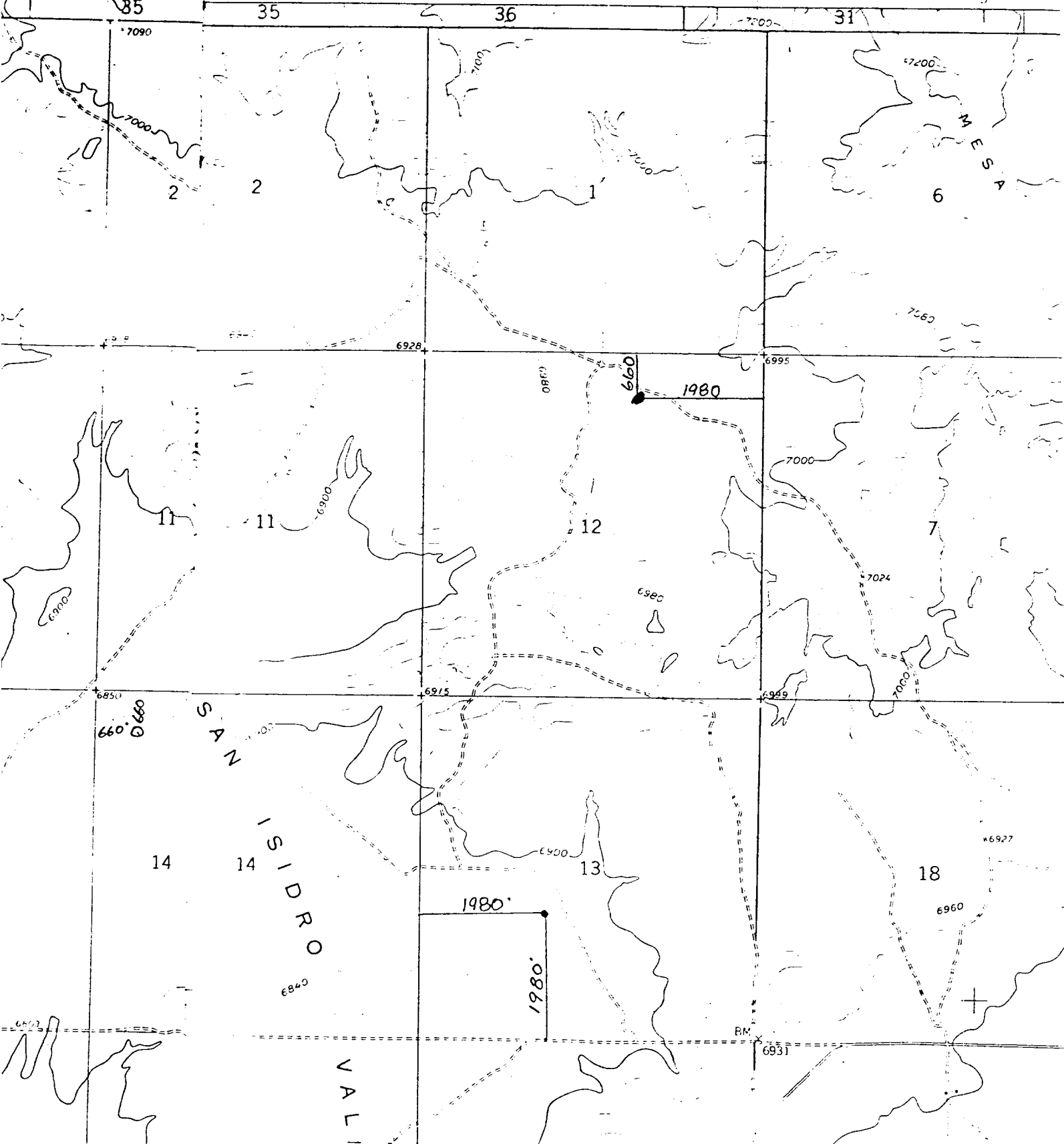
UNITED STATES  
DEPARTMENT OF THE INTERIOR  
GEOLOGICAL SURVEY

107°

309000m.E.

R 3 W R 2 W

5'



GARY-WILLIAMS OIL PRODUCER, INC.  
San Ysidro 12 #2  
NW $\frac{1}{4}$ NE $\frac{1}{4}$ , Sec. 12, T20N, R3W, N.M.P.M.,  
Sandoval County, New Mexico