

UNITED STATES
DEPARTMENT OF THE INTERIOR
BUREAU OF LAND MANAGEMENT

APPLICATION FOR PERMIT TO DRILL, DEEPEN, OR PLUG BACK

1a. TYPE OF WORK DRILL ☒ DEEPEN ☐ PLUG BACK ☐

b. TYPE OF WELL OIL WELL ☒ GAS WELL ☐ OTHER ☐ SINGLE ZONE ☐ MULTIPLE ZONE ☐

2. NAME OF OPERATOR Gary-Williams Oil Producer, Inc. c/o Ned Dollar, (Agent)

3. ADDRESS OF OPERATOR P.O. Box 399 Aztec, NM 87410

4. LOCATION OF WELL (Report location clearly and in accordance with any State requirements.)*
At surface 660' FNL & 660' FWL Section 12, T.20N., R.3W.

At proposed prod. zone

14. DISTANCE IN MILES AND DIRECTION FROM NEAREST TOWN OR POST OFFICE*
Approximatley 3 miles south and 8 miles west of Cuba, NM.

15. DISTANCE FROM PROPOSED* LOCATION TO NEAREST PROPERTY OR LEASE LINE, FT. (Also to nearest drlg. unit line, if any)

18. DISTANCE FROM PROPOSED LOCATION* TO NEAREST WELL, DRILLING COMPLETED, OR APPLIED FOR, ON THIS LEASE, FT.

21. ELEVATIONS (Show whether DF, RT, GR, etc.)
6931' GR

23. PROPOSED CASING AND CEMENTING PROGRAM

5. LEASE DESIGNATION AND SERIAL NO.

NM-36096

6. IF INDIAN, ALLOTTEE OR TRIBE NAME

7. UNIT AGREEMENT NAME

8. FARM OR LEASE NAME

San Isidro 12

9. WELL NO.

#4

10. FIELD AND POOL, OR WILDCAT

Rio Puerto Mancos

11. SEC., T., R., M., OR BLK. AND SURVEY OR AREA

D NWNW Sec. 12, T20N-R3W

12. COUNTY OR PARISH 13. STATE

Sandoval

NM

17. NO. OF ACRES ASSIGNED TO THIS WELL

W/320

20. ROTARY OR CABLE TOOLS

Rotary

22. APPROX. DATE WORK WILL START*

Upon approval by BLM

This action is subject to administrative appeal pursuant to 30 CFR 290.

SIZE OF HOLE	SIZE OF CASING	WEIGHT PER FOOT	SETTING DEPTH	QUANTITY OF CEMENT
13-1/2"	9-5/8"	36# J-55	200'	Cement to Surface
8-3/4"	7"	23# K-55	3865'	Determined by Caliper Log
6"	4-1/2"	10.50 J	4661'	5 sx cement

Drill 13-1/2" surface hole to 200'. Cmt. to surface. Drill 8-3/4" hole to 3865'. Cement thru Ojo Alamo. Run 7" 23# K-55 LTC to TD. Cmt. w/approximate 1000' fill.

Surface to be drilled with 9# mud weight viscosity 45' to 200'. From 200' to 50 above Gallup, will be drilled with 14# mud weight viscosity. From 50' above Gallup to TD with air mist.

RECEIVED
JUL 03 1984

OIL CON. DIV.
DIST. 3

BUREAU OF LAND MANAGEMENT
FARMINGTON RESOURCE AREA

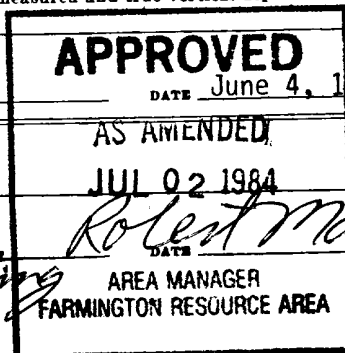
IN ABOVE SPACE DESCRIBE PROPOSED PROGRAM: If proposal is to deepen or plug back, give data on present productive zone and proposed new productive zone. If proposal is to drill or deepen directionally, give pertinent data on subsurface locations and measured and true vertical depths. Give blowout preventer program, if any.

24. SIGNED Ned Dollar TITLE Agent DATE June 4, 1984

(This space for Federal or State office use)

PERMIT NO. APPROVAL DATE

APPROVED BY Robert Moore TITLE Area Manager
CONDITIONS OF APPROVAL, IF ANY:



NMOCC

*See Instructions On Reverse Side

and willfully to make to any department or agency of the

OIL CONSERVATION DIVISION

STATE OF NEW MEXICO

P. O. BOX 2048

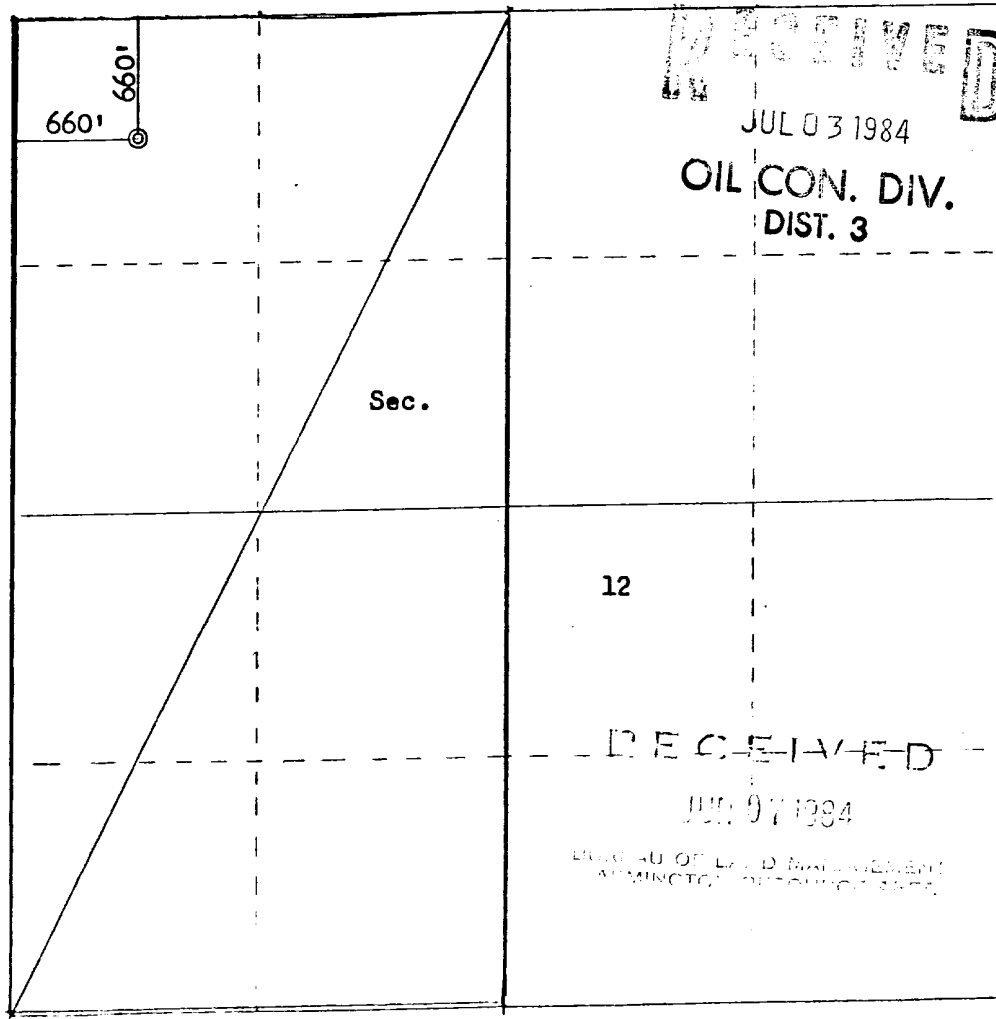
Form C-107
Revised 10-1-7

OIL AND MINERALS DEPARTMENT

SANTA FE, NEW MEXICO 87501

All distances must be from the outer boundaries of the Section.

Operator GARY-WILLIAMS OIL PRODUCER, INC.			Lease SAN ISIDRO 12		Well No. 4
Unit Letter D	Section 12	Township 20N	Range 3W	County Sandoval	
Actual Footage Location of Well: 660 feet from the North line and 660 feet from the West line					
Ground Level Elev. 6931	Producing Formation Rio Puerco		Pool Mancos	Dedicated Acreage: 320 Acres	
<p>1. Outline the acreage dedicated to the subject well by colored pencil or hatchure marks on the plat below.</p> <p>2. If more than one lease is dedicated to the well, outline each and identify the ownership thereof (both as to working interest and royalty).</p> <p>3. If more than one lease of different ownership is dedicated to the well, have the interests of all owners been consolidated by communitization, unitization, force-pooling, etc?</p> <p><input type="checkbox"/> Yes <input checked="" type="checkbox"/> No <i>allowable</i> If answer is "yes," type of consolidation _____</p> <p>If answer is "no," list the owners and tract descriptions which have actually been consolidated. (Use reverse side of this form if necessary.) _____</p> <p>No allowable will be assigned to the well until all interests have been consolidated (by communitization, unitization, forced-pooling, or otherwise) or until a non-standard unit, eliminating such interests, has been approved by the Commission.</p>					



CERTIFICATION

I hereby certify that the information contained herein is true and complete to the best of my knowledge and belief.

Ned Dollar

Name
Ned Dollar

Position
Agent

Company
Gary-Williams Oil Prod.

Date
June 6, 1984

I hereby certify that the well location shown on this plat was plotted from field notes of actual surveys made by me or under my supervision, and that the same is true and correct to the best of my knowledge and belief.

Date Surveyed
June 4, 1984

Registered Professional Engineer
and
Land Surveyor

Fred B. Kerr Jr.
Fred B. Kerr Jr.

Certificate No. **4211**

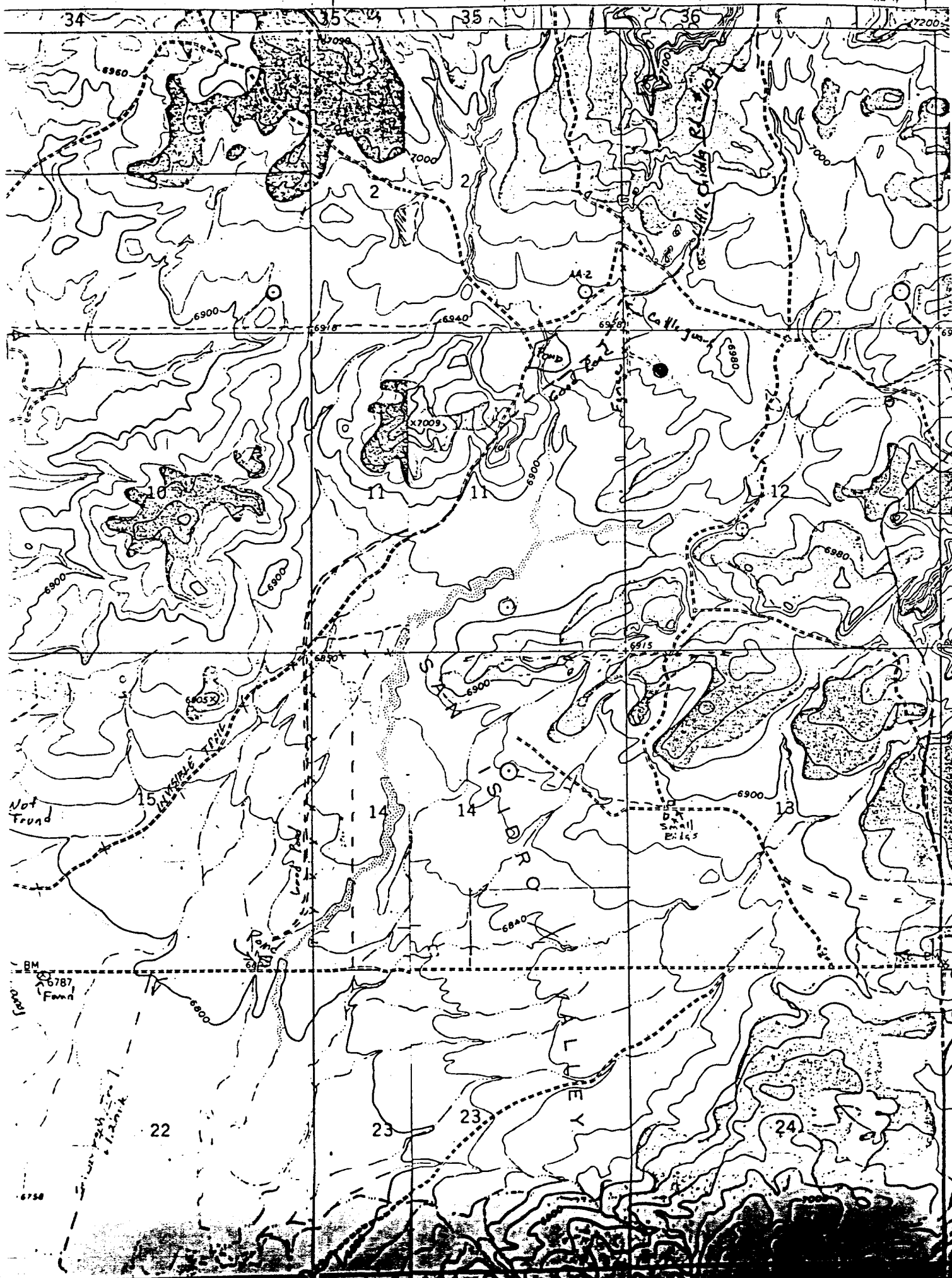
JOHNSON TRADING POST QUADRANGLE
NEW MEXICO-SANDOVAL CO.
7.5 MINUTE SERIES (TOPOGRAPHIC)

UNITED STATES
DEPARTMENT OF THE INTERIOR
GEOLOGICAL SURVEY

107° 30'

309000m. E.

R. 3 W. R. 2 W.



VIABILITY MAP FOR
GARY-WILLIAMS OIL PRODUCE, INC. & ASSOCIATES
660' FWL 660' FWL 660' FWL 660' FWL
SANDOVAL COUNTY, NEW MEXICO