

UNITED STATES  
DEPARTMENT OF THE INTERIOR  
BUREAU OF LAND MANAGEMENT

APPLICATION FOR PERMIT TO DRILL, DEEPEN, OR PLUG BACK

1a. TYPE OF WORK

DRILL ☒

DEEPEN ☐

PLUG BACK ☐

b. TYPE OF WELL

OIL  
WELL ☒

GAS  
WELL ☐

OTHER ☐

SINGLE  
ZONE ☐

MULTIPLE  
ZONE ☐

2. NAME OF OPERATOR

Gary-Williams Oil Producer, Inc. c/o Ned Dollar, Agent

3. ADDRESS OF OPERATOR

P.O. Box 399 Aztec, NM 87410

4. LOCATION OF WELL (Report location clearly and in accordance with any State requirements.)\*

At surface

1980 FSL & 1980 FWL Section 7, T20N., R2W

At proposed prod. zone

1650

RECEIVED

MAY 08 1984

14. DISTANCE IN MILES AND DIRECTION FROM NEAREST TOWN OR POST OFFICE\*

3 1/2 miles south and 7 miles west of Cuba, NM

15. DISTANCE FROM PROPOSED\*

LOCATION TO NEAREST

PROPERTY OR LEASE LINE, FT.

(Also to nearest drig. unit line, if any)

18. DISTANCE FROM PROPOSED LOCATION\*

TO NEAREST WELL, DRILLING, COMPLETED,

OR APPLIED FOR, ON THIS LEASE, FT.

16. NO. OF ACRES IN LEASE

3,435.72

19. PROPOSED DEPTH

17. NO. OF ACRES ASSIGNED  
TO THIS WELL

20. ROTARY OR CABLE TOOLS

Rotary

21. ELEVATIONS (Show whether DF, RT, GR, etc.)

7017' GR

DRILLING OPERATIONS AUTHORIZED ARE  
SUBJECT TO COMPLIANCE WITH ATTACHED  
"GENERAL REQUIREMENTS"

22. APPROX. DATE WORK WILL START\*

May 15, 1984

23.

PROPOSED CASING AND CEMENTING PROGRAM

This action is subject to administrative  
appeal pursuant to 30 CFR 290.

SIZE OF HOLE	SIZE OF CASING	WEIGHT PER FOOT	SETTING DEPTH	QUANTITY OF CEMENT
13-1/2	9-5/8"	36# J-55	200'	Cement to surface
8-3/4"	7"	23# K-55	3554'	Determined by Caliper Log
6"	4-1/2	10.50J	4350'	5 sx cement

Drill 13-1/2" Surface hole to 200'. Cmt. to surface. Drill 8-3/4" hole to 3554'. Cement thru Ojo Alamo. Run 7" 23# K-55 LTC to TD. Cmt. w/approximate 1000' fill.

Surface to be drilled with 9# mud weight viscosity 45' to 200', from 200' to 50 above Gallup, will be drilled with 14# Mud weight Viscosity. From 50' above Gallup to TD with air mist.

Gary-Williams Oil Producer, Inc. proposes to drill to 4350'.

IN ABOVE SPACE DESCRIBE PROPOSED PROGRAM: If proposal is to deepen or plug back, give data on present productive zone and proposed new productive zone. If proposal is to drill or deepen directionally, give pertinent data on subsurface locations and measured and true vertical depths. Give blowout preventer program, if any.

24.

SIGNED

*Ned Dollar*

TITLE

Agent

DATE

April 30, 1984

(This space for Federal or State office use)

PERMIT NO.

APPROVAL DATE

JUL 06 1984

APPROVED BY

TITLE

DATE

CONDITIONS OF APPROVAL, IF ANY:

*ch 5*

NMOCC

\*See Instructions On Reverse Side

All distances must be from the outer boundaries of the Section.

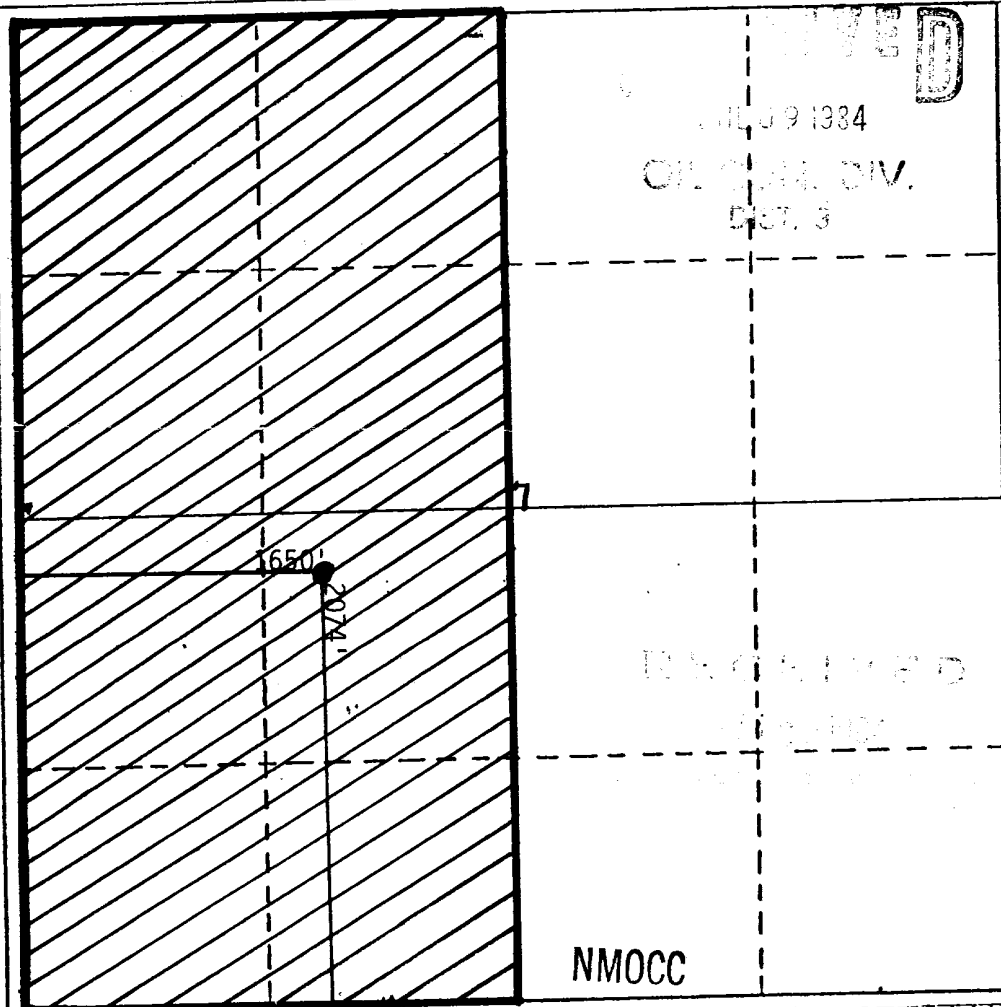
Operator <b>Gary-Williams Oil Producer, Inc.</b>			Lease <b>Johnson 7</b>		Well No. <b>11</b>
Unit Letter <b>K</b>	Section <b>7</b>	Township <b>20N</b>	Range <b>2W</b>	County <b>Sandoval</b>	
Actual Footage Location of Well: <b>1650</b> feet from the <b>West</b> line and <b>2074</b> feet from the <b>South</b> line					
Ground Level Elev.	Producing Formation <b>Mancos</b>	Pool <b>Undesignated Gallup</b>		Dedicated Acreage: <b>W-320</b> Acres	

1. Outline the acreage dedicated to the subject well by colored pencil or hatchure marks on the plat below.
2. If more than one lease is dedicated to the well, outline each and identify the ownership thereof (both as to working interest and royalty).
3. If more than one lease of different ownership is dedicated to the well, have the interests of all owners been consolidated by communitization, unitization, force-pooling, etc?

☐ Yes ☒ No If answer is "yes," type of consolidation \_\_\_\_\_

If answer is "no," list the owners and tract descriptions which have actually been consolidated. (Use reverse side of this form if necessary.) \_\_\_\_\_

No allowable will be assigned to the well until all interests have been consolidated (by communitization, unitization, forced-pooling, or otherwise) or until a non-standard unit, eliminating such interests, has been approved by the Division.



CERTIFICATION

I hereby certify that the information contained herein is true and complete to the best of my knowledge and belief.

*W.P. Marx*

Name  
**W.P. Marx**

Position  
**Operations Manager**

Company  
**Gary-Williams Oil Producer, Inc.**

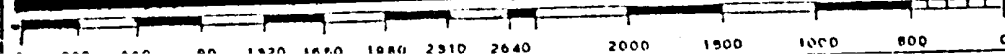
Date  
**5/21/84**

I hereby certify that the well location shown on this plat was plotted from field notes of actual surveys made by me or under my supervision, and that the same is true and correct to the best of my knowledge and belief.

Date Surveyed

Registered Professional Engineer and/or Land Surveyor

Certificate No.



**NEW MEXICO OIL CONSERVATION COMMISSION  
WELL LOCATION AND ACREAGE DEDICATION PLAT**

Form C-102  
Supersedes C-128  
Effective 1-1-65

All distances must be from the outer boundaries of the Section.

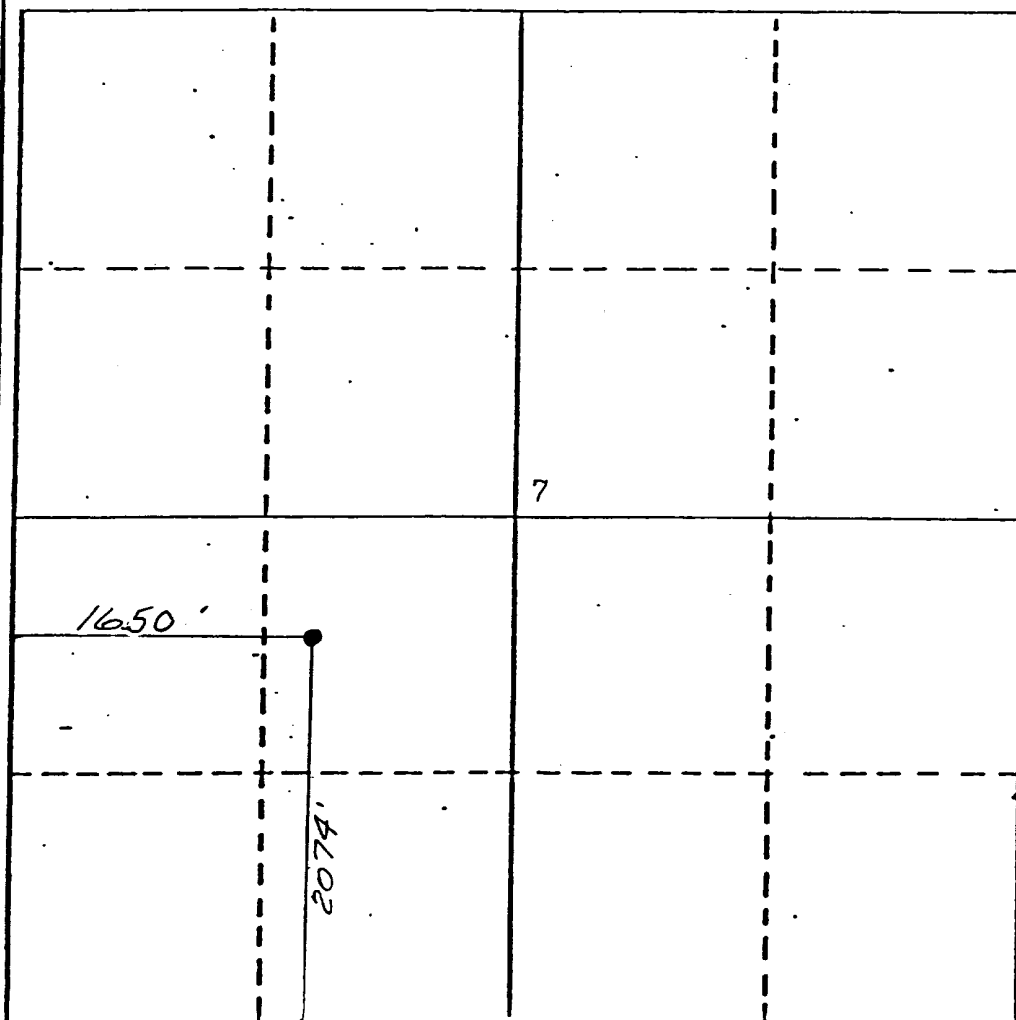
Operator <b>GARY-WILLIAMS OIL PRODUCER, INC.</b>			Lease <b>JOHNSON 7</b>		Well No. <b>11</b>
Unit Letter <b>K</b>	Section <b>7</b>	Township <b>20 NORTH</b>	Range <b>2 WEST</b>	County <b>SANDOVAL</b>	
Actual Footage Location of Well: <div style="display: flex; justify-content: space-between;"> <span><b>2074</b> feet from the <b>SOUTH</b></span> <span>line and <b>1650</b> feet from the <b>WEST</b></span> </div>					
Ground Level Elev. <b>7017</b>	Producing Formation <b>Rio-Puerco Mancos</b>		Pool		Dedicated Acreage: <b>40</b> Acres

1. Outline the acreage dedicated to the subject well by colored pencil or hachure marks on the plat below.
2. If more than one lease is dedicated to the well, outline each and identify the ownership thereof (both as to working interest and royalty).
3. If more than one lease of different ownership is dedicated to the well, have the interests of all owners been consolidated by communitization, unitization, force-pooling, etc?

☐ Yes   ☐ No   If answer is "yes," type of consolidation \_\_\_\_\_

If answer is "no," list the owners and tract descriptions which have actually been consolidated. (Use reverse side of this form if necessary.) \_\_\_\_\_

No allowable will be assigned to the well until all interests have been consolidated (by communitization, unitization, forced-pooling, or otherwise) or until a non-standard unit, eliminating such interests, has been approved by the Commission.



**CERTIFICATION**

*I hereby certify that the information contained herein is true and complete to the best of my knowledge and belief.*

Name  
**Ned Dollar**

Position  
**(Agent)**

Company  
**Gary-Williams Oil Producer**

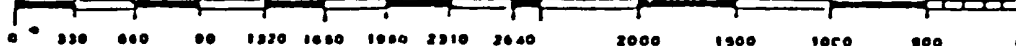
Date  
**May 4, 1984**

*I hereby certify that the well location shown on this plat was plotted from field notes and that the same were made by me or under my supervision, and that the same are true and correct to the best of my knowledge and belief.*

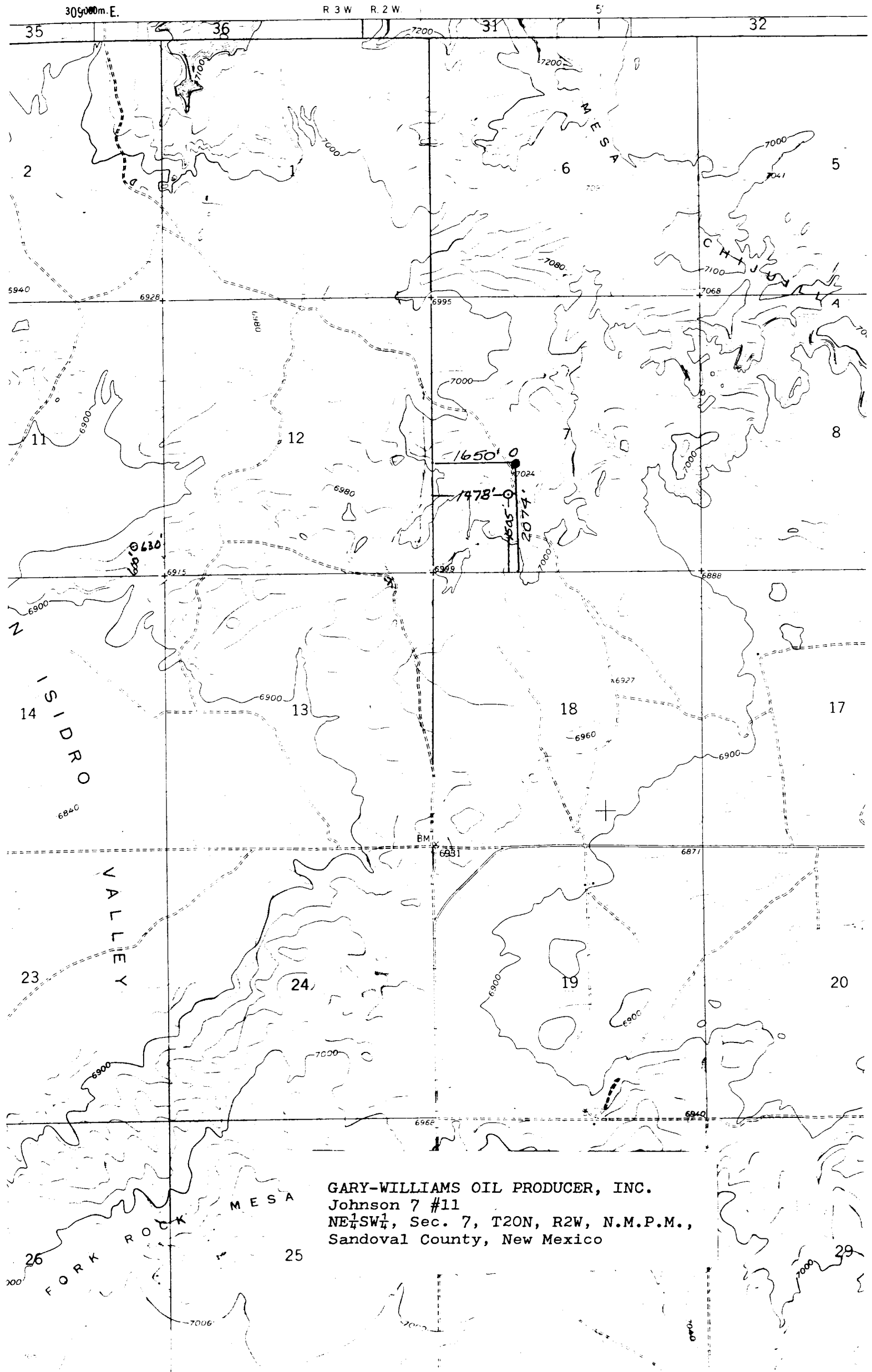
Date Surveyed  
**May 1, 1984**

Registered Professional Engineer  
and/or Land Surveyor

**Michael Daly**  
Certificate No.  
**5992**



UNITED STATES  
DEPARTMENT OF THE INTERIOR  
GEOLOGICAL SURVEY



GARY-WILLIAMS OIL PRODUCER, INC.  
Johnson 7 #11  
NE $\frac{1}{4}$ SW $\frac{1}{4}$ , Sec. 7, T20N, R2W, N.M.P.M.,  
Sandoval County, New Mexico