

UNITED STATES
DEPARTMENT OF THE INTERIOR
BUREAU OF LAND MANAGEMENT

APPLICATION FOR PERMIT TO DRILL, DEEPEN, OR PLUG BACK

1a. TYPE OF WORK

DRILL ☒

DEEPEN ☐

PLUG BACK ☐

b. TYPE OF WELL

OIL
WELL ☒

GAS
WELL ☐

OTHER

SINGLE
ZONE ☐

MULTIPLE
ZONE ☐

2. NAME OF OPERATOR

Diamond Shamrock Corporation c/o Ned Dollar, Agent

3. ADDRESS OF OPERATOR

P. O. Box 399 Aztec, NM 87410

4. LOCATION OF WELL (Report location clearly and in accordance with any State requirements.)*

At surface

2160' FNL & 1930' FWL Section 14, T20N., R4W.

At proposed prod. zone

14. DISTANCE IN MILES AND DIRECTION FROM NEAREST TOWN OR POST OFFICE*

Approximately 16 miles SW of Cuba, NM.

15. DISTANCE FROM PROPOSED*

LOCATION TO NEAREST
PROPERTY OR LEASE LINE, FT.
(Also to nearest drlg. unit line, if any)

16. NO. OF ACRES IN LEASE

160

17. NO. OF ACRES ASSIGNED
TO THIS WELL

40

18. DISTANCE FROM PROPOSED LOCATION*

TO NEAREST WELL, DRILLING COMPLETED,
OR APPLIED FOR, ON THIS LEASE, FT.

19. PROPOSED DEPTH

4700'

20. ROTARY OR CABLE TOOLS

Rotary

21. ELEVATIONS (Show whether DF, RT, GR, etc.)

6871' GR

DRILLING OPERATIONS AUTHORIZED ARE

SUBJECT TO COMPLIANCE WITH ATTACHED

"GENERAL REQUIREMENTS CEMENTING PROGRAM"

22. APPROX. DATE WORK WILL START*

April 30, 1985
This action is subject to administrative
appeal pursuant to 30 CFR 290.

23.

SIZE OF HOLE	SIZE OF CASING	WEIGHT PER FOOT	SETTING DEPTH	QUANTITY OF CEMENT
13-1/2"	9-5/8"	36# K-55	500'	Cement to surface
8-3/4"	7"	23#	3250'	Determined by Caliper Log
6"	4-1/2"	11.6# K-55	TD (1650')	5 sx cement

Drill 13-1/2" surface hole to 500'. Cmt. to surface. Well to be drilled with 9# mud weight. From casing point to TD with air-mist.

RECEIVED

RECEIVED

MAY 29 1985

OIL CON. DIV.
DIST. 3

IN ABOVE SPACE DESCRIBE PROPOSED PROGRAM: If proposal is to deepen or plug back, give data on present productive zone and proposed new productive zone. If proposal is to drill or deepen directionally, give pertinent data on subsurface locations and measured and true vertical depths. Give blowout preventer program, if any.

24.

SIGNED

TITLE Agent

DATE March 21, 1985

(This space for Federal or State office use)

PERMIT NO.

APPROVAL DATE

APPROVED
AS AMENDED

APPROVED BY

TITLE

DATE MAY 28 1985

CONDITIONS OF APPROVAL, IF ANY:

John D. Keller
FOR M. MILLENBACH
AREA MANAGER

NMOCC

*See Instructions On Reverse Side

Respu-
tions on an

Office: 17

OIL CONSERVATION DIVISION

P. O. BOX 2088

SANTA FE, NEW MEXICO 87501

Form C-107
Revised 10-1

MEXICO
MINERALS DEPARTMENT

All distances must be from the outer boundaries of the Section.

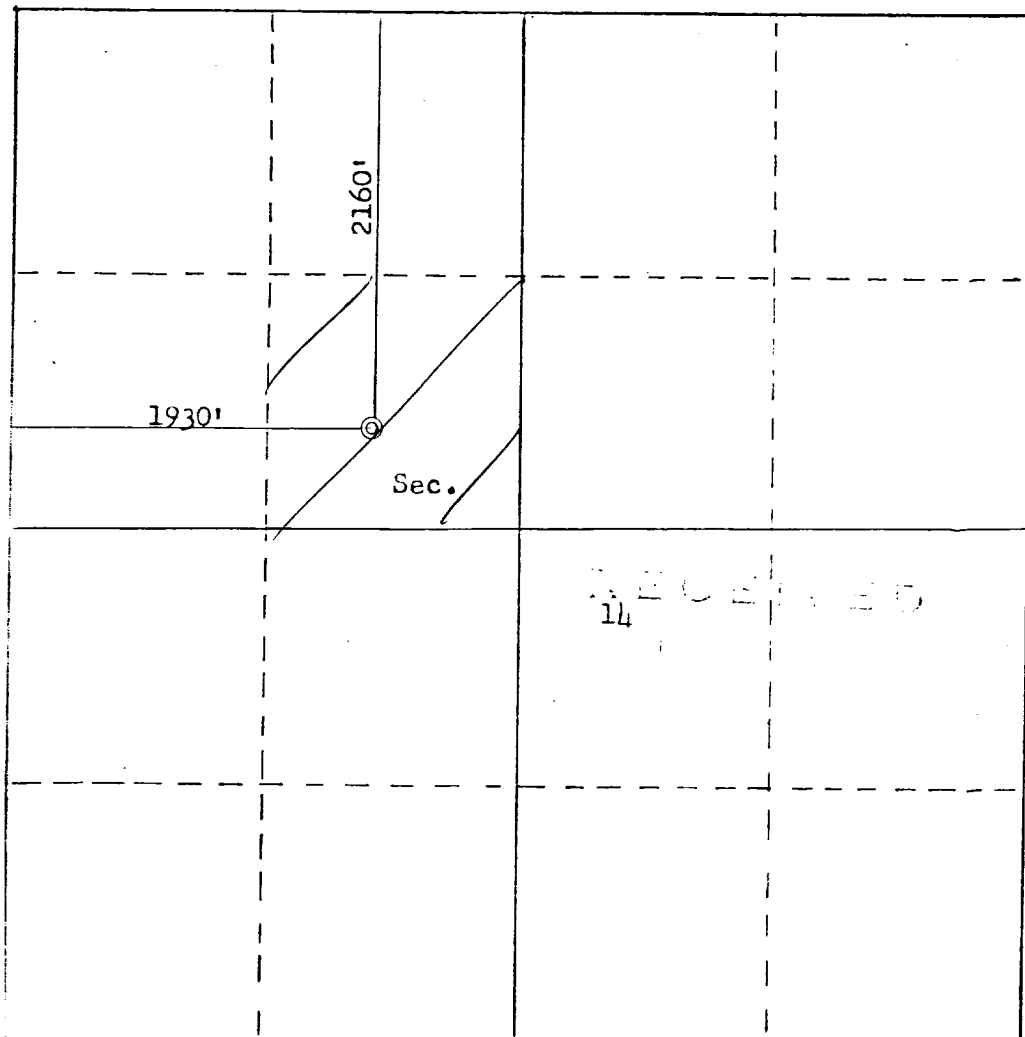
Operator DIAMOND SHAMROCK EXPLORATION CO.			Lease PENISTAJA		Well No. 22-14
Unit Letter F	Section 14	Township 20N	Range 4W	County Sandoval	
Actual Footage Location of Well: 2160 feet from the North line and 1930 feet from the West line					
Ground Level Elev. 6871	Producing Formation Gallup		Pool W.C.	Dedicated Acreage: 40 Acres	

1. Outline the acreage dedicated to the subject well by colored pencil or hachure marks on the plat below.
2. If more than one lease is dedicated to the well, outline each and identify the ownership thereof (both as to working interest and royalty).
3. If more than one lease of different ownership is dedicated to the well, have the interests of all owners been consolidated by communitization, unitization, force-pooling, etc?

☐ Yes ☒ No If answer is "yes," type of consolidation _____

If answer is "no," list the owners and tract descriptions which have actually been consolidated. (Use reverse side of this form if necessary.) _____

No allowable will be assigned to the well until all interests have been consolidated (by communitization, unitization, forced-pooling, or otherwise) or until a non-standard unit, eliminating such interests, has been approved by the Commission.



CERTIFICATION

I hereby certify that the information contained herein is true and complete to the best of my knowledge and belief.

Ned Dollar

Name

Ned Dollar

Position

Agent

Company

Diamond Shamrock Corp.

Date

March 21, 1985

I hereby certify that the well location shown on this plat was plotted from field notes of actual surveys made by me or under my supervision, and that the same is true and correct to the best of my knowledge and belief.

Date Surveyed

March 21, 1985

Registered Professional Engineer
and Land Surveyor of New Mexico

Fred B. Kerr, Jr.

Certificate No.

2950

KERR, JR.

Scale: 1"=1000'