

UNITED STATES
DEPARTMENT OF THE INTERIOR
BUREAU OF LAND MANAGEMENT

APPLICATION FOR PERMIT TO DRILL, DEEPEN, OR PLUG BACK

1a. TYPE OF WORK
DRILL ☒ DEEPEN ☐ PLUG BACK ☐
b. TYPE OF WELL
OIL WELL ☒ GAS WELL ☐ OTHER ☐ SINGLE ZONE ☒ MULTIPLE ZONE ☐
2. NAME OF OPERATOR
Merrion Oil & Gas Corporation
3. ADDRESS OF OPERATOR
P. O. Box 840, Farmington, New Mexico 87499
4. LOCATION OF WELL (Report location clearly and in accordance with any State requirements.)
At surface 2000' FNL and 1650' FEL
At proposed prod. zone Same

5. LEASE DESIGNATION AND SERIAL NO.
NM 25815
6. IF INDIAN, ALLOTTEE OR TRIBE NAME
7. UNIT AGREEMENT NAME
8. FARM OR LEASE NAME
Seattle Slew
9. WELL NO.
1
10. FIELD AND POOL, OR WILDCAT
WC Mesaverde
11. SEC., T., R., M., OR BLK.
AND SURVEY OR AREA
G
Sec. 15, T21N, R7W
12. COUNTY OR PARISH
Sandoval
13. STATE
New Mexico

14. DISTANCE IN MILES AND DIRECTION FROM NEAREST TOWN OR POST OFFICE TO PROPOSED WELL
13 miles Southwest of Counselor, New Mexico

15. DISTANCE FROM PROPOSED* LOCATION TO NEAREST PROPERTY OR LEASE LINE, FT. (Also to nearest drig. unit line, if any) 1650'
16. NO. OF ACRES IN LEASE 1280
17. NO. OF ACRES ASSIGNED TO THIS WELL 40
18. DISTANCE FROM PROPOSED LOCATION* TO NEAREST WELL, DRILLING, COMPLETED, OR APPLIED FOR, ON THIS LEASE, FT. N/A
19. PROPOSED DEPTH 3300
20. ROTARY OR CABLE TOOLS Rotary
21. ELEVATIONS (Show whether DF, RT, GR, etc.)
6788' GL
22. APPROX. DATE WORK WILL START*
Before July 31, 1985

23. "GENERAL REQUIREMENTS" PROPOSED CASING AND CEMENTING PROGRAM
This action is subject to technical and procedural review pursuant to 43 CFR 3165.3 and appeal pursuant to 43 CFR 3165.4.

SIZE OF HOLE	SIZE OF CASING	WEIGHT PER FOOT	SETTING DEPTH	
12-1/4"	8-5/8"; J-55	24 #/ft.	100'	80 sx Class B 2% CaCl2 (94.4)
6-3/4"	4-1/2", J-55	10.5 #/ft.	3300'	200 sx Class B 2% D-79 (412)
	See Below			100 sx Class H 2% gel (122)

Propose to drill 12-1/4" holes to 100 ft. Will set 100 ft. of 8-5/8", 23 #/ft, J-55 surface casing with 80 sx Class B 2% CaCl2 (94.4 cu. ft.). Wait on cement 10 hours. Nipple up BOPs and pressure test to 600 PSI prior to drill out. Drill 6-3/4" hole size from under surface to TD. No unusual problems anticipated. Will run open hole logs. If well appears productive will run 4-1/2", 10.5 #/ft, J-55 casing to TD and single stage cement with 200 sx Class B 2% D-79 (412 cu. ft.) followed by 100 sx Class H 2% gel (122 cu. ft.) Estimated top of cement - surface. Will perforate and stimulate the Mesaverde as necessary.

Drilling circulating medium will be low solids, non-dispersed, low water loss mud using bentonite, starch, CMC and fresh water.

Minimum specifications for pressure control is 8", 600 series bag type blow out preventer.

IN ABOVE SPACE DESCRIBE PROPOSED PROGRAM: If proposal is to deepen or plug back, give data on present productive zone and proposed new productive zone. If proposal is to drill or deepen directionally, give pertinent data on subsurface locations and measured and true vertical depths. Give blowout preventer program, if any.

24. SIGNED [Signature] Operations Manager
(This space for Federal or State official use)
PERMIT NO. APPROVAL DATE JUL 23 1985
APPROVED BY [Signature] TITLE OIL CON. DIV. DIST. 3
CONDITIONS OF APPROVAL, IF ANY:
APPROVED AS AMENDED
JUL 24 1985
JUL 23 1985
(SGD.) MAT MILLENBACH
M. MILLENBACH
AREA MANAGER

NMOCC
*See Instructions On Reverse Side

**NEW MEXICO OIL CONSERVATION COMMISSION
WELL LOCATION AND ACREAGE DEDICATION PLAT**

Form C-102
Supersedes C-128
Effective 1-1-65

All distances must be from the outer boundaries of the Section.

Operator MERRION OIL & GAS CORPORATION			Lease Seattle Slew		Well No. 1
Unit Letter G	Section 15	Township 21N	Range 7W	County Sandoval	
Actual Footage Location of Well:					
2000 feet from the North line and		1650 feet from the East line			
Ground Level Elev. 6788	Producing Formation Mesaverde	Pool WC Mesaverde	Dedicated Acreage 40 Acres		

1. Outline the acreage dedicated to the subject well by colored pencil or hachure marks on the plat below.
2. If more than one lease is dedicated to the well, outline each and identify the ownership thereof (both as to working interest and royalty).
3. If more than one lease of different ownership is dedicated to the well, have the interests of all owners been consolidated by communitization, unitization, force-pooling, etc?

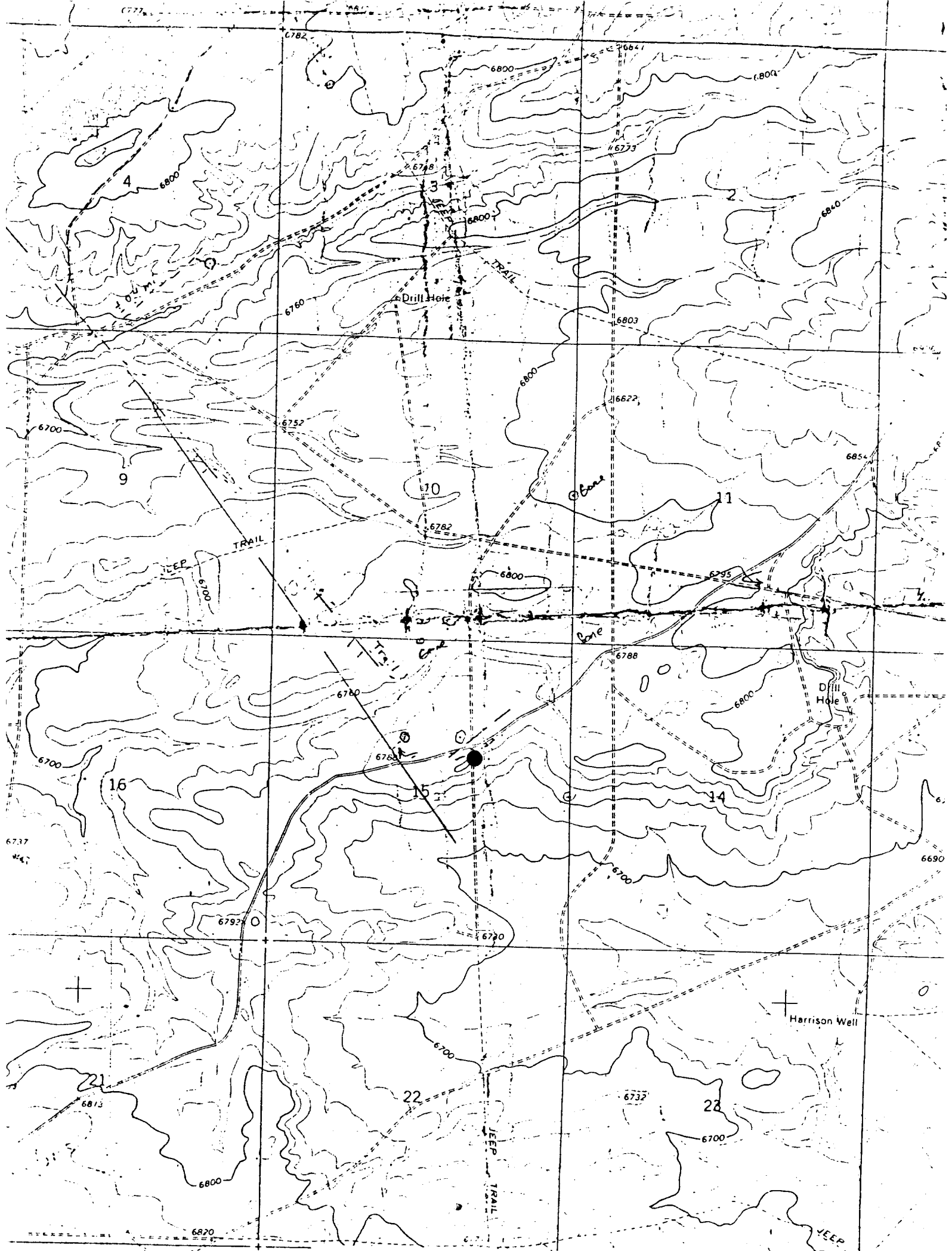
☐ Yes ☐ No If answer is "yes," type of consolidation _____

If answer is "no," list the owners and tract descriptions which have actually been consolidated. (Use reverse side of this form if necessary.) _____

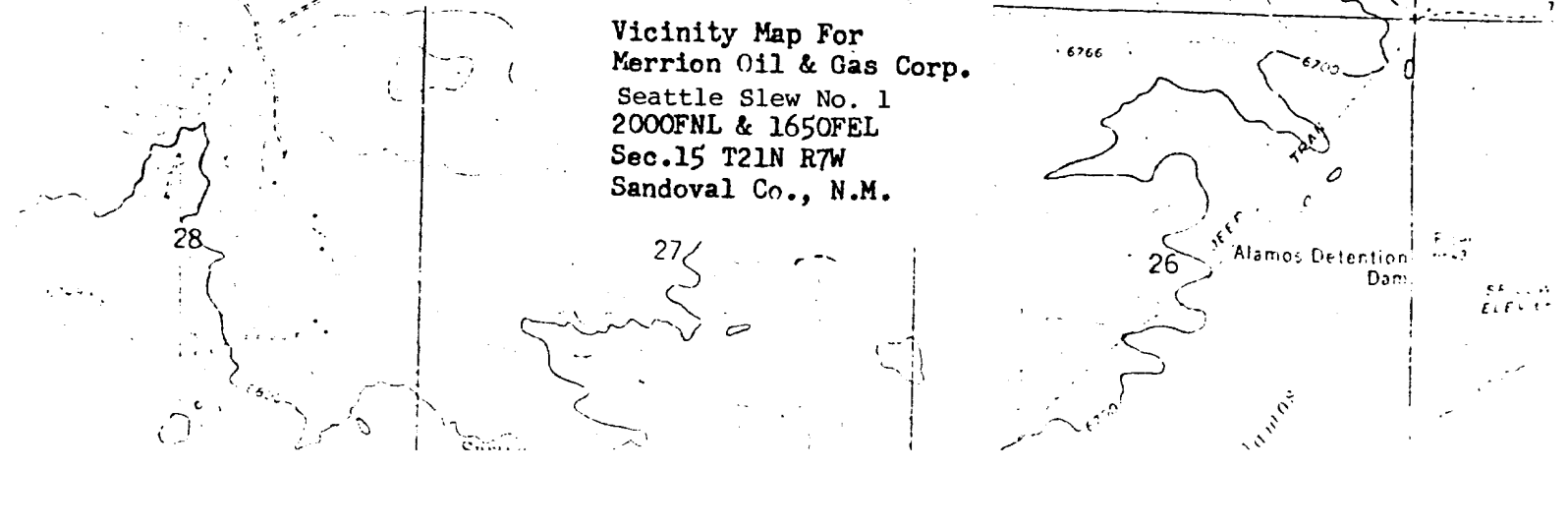
No allowable will be assigned to the well until all interests have been consolidated (by communitization, unitization, forced-pooling, or otherwise) or until a non-standard unit, eliminating such interests, has been approved by the Commission.

<p>Sec.</p>	<p>15</p>	<p>NM 25815</p>
<p>RECEIVED JUL 24 1985 OIL CON. DIV. DIST. 3</p>		
<p>RECEIVED JUL 11 1985 BUREAU OF LAND MANAGEMENT FARMINGTON RESOURCE AREA</p>		

CERTIFICATION	
<p>I hereby certify that the information contained herein is true and complete to the best of my knowledge and belief.</p>	
<p><i>Steve S. Dunn</i></p>	
Name	Steve S. Dunn
Position	Operations Manager
Company	Merrion Oil & Gas Corporation
Date	7/10/85
<p>I hereby certify that the well location shown on this plat was plotted from field notes of actual surveys made by me or under my supervision, and that the same is true and correct to the best of my knowledge and belief.</p>	
Date Surveyed	7/10/85
Registered Professional Engineer and Land Surveyor	<p>WILLIAM E. MAHAKEN 14846</p>
Certificate No.	14846



Vicinity Map For
Merrion Oil & Gas Corp.
Seattle Slew No. 1
2000FNL & 1650FEL
Sec. 15 T21N R7W
Sandoval Co., N.M.



SUNDRY NOTICES AND REPORTS ON WELLS

1. oil well ☒ gas well ☐ other ☐

2. NAME OF OPERATOR
Merrion Oil & Gas Corporation

3. ADDRESS OF OPERATOR
P. O. Box 840, Farmington, New Mexico 87499

4. LOCATION OF WELL (REPORT LOCATION CLEARLY. See space 17 below.)

AT TOP PROD. INTERVAL: Same

AT TOTAL DEPTH: Same

16. CHECK APPROPRIATE BOX TO INDICATE NATURE OF NOTICE, REPORT, OR OTHER DATA

REQUEST FOR APPROVAL TO:

SUBSEQUENT REPORT OF:

TEST WATER SHUT-OFF

FRACTURE TREAT

SHOOT OR ACIDIZE

REPAIR WELL

PULL OR ALTER CASING

MULTIPLE COMPLETE

CHANGE ZONES

ABANDON ♦

(other) Change of plans - casing sizes

RECEIVED
JUL 25 1965
BUREAU OF
FOREIGN AFFAIRS

SL 25 1985
BUREAU OF LAND MANAGEMENT
FIREWATER RESCUE
S

(NOTE: Report results of immediate completion of zone change on Form 9-330.)

17. DESCRIBE PROPOSED OR COMPLETED OPERATIONS (Clearly state all pertinent details, and give pertinent dates, including estimated date of starting any proposed work. If well is directionally drilled, give subsurface locations and measured and true vertical depths for all markers and zones pertinent to this work).^a

Propose to set 8-5/8", J-55, 24 #/ft. surface casing to 120' cement with 90 sx
Class B 2% CaCl2 (106.2 cu. ft.)

Propose to run 5-1/2", 15.5 #/ft. J-55 production casing and cement accordingly.

Subsurface Safety Valve: Manu. and Type

18. I hereby certify that the foregoing is true and correct

SIGNED A. A. 126 TITLE Operations Manager DATE 12/1/68

(This space for Federal or State office use) :

APPROVED BY _____ TITLE _____ DATE _____

CONDITIONS OF APPROVAL, IF ANY:

***See Instructions on Reverse Side**

NMOG