

UNITED STATES
DEPARTMENT OF THE INTERIOR
BUREAU OF LAND MANAGEMENT

APPLICATION FOR PERMIT TO DRILL, DEEPEN, OR PLUG BACK

1a. TYPE OF WORK

DRILL ☒

DEEPEN ☐

PLUG BACK ☐

b. TYPE OF WELL

OIL
WELL ☒

GAS
WELL ☐

OTHER

Comingled

SINGLE
ZONE ☐

MULTIPLE
ZONE ☒

2. NAME OF OPERATOR

W. B. Martin & Associates

3. ADDRESS OF OPERATOR

709 N. Butler Farmington, N.M.

4. LOCATION OF WELL (Report location clearly and in accordance with any State requirements.)*
At surface

At proposed prod. zone

1850' FSL and 1770' FWL

RECEIVED

14. DISTANCE IN MILES AND DIRECTION FROM NEAREST TOWN OR POST OFFICE*

17 Miles NW of Cuba, N.M.

MAR 18 1985

15. DISTANCE FROM PROPOSED*

LOCATION TO NEAREST
PROPERTY OR LEASE LINE, FT.
(Also to nearest drig. unit line, if any)

1850'

2560'

18. DISTANCE FROM PROPOSED LOCATION*

TO NEAREST WELL, DRILLING, COMPLETED,
OR APPLIED FOR, ON THIS LEASE, FT.

2500'

19. PROPOSED DEPTH

6940'

17. NO. OF ACRES ASSIGNED
TO THIS WELL

40

20. ROTARY OR CABLE TOOLS

Rotary

21. ELEVATIONS (Show whether DF, RT, GR, etc.)
DRILLING OPERATIONS AUTHORIZED ARE
SUBJECT TO COMPLIANCE WITH ATTACHED
"GENERAL REQUIREMENTS".

6981' GR

22. APPROX. DATE WORK WILL START*

Dependant upon approval

PROPOSED CASING AND CEMENTING PROGRAM

This action is subject to administrative
appeal pursuant to 30 CFR 290.

SIZE OF HOLE	SIZE OF CASING	WEIGHT PER FOOT	SETTING DEPTH	
12 1/4"	9 5/8"	32#	250'	206.50 ft ³
8 3/4"	7"	23#	5000'	1200.00 ft ³
6 1/4"	4 1/2"	11.6#	6940'	325.00 ft ³

PROPOSED OPERATIONS

1. Drill 12 1/4" hole 250' with spud mud. Run and cement 9 5/8" casing. WCC 12 hours. Pressure test BOP to 1000 PSI.
2. Drill 8 3/4" hole to 5000' with low solids, low water loss mud. Run and cement 7" casing. WCC 12 hours. Pressure test BOP to 1000 PSI.
3. Drill 6 1/4" hole to 6940' with air. Run and cement 4 1/2" casing.

IN ABOVE SPACE DESCRIBE PROPOSED PROGRAM: If proposal is to deepen or plug back, give data on present productive zone and proposed new productive zone. If proposal is to drill or deepen directionally, give pertinent data on subsurface locations and measured and true vertical depths. Give blowout preventer program, if any.

24.

SIGNED

W. B. Martin

Operator

(This space for Federal or State of)

RECEIVED

PERMIT NO.

AUG 28 1985

APPROVAL DATE

APPROVED BY

CONDITIONS OF APPROVAL, IF ANY:

OIL CON. DIV
DIST

NMOCC

*See Instructions On Reverse Side

DATE 3/8/85

APPROVED
AS AMENDED

AUG 23 1985

DATE 8/1/85 J. Stan McKee

M. MILLENBACH
AREA MANAGER

**NEW MEXICO OIL CONSERVATION COMMISSION
WELL LOCATION AND ACREAGE DEDICATION PLAT**

Form C-102
Supersedes C-128
Effective 1-1-65

All distances must be from the outer boundaries of the Section.

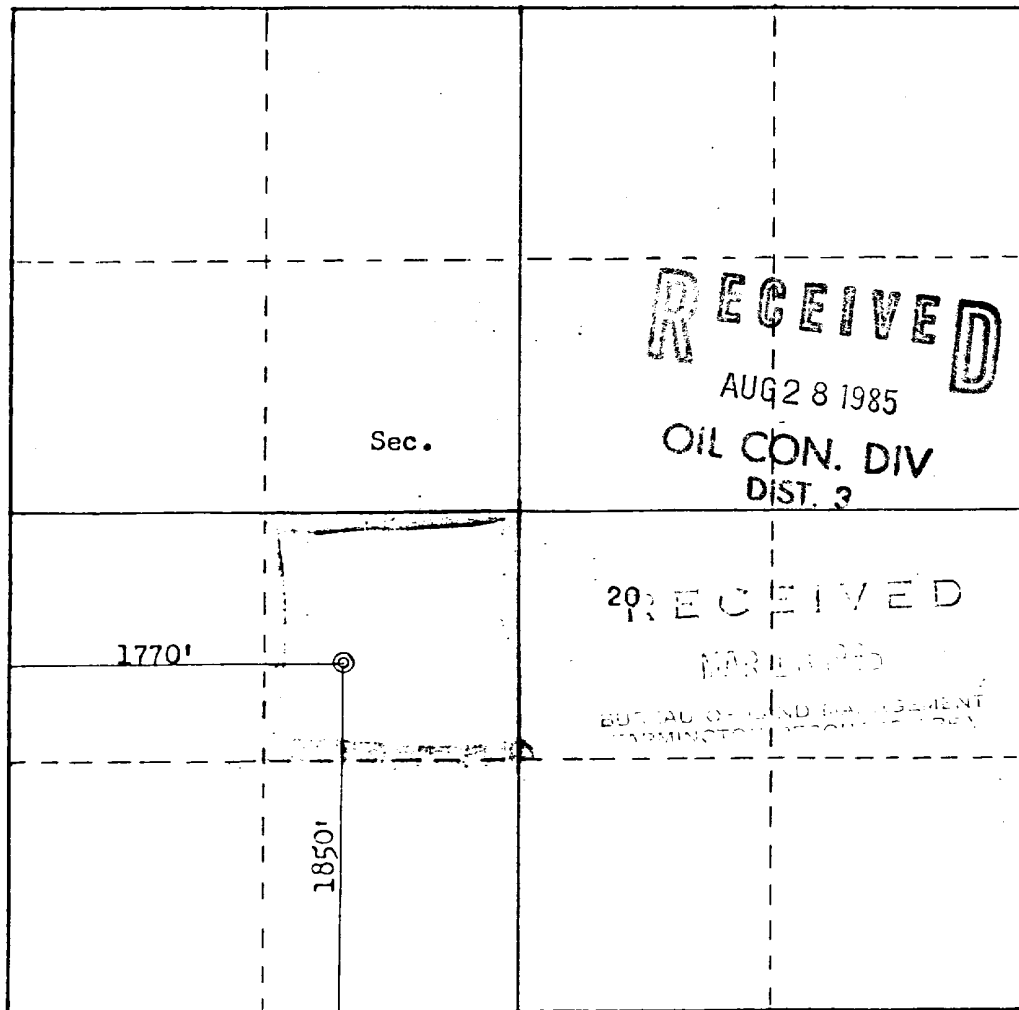
Operator W. B. MARTIN & ASSOCIATES			Lease MARTIN-WHITAKER		Well No. 71
Unit Letter K	Section 20	Township 23N	Range 4W	County Sandoval	
Actual Footage Location of Well: 1850 feet from the South line and 1770 feet from the West line					
Ground Level Elev: 6981	Producing Formation Gallup-Dakota	Pool S. Lindrith Gallup-Dakota		Dedicated Acreage: 40 Acres	

1. Outline the acreage dedicated to the subject well by colored pencil or hachure marks on the plat below.
2. If more than one lease is dedicated to the well, outline each and identify the ownership thereof (both as to working interest and royalty).
3. If more than one lease of different ownership is dedicated to the well, have the interests of all owners been consolidated by communitization, unitization, force-pooling, etc?

☐ Yes ☐ No If answer is "yes," type of consolidation _____

If answer is "no," list the owners and tract descriptions which have actually been consolidated. (Use reverse side of this form if necessary.) _____

No allowable will be assigned to the well until all interests have been consolidated (by communitization, unitization, forced-pooling, or otherwise) or until a non-standard unit, eliminating such interests, has been approved by the Commission.



Scale: 1"=1000'

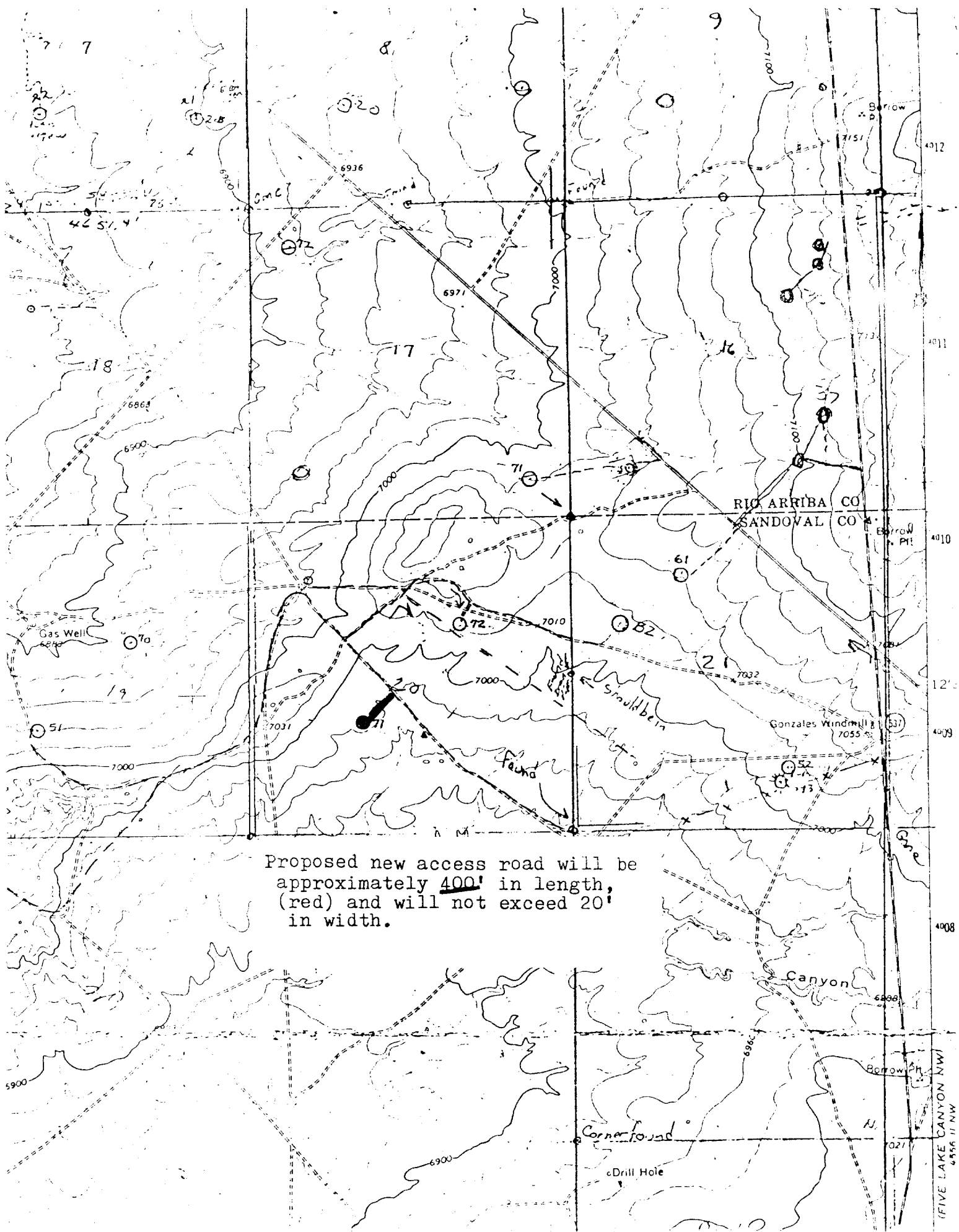
CERTIFICATION

I hereby certify that the information contained herein is true and complete to the best of my knowledge and belief.

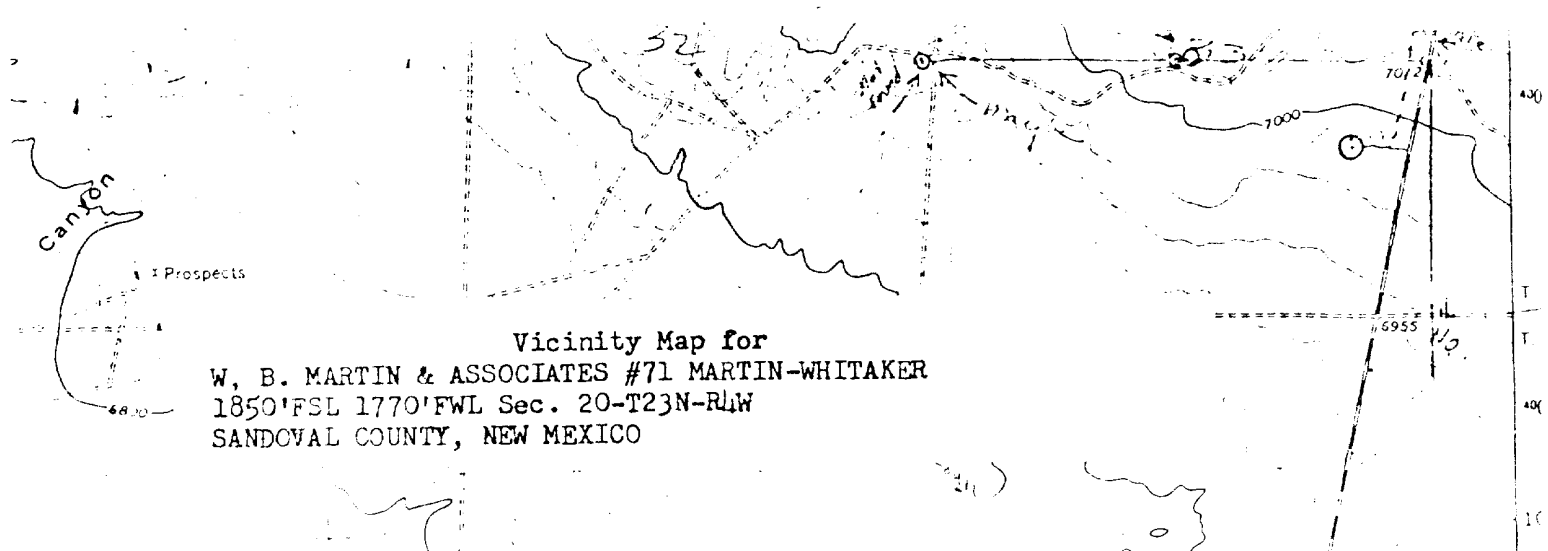
Name
W.B. Martin Jr.
Position
President
Company
W. B. Martin & Associates
Date
3/8/85

I hereby certify that the well location shown on this plat was plotted from field notes of actual surveys made by me or under my supervision, and that the same is true and correct to the best of my knowledge and belief.

Date Surveyed
March 8, 1985
Registered Professional Engineer and Land Surveyor
Fred B. Kerr Jr.
Fred B. Kerr Jr.
Certificate No. **3950**



Proposed new access road will be approximately 400' in length, (red) and will not exceed 20' in width.



Vicinity Map for
W. B. MARTIN & ASSOCIATES #71 MARTIN-WHITAKER
1850' FSL 1770' FWL Sec. 20-T23N-R4W
SANDOVAL COUNTY, NEW MEXICO