

UNITED STATES
DEPARTMENT OF THE INTERIOR
BUREAU OF LAND MANAGEMENT

RECEIVED

Budget Bureau No. 1004-0136

Expires August 31, 1985

30-043-20858

5. LEASE DESIGNATION AND SERIAL NO.

NM 54364 83499

APPLICATION FOR PERMIT TO DRILL, DEEPEN, OR PLUG BACK

1a. TYPE OF WORK

DRILL

☒

DEEPEN

☐

PLUG BACK

☐

NOV 21 1985

b. TYPE OF WELL

OIL

GAS

SINGLE

MULTIPLE

WELL

☒

WELL

☐

OTHER

ZONE

☒

ZONE

☐

c. Name of Operator

Bannon Energy, Inc. c/o Daggett & Chenault, Inc.

3. ADDRESS OF OPERATOR

3935 E. 30th, Ste. 7B, Farmington, NM

4. LOCATION OF WELL (Report location clearly and in accordance with any State Requirements.)*

At surface

947 FNL, 717' FEL, Unit A, Section 30, T23N-R6W

At proposed prod. zone

Same

14. DISTANCE IN MILES AND DIRECTION FROM NEAREST TOWN OR POST OFFICE*

Approximately 4 miles Southeast of Lybrook, NM

15. DISTANCE FROM PROPOSED*

LOCATION TO NEAREST
PROPERTY OR LEASE LINE FT.

(Also to nearest drlg. unit line, if any)

717'

16. NO. OF ACRES IN LEASE

640

18. DISTANCE FROM PROPOSED LOCATION*

TO NEAREST WELL, DRILLING, COMPLETED,
OR APPLIED FOR, ON THIS LEASE, FT.

None

19. PROPOSED DEPTH

5800'

21. ELEVATIONS (Show whether DF, RT, GR, etc.)

7069' GR

22. APPROX. DATE WORK WILL START*

7-15-91

23. PROPOSED CASING AND CEMENTING PROGRAM

SIZE OF HOLE	SIZE OF CASING	WEIGHT PER FOOT	SETTING DEPTH	QUANTITY OF CEMENT
12-1/4"	8-5/8"	24.0 lb. J-55	300'	Cement to Surface
7-7/8"	4-1/2"	11.6 lb. K-55	5800'	800 sx-volume to be calculated subsequent to logging and circulated to surface

Well to be drilled to penetrate the Gallup formation. All producing intervals in the Gallup will be stimulated as necessary.

EXHIBITS:

- "A" Location and Elevation Plat
- "B" Ten Point Drilling Program
- "C" Blowout Preventer Diagram
- "D" Multi-Point Requirements of APD
- "E" Site Specific Checklist for Roads
(Attachment to "E" - Topo Map)

- "F" Drill Rig Layout
- "G" Completion Program Layout
- "H" Location Profile

The gas from this lease is committed.

IN ABOVE SPACE DESCRIBE PROPOSED PROGRAM: If proposal is to deepen or plug back, give data on present productive zone and proposed new productive zone. If proposal is to drill or deepen directionally, give pertinent data on subsurface locations and measured and true vertical depths. Give blowout preventer program, if any.

24.

SIGNED

Ralehaband

TITLE

V.P. Operations

DATE

05/29/91

(This space for Federal or State office use)

PERMIT NO.

APPROVAL DATE

APPROVED BY

TITLE

CONDITIONS OF APPROVAL, IF ANY:

Title 18 U.S.C. Section 1001, makes it a crime for any person knowingly and willfully to make to any department or agency of the United States any false, fictitious or fraudulent statements or representations as to any matter within its jurisdiction.

NMOCO

APPROVED
AS AMENDED

JUL 1 1991

AREA MANAGER

RECEIVED
JUL 15 1991
OIL CON. DIST. 3

Submit to Appropriate
District Office
State Lease - 4 copies
Fee Lease - 3 copies

State of New Mexico
Energy, Minerals and Natural Resources Department

Form C-102
Revised 1-1-89

OIL CONSERVATION DIVISION

P.O. Box 2088
Santa Fe, New Mexico 87504-2088

DISTRICT I
P.O. Box 1930, Hobbs, NM 88240

DISTRICT II
P.O. Drawer DD, Artesia, NM 88210

DISTRICT III
1300 Rio Brazos Rd., Aztec, NM 87410

WELL LOCATION AND ACREAGE DEDICATION PLAT

All Distances must be from the outer boundaries of the section

Operator BANNON ENERGY, INC.		Lease FEDERAL SOUTH 30		Well No. 30-2
Unit Letter A	Section 30	Township T.23 N.	Range R.6 W.	County SANDOVAL COUNTY
Actual Footage Location of Well: 947 feet from the NORTH line and 717 feet from the EAST line				
Ground level Elev. 7069	Producing Formation Gallup	Pool Lybrook/Gallup		Dedicated Acreage: 40 Acres

1. Outline the acreage dedicated to the subject well by colored pencil or hatchure marks on the plat below.

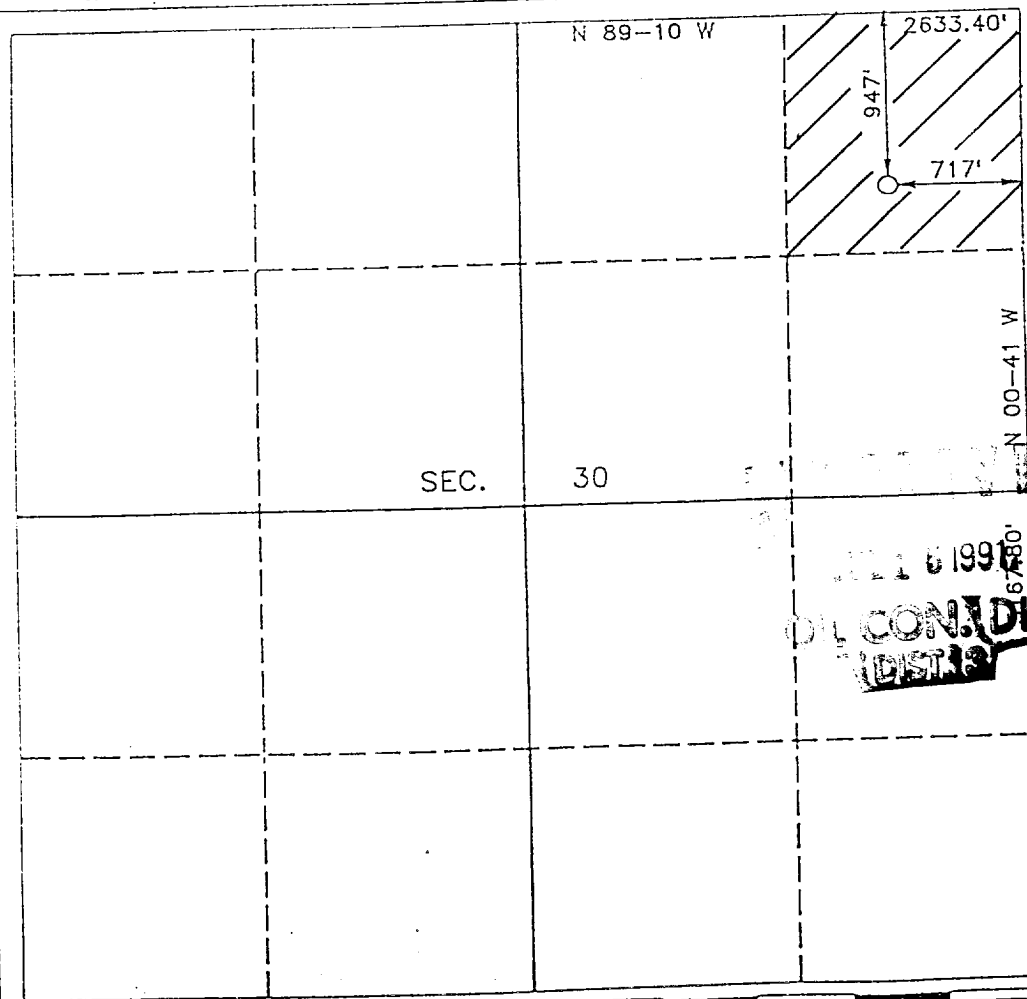
2. If more than one lease is dedicated to the well, outline each and identify the ownership thereof (both as to working interest and royalty).

3. If more than one lease of different ownership is dedicated to the well, have the interest of all owners been consolidated by communitization, unitization, force-pooling, etc.?

☐ Yes ☐ No If answer is "yes" type of consolidation

If answer is "no" list the owners and tract descriptions which have actually been consolidated. (Use reverse side of this form if necessary).

No allowable will be assigned to the well until all interests have been consolidated (by communitization, unitization, forced-pooling, or otherwise) or until a non-standard unit, eliminating such interest, has been approved by the Division.



OPERATOR CERTIFICATION

I hereby certify that the information contained herein is true and complete to the best of my knowledge and belief.

Signature *R. A. Chabaud*
Printed Name **R. A. Chabaud**
Position **V. P. Operations**
Company **Bannon Energy Inc.**
Date

SURVEYOR CERTIFICATION

I hereby certify that the well location shown on this plat was plotted from field notes of actual surveys made by me or under my supervision, and that the same is true and correct to the best of my knowledge and belief.

Date Surveyed **MAY 13 1991**
Signature *Henry Broadhurst, Jr.*
Professional Surveyor
NEW MEXICO
REGISTERED PROFESSIONAL SURVEYOR
No. **11393**

T - 23 - N




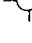





RIO ARRIBA CO
SANDOVAL CO

RECEIVED
JUL 5 1991
OIL CON. DIV N
DIST. 3

18" Culverts

BANNON ENERGY INC.

Federal South 30-2
NE 1/4 Section 30, T23N - R6W
Sandoval County, NM

-  Staked Location
-  Proposed New Well
-  Producing Wells
-  Plugged or Abandoned Wells
-  Drilling Well
-  Water wells
-  Reservoirs
-  Existing Road
-  Proposed New Access Road