

UNITED STATES
DEPARTMENT OF THE INTERIOR
BUREAU OF LAND MANAGEMENT

APPLICATION FOR PERMIT TO DRILL OR DEEPEN

1a. TYPE OF WORK DRILL <input checked="" type="checkbox"/> DEEPEN <input type="checkbox"/>		5. LEASE DESIGNATION AND SERIAL NO. NM-97830	
b. TYPE OF WELL OIL WELL <input checked="" type="checkbox"/> GAS WELL <input type="checkbox"/> OTHER <input type="checkbox"/> SINGLE ZONE <input type="checkbox"/> MULTIPLE ZONE <input checked="" type="checkbox"/>		6. IF INDIAN, ALLOTTEE OR TRIBE NAME	
2. NAME OF OPERATOR Cobb Resources Corporation 163721		7. UNIT AGREEMENT NAME	
3. ADDRESS AND TELEPHONE NO. 1019 Daskalos Dr. NE Albuq. NM 87123 505-293-0451		8. FARM OR LEASE NAME, WELL NO. 21035 Cobb Resources #1	
4. LOCATION OF WELL (Report location clearly and in accordance with any State requirements.)* At surface 2240' FNL & 1110' FEL Section 22, T18N, R3W At proposed prod. zone Same as above at the top of the Point Lookout.		9. API WELL NO. 3-043-20943	
14. DISTANCE IN MILES AND DIRECTION FROM NEAREST TOWN OR POST OFFICE* 3 miles south east of Torreon Navajo Mission		10. FIELD AND POOL, OR WILDCAT SAH LUTS MESA VERDE WILDCAT 53620 EXT	
15. DISTANCE FROM PROPOSED* LOCATION TO NEAREST PROPERTY OR LEASE LINE, FT. (Also to nearest drlg. unit line, if any) 1110'		11. SEC., T., R., M., OR BLK. AND SURVEY OR AREA HS 22, T18N, R3W	
16. NO. OF ACRES IN LEASE 1440		12. COUNTY OR PARISH Sandoval	
17. NO. OF ACRES ASSIGNED TO THIS WELL 40		13. STATE NM	
18. DISTANCE FROM PROPOSED LOCATION* TO NEAREST WELL, DRILLING, COMPLETED, OR APPLIED FOR, ON THIS LEASE, FT. 4650'		19. PROPOSED DEPTH 1050'	
20. ROTARY OR CABLE TOOLS Rotary		21. APPROX. DATE WORK WILL START* 06-18-97	
22. ELEVATIONS (Show whether DF, RT, GR, etc.) 6596' GR		23. PROPOSED CASING AND CEMENTING PROGRAM	

SIZE OF HOLE	GRADE, SIZE OF CASING	WEIGHT PER FOOT	SETTING DEPTH	QUANTITY OF CEMENT
11"	8 5/8" J-55	24 #	90' / 120	35 sks
7 7/8"	4 1/2" J-55	10.5#	1050'	200 sks

RECEIVED
JUN 25 1997OIL CON. DIV.
DIST. 3

IN ABOVE SPACE DESCRIBE PROPOSED PROGRAM: If proposal is to deepen, give data on present productive zone and proposed new productive zone. If proposal is to drill or deepen directionally, give pertinent data on subsurface locations and measured and true vertical depths. Give blowout preventer program, if any.

24. SIGNER Frank A. Welby TITLE Vice President DATE 5/5/97

(This space for Federal or State office use)

PERMIT NO. _____ APPROVAL DATE _____

Application approval does not warrant or certify that the applicant holds legal or equitable title to those rights in the subject lease which would entitle the applicant to conduct operations thereon
CONDITIONS OF APPROVAL, IF ANY:APPROVED BY Hector Villalobos TITLE Area Manager DATE 6/23/97

*See Instructions On Reverse Side

District I
PO Box 1980, Hobbs, NM 88241-1980
District II
PO Drawer DD, Artesia, NM 88211-0719
District III
1000 Rio Brazos Rd., Aztec, NM 87410
District IV
PO Box 2088, Santa Fe, NM 87504-2088

State of New Mexico
Energy, Minerals & Natural Resources Department

OIL CONSERVATION DIVISION
PO Box 2088
Santa Fe, NM 87504-2088

Form C-102
Revised February 21, 1994
Instructions on back
Submit to Appropriate District Office
State Lease - 4 Copies
Fee Lease - 3 Copies

☐ AMENDED REPORT

WELL LOCATION AND ACREAGE DEDICATION PLAT

¹ API Number 30-043-20943	² Pool Code 53620	³ Pool Name SAN LUIS MESA VERDE EXT Undesignated
⁴ Property Code 21035	⁵ Property Name Cobb Resources wildcat	⁶ Well Number 1
⁷ OGRID No. 163721	⁸ Operator Name COBB RESOURCES CORPORATION	⁹ Elevation 6596

¹⁰ Surface Location

UL or lot no. H	Section 22	Township 18 N	Range 3 W	Lot Idn	Feet from the 2240	North/South line North	Feet from the 1110	East/West line East	County Sandoval
--------------------	---------------	------------------	--------------	---------	-----------------------	---------------------------	-----------------------	------------------------	--------------------

¹¹ Bottom Hole Location If Different From Surface

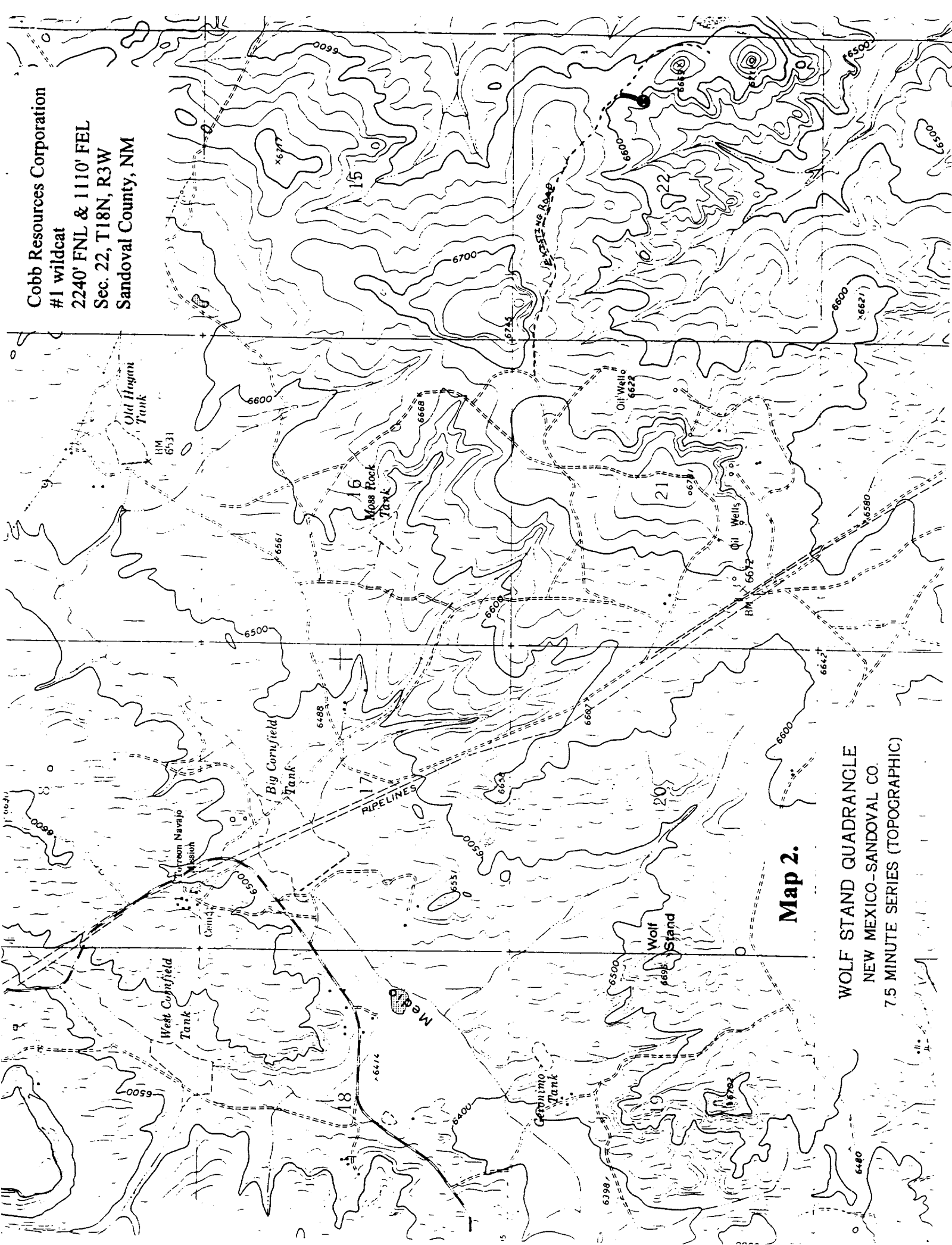
UL or lot no.	Section	Township	Range	Lot Idn	Feet from the	North/South line	Feet from the	East/West line	County
---------------	---------	----------	-------	---------	---------------	------------------	---------------	----------------	--------

¹² Dedicated Acres 40	¹³ Joint or Infill	¹⁴ Consolidation Code	¹⁵ Order No.
-------------------------------------	-------------------------------	----------------------------------	-------------------------

NO ALLOWABLE WILL BE ASSIGNED TO THIS COMPLETION UNTIL ALL INTERESTS HAVE BEEN CONSOLIDATED
OR A NON-STANDARD UNIT HAS BEEN APPROVED BY THE DIVISION

<div>16</div> <div>589°55'W</div> <div>80.00ch.</div> <div>80.00ch.</div> <div>2240'</div> <div>1110'</div> <div>80.00ch.</div> <div>80.00ch.</div> <div>22</div> <div>589°47'W</div> <div>79.93ch.</div>	<div>17 OPERATOR CERTIFICATION</div> <p>I hereby certify that the information contained herein is true and complete to the best of my knowledge and belief</p> <div>Frank A. Welker</div> <div>Signature</div> <div>Frank A. Welker</div> <div>Printed Name</div> <div>Vice President</div> <div>Title</div> <div>4/21/97</div> <div>Date</div>
	<div>18 SURVEYOR CERTIFICATION</div> <p>I hereby certify that the well location shown on this plat was plotted from field notes of actual surveys made by me or under my supervision, and that the same is true and correct to the best of my belief.</p> <div>15 Apr. 1997</div> <div>Date of Survey</div> <div>WILLIAM E. MAHNKE II</div> <div>Signature and Seal of Professional Surveyor</div> <div>NEW MEXICO</div> <div>8466</div> <div>Willam E. Mahnke II</div> <div>Certificate Number</div>

Cobb Resources Corporation
#1 wildcat
2240' FNL & 1110' FEL
Sec. 22, T18N, R3W
Sandoval County, NM



Map 2.

WOLF STAND QUADRANGLE
NEW MEXICO-SANDOVAL CO.
7.5 MINUTE SERIES (TOPOGRAPHIC)