

NO. OF COPIES RECEIVED	5
DISTRIBUTION	
SANTA FE	1
FILE	1
U.S.G.S.	2
LAND OFFICE	
OPERATOR	1

# NEW MEXICO OIL CONSERVATION COMMISSION

Form C-101  
Revised 1-1-65 **30-045-20878**

5A. Indicate Type of Lease	
STATE <input type="checkbox"/>	FEE <input checked="" type="checkbox"/>
5. State Oil & Gas Lease No.	

## APPLICATION FOR PERMIT TO DRILL, DEEPEN, OR PLUG BACK

1a. Type of Work		7. Unit Agreement Name	
b. Type of Well OIL WELL <input checked="" type="checkbox"/> GAS WELL <input type="checkbox"/> OTHER <input type="checkbox"/>		8. Farm or Lease Name Snake Eyes	
2. Name of Operator Tenneco Oil Company		9. Well No. 5	
3. Address of Operator Suite 1200 Lincoln Tower Bldg., Denver, CO 80218		10. Field and Pool, or Wildcat Undesignated Dakota	
4. Location of Well UNIT LETTER M LOCATED 660 FEET FROM THE South LINE AND 660 FEET FROM THE West LINE OF SEC. 21 TWP. 21N RGE. 8W NMPM		12. County San Juan	
19. Proposed Depth 4700		19A. Formation Dakota	
20. Rotary or C.T. Rotary		21. Elevations (Show whether DF, RT, etc.) 6448 GR	
21A. Kind & Status Plug. Bond		21B. Drilling Contractor Unknown	
22. Approx. Date Work will start Upon approval			

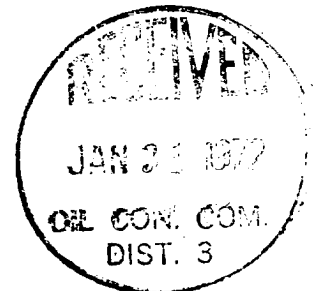
23.

## PROPOSED CASING AND CEMENT PROGRAM

SIZE OF HOLE	SIZE OF CASING	WEIGHT PER FOOT	SETTING DEPTH	SACKS OF CEMENT	EST. TOP
12-1/4"	8-5/8"	24	120	Suff. to circulate	
7-7/8"	5-1/2"	15.5	4700	Suff. to fill 500'	
				above Hospah sand	

Well to be drilled to approximate Total depth of 4700', logged, and if commercial production is indicated, casing will be run to total depth, perforated and formation treated as necessary to establish commercial production. B. O. P. to be tested each 24 hours.

APPROVAL VALID  
FOR 90 DAYS UNLESS  
DRILLING COMMENCED,  
EXPIRES 5-1-72



IN ABOVE SPACE DESCRIBE PROPOSED PROGRAM: IF PROPOSAL IS TO DEEPEN OR PLUG BACK, GIVE DATA ON PRESENT PRODUCTIVE ZONE AND PROPOSED NEW PRODUCTIVE ZONE. GIVE BLOWOUT PREVENTER PROGRAM, IF ANY.

I hereby certify that the information above is true and complete to the best of my knowledge and belief.

Signed G. A. Ford Title Sr. Production Clerk Date January 28, 1972

(This space for State Use)

APPROVED BY G. A. Ford TITLE SUPERVISOR DIST #3 DATE JAN 31 1972

CONDITIONS OF APPROVAL, IF ANY:

**NEW MEXICO OIL CONSERVATION COMMISSION  
WELL LOCATION AND ACERAGE DEDICATION PLAT**

All distances must be from the outer boundaries of the Section

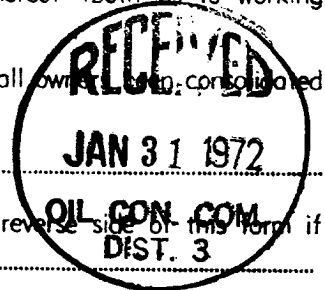
Operator <b>TENNECO OIL COMPANY</b>			Lease <b>SNAKE EYES</b>		Well No. <b>5</b>
Unit Letter <b>M</b>	Section <b>21</b>	Township <b>21 NORTH</b>	Range <b>8 WEST</b>	County <b>SAN JUAN</b>	
Actual Footage Location of Well: <b>660</b> feet from the <b>SOUTH</b> line and <b>660</b> feet from the <b>WEST</b> line					
Ground Level Elev. <b>6448.0</b>	Producing Formation <b>Dakota</b>	Pool <b>Undesignated Dakota</b>	Dedicated Acreage: <b>40</b> Acres		

1. Outline the acreage dedicated to the subject well by colored pencil or hachure marks on the plat below.
2. If more than one lease is dedicated to the well, outline each and identify the ownership thereof (both as to working interest and royalty).
3. If more than one lease of different ownership is dedicated to the well, have the interests of all owners been consolidated by communitization, unitization, force-pooling, etc?

( ) Yes ( ) No If answer is "yes," type of consolidation \_\_\_\_\_

If answer is "no," list the owners and tract descriptions which have actually consolidated. (Use reverse side of this form if necessary.) \_\_\_\_\_

No allowable will be assigned to the well until all interests have been consolidated (by communitization, unitization, forced-pooling, or otherwise) or until a non standard unit, eliminating such interests, has been approved by the Commission.



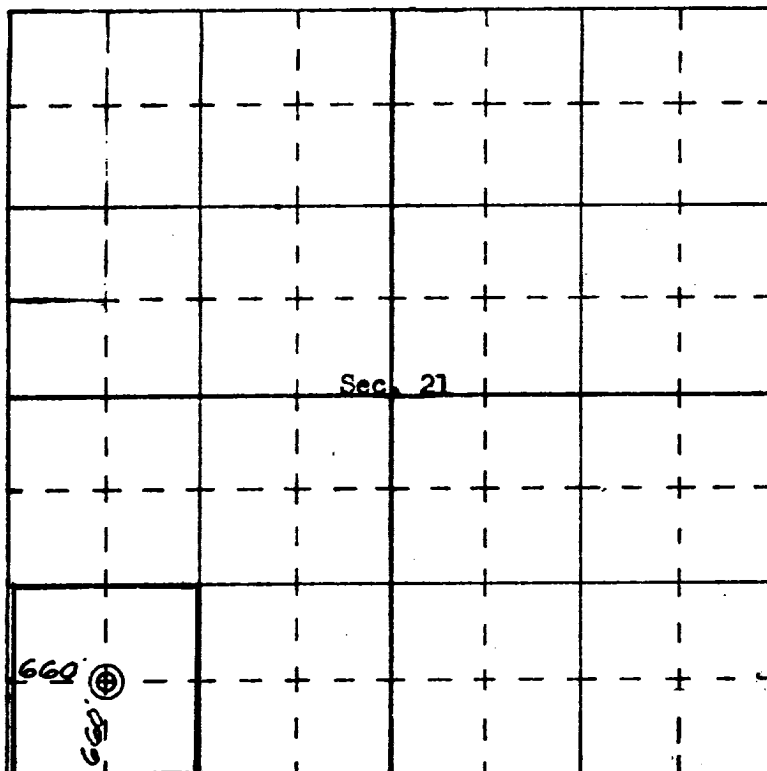
**CERTIFICATION**

I hereby certify that the information contained herein is true and complete to the best of my knowledge and belief.

Name *G. A. Ford*  
**G. A. Ford**  
 Position  
**Sr. Production Clerk**  
 Company  
**Tenneco Oil Company**  
 Date  
**1/28/72**

I hereby certify that the well location shown on this plat was plotted from field notes of actual surveys made by me or under my supervision, and that the same is true and correct to the best of my knowledge and belief.

Date Surveyed **24 January, 1972**  
*James P. Leese*  
 Registered Professional Engineer  
 and Land Surveyor  
**JAMES P. LEESE**  
 Certificate No. **1463**



N

SCALE—4 INCHES EQUALS 1 MILE

SAN JUAN ENGINEERING COMPANY, FARMINGTON, N. M.