

30 645-21927

Form C-101
Revised 1-1-65

NEW MEXICO OIL CONSERVATION COMMISSION

5A. Indicate Type of Lease
STATE ☐ FEE ☒
5. State Oil & Gas Lease No.

NO. OF COPIES RECEIVED	7
DISTRIBUTION	
SANTA FE	1
FILE	1
U.S.G.S.	2
LAND OFFICE	
OPERATOR	3

APPLICATION FOR PERMIT TO DRILL, DEEPEN, OR PLUG BACK

1a. Type of Work
DRILL ☒ DEEPEN ☐ PLUG BACK ☐
b. Type of Well
OIL WELL ☒ GAS WELL ☐ OTHER ☐
SINGLE ZONE ☒ MULTIPLE ZONE ☐
2. Name of Operator
Filon Exploration Corporation
3. Address of Operator
c/o Minerals Management Inc.
501 Airport Dr., Suite 210, Farmington, New Mexico 87401
4. Location of Well
UNIT LETTER H LOCATED 2310 FEET FROM THE North LINE
AND 330 FEET FROM THE East LINE OF SEC. 11 TWP. 21N RGE. 9W NMPM
7. Unit Agreement Name
8. Farm or Lease Name
Santa Fe 11
9. Well No.
#1
10. Field and Pool, or Wildcat
Wildcat Jurassic
12. County
San Juan
19. Proposed Depth
5850
19A. Formation
Jurassic
20. Rotary or C.T.
Rotary
21. Elevations (Show whether DF, RT, etc.)
6503 GR
21A. Kind & Status Plug. Bond
Statewide
21B. Drilling Contractor
Four Corners Drilling
22. Approx. Date Work will start
Nov. 15, 1975

23. PROPOSED CASING AND CEMENT PROGRAM

SIZE OF HOLE	SIZE OF CASING	WEIGHT PER FOOT	SETTING DEPTH	SACKS OF CEMENT	EST. TOP
15"	10 3/4"	40.5#	200	200	Circ.
8 3/4"	7"	23.00#	5850	500	

Operator proposes to drill Jurassic test to 5850'. Completion to be determined from logs.

APPROVAL VALID
FOR 90 DAYS UNLESS
DRILLING COMMENCED,

EXPIRES 2-5-76



NOTE: THIS IS A TIGHT HOLE

IN ABOVE SPACE DESCRIBE PROPOSED PROGRAM: IF PROPOSAL IS TO DEEPEN OR PLUG BACK, GIVE DATA ON PRESENT PRODUCTIVE ZONE AND PROPOSED NEW PRODUCTIVE ZONE. GIVE BLOWOUT PREVENTER PROGRAM, IF ANY.

I hereby certify that the information above is true and complete to the best of my knowledge and belief.

Signed J. Arnold Shell Title Area Manager Minerals Management Inc. Date 11-6-75

(This space for State Use)

APPROVED BY AR Kendrick TITLE SUPERVISOR DIST. #5 DATE NOV 7 1975

CONDITIONS OF APPROVAL, IF ANY:
Suitable blowout preventers to be used below

**NEW MEXICO OIL CONSERVATION COMMISSION
WELL LOCATION AND ACREAGE DEDICATION PLAT**

Form C-102
Supersedes C-128
Effective 1-1-65

All distances must be from the outer boundaries of the Section.

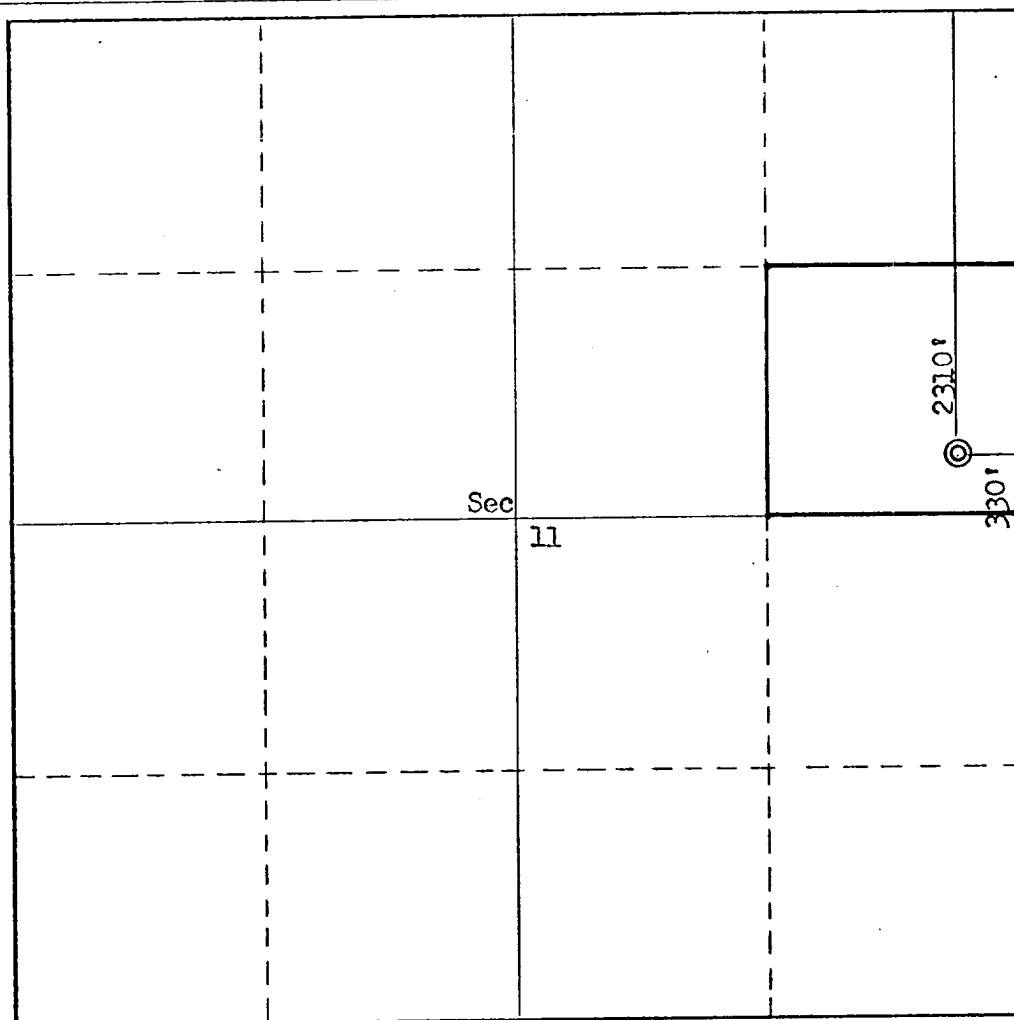
Operator Filon Exploration			Lease Santa Fe 11		Well No. 1
Unit Letter H	Section 11	Township 21N	Range 9W	County San Juan	
Actual Footage Location of Well:					
2310 feet from the North line and		330 feet from the East line			
Ground Level Elev. 6503	Producing Formation Jurassic	Pool Wildcat		Dedicated Acreage: 40 Acres	

1. Outline the acreage dedicated to the subject well by colored pencil or hachure marks on the plat below.
2. If more than one lease is dedicated to the well, outline each and identify the ownership thereof (both as to working interest and royalty).
3. If more than one lease of different ownership is dedicated to the well, have the interests of all owners been consolidated by communization, unitization, force-pooling, etc?

☐ Yes ☐ No If answer is "yes," type of consolidation _____

If answer is "no," list the owners and tract descriptions which have actually been consolidated (Use reverse side of this form if necessary.) _____

No allowable will be assigned to the well until all interests have been consolidated (by communization, unitization, forced-pooling, or otherwise) or until a non-standard unit, eliminating such interests, has been approved by the Commission.



CERTIFICATION

I hereby certify that the information contained herein is true and complete to the best of my knowledge and belief.

Name J. Arnold Inell
 Position _____
 Area Manager
 Company _____
 Minerals Management Inc.
 Date _____
 November 6, 1975

I hereby certify that the well location shown on this plat was plotted from field notes of actual surveys made by me or under my supervision, and that the same is true and correct to the best of my knowledge and belief.

Date Surveyed _____
 November 01, 1975
 Registered Professional Engineer and/or Land Surveyor
Fred B. Kerr Jr.
 Fred B. Kerr Jr.
 Certificate No. _____
 3950