

UNITED STATES
DEPARTMENT OF THE INTERIOR
GEOLOGICAL SURVEY

APPLICATION FOR PERMIT TO DRILL, DEEPEN, OR PLUG BACK

1a. TYPE OF WORK

DRILL ☒DEEPEN ☐PLUG BACK ☐

b. TYPE OF WELL

OIL
WELL ☐GAS
WELL ☒

OTHER

SINGLE
ZONE ☒MULTIPLE
ZONE ☐

2. NAME OF OPERATOR

Benson Mineral Group, Inc.

3. ADDRESS OF OPERATOR

3200 Anaconda Tower, 555 17th St., Denver, CO 80202

4. LOCATION OF WELL (Report location clearly and in accordance with any State requirements.*)

At surface

1460' FWL & 910' FNL Section 30-T23N-R8W
At proposed prod. zone

14. DISTANCE IN MILES AND DIRECTION FROM NEAREST TOWN OR POST OFFICE*

5 miles south of Nageezi, New Mexico

15. DISTANCE FROM PROPOSED*

LOCATION TO NEAREST
PROPERTY OR LEASE LINE, FT.
(Also to nearest drlg. unit line, if any)

910

16. NO. OF ACRES IN LEASE

2483.12

18. DISTANCE FROM PROPOSED LOCATION*
TO NEAREST WELL, DRILLING, COMPLETED,
OR APPLIED FOR, ON THIS LEASE, FT.

None

19. PROPOSED DEPTH

1910

17. NO. OF ACRES ASSIGNED
TO THIS WELL

160.05

20. ROTARY OR CABLE TOOLS

Rotary

21. ELEVATIONS (Show whether DF, RT, GR, etc.)

6811 GR

22. APPROX. DATE WORK WILL START*

As soon as permitted

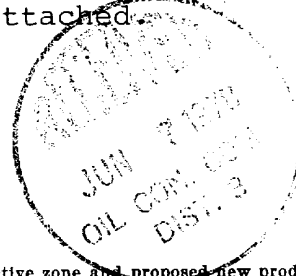
23.

PROPOSED CASING AND CEMENTING PROGRAM

SIZE OF HOLE	SIZE OF CASING	WEIGHT PER FOOT	SETTING DEPTH	QUANTITY OF CEMENT
12 $\frac{1}{4}$	7" used	23	100	100 sx circ.
6 $\frac{1}{4}$	4 " new	9.5	1910	200 sx circ.

The above well is being drilled to evaluate the Chacra formation. Completion intervals and stimulation program will be determined from the study of logs. This acreage is not dedicated to a gas purchaser. Additional information required by NTL-6 for the application to drill and a Multi-Point Surface Use Plan are attached.

RECEIVED



IN ABOVE SPACE DESCRIBE PROPOSED PROGRAM: If proposal is to deepen or plug back, give data on present productive zone and proposed new productive zone. If proposal is to drill or deepen directionally, give pertinent data on subsurface locations and measured and true vertical depths. Give blowout preventer program, if any.

24.

SIGNED

Paul C. Ellison

TITLE

Production Manager

DATE

June 2, 1978

(This space for Federal or State office use)

PERMIT NO.

APPROVAL DATE

APPROVED BY

TITLE

DATE

CONDITIONS OF APPROVAL, IF ANY:

*See Instructions On Reverse Side

**NEW MEXICO OIL CONSERVATION COMMISSION
WELL LOCATION AND ACREAGE DEDICATION PLAT**

Form C-102
Supersedes C-128
Effective 1-1-65

All distances must be from the outer boundaries of the Section.

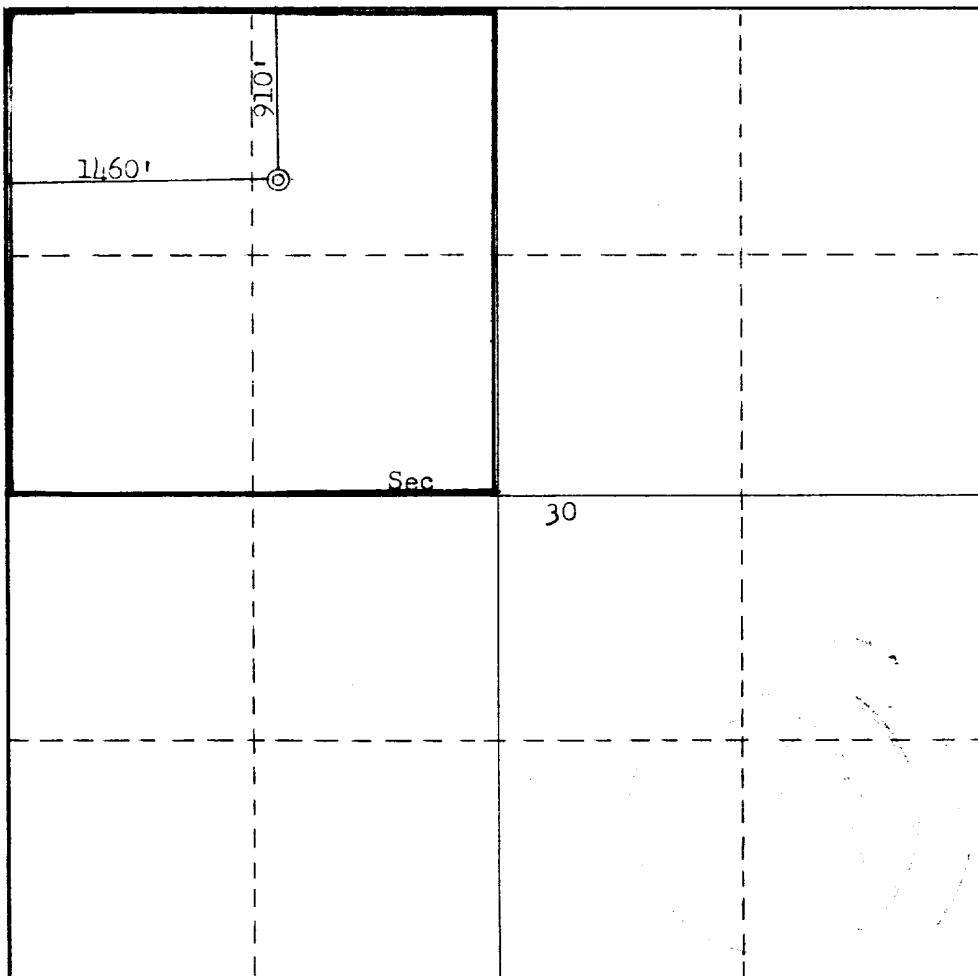
Operator BENSON MINERAL GROUP, INC.			Lease FEDERAL 30-23-8		Well No. 1
Unit Letter C	Section 30	Township 23N	Range 8W	County San Juan	
Actual Footage Location of Well: 910 feet from the North line and 1460 feet from the West line					
Ground Level Elev. 6811	Producing Formation Chacra	Pool Wildcat Undesignated	Dedicated Acreage: 160.05 Acres		

1. Outline the acreage dedicated to the subject well by colored pencil or hatchure marks on the plat below.
2. If more than one lease is dedicated to the well, outline each and identify the ownership thereof (both as to working interest and royalty).
3. If more than one lease of different ownership is dedicated to the well, have the interests of all owners been consolidated by communitization, unitization, force-pooling, etc?

☐ Yes ☐ No If answer is "yes," type of consolidation _____

If answer is "no," list the owners and tract descriptions which have actually been consolidated. (Use reverse side of this form if necessary.) _____

No allowable will be assigned to the well until all interests have been consolidated (by communitization, unitization, forced-pooling, or otherwise) or until a non-standard unit, eliminating such interests, has been approved by the Commission.



CERTIFICATION

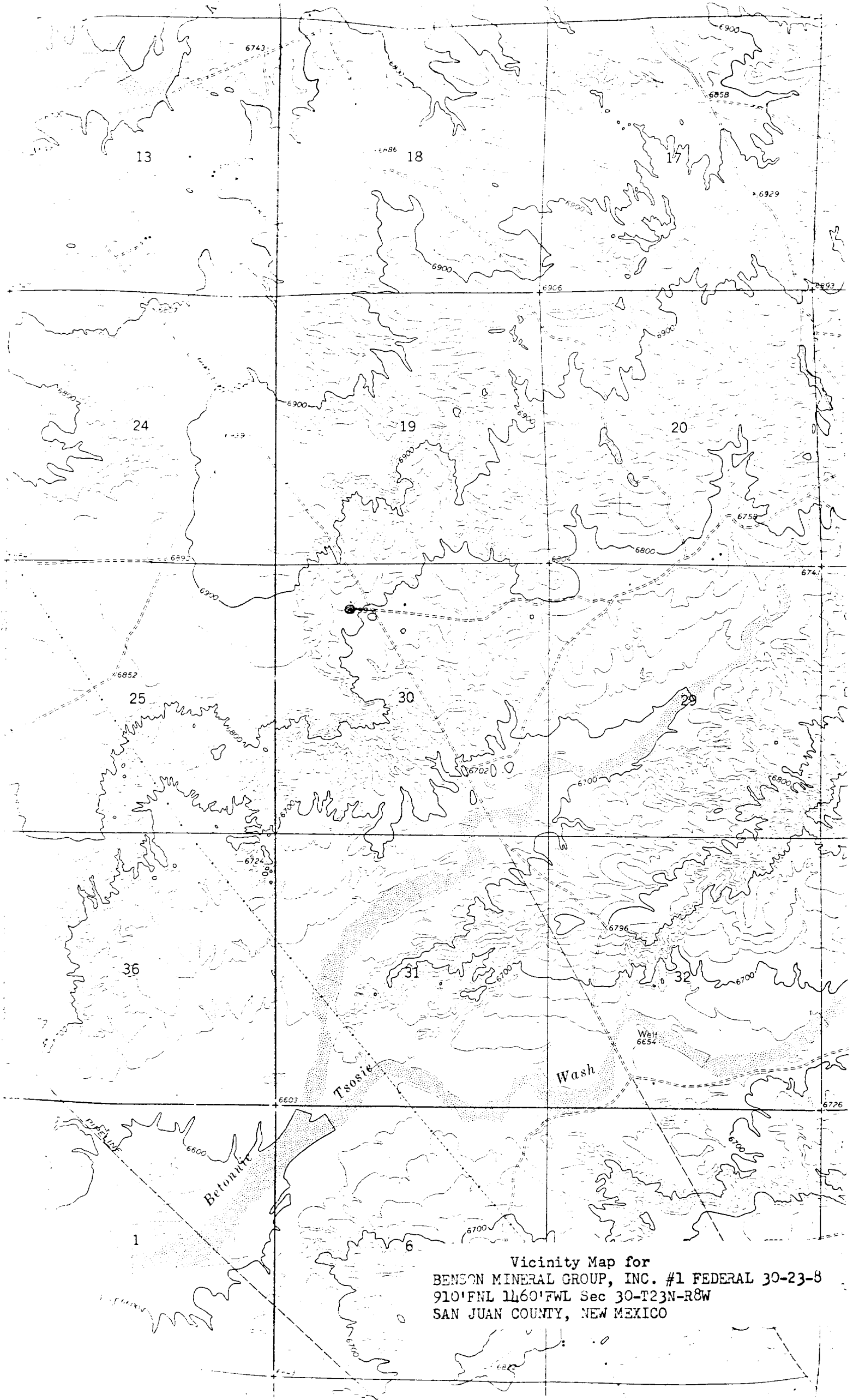
I hereby certify that the information contained herein is true and complete to the best of my knowledge and belief.

Paul C. Ellison
Name **Paul C. Ellison**
Position **Production Manager**
Company **Benson Mineral Group, Inc.**
Date **June 2, 1978**

I hereby certify that the well location shown on this plat was plotted from field notes of actual surveys made by me or under my supervision, and that the same is true and correct to the best of my knowledge and belief.

Date Surveyed **May 11, 1978**
Registered Professional Engineer and/or Land Surveyor
Fred B. Kerr Jr.
Certificate No. **3950**

0 330 660 990 1320 1650 1980 2310 2640 2000 1500 1000 500 0



Vicinity Map for
BENSON MINERAL GROUP, INC. #1 FEDERAL 30-23-8
910'FNL 1160'FWL Sec 30-T23N-R8W
SAN JUAN COUNTY, NEW MEXICO