

UNITED STATES  
DEPARTMENT OF THE INTERIOR  
GEOLOGICAL SURVEY

30-045-25121

APPLICATION FOR PERMIT TO DRILL, DEEPEN, OR PLUG BACK

1a. TYPE OF WORK  
 DRILL ☒ DEEPEN ☐ PLUG BACK ☐

b. TYPE OF WELL  
 OIL WELL ☒ GAS WELL ☐ OTHER ☐  
 SINGLE ZONE ☒ MULTIPLE ZONE ☐

2. NAME OF OPERATOR  
 Kenai Oil and Gas, Inc.

3. ADDRESS OF OPERATOR  
 2000 Energy Center One, 717-17 St. Denver, Colo 80202

4. LOCATION OF WELL (Report location clearly and in accordance with any State requirements.)  
 At surface  
 1830' FSL and 940' FEL  
 At proposed prod. zone  
 Same

14. DISTANCE IN MILES AND DIRECTION FROM NEAREST TOWN OR POST OFFICE\*  
 37 miles to Cuba, New Mexico

15. DISTANCE FROM PROPOSED\* LOCATION TO NEAREST PROPERTY OR LEASE LINE, FT.  
 (Also to nearest drlg. unit line, if any) 940'

16. NO. OF ACRES IN LEASE  
 2243.16

17. NO. OF ACRES ASSIGNED TO THIS WELL  
 40

18. DISTANCE FROM PROPOSED\* LOCATION TO NEAREST WELL, DRILLING COMPLETED, OR APPLIED FOR, ON THIS LEASE, FT.  
 2555'

19. PROPOSED DEPTH  
 5500'

20. ROTARY OR CABLE TOOLS  
 Rotary

21. ELEVATIONS (Show whether DF, RT, GR, etc.)  
 7018 G.L.

22. APPROX. DATE WORK WILL START\*  
 8-1-81

PROPOSED DRILLING AND CEMENTING PROGRAM				This action is subject to administrative appeal pursuant to 30 CFR 230.
SIZE OF HOLE	SIZE OF CASING	WEIGHT PER FOOT	SETTING DEPTH	
12 1/2	8 5/8	24#	550'	300 sx, circulate
7 7/8	4 1/2	10.5#	5500'	815 sx, Cover Ojo Alamo

Selectively test, perforate, and sandwater fracture the Gallup formation. A 3000 psi WP and 6000 psi test double gate preventer with blind and pipe rams will be used for blowout prevention.

The NESE of Section 3 is dedicated to this well. Casing head gas will be sold to Gas Company of N.M.

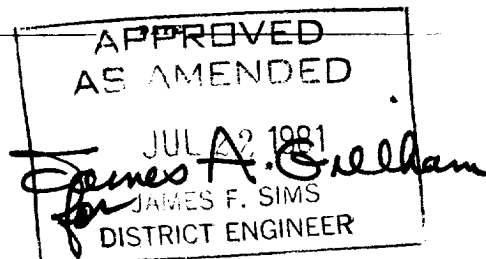


IN ABOVE SPACE DESCRIBE PROPOSED PROGRAM: If proposal is to deepen or plug back, give data on present productive zone and proposed new productive zone. If proposal is to drill or deepen directionally, give pertinent data on subsurface locations and measured and true vertical depths. Give blowout preventer program, if any.

24. SIGNED [Signature] TITLE Agent DATE 6-20-81  
 (This space for Federal or State office use)

PERMIT NO. \_\_\_\_\_ APPROVAL DATE \_\_\_\_\_

APPROVED BY \_\_\_\_\_ TITLE \_\_\_\_\_  
 CONDITIONS OF APPROVAL, IF ANY:



## OIL CONSERVATION DIVISION

STATE OF NEW MEXICO  
ENERGY AND MINERALS DEPARTMENTP. O. BOX 2088  
SANTA FE, NEW MEXICO 87501Form C-107  
Revised 10-1-78

All distances must be from the outer boundaries of the Section.

Operator <b>KENAI OIL &amp; GAS, INCORPORATED</b>			Lease <b>FEDERAL 3</b>		Well No. <b>43</b>
Unit Letter <b>I</b>	Section <b>3</b>	Township <b>23N</b>	Range <b>8W</b>	County <b>San Juan</b>	
Actual Footage Location of Well: <b>1830</b> feet from the <b>South</b> line and <b>940</b> feet from the <b>East</b> line					
Ground Level Elev. <b>7018</b>	Producing Formation <b>Gallup</b>		Pool <b>Lybrook Ext.</b>		Dedicated Acreage: <b>40</b> Acres

1. Outline the acreage dedicated to the subject well by colored pencil or hachure marks on the plat below.
2. If more than one lease is dedicated to the well, outline each and identify the ownership thereof (both as to working interest and royalty).
3. If more than one lease of different ownership is dedicated to the well, have the interests of all owners been consolidated by communitization, unitization, force-pooling, etc?

☐ Yes ☐ No If answer is "yes," type of consolidation \_\_\_\_\_

If answer is "no," list the owners and tract descriptions which have actually been consolidated. (Use reverse side of this form if necessary.) \_\_\_\_\_

No allowable will be assigned to the well until all interests have been consolidated (by communitization, unitization, forced-pooling, or otherwise) or until a non-standard unit, eliminating such interests, has been approved by the Commission.

## CERTIFICATION

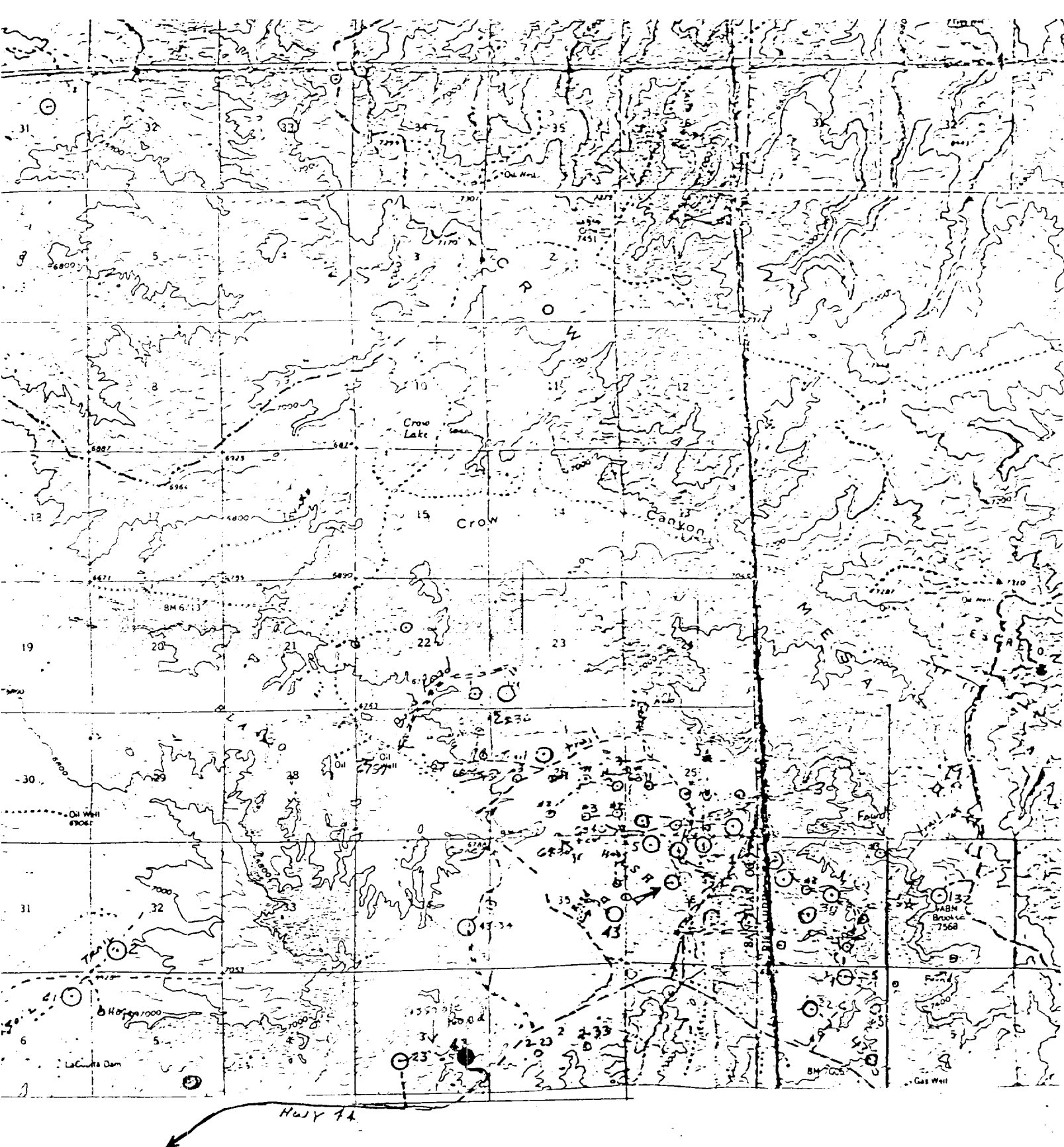
I hereby certify that the information contained herein is true and complete to the best of my knowledge and belief.

Name *J. F. Hledge*  
Position Agent  
Company Kenai Oil and Gas, Inc.  
Date 6-20-81

I hereby certify that the well location shown on this plat was plotted from field notes of actual surveys made by me or under my supervision, and that the same is true and correct to the best of my knowledge and belief.

Date Surveyed June 15, 1981  
Registered Professional Engineer and Land Surveyor  
*Fred B. Kerr Jr.*  
Certificate No. 3950

Scale: 1"=1000'



Vicinity Map for  
 KENAI OIL & GAS, INC. #43 FEDERAL 3  
 1830'FSL 940'FEL Sec. 3-T23N-R8W  
 SAN JUAN COUNTY, NEW MEXICO