

UNITED STATES
DEPARTMENT OF THE INTERIOR
GEOLOGICAL SURVEY20-045-25661
5. LEASE DESIGNATION AND SERIAL NO.

NM 51005

6. IF INDIAN, ALLOTTEE OR TRIBE NAME

7. UNIT AGREEMENT NAME

8. FARM OR LEASE NAME

McDougall

9. WELL NO.

1

10. FIELD AND POOL, OR WILDCAT

Basin Dakota

11. SEC., T., R., M., OR BLK.
AND SURVEY OR AREA

Sec. 17, T23N R10W

12. COUNTY OR PARISH

San Juan

NM

APPLICATION FOR PERMIT TO DRILL, DEEPEN, OR PLUG BACK

1a. TYPE OF WORK

DRILL ☒DEEPEN ☐PLUG BACK ☐

b. TYPE OF WELL

OIL
WELL ☐GAS
WELL ☒

OTHER

SINGLE
ZONE ☒MULTIPLE
ZONE ☐

2. NAME OF OPERATOR

DUGAN PRODUCTION CORP.

3. ADDRESS OF OPERATOR

P O Box 208, Farmington, NM 87499

4. LOCATION OF WELL (Report location clearly and in accordance with any State requirements.)

At surface

1650' FSL - 1650' FEL

At proposed prod. zone

14. DISTANCE IN MILES AND DIRECTION FROM NEAREST TOWN OR POST OFFICE*

10 mi. West of Nageezi, NM

15. DISTANCE FROM PROPOSED*

LOCATION TO NEAREST
PROPERTY OR LEASE LINE, FT.
(Also to nearest drlg. unit line, if any)

1650'

16. NO. OF ACRES IN LEASE

1239.82

17. NO. OF ACRES ASSIGNED
TO THIS WELL

S 320

18. DISTANCE FROM PROPOSED LOCATION*

TO NEAREST WELL, DRILLING, COMPLETED,
OR APPLIED FOR, ON THIS LEASE, FT.

1 mile

19. PROPOSED DEPTH

5435'

20. ROTARY OR CABLE TOOLS

Rotary

21. ELEVATIONS (Show whether DF, RT, GR, etc.)

6572' GL; 6584' RKB

DRILLING OPERATIONS AUTHORIZED ARE

SUBJECT TO COMPLIANCE WITH ATTACHED

PROPOSED CASING AND CEMENTING PROGRAM

"GENERAL REQUIREMENTS"

22. APPROX. DATE WORK WILL START*

ASAP

23. This action is subject to administrative
appeal pursuant to 30 CFR 290.

SIZE OF HOLE	SIZE OF CASING	WEIGHT PER FOOT	SETTING DEPTH	QUANTITY OF CEMENT
12-1/4"	8-5/8"	32#	200'	159 cu.ft. (135 sx)
7-7/8"	4-1/2"	11.6 & 10.5	5435'	1550 cu.ft.

Plan to drill with spud mud to set surface casing. Will then drill with water-mud-gel mixture to test the Basin Dakota Formation. Plan to run IES & CDL logs and, if well appears productive, will run 4½" casing. Will selectively perforate, frac clean up after frac, and complete well using 1½ or 2-3/8" tubing.

GAS NOT DEDICATED.

IN ABOVE SPACE DESCRIBE PROPOSED PROGRAM: If proposal is to deepen or plug back, give data on present productive zone and proposed new productive zone. If proposal is to drill or deepen directionally, give pertinent data on subsurface locations and measured and true vertical depths. Give blowout preventer program, if any.

24. SIGNED Jerry McHugh TITLE Landman DATE 3-30-83
(This space for Federal or State office use)

PERMIT NO.

APPROVAL DATE

APPROVED BY

TITLE

CONDITIONS OF APPROVAL, IF ANY:

APPROVED
AS AMENDEDAPR 14 1983
JAMES F. SIMS
DISTRICT ENGINEER

*See Instructions On Reverse Side

Nelson

OIL CONSERVATION DIVISION

STATE OF NEW MEXICO
ENERGY AND MINERALS DEPARTMENTP. O. BOX 2088
SANTA FE, NEW MEXICO 87501Form C-102
Revised 10-1-78

All distances must be from the outer boundaries of the Section.

Operator Dugan Production Corporation		Lease McDougall		Well No. 1	
Unit Letter J	Section 17	Township 23 North	Range 10 West	County San Juan	
Actual Footage Location of Well:					
1650 feet from the South line and		1650 feet from the East line			
Ground Level Elev. 6572	Producing Formation Dakota	Pool Basin Dakota	Dedicated Acreage: S 320 Acres		

1. Outline the acreage dedicated to the subject well by colored pencil or hatchure marks on the plat below.
2. If more than one lease is dedicated to the well, outline each and identify the ownership thereof (both as to working interest and royalty).
3. If more than one lease of different ownership is dedicated to the well, have the interests of all owners been consolidated by communitization, unitization, force-pooling, etc?

☐ Yes ☐ No If answer is "yes," type of consolidation _____

If answer is "no," list the owners and tract descriptions which have actually been consolidated. (Use reverse side of this form if necessary.) _____

No allowable will be assigned to the well until all interests have been consolidated (by communitization, unitization, forced-pooling, or otherwise) or until a non-standard unit, eliminating such interests, has been approved by the Division.

RECEIVED
APR 18 1983
OIL CON. DIV.
(DIST. 3)**RECEIVED**
MAR 21 1983
OIL CON. DIV.
SURVEY

SEC. 17

100% Dugan

1650
1650

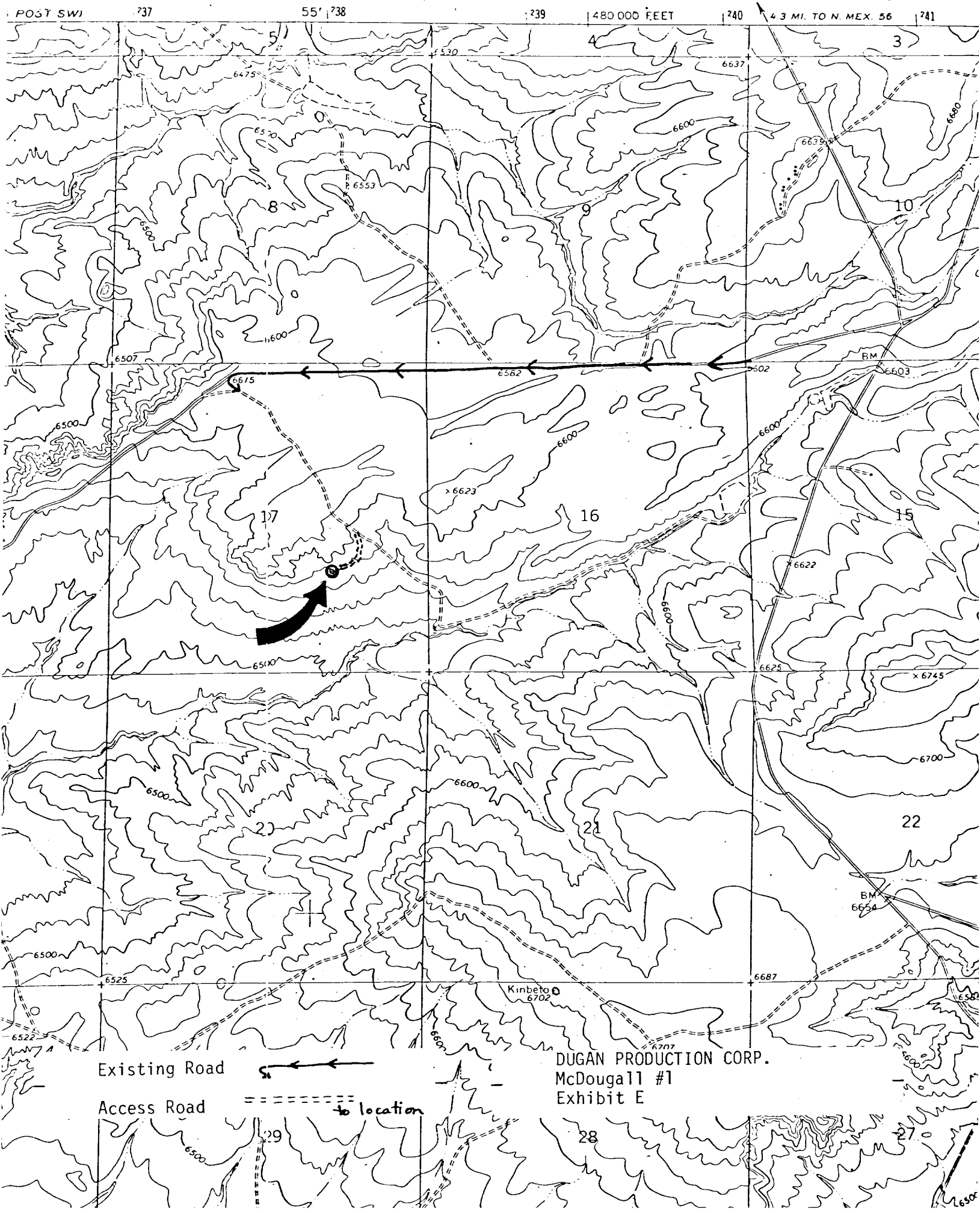
CERTIFICATION

I hereby certify that the information contained herein is true and complete to the best of my knowledge and belief.

Name
Jerry McHugh
Jerry McHughPosition
LandmanCompany
Dugan Production Corp.Date
3-30-83

I hereby certify that the well location shown on this plat was surveyed from field notes of actual measurements made by me or under my supervision, and that the same is true and correct to the best of my knowledge and belief.

Date Surveyed
March 25, 1983Registered Professional Engineer
and/or Land Surveyor*Edgar L. Risenhoover*
Certificate No. 5979



POST SW

737

55' 738

739

480 000 FEET

740

4.3 MI. TO N. MEX. 56

741

Existing Road

Access Road

to location

DUGAN PRODUCTION CORP.
McDougall #1
Exhibit E