

RECEIVED

SUBMIT IN TRIPLICATE

(Other instructions on reverse side)

OCT 10 1985

Form approved.
Budget Bureau No. 1004-0136
Expires August 31, 1985

UNITED STATES
DEPARTMENT OF THE INTERIOR

BUREAU OF LAND MANAGEMENT

BUREAU OF LAND MANAGEMENT

APPLICATION FOR PERMIT TO DRILL, DEEPEN, OR PLUG BACK

1a. TYPE OF WORK

DRILL ☒

DEEPEN ☐

PLUG BACK ☐

b. TYPE OF WELL

OIL WELL ☒

GAS WELL ☐

OTHER

SINGLE ZONE ☒

MULTIPLE ZONE ☐

2. NAME OF OPERATOR

Yates Drilling Company

3. ADDRESS OF OPERATOR

207 South 4th Street, Artesia, New Mexico 88210

4. LOCATION OF WELL (Report location clearly and in accordance with any State requirements.)

At surface

2285' FSL & 2055' FEL (NW SE)

At proposed prod. zone
same

14. DISTANCE IN MILES AND DIRECTION FROM NEAREST TOWN OR POST OFFICE*

Location is 5.5 miles southeast of Nageezi, New Mexico

10. DISTANCE FROM PROPOSED*
LOCATION TO NEAREST
PROPERTY OR LEASE LINE, FT.
(Also to nearest drilg. unit line, if any)

16. NO. OF ACRES IN LEASE

480

17. NO. OF ACRES ASSIGNED
TO THIS WELL

40

18. DISTANCE FROM PROPOSED LOCATION*
TO NEAREST WELL, DRILLING, COMPLETED,
OR APPLIED FOR, ON THIS LEASE, FT.

19. PROPOSED DEPTH

5000'

20. ROTARY OR CABLE TOOLS

Rotary

21. ELEVATIONS (Show whether DF, RT, GR, etc.)

6727' GR

22. APPROX. DATE WORK WILL START*

October 31, 1985

DRILLING OPERATIONS AUTHORIZED ARE
SUBJECT TO COMPLIANCE WITH ATTACHED
"GENERAL REQUIREMENTS"

PROPOSED CASING AND CEMENTING PROGRAM

This action is subject to technical and
procedural review pursuant to 43 CFR 3136.3
and appeal pursuant to 43 CFR 3135.4

SIZE OF HOLE	SIZE OF CASING	WEIGHT PER FOOT	SETTING DEPTH	
12 1/4"	8 5/8" new	24# K-55 ST&C	225'	170 sxs-circulate to surface
7 7/8"	5 1/2" new	15.5# K-55 ST&C	5000'	1310 sxs + additives

1. Drill 12 1/4" hole and set 8 5/8" surface casing to 205' with good returns.
2. Log B.O.P. checks in daily drill reports and drill 7 7/8" hole to 5050'.
3. Run tests if warranted and run 5 1/2" casing if productive.
4. Run logs, as needed, and perforate and stimulate as needed.

EXHIBITS ATTACHED:

- "A" Location and Elevation Plat
- "B" Drilling Program to Accompany A.P.D.
- "C" The Blowout Preventer Equipment
- "D" Surface Use Program to Accompany A.P.D.
- "E" & "E-1" Access Road Maps to Location
- "F" Radius Map of Field
- "G" Drill Pad Layout, Cut-Fill Cross Section
- "H" Drill Rig Layout

IN ABOVE SPACE DESCRIBE PROPOSED PROGRAM: If proposal is to deepen or plug back, give data on present productive zone and proposed new productive zone. If proposal is to drill or deepen directionally, give pertinent data on subsurface locations and measured and true vertical depths. Give blowout preventer program, if any.

SIGNED

TITLE

(This space for Federal or State office use)

PERMIT NO.

APPROVAL DATE

APPROVED BY

TITLE

CONDITIONS OF APPROVAL, IF ANY:

APPROVED

AS AMENDED

DEC 3 1985

John S. Keller

M. MILLENBACH
AREA MANAGER

NMOCC

NEW MEXICO OIL CONSERVATION COMMISSION
WELL LOCATION AND ACREAGE DEDICATION PLAT

EXHIBIT "A"

Form C-102
Supersedes C-128
Effective 1-1-65

All distances must be from the outer boundaries of the Section.

Operator YATES DRILLING COMPANY			Lease GILLESPIE FEDERAL		Well No. 1
Unit Letter J	Section 29	Township 23N	Range 8W	County San Juan	
Actual Footage Location of Well: 2285 feet from the South line and 2055 feet from the East line					
Ground Level Elev: 6727	Producing Formation Lower Mancos <i>Collins</i>		Pool Wildcat		Dedicated Acreage: 40 Acres

1. Outline the acreage dedicated to the subject well by colored pencil or hachure marks on the plat below.
2. If more than one lease is dedicated to the well, outline each and identify the ownership thereof (both as to working interest and royalty).
3. If more than one lease of different ownership is dedicated to the well, have the interests of all owners been consolidated by communitization, unitization, force-pooling, etc?

☐ Yes ☐ No If answer is "yes," type of consolidation _____

If answer is "no," list the owners and tract descriptions which have actually been consolidated. (Use reverse side of this form if necessary.) _____

No allowable will be assigned to the well until all interests have been consolidated (by communitization, unitization, forced-pooling, or otherwise) or until a non-standard unit, eliminating such interests, has been approved by the Commission.

<p>RECEIVED OCT 10 1985 BUREAU OF LAND MANAGEMENT FARMINGTON RESOURCE AREA</p>		Fd.	
		<p>Sec. 29</p>	
<p>2285'</p>		<p>2055'</p>	
<p>2285'</p>		Fd.	

CERTIFICATION

I hereby certify that the information contained herein is true and complete to the best of my knowledge and belief.

Connie L. Frailey
Name **Connie L. Frailey**, Vice-President, Env. Services,

Position
POWERS ELEVATION, Agent
Company **Consultant for Yates Drilling Company**

Date
October 9, 1985

I hereby certify that the well location shown on this plat was plotted from field notes of actual surveys made by me or under my supervision, and that the same is true and correct to the best of my knowledge and belief.

Date Surveyed
William E. Mahke II

Registered Professional Engineer and Land Surveyor

William E. Mahke II
Certification
8466

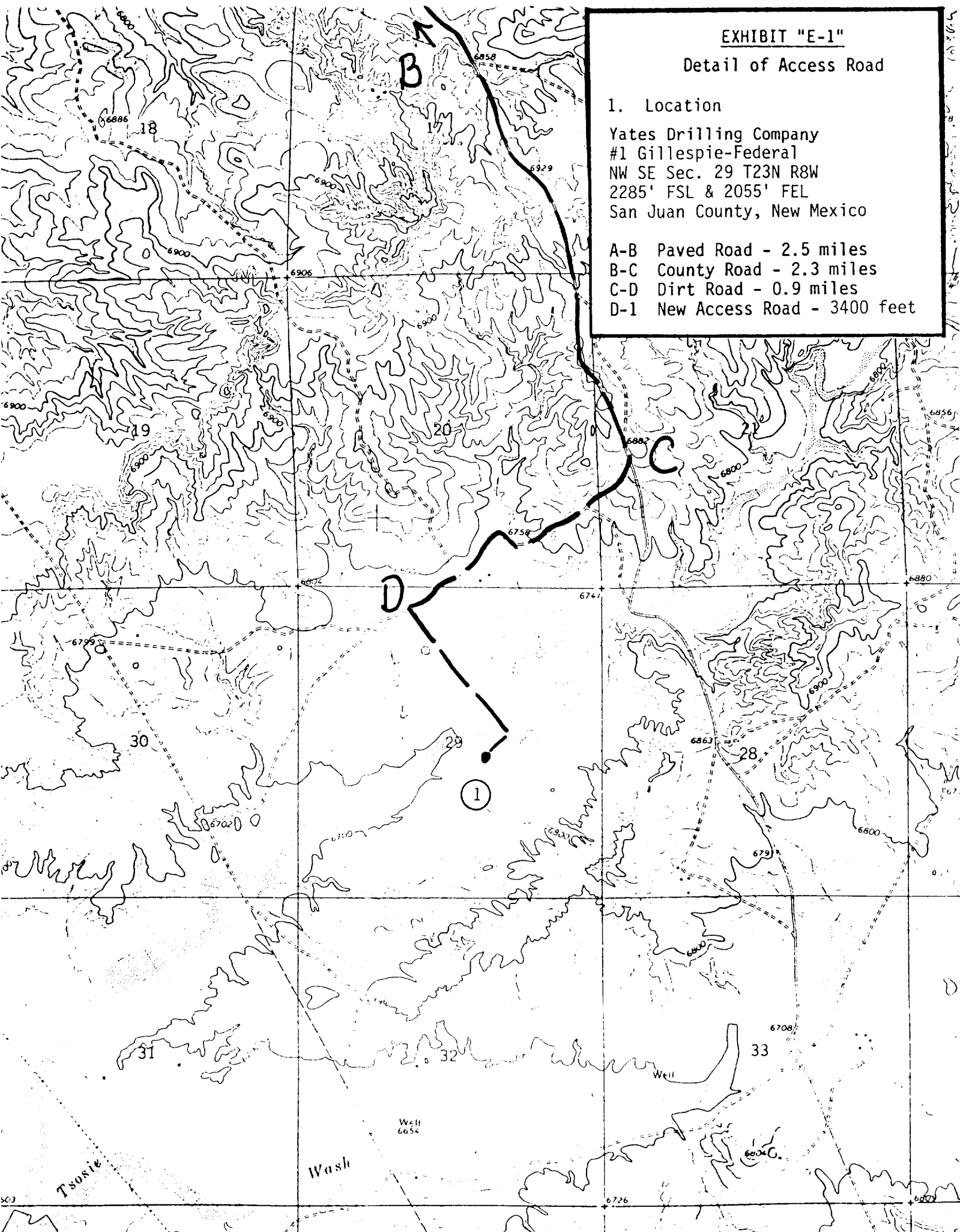
EXHIBIT "E-1"

Detail of Access Road

1. Location

Yates Drilling Company
#1 Gillespie-Federal
NW SE Sec. 29 T23N R8W
2285' FSL & 2055' FEL
San Juan County, New Mexico

- A-B Paved Road - 2.5 miles
- B-C County Road - 2.3 miles
- C-D Dirt Road - 0.9 miles
- D-1 New Access Road - 3400 feet



5. LEASE DESIGNATION AND SERIAL NO.

NM-26659

6. IF INDIAN, ALLOTTEE OR TRIBE NAME

7. UNIT AGREEMENT NAME

8. FARM OR LEASE NAME

Gillespie Federal

9. WELL NO.

1

10. FIELD AND POOL, OR WILDCAT

Wildcat

11. SEC., T., R., M., OR BLK. AND
SURVEY OR AREA

Section 29-T23N-R8W

12. COUNTY OR PARISH 13. STATE

San Juan

NM

**BUREAU OF LAND MANAGEMENT
FARMINGTON RESOURCE AREA**

OCT 17 1985

RECEIVED

James Drilling Corp.,

297 North Fourth Street, Farmington, NM 88401

297' Well No. 1 (NW 1/4)

15-17' OR

15-17' OR

15-17' OR

REPAIRING WELL

ABANDONING CASING

ABANDONING WELL

Complete program

A

Complete program of multiple completion on Well
Completion or Production Report and Log Form

Program:

First stage of completion program will be up to 1300', protecting down hole
pay zones of the Upper Mancos, Niobrara, Gallup and Lower Mancos.

Second stage of completion program will tie back into surface casing at approx.
1225', protecting the Ojo Alamo Waterflood by isolating it and all productive
zones.

RECEIVED

OCT 16 1985

BLM DIV.

755.3

Regulatory Agent

Oct 16 1985

**APPROVED
AS AMENDED**

DEC 3 1985

[Signature]
M. MILLENBACH
AREA MANAGER

15-17' OR

NMOCC