

6 BLM 1 File
UNITED STATES
DEPARTMENT OF THE INTERIOR
GEOLOGICAL SURVEYSUBMIT IN TRIPLICATE*
(Other instructions on
reverse side)Form approved.
Budget Bureau No. 42-R1425.

50-045-26612

5. LEASE DESIGNATION AND SERIAL NO.
NM 16762

6. IF INDIAN, ALLOTTEE OR TRIBE NAME

7. UNIT AGREEMENT NAME

8. FARM OR LEASE NAME
Witty

9. WELL NO.
6

10. FIELD AND POOL, OR WILDCAT
Undesignated Gallup

11. SEC., T., R., M., OR B.L.
AND SURVEY OR AREA
K Sec. 12, T23N, R10W, NMPM

12. COUNTY OR PARISH 13. STATE
San Juan NM

APPLICATION FOR PERMIT TO DRILL, DEEPEN, OR PLUG BACK

1a. TYPE OF WORK

DRILL ☒DEEPEN ☐PLUG BACK ☐

b. TYPE OF WELL

OIL
WELL ☒GAS
WELL ☐

OTHER

SINGLE
ZONE ☒MULTIPLE
ZONE ☐

2. NAME OF OPERATOR

DUGAN PRODUCTION CORP.

3. ADDRESS OF OPERATOR

P O Box 208, Farmington, NM 87499

4. LOCATION OF WELL (Report location clearly and in accordance with any State requirements.)

At surface

2010' FSL - 1650' FWL

At proposed prod. zone

NOV 25 1985

14. DISTANCE IN MILES AND DIRECTION FROM NEAREST TOWN OR POST OFFICE

7 1/2 miles SW of Blanco Trading Post

15. DISTANCE FROM PROPOSED*

LOCATION TO NEAREST
PROPERTY OR LEASE LINE, FT.
(Also to nearest drlg. unit line, if any)

1980'

16. NO. OF ACRES IN LEASE

1080

17. NO. OF ACRES ASSIGNED

TO THIS WELL

40

18. DISTANCE FROM PROPOSED LOCATION*

TO NEAREST WELL, DRILLING, COMPLETED,
OR APPLIED FOR, ON THIS LEASE, FT.1500' NE of
DPC's Witty #1

19. PROPOSED DEPTH

4830'

20. ROTARY OR CABLE TOOLS

Rotary

21. ELEVATIONS (Show whether DF, RT, GR, etc.)

6763' GL; 6775' RKB

22. APPROX. DATE WORK WILL START*

ASAP

23. DRILLING OPERATIONS AUTHORIZED ARE
SUBJECT TO COMPLIANCE WITH ATTACHED
"GENERAL REQUIREMENTS"This action is subject to technical and
procedural review, current and
and aspect of the program.

SIZE OF HOLE	SIZE OF CASING	WEIGHT PER FOOT	SETTING DEPTH	QUANTITY OF CEMENT
12-1/4"	8-5/8"	24#	200'	159 cf circulated to surface
7-7/8"	4-1/2"	10.5#	4830'	1448 cf circulated to surface

Plan to drill a 12 1/4" hole and set 200' of 8-5/8" OD, 24#, J-55 surface casing; then plan to drill a 7-7/8" hole to total depth with gel-water-mud program to test Gallup formation. Plan to run IES and CDL logs. If determined productive, will run 4-1/2", 10.5#, J-55 casing, selectively perforate, frac, clean out after frac and complete well.

IN ABOVE SPACE DESCRIBE PROPOSED PROGRAM: If proposal is to deepen or plug back, give data on present productive zone and proposed new productive zone. If proposal is to drill or deepen directionally, give pertinent data on subsurface locations and measured and true vertical depths. Give blowout preventer program, if any.

24.

SIGNED

Barbara Williams

TITLE

Petroleum Engineer

DATE

11-19-85

(This space for Federal or State office use)

PERMIT NO.

APPROVAL DATE

APPROVED
AS AMENDED

APPROVED BY

TITLE

CONDITIONS OF APPROVAL, IF ANY:

Hold C-104
for NISC

*See Instructions On Reverse Side

NMOCG

DEC 05 1985
John M. Millenbach
AREA MANAGER

NEW MEXICO OIL CONSERVATION COMMISSION
WELL LOCATION AND ACREAGE DEDICATION PLAT

Form C-102
Supersedes C-128
Effective 1-1-65

All distances must be from the outer boundaries of the Section.

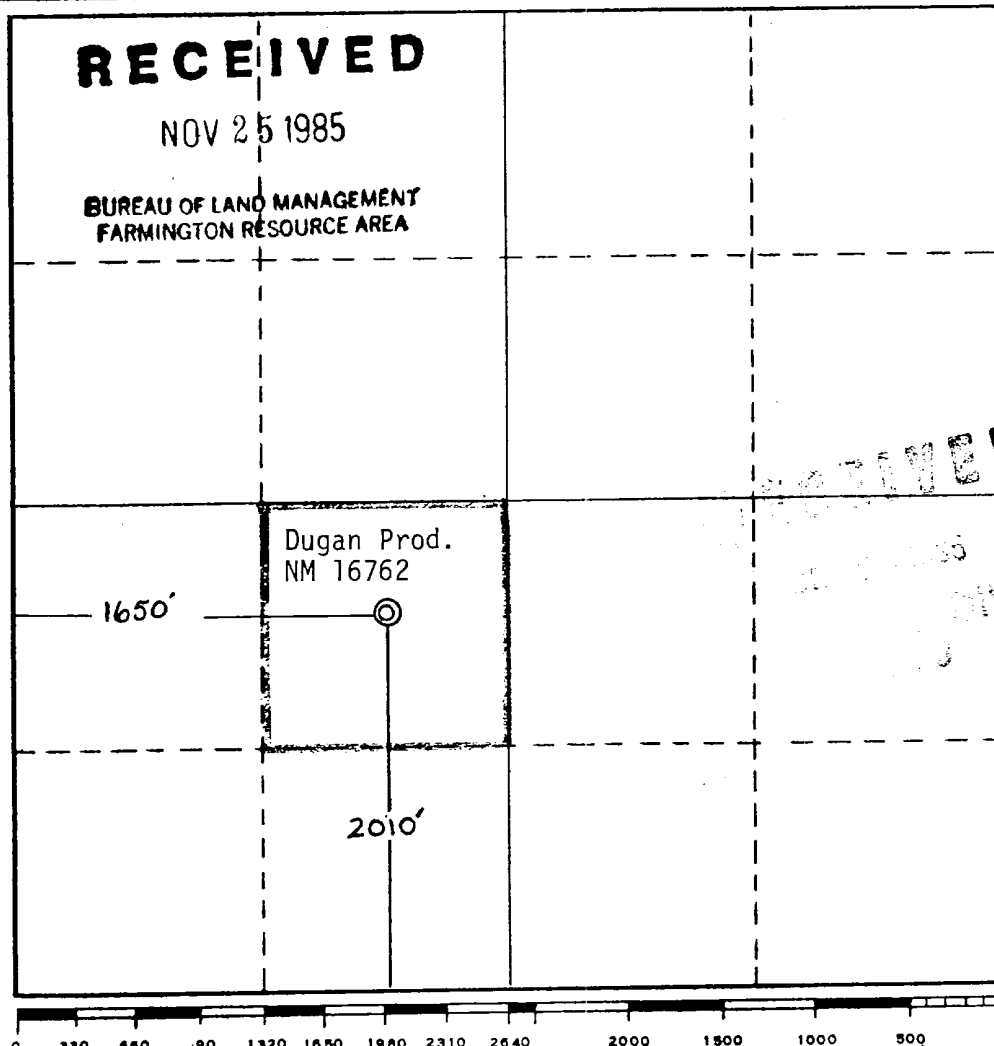
Operator Dugan Production Corp.			Lease Witty		Well No. 6
Unit Letter K	Section 12	Township 23 North	Range 10 West	County San Juan	
Actual Footage Location of Well: 2010 feet from the South line and 1650 feet from the West line					
Ground Level Elev. 6763	Producing Formation Gallup	Pool Undesignated Gallup		Dedicated Acreage: 40 Acres	

1. Outline the acreage dedicated to the subject well by colored pencil or hachure marks on the plat below.
2. If more than one lease is dedicated to the well, outline each and identify the ownership thereof (both as to working interest and royalty).
3. If more than one lease of different ownership is dedicated to the well, have the interests of all owners been consolidated by communitization, unitization, force-pooling, etc?

☐ Yes ☐ No If answer is "yes," type of consolidation _____

If answer is "no," list the owners and tract descriptions which have actually been consolidated. (Use reverse side of this form if necessary.) _____

No allowable will be assigned to the well until all interests have been consolidated (by communitization, unitization, forced-pooling, or otherwise) or until a non-standard unit, eliminating such interests, has been approved by the Commission.



CERTIFICATION

I hereby certify that the information contained herein is true and complete to the best of my knowledge and belief.

Sherman E. Dugan
Name

Sherman E. Dugan
Position

Geologist

Company
Dugan Production Corp.

Date
11-19-85

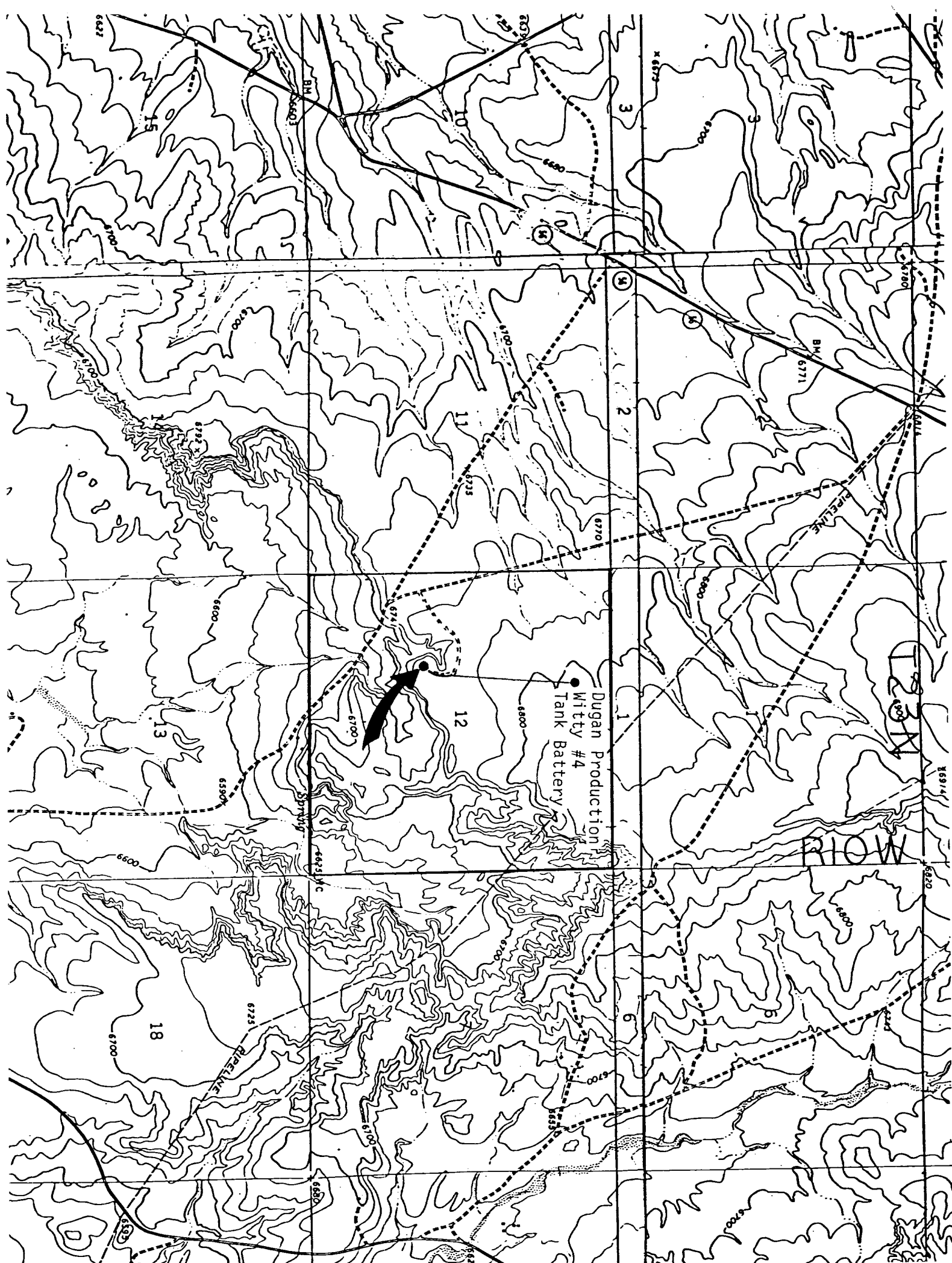
I hereby certify that the well location shown on this plat was plotted from field notes of actual surveys made by me or under my supervision, and that the same is true and correct to the best of my knowledge and belief.

Date Surveyed
11-15-85

Registered Professional Engineer
and/or Land Surveyor

Thomas A. Dugan
Certificate No. 2373

Thomas A. Dugan, P.E./L.S.



DUGAN PRODUCTION CORP. - Witty #6

Existing Roads

Exhibit E

Distance from nearest town or reference pt.
7 1/2 miles south of Blanco Trading Post

Type of surface dirt

Conditions good

Other _____

DUGAN PRODUCTION CORP. - Witty #6

Planned Access Road(s)

Exhibit E

Width 20' Maximum grades _____

Drainage design _____ as required

Cuts & Fills _____

Surfacing material _____

↳ Turnouts

▤ Culverts

▨ Gates

▧ Cattleguards

▨ Fence cuts

————— pipeline

= = = = existing 2-track

- - - - access road

Access road(s) do/do not cross Fed/Ind land.