

UNITED STATES  
DEPARTMENT OF THE INTERIOR  
GEOLOGICAL SURVEY

## APPLICATION FOR PERMIT TO DRILL, DEEPEN, OR PLUG BACK

## 1A. TYPE OF WORK

DRILL ☒DEEPEN ☐PLUG BACK ☐

## B. TYPE OF WELL

OIL  
WELL ☒GAS  
WELL ☐

OTHER

SINGLE  
ZONE ☒MULTIPLE  
ZONE ☐

## 2. NAME OF OPERATOR

DUGAN PRODUCTION CORP.

## 3. ADDRESS OF OPERATOR

P.O. Box 420, Farmington, NM 87499

## 4. LOCATION OF WELL (Report location clearly and in accordance with any State requirements.)\*

At surface

660' FNL &amp; 1980' FWL

At proposed prod. zone

## 14. DISTANCE IN MILES AND DIRECTION FROM NEAREST TOWN OR POST OFFICE\*

approx. 9½ miles SW of Blanco Trading Post

## 15. DISTANCE FROM PROPOSED\*

LOCATION TO NEAREST  
PROPERTY OR LEASE LINE, FT.

660'

(Also to nearest drlg. unit line, if any)

## 18. DISTANCE FROM PROPOSED LOCATION\*

TO NEAREST WELL, DRILLING, COMPLETED,  
OR APPLIED FOR, ON THIS LEASE, FT. 1867' from  
proposed DPC

## 16. NO. OF ACRES IN LEASE

640

17. NO. OF ACRES ASSIGNED  
TO THIS WELL

80

## 19. PROPOSED DEPTH

4675'

## 20. ROTARY OR CABLE TOOLS

Rotary

## 21. ELEVATIONS (Show whether DF, RT, GR, etc.)

6555' GL

DRILLING OPERATIONS AUTHORIZED ARE  
SUBJECT TO COMPLIANCE WITH ATTACHED  
FEDERAL REQUIREMENTS.

## 22. APPROX. DATE WORK WILL START\*

ASAP

## 23.

This action is subject to technical and  
procedural review pursuant to 43 CFR 3165.3  
and appeal pursuant to 43 CFR 3165.4.

SIZE OF HOLE	SIZE OF CASING	WEIGHT PER FOOT	SETTING DEPTH	QUANTITY OF CEMENT
12-1/4"	8-5/8"	24#	200'	159 cf circ. to surface
7-7/8"	4-1/2"	10.5#	4675'	1476 cf circ. to surface

Plan to drill a 12-1/4" hole and set 200' of 8-5/8" OD, 24#, J-55 surface casing; then plan to drill a 7-7/8" hole to total depth with gel-water-mud program to test Gallup formation. Plan to run IES and CDL logs. If determined productive, will run 4-1/2", 10.5#, J-55 casing, selectively perforate, frac, clean out after frac and complete well.

RECEIVED

JUN 19 1989

RECEIVED


JUL 12 1989

OIL CON. DIV.  
DIST. 3BUREAU OF LAND MANAGEMENT  
FARMINGTON RESOURCE AREA

IN ABOVE SPACE DESCRIBE PROPOSED PROGRAM: If proposal is to deepen or plug back, give data on present productive zone and proposed new productive zone. If proposal is to drill or deepen directionally, give pertinent data on subsurface locations and measured and true vertical depths. Give blowout preventer program, if any.

24.

SIGNED

  
Sherman E. Dugan  
(This space for Federal or State office use)

TITLE

Vice President/  
Geologist

PERMIT NO.

APPROVAL DATE

APPROVED BY

CONDITIONS OF APPROVAL, IF ANY:

TITLE

APPROVED  
AS-APPROVED

JUL 10 1989

AREA MANAGER

Submit to Appropriate  
District Office  
State Lease - 4 copies  
Fee Lease - 3 copies

State of New Mexico  
Energy, Minerals and Natural Resources Department

Form C-102  
Revised 1-1-89

OIL CONSERVATION DIVISION

P.O. Box 2088  
Santa Fe, New Mexico 87504-2088

DISTRICT I  
P.O. Box 1980, Hobbs, NM 88240

DISTRICT II  
P.O. Drawer DD, Artesia, NM 88210

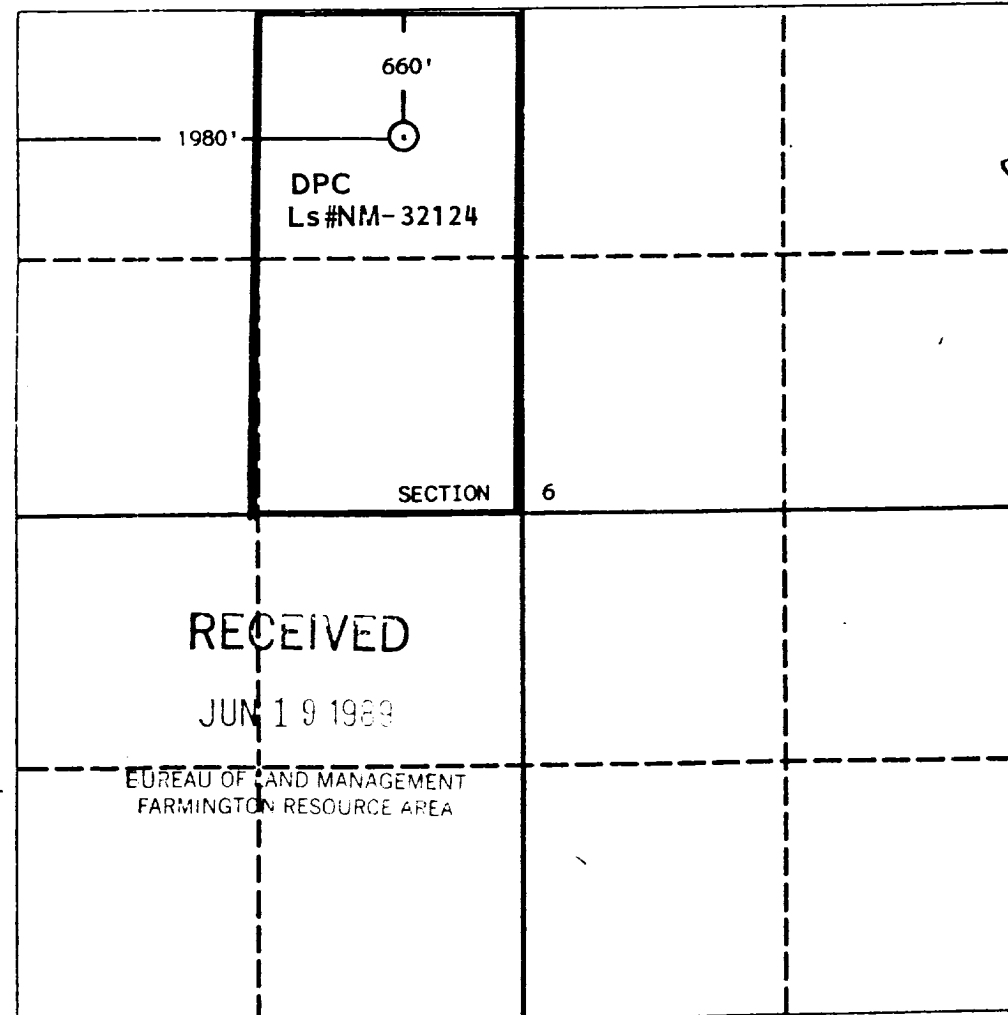
DISTRICT III  
1000 Rio Brazos Rd., Aztec, NM 87410

WELL LOCATION AND ACREAGE DEDICATION PLAT

All Distances must be from the outer boundaries of the section

Operator Dugan Production Corporation			Lease Calgary		Well No. 3
Unit Letter C	Section 6	Township 23 North	Range 10 West	County San Juan	
Actual Footage Location of Well: 660 feet from the North line and 1980 feet from the West line					
Ground level Elev. 6555	Producing Formation Gallup		Pool South Bisti Gallup Ext.	Dedicated Acreage: 80 Acres	

1. Outline the acreage dedicated to the subject well by colored pencil or hatchure marks on the plat below.
2. If more than one lease is dedicated to the well, outline each and identify the ownership thereof (both as to working interest and royalty).
3. If more than one lease of different ownership is dedicated to the well, have the interest of all owners been consolidated by communitization, unitization, force-pooling, etc.?  
☐ Yes ☐ No If answer is "yes" type of consolidation \_\_\_\_\_  
If answer is "no" list the owners and tract descriptions which have actually been consolidated. (Use reverse side of this form if necessary.) \_\_\_\_\_  
No allowable will be assigned to the well until all interests have been consolidated (by communitization, unitization, forced-pooling, or otherwise) or until a non-standard unit, eliminating such interest, has been approved by the Division.



OPERATOR CERTIFICATION

I hereby certify that the information contained herein is true and complete to the best of my knowledge and belief.

Signature

Printed Name

Sherman E. Dugan

Position

Vice President

Company

Dugan Production Corp.

Date

6-16-89

SURVEYOR CERTIFICATION

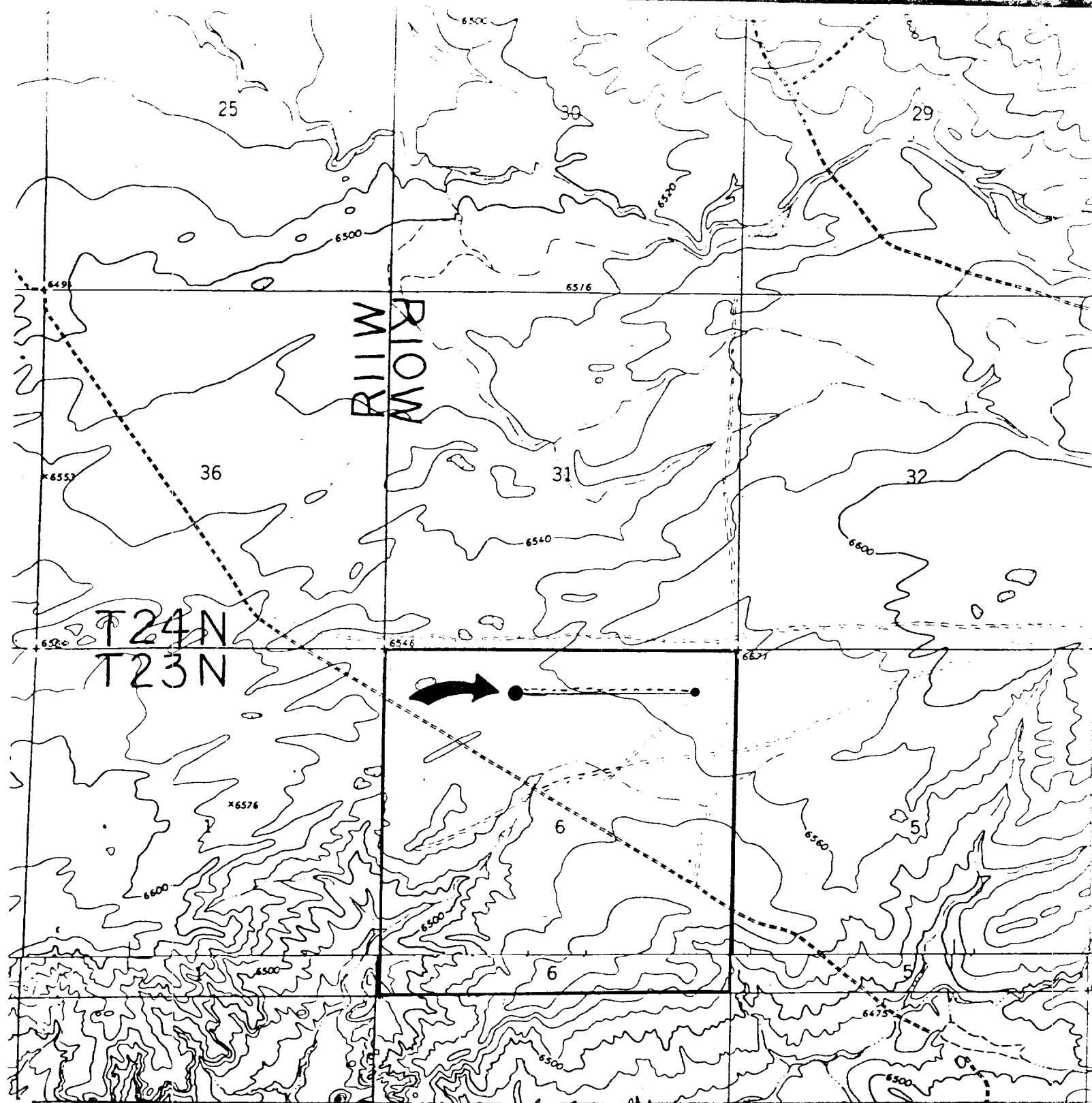
I hereby certify that the well location shown on this plat was plotted from field notes of actual surveys made by me or under my supervision, and that the same is true and correct to the best of my knowledge and belief.

Date Surveyed

March 6, 1989

Signature & Seal of  
Professional Surveyor

Edgar L. Risenhoover, L.S.  
Certification No. 5999  
Edgar L. Risenhoover, L.S.



Dugan Production Corp. - Calgary #3  
Existing Roads Exhibit E

Vicinity of nearest town or reference pt.  
 approx. 9½ miles SW of Blanco Trading Post

Type of surface dirt

Conditions good

Other

Reference map: USGS map: Huerfano Trading  
 Post SW 1966; Pueblo Bonito NW 1966

Planned Access Road(s) Exhibit E

Width 20' Maximum grades 2%

Drainage design as required

Cuts & Fills see Cut & Fill Diagram

Surfacing material none required

☒ Turnouts

☒ Culverts

☒ Gates

☒ Cattleguards

☒ Fence cuts

☒ Waterbars

new access &  
 fluids line to  
 existing system

Access road(s) do/do not cross (Fed/Ind land).