

Form 9-331 C  
1 Cramer (01/1983)  
1 Chorney  
1 Norcen  
1 Union Pacific  
6 BLM  
1 File  
BLM - Alb.  
BTA-Window Rock  
Alan Nez  
UNITED STATES  
DEPARTMENT OF THE INTERIOR  
GEOLOGICAL SURVEY

SUBMIT IN TRIPPLICATE\*  
(Other instructions on reverse side)

Form approved  
Budget Bureau No 42-R1425

# APPLICATION FOR PERMIT TO DRILL, DEEPEN, OR PLUG BACK

## 1a. TYPE OF WORK

DRILL ☒

DEEPEN ☐

PLUG BACK ☐

## b. TYPE OF WELL

OIL WELL ☒

GAS WELL ☐

OTHER

SINGLE ZONE ☒

MULTIPLE ZONE ☐

## 2. NAME OF OPERATOR

DUGAN PRODUCTION CORP.

## 3. ADDRESS OF OPERATOR

P.O. Box 420, Farmington, NM 87499

## 4. LOCATION OF WELL (Report location clearly and in accordance with State requirements.)

At surface  
660' FNL & 330' FEL

At proposed prod. zone

## 14. DISTANCE IN MILES AND DIRECTION FROM NEAREST TOWN OR POST OFFICE\*

approx. 9 1/2 miles southwest of Blanco Trading Post, NM

## 15. DISTANCE FROM PROPOSED\* LOCATION TO NEAREST PROPERTY OR LEASE LINE, FT.

(Also to nearest drilg. unit line, if any)

330'

## 16. NO. OF ACRES IN LEASE

640

## 17. NO. OF ACRES ASSIGNED TO THIS WELL

80.02

## 18. DISTANCE FROM PROPOSED LOCATION\* TO NEAREST WELL, DRILLING, COMPLETED, OR APPLIED FOR, ON THIS LEASE, FT.

2970' from proposed DPC Flo

## 19. PROPOSED DEPTH

4670'

## 20. ROTARY OR CABLE TOOLS

Rotary

## 21. ELEVATIONS (Show whether DF, RT, GR, etc.)

6555' GL JO #2

## 22. APPROX. DATE WORK WILL START\*

ASAP

23. This action is subject to technical and procedural review pursuant to 43 CFR 3185.4 and appeal pursuant to 43 CFR 3185.4. DRILLING OPERATIONS AUTHORIZED ARE

SIZE OF HOLE	SIZE OF CASING	WEIGHT PER FOOT	SETTING DEPTH	QUANTITY OF MATERIAL REQUIRED
12-1/4"	8-5/8"	24#	200'	159 cf circ. to surface
7-7/8"	4-1/2"	10.5#	4670'	1474 cf circ. to surface

Plan to drill a 12-1/4" hole and set 200' of 8-5/8" OD, 24#, J-55 surface casing; then plan to drill a 7-7/8" hole to total depth with gel-water-mud program to test Gallup formation. Plan to run IES and CDL logs. If determined productive, will run 4-1/2", 10.5#, J-55 casing, selectively perforate, frac, clean out after frac and complete well.

IN ABOVE SPACE DESCRIBE PROPOSED PROGRAM: If proposal is to deepen or plug back, give data on present productive zone and proposed new productive zone. If proposal is to drill or deepen directionally, give pertinent data on subsurface locations and measured and true vertical depths. Give blowout preventer program, if any.

24.

SIGNED

Sherman E. Dugan

TITLE

Vice President/  
Geologist

DATE 7-11-89

(This space for Federal or State office use)

PERMIT NO.

APPROVAL DATE

APPROVED BY

TITLE

CONDITIONS OF APPROVAL, IF ANY:

APPROVED  
AS AMENDED

SEP 13 1989

AREA MANAGER

NMOCD

\*See Instructions On Reverse Side

Submit to Appropriate  
District Office  
State Lease - 4 copies  
Fee Lease - 3 copies

State of New Mexico  
Energy, Minerals and Natural Resources Department

Form C-102  
Revised 1-1-89

OIL CONSERVATION DIVISION

DISTRICT I  
P.O. Box 1980, Hobbs, NM 88240

P.O. Box 2088  
Santa Fe, New Mexico 87504-2088

DISTRICT II  
P.O. Drawer DD, Artesia, NM 88210

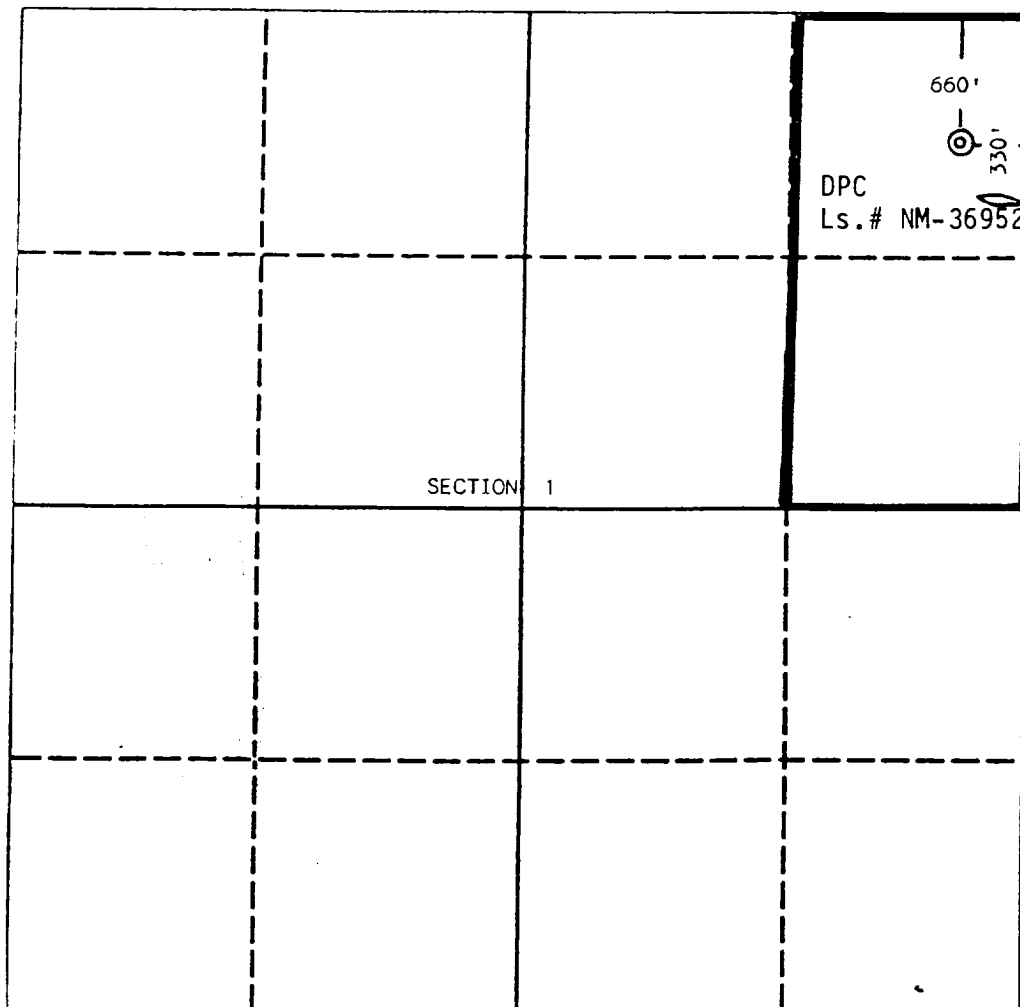
DISTRICT III  
1000 Rio Brazos Rd., Aztec, NM 87410

WELL LOCATION AND ACREAGE DEDICATION PLAT

All Distances must be from the outer boundaries of the section

Operator Dugan Production Corporation			Lease Flo-Jo		Well No. 1
Unit Letter A	Section 1	Township 23 North	Range 11 West	County San Juan	
Actual Footage Location of Well: 660 feet from the North line and 330 feet from the East line					
Ground level Elev. 6555	Producing Formation Gallup		Pool South Bisti Gallup Ext.	Dedicated Acreage: 80.62 Acres	

1. Outline the acreage dedicated to the subject well by colored pencil or hatchure marks on the plat below.
2. If more than one lease is dedicated to the well, outline each and identify the ownership thereof (both as to working interest and royalty).
3. If more than one lease of different ownership is dedicated to the well, have the interest of all owners been consolidated by communitization, unitization, force-pooling, etc.?  
☐ Yes ☐ No If answer is "yes" type of consolidation \_\_\_\_\_  
If answer is "no" list the owners and tract descriptions which have actually been consolidated. (Use reverse side of this form if necessary.)  
No allowable will be assigned to the well until all interests have been consolidated (by communitization, unitization, forced-pooling, or otherwise) or until a non-standard unit, eliminating such interest, has been approved by the Division.



OPERATOR CERTIFICATION

I hereby certify that the information contained herein is true and complete to the best of my knowledge and belief.

Signature

Printed Name  
Sherman E. Dugan

Position  
Vice-President

Company  
Dugan Production Corp.

Date  
7-11-89

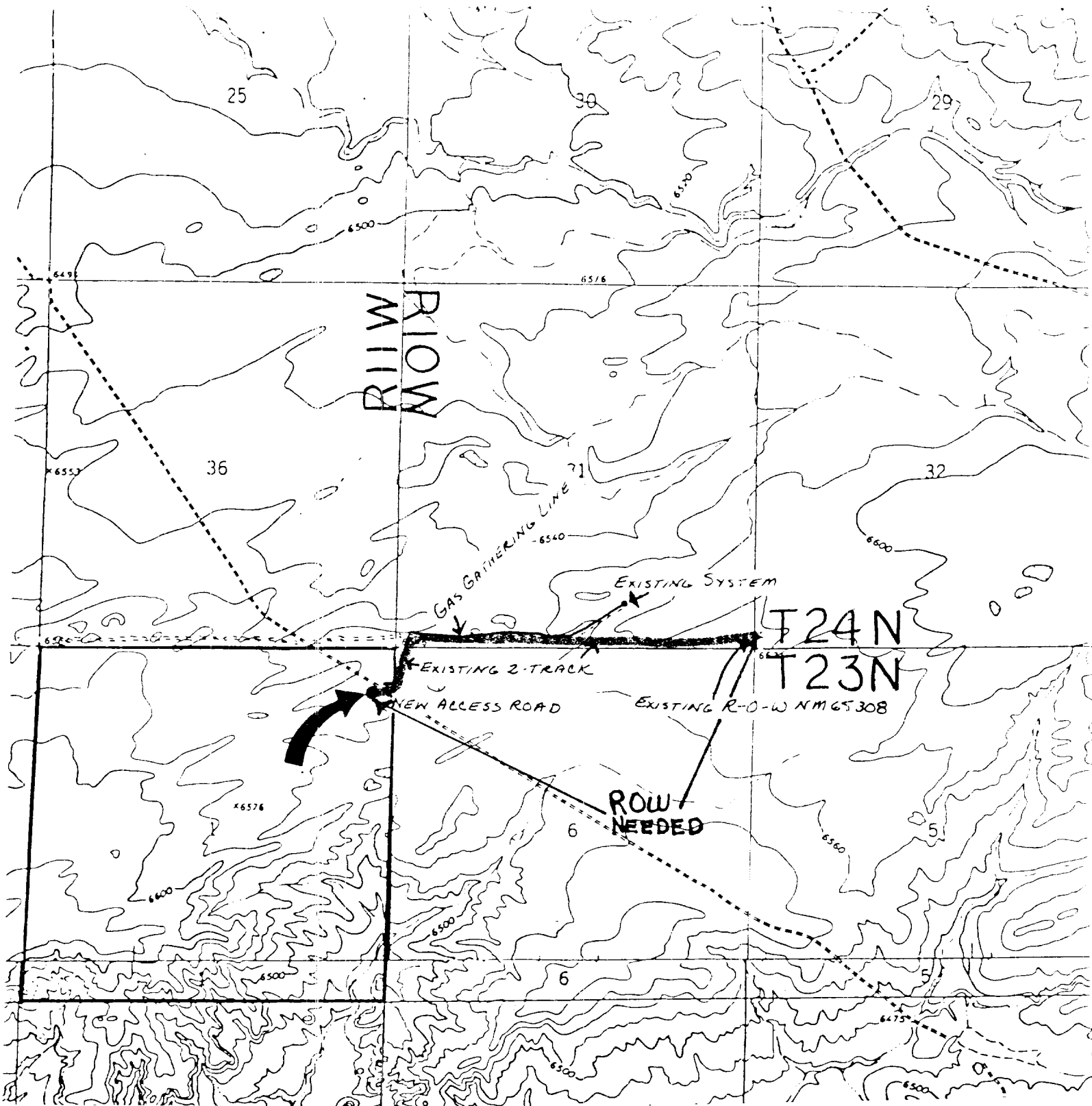
SURVEYOR CERTIFICATION

I hereby certify that the well location shown on this plat was plotted from field notes of actual surveys made by me or under my supervision, and that the same is true and correct to the best of my knowledge and belief.

Date Surveyed  
June 20, 1989

Signature & Seal of  
Professional Surveyor

Edgar L. Risenbrooke  
NEW MEXICO  
5979  
Edgar L. Risenbrooke, S.S.



Dugan Production Corp's F1o Jo #1  
EXHIBIT R

T23N, R11W - Sec. 1 NE NE/4  
 T23N, R10W - Sec. 6 NW NW NW/4  
 T24N, R10W - Sec. 31 S/2 S/2  
 Parallels southern section line 31  
 Length = 150' new ; 5600 upgraded