

5 BLM  
1 FileUNITED STATES  
DEPARTMENT OF THE INTERIOR  
BUREAU OF LAND MANAGEMENT

## APPLICATION FOR PERMIT TO DRILL OR DEEPEN

## 1a. TYPE OF WORK

DRILL ☒98 JUN 30 PM 4:24  
DEEPEN ☐

## b. TYPE OF WELL

OIL  
WELL ☐GAS  
WELL ☒

OTHER

070 FARMINGTON, NM

SINGLE  
ZONE ☒MULTIPLE  
ZONE ☐

## 2. NAME OF OPERATOR

Dugan Production Corp. 6515

## 3. ADDRESS AND TELEPHONE NO.

P.O. Box 420, Farmington, NM 87499

## 4. LOCATION OF WELL (Report location clearly and in accordance with any State requirements.)\*

At surface

1850' FNL & 790' FEL (SE/4 NE/4)  
At proposed prod. zone

## 14. DISTANCE IN MILES AND DIRECTION FROM NEAREST TOWN OR POST OFFICE\*

approx. 7 miles SW 44 Store, NM

## 15. DISTANCE FROM PROPOSED\*

LOCATION TO NEAREST  
PROPERTY OR LEASE LINE, FT.  
(Also to nearest drlg. unit line, if any)

790'

## 16. NO. OF ACRES IN LEASE

480

17. NO. OF ACRES ASSIGNED  
TO THIS WELL

160

18. DISTANCE FROM PROPOSED LOCATION\*  
TO NEAREST WELL, DRILLING, COMPLETED,  
OR APPLIED FOR, ON THIS LEASE, FT.

none

## 19. PROPOSED DEPTH

1305'

## 20. ROTARY OR CABLE TOOLS

Rotary

## 21. ELEVATIONS (Show whether DF, RT, GR, etc.)

6585' GL (est)

## 22. APPROX. DATE WORK WILL START\*

ASAP

## 23. PROPOSED CASING AND CEMENTING PROGRAM

This action is subject to technical and  
procedural review and approval by the BLM and the  
and approval pursuant to 43 CFR 3165.4.

SIZE OF HOLE	GRADE, SIZE OF CASING	WEIGHT PER FOOT	SETTING DEPTH	QUANTITY OF CEMENT
9-7/8"	7"	20#	120'	53 cf (45 sx) circ. to surface
5"	2-7/8"	6.5#	1305'	183 cf (155 sx) circ. to surface

Plan to drill a 9-7/8" hole and set 120' of 7" OD, 20#, J-55 surface casing; then plan to drill a 5" hole to total depth with gel-water-mud program to test the Chacra formation. Plan to run IES log. If determined to be productive, will run 2-7/8" OD, 6.5# casing, cemented to surface. Will selectively perforate, frac, and clean out after frac.

RECEIVED  
JUL 22 1993OIL CON. DIV.  
DIST. 3

IN ABOVE SPACE DESCRIBE PROPOSED PROGRAM: If proposal is to deepen, give data on present productive zone and proposed new productive zone. If proposal is to drill or deepen directionally, give pertinent data on subsurface locations and measured and true vertical depths. Give blowout preventer program, if any.

24.

SIGNED

Sherman B. Dugan

TITLE Vice-President

DATE 6/29/93

(This space for Federal or State office use)

PERMIT NO.

APPROVAL DATE

APPROVED

AS AMENDED

Application approval does not warrant or certify that the applicant holds legal or equitable title to those rights in the subject lease which would entitle the applicant to the production thereon.

CONDITIONS OF APPROVAL, IF ANY:

NMCCD

JUL 20 1993

APPROVED BY

TITLE

DISTRICT MANAGER

\*See Instructions On Reverse Side

Title 18 U.S.C. Section 1001, makes it a crime for any person knowingly and willfully to make to any department or agency of the United States any false, fictitious or fraudulent statements or representations as to any matter within its jurisdiction.

Submit to Appropriate  
District Office  
State Lease - 4 copies  
Fee Lease - 3 copies

State of New Mexico  
Energy, Minerals and Natural Resources Department

Form C-102  
Revised 1-1-89

OIL CONSERVATION DIVISION

P.O. Box 2088  
Santa Fe, New Mexico 87504-2088

DISTRICT I  
P.O. Box 1980, Hobbs, NM 88240

DISTRICT II  
P.O. Drawer DD, Artesia, NM 88210

DISTRICT III  
1000 Rio Brazos Rd., Aztec, NM 87410

WELL LOCATION AND ACREAGE DEDICATION PLAT  
All Distances must be from the outer boundaries of the section

Operator Dugan Production Corporation			Lease Morrison		Well No. 1
Unit Letter H	Section 13	Township 22 North	Range 9 West	County NMPM San Juan	

Actual Footage Location of Well:

1850 feet from the North line and		790 feet from the East line	
Ground level Elev. 6585 Est.	Producing Formation Chacra	Pool Undesignated	Dedicated Acreage: 160 Acres

- Outline the acreage dedicated to the subject well by colored pencil or hatchure marks on the plat below.
- If more than one lease is dedicated to the well, outline each and identify the ownership thereof (both as to working interest and royalty).
- If more than one lease of different ownership is dedicated to the well, have the interest of all owners been consolidated by communitization, unitization, force-pooling, etc.?  
☐ Yes ☐ No If answer is "yes" type of consolidation \_\_\_\_\_  
If answer is "no" list the owners and tract descriptions which have actually been consolidated. (Use reverse side of this form if necessary.)  
No allowable will be assigned to the well until all interests have been consolidated (by communitization, unitization, forced-pooling, or otherwise) or until a non-standard unit, eliminating such interest, has been approved by the Division.

Dugan Prod. NM 90477	
1850'	
790'	
Section 13	

**RECEIVED**  
JUL 22 1993  
OIL CON. DIV.  
DIST. 3

OPERATOR CERTIFICATION

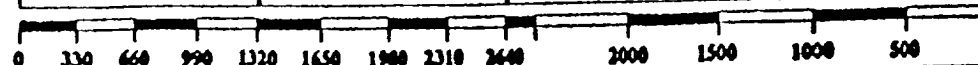
I hereby certify that the information contained herein is true and complete to the best of my knowledge and belief.

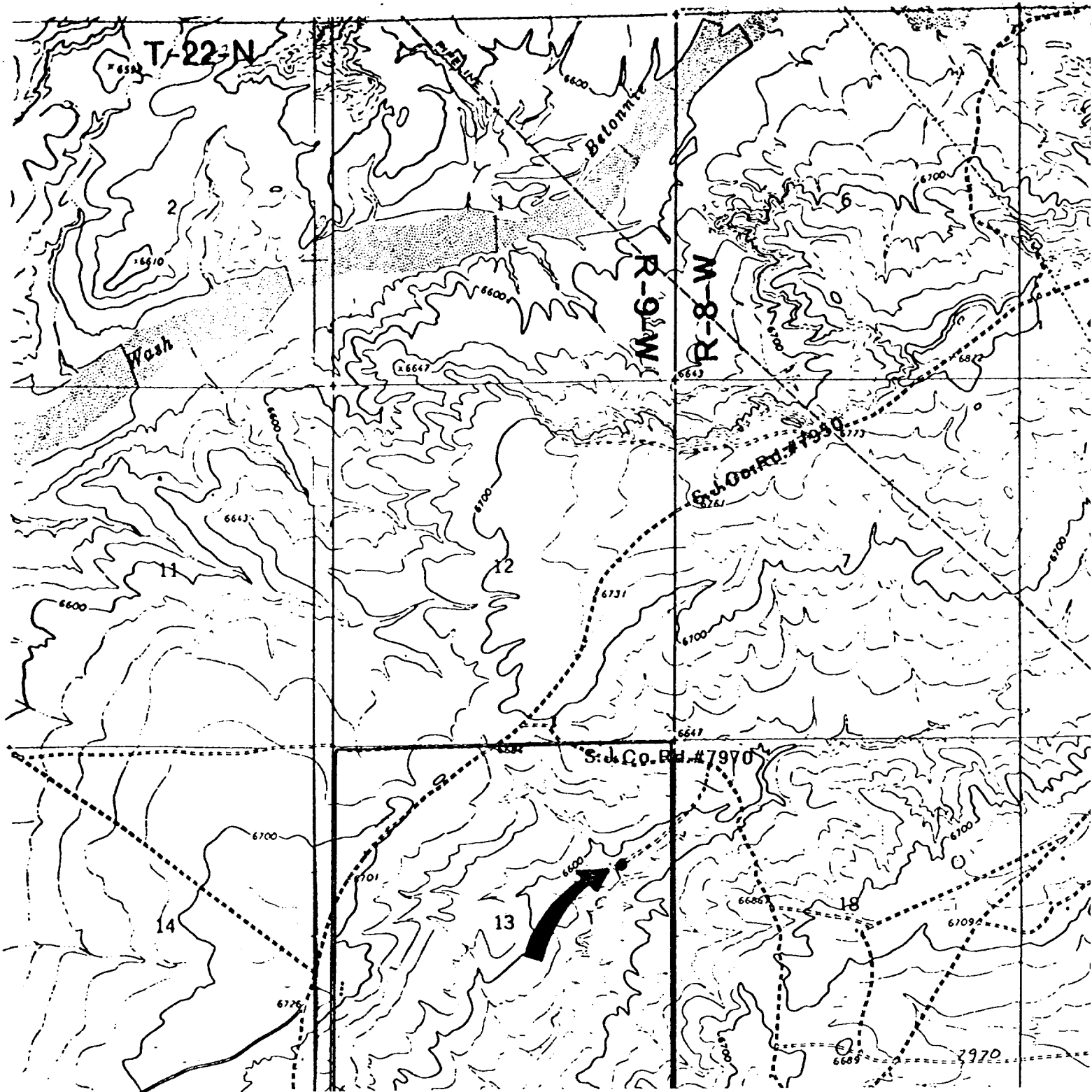
Signature  
*Sherman E. Dugan*  
Printed Name  
Sherman E. Dugan  
Position  
Vice-President  
Company  
Dugan Production Corp.  
Date  
6/29/93

SURVEYOR CERTIFICATION

I hereby certify that the well location shown on this plat was plotted from field notes of actual surveys made by me or under my supervision, and that the same is true and correct to the best of my knowledge and belief.

Date Surveyed  
June 17, 1993  
Signature & Seal of Professional Surveyor  
*Edgar L. Risenhoover*  
Edgar L. Risenhoover  
5879  
NEW MEXICO  
5879  
REGISTERED LAND SURVEYOR





Dugan Production Corp. - Morrison #1  
Existing Roads Exhibit E

Vicinity of nearest town or reference pt.  
 approx. 7 miles SW of 44 Store, NM

Type of surface dirt

Conditions good

Other \_\_\_\_\_

Reference map: USGS map

Lybrook NW, NM

Planned Access Road(s)

Exhibit E

Width 20' Maximum grades 3%

Drainage design as needed

Cuts & Fills as needed

Surfacing material none

☒ Turnouts ☒ Waterbars

☒ Culverts ☒ Gates

☒ Cattleguards

☒ Fence cuts

Access road(s) do ☒ not cross ☒ Fed/Ind lan