

UNITED STATES
DEPARTMENT OF THE INTERIOR
BUREAU OF LAND MANAGEMENT

APPLICATION FOR PERMIT TO DRILL OR DEEPEN

1A. TYPE OF WORK

DRILL ☒

DEEPEN ☐

B. TYPE OF WELL

OIL
WELL ☐

GAS
WELL ☒

OTHER ☐

SINGLE
ZONE ☒

MULTIPLE
ZONE ☐

2. NAME OF OPERATOR

Dugan Production Corp. 6515

3. ADDRESS AND TELEPHONE NO.

P.O. Box 420, Farmington, NM 87499

325-1821

4. LOCATION OF WELL (Report location clearly and in accordance with any State requirements.)*
At surface

1850' FSL & 1550' FEL (NW/4 SE/4)
At proposed prod. zone

14. DISTANCE IN MILES AND DIRECTION FROM NEAREST TOWN OR POST OFFICE*

approx. 11 miles SW of Blanco Trading Post, NM

15. DISTANCE FROM PROPOSED*
LOCATION TO NEAREST
PROPERTY OR LEASE LINE, FT.

(Also to nearest drlg. unit line, if any)

790'

16. NO. OF ACRES IN LEASE

1200

17. NO. OF ACRES ASSIGNED
TO THIS WELL

160

18. DISTANCE FROM PROPOSED LOCATION*
TO NEAREST WELL, DRILLING, COMPLETED,
OR APPLIED FOR, ON THIS LEASE, FT.

N/A

19. PROPOSED DEPTH

1600'

20. ROTARY OR CABLE TOOLS

Rotary

21. ELEVATIONS (Show whether DF, RT, GR, etc.)

est. 6335' GL

22. APPROX. DATE WORK WILL START*

ASAP

23. PROPOSED CASING AND CEMENTING PROGRAM

SIZE OF HOLE	GRADE, SIZE OF CASING	WEIGHT PER FOOT	SETTING DEPTH	GENERAL QUANTITY OF CEMENT
9-7/8"	7"	20#	120'	53 cu.ft. (45 sx) circ. to surf.
6-1/4"	2-7/8"	6.5#	1600'	407 cu.ft. (345 sx) circ. to surf.

Plan to drill a 9-7/8" hole and set 120' of 7" OD, 20#, J-55 surface casing;
then plan to drill a 6 1/4" hole to total depth with gel-water-mud program to
test Chacra formation. Plan to run IES and CDL logs. If determined productive,
will run 2-7/8", 6.5#, J-55 casing, selectively perforate, frac, clean out after
frac and complete well.

RECEIVED
DEC 23 1993
OIL CON. DIV.
DIST. 3

IN ABOVE SPACE DESCRIBE PROPOSED PROGRAM: If proposal is to deepen, give data on present productive zone and proposed new productive zone. If proposal is to drill or
deepen directionally, give pertinent data on subsurface locations and measured and true vertical depths. Give blowout preventer program, if any.

SIGNED Sherman Dugan TITLE Vice-President DATE 12/9/93

(This space for Federal or State office use)

PERMIT NO.

APPROVAL DATE

Application approval does not warrant or certify that the applicant holds legal or equitable title to those rights in the subject lease which would enable the applicant to conduct operations thereon.
CONDITIONS OF APPROVAL, IF ANY:

APPROVED BY

TITLE

*See Instructions On Reverse Side

APPROVED
AS AMENDED

DEC 21 1993
DISTRICT MANAGER

Title 18 U.S.C. Section 1001, makes it a crime for any person knowingly and willfully to make to any department or agency of the
United States any false, fictitious or fraudulent statements or representations as to any matter within its jurisdiction.

Submit to Appropriate
District Office
State Lease - 4 copies
Fee Lease - 3 copies

State of New Mexico
Energy, Minerals and Natural Resources Department

Form C-102
Revised 1-1-89

OIL CONSERVATION DIVISION

P.O. Box 2088

Santa Fe, New Mexico 87504-2088

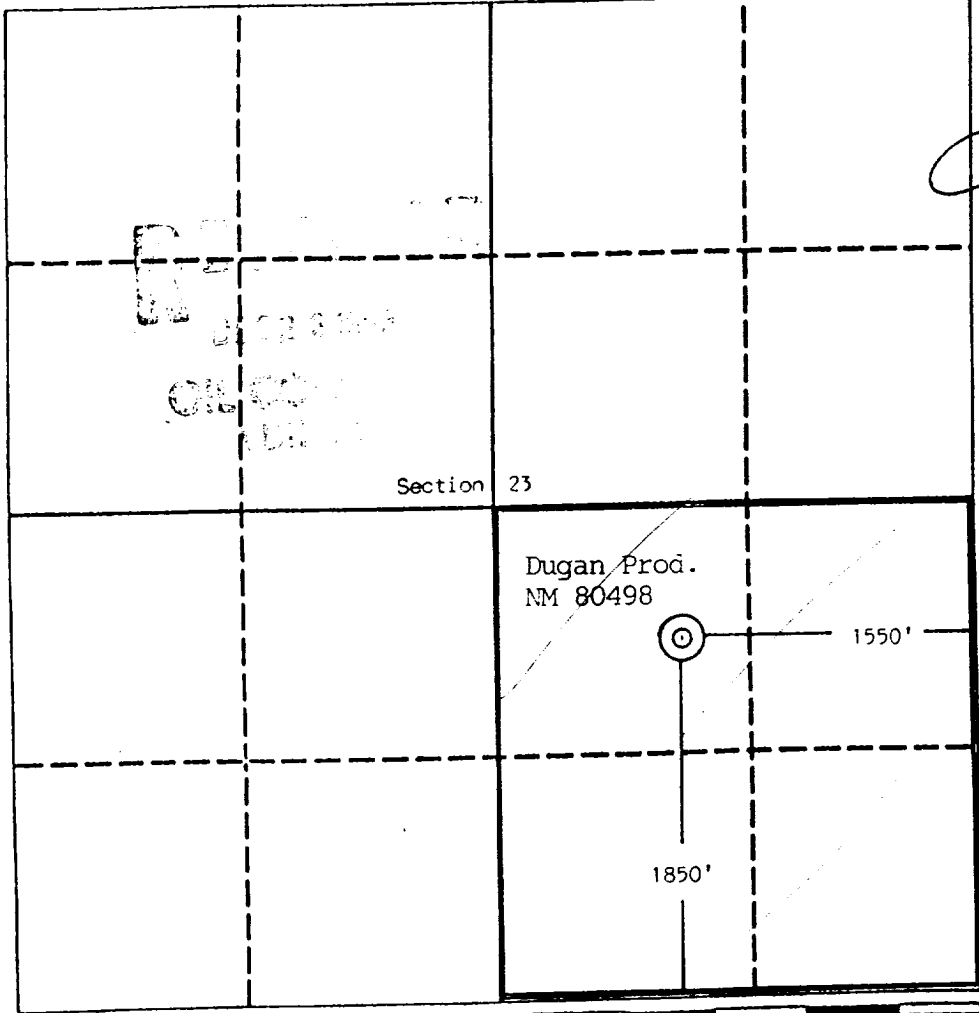
DISTRICT I
P.O. Box 1980, Hobbs, NM 88240

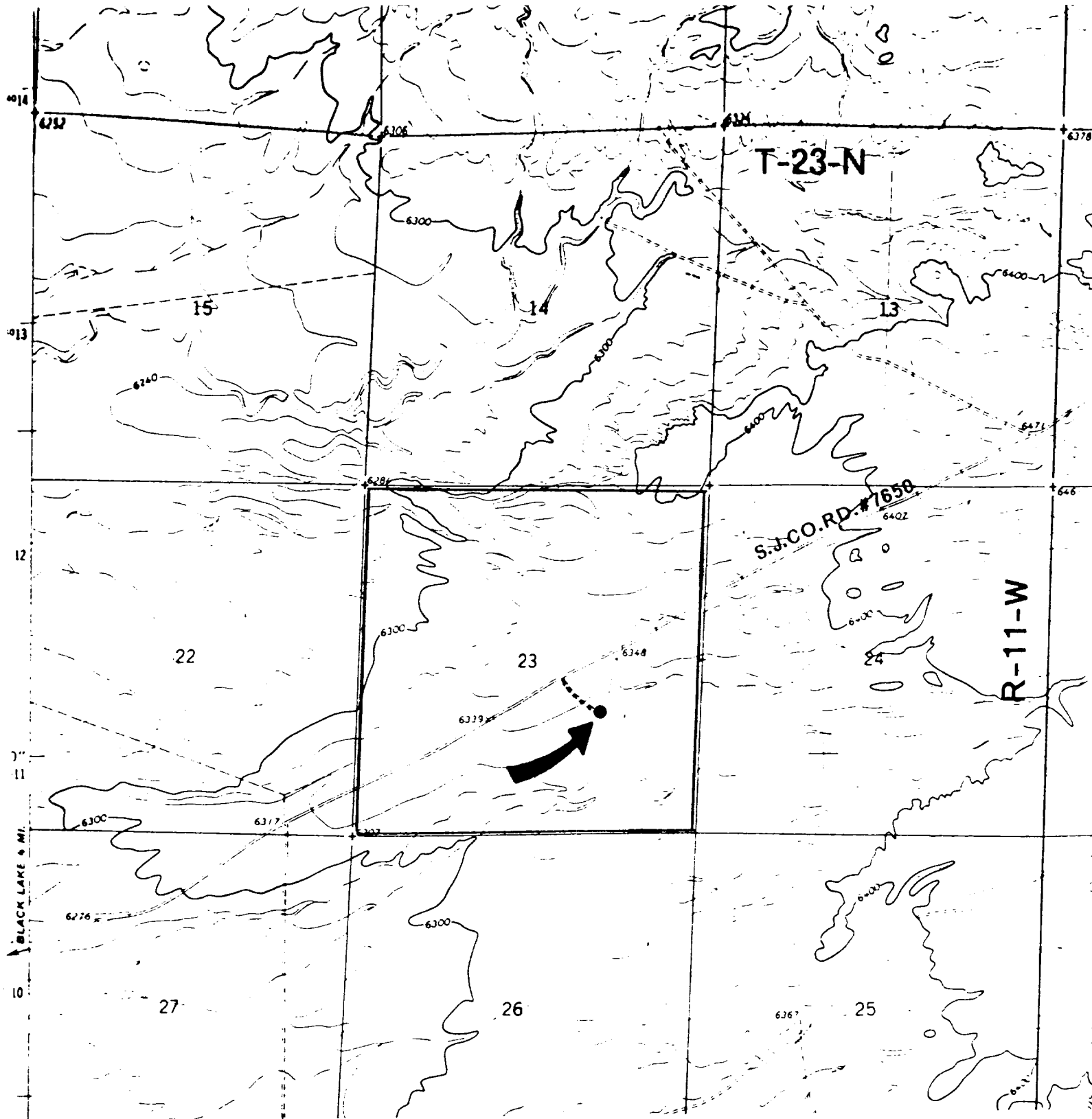
DISTRICT II
P.O. Drawer DD, Artesia, NM 88210

DISTRICT III
1000 Rio Brazos Rd., Aztec, NM 87410

WELL LOCATION AND ACREAGE DEDICATION PLAT

All Distances must be from the outer boundaries of the section

Operator Dugan Production Corporation		Lease Pierre		Well No. 2
Unit Letter J	Section 23	Township 23 North	Range 11 West	County NMPM San Juan
Actual Footage Location of Well: 1850 feet from the South line and 1550 feet from the East line				
Ground level Elev. 6335 Est.	Producing Formation Chacra	Pool WILDCAT BEST Undesignated	Dedicated Acreage: 160 Acres	
<p>1. Outline the acreage dedicated to the subject well by colored pencil or hectare marks on the plat below.</p> <p>2. If more than one lease is dedicated to the well, outline each and identify the ownership thereof (both as to working interest and royalty).</p> <p>3. If more than one lease of different ownership is dedicated to the well, have the interest of all owners been consolidated by communitization, unitization, force-pooling, etc.? <input type="checkbox"/> Yes <input type="checkbox"/> No If answer is "yes" type of consolidation _____ If answer is "no" list the owners and tract descriptions which have actually been consolidated. (Use reverse side of this form if necessary.) _____ No allowable will be assigned to the well until all interests have been consolidated (by communitization, unitization, forced-pooling, or otherwise) or until a non-standard unit, eliminating such interest, has been approved by the Division.</p>				
			OPERATOR CERTIFICATION I hereby certify that the information contained herein is true and complete to the best of my knowledge and belief. Signature: <i>Sherman E. Dugan</i> Printed Name: Sherman E. Dugan Position: Vice-President Company: Dugan Production Corp. Date: 12/9/93	
			SURVEYOR CERTIFICATION I hereby certify that the well location shown on this plat was plotted from field notes of actual surveys made by me or under my supervision, and that the same is true and correct to the best of my knowledge and belief. Date Surveyed: December 1, 1993 Signature & Seal of Professional Surveyor: <i>Edgar L. Risenhoover</i> Certificate No. 5979 Edgar L. Risenhoover, P.S.	



Dugan Production Corp. - Pierre #2 Exhibit E

Vicinity of nearest town or reference pt.
approx. 11 miles SW Blanco Trading Post,
 NM

Type of surface dirt

Conditions good

Other _____

Reference map: USGS map

Pueblo Bonito, NW, NM 1966

Planned Access Road(s)

Exhibit E

Width 14' Maximum grades 3%

Drainage design as required

Cuts & Fills see diagram

Surfacing material none

↳ Turnouts

↳ Culverts

↳ Gates

↳ Cattleguards

↳ Fence cuts

↳ Waterbars

Access road(s) do/do not cross Fed/Ind land.