

UNITED STATES
DEPARTMENT OF THE INTERIOR
BUREAU OF LAND MANAGEMENT

APPLICATION FOR PERMIT TO DRILL OR DEEPEN

1a. TYPE OF WORK

DRILL ☒

DEEPEN ☐

b. TYPE OF WELL

OIL WELL ☒

GAS WELL ☐

OTHER

SINGLE ZONE ☒

MULTIPLE ZONE ☐

2. NAME OF OPERATOR

DUGAN PRODUCTION CORP. 6515

325-1821

3. ADDRESS AND TELEPHONE NO.

P.O. Box 420, Farmington, NM 87499

4. LOCATION OF WELL (Report location clearly and in accordance with any State requirements.)

At surface

725' FSL & 1650' FEL (SW/4 SE/4)

At proposed prod. zone

14. DISTANCE IN MILES AND DIRECTION FROM NEAREST TOWN OR POST OFFICE*

approx. 9 1/2 miles SW of Blanco Trading Post

10. DISTANCE FROM PROPOSED* LOCATION TO NEAREST PROPERTY OR LEASE LINE, FT.

(Also to nearest drig. unit line, if any)

725'

16. NO. OF ACRES IN LEASE

1760.28

18. DISTANCE FROM PROPOSED* LOCATION TO NEAREST WELL, DRILLING, COMPLETED, OR APPLIED FOR, ON THIS LEASE, FT.

approx. 1645' from DPC's

19. PROPOSED DEPTH

4570'

21. ELEVATIONS (Show whether DF, RT, etc.)

GL 6520' (est)

23.

PROPOSED CASING AND CEMENTING PROGRAM

SIZE OF HOLE	GRADE, SIZE OF CASING	WEIGHT PER FOOT	SETTING DEPTH	"GENERAL REQUIREMENTS"
12-1/4"	8-5/8"	24#	200'	159 cf circ. to surface
7-7/8"	4-1/2"	10.5#	4570'	1452 cf circ. to surface

Plan to drill a 12-1/4" hole and set 200' of 8-5/8" OD, 24#, J-55 surface casing; then plan to drill a 7-7/8" hole to total depth with gel-water-mud program to test the Gallup formation. Plan to run IES and CDL logs. If determined productive, will run 4-1/2", 10.5#, J-55 casing with stage tool, selectively perforate, frac, clean out after frac and complete well.

RECEIVED
JUN 21 1994
OIL CON. DIV.
DIST. 3

IN ABOVE SPACE DESCRIBE PROPOSED PROGRAM: If proposal is to deepen, give data on present productive zone and proposed new productive zone. If proposal is to drill or deepen directionally, give pertinent data on subsurface locations and measured and true vertical depths. Give blowout preventer program, if any.

24.

SIGNED

TITLE Vice-President

DATE 4/25/94

(This space for Federal or State office use)

PERMIT NO.

APPROVAL DATE

APPROVED
AS AMENDED

Application approval does not warrant or certify that the applicant holds legal or equitable title to those rights in the subject lease which would entitle the applicant to conduct operations thereon.
CONDITIONS OF APPROVAL, IF ANY:

APPROVED BY

TITLE

DISTRICT MANAGER

*See Instructions On Reverse Side

District I
PO Box 1900, Hobbs, NM 88241-1900
District II
PO Drawer DD, Artesia, NM 88211-0719
District III
1000 Rio Bravo Rd., Aztec, NM 87410
District IV
PO Box 2088, Santa Fe, NM 87504-2088

State of New Mexico
Energy, Minerals & Natural Resources Department

OIL CONSERVATION DIVISION
PO Box 2088
Santa Fe, NM 87504-2088

Form C-102
Revised February 21, 1994
Instructions on back
Submit to Appropriate District Office
State Lease - 4 Copies
Fee Lease - 3 Copies

☐ AMENDED REPORT

WELL LOCATION AND ACREAGE DEDICATION PLAT

API Number		Pool Code	Pool Name
		05680	Bisti Gallup South
Property Code	Property Name		Well Number
003684	Flo Jo		5
OGRID No.	Operator Name		Elevation
006515	Dugan Production Corp.		6520' Est. GL

Surface Location

UL or lot no.	Section	Township	Range	Lot Ida	Feet from the	North/South line	Feet from the	East/West line	County
0	1	23N	11W		725	South	1650	East	San Juan

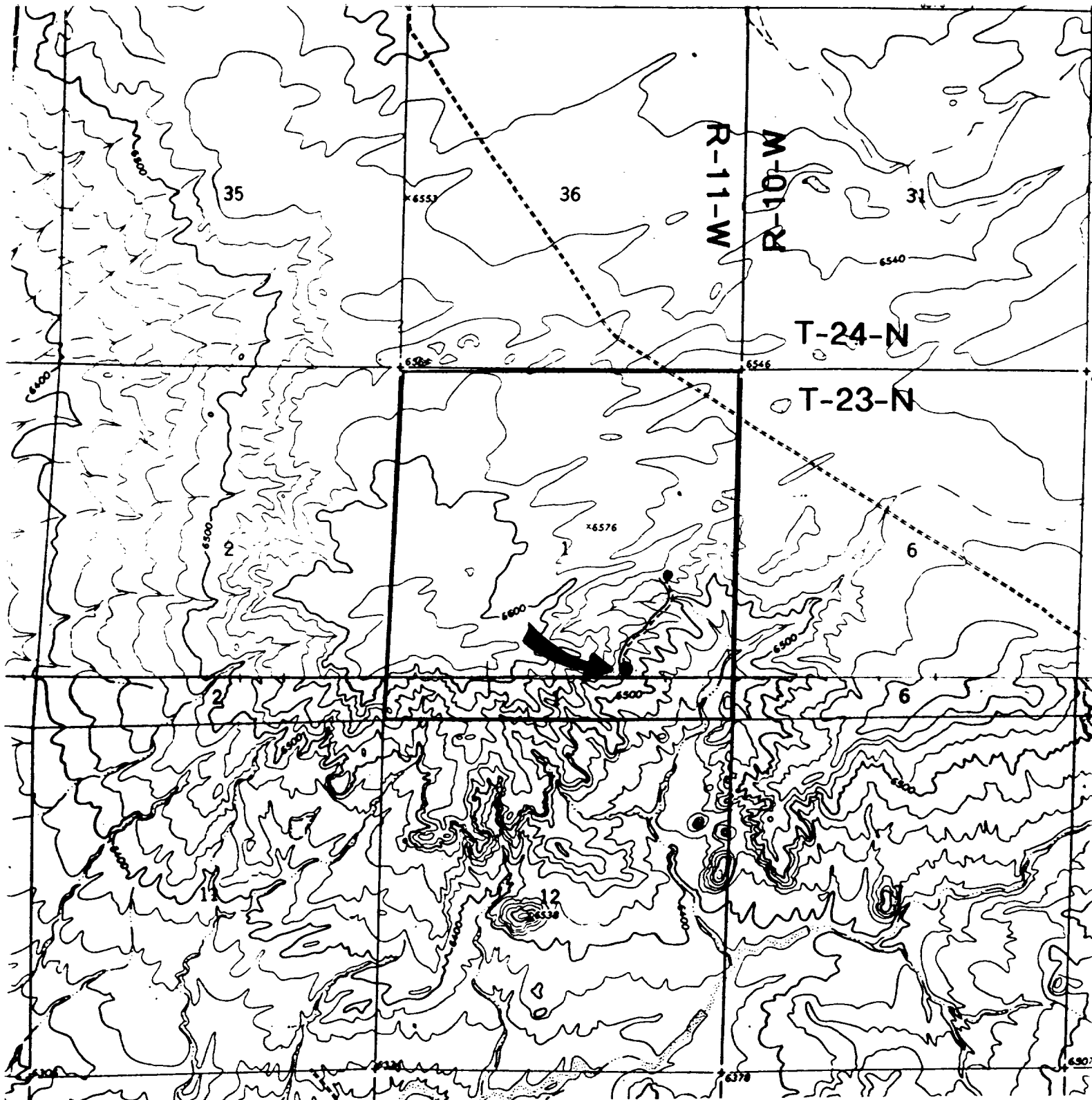
Bottom Hole Location If Different From Surface

UL or lot no.	Section	Township	Range	Lot Ida	Feet from the	North/South line	Feet from the	East/West line	County

Dedicated Acres	Joint or Infill	Consolidation Code	Order No.
80			

NO ALLOWABLE WILL BE ASSIGNED TO THIS COMPLETION UNTIL ALL INTERESTS HAVE BEEN CONSOLIDATED
OR A NON-STANDARD UNIT HAS BEEN APPROVED BY THE DIVISION

16			17 OPERATOR CERTIFICATION	
			<p>I hereby certify that the information contained herein is true and complete to the best of my knowledge and belief</p> <p><i>Sherman E. Dugan</i> Signature Sherman E. Dugan Printed Name Vice-President Title April 25, 1994 Date</p>	
	Section 1		18 SURVEYOR CERTIFICATION	
	<p>Dugan Prod. NM 36952</p> <p>725' — 1650'</p>		<p>I hereby certify that the well location shown on this plat was plotted from field notes of actual surveys made by me or under my supervision, and that the same is true and correct to the best of my belief.</p> <p>MARCH 15, 1994 Date of Survey Signature and Seal of Professional Surveyor Certificate Number 0099</p>	



Dugan Production Corp. - Flo Jo #5

Existing Roads

Exhibit E

Vicinity of nearest town or reference pt.
approx. 9½ miles SW of Blanco Trading Post

Type of surface dirt

Conditions good

Other _____

Reference map: USGS map Huerfano Trading Post SW 1966; Pueblo Bonito NW 1966

Planned Access Road(s)

Exhibit E

Width 20' Maximum grades 7%

Drainage design as required

Cuts & Fills see diagram

Surfacing material none

↘ Turnouts ↘ Waterbars

▢ Culverts ↘

⊠ Gates ↘ New road & fluids line

≡ Cattleguards

▤ Fence cuts

Access road(s) (do) do not cross (Fed) Ind land.

Buried fluids line will parallel road to tank