

NEW MEXICO OIL CONSERVATION COMMISSION
Santa Fe, New Mexico

Form C-101
Revised (12/1/55)

NOTICE OF INTENTION TO DRILL

Notice must be given to the District Office of the Oil Conservation Commission and approval obtained before drilling or recompletion begins. If changes in the proposed plan are considered advisable, a copy of this notice showing such changes will be returned to the sender. Submit this notice in QUINTUPLICATE. One copy will be returned following approval. See additional instructions in Rules and Regulations of the Commission. If State Land submit 6 Copies Attach Form C-128 in triplicate to first 3 copies of form C-101

1645 Court Place, Denver, Colorado
(Place)

September 23, 1960
(Date)

OIL CONSERVATION COMMISSION
SANTA FE, NEW MEXICO

Gentlemen:

You are hereby notified that it is our intention to commence the Drilling of a well to be known as

Compass Exploration, Inc.

(Company or Operator)

State

(Lease)

Well No. 2-16

L

(Unit)

The well is

located 660 feet from the West line and 1850 feet from the

South

Line of Section 16, T. 24 N, R. 7 W, NMPM.

(GIVE LOCATION FROM SECTION LINE)

Escrito-Gallup

Pool, Rio Arriba

County

If State Land the Oil and Gas Lease is No. E-6833

If patented land the owner is

Address

We propose to drill well with drilling equipment as follows: Rotary tools

The status of plugging bond is Blanket plugging bond on file with
Commission's office, Santa Fe, New Mexico

Drilling Contractor

We intend to complete this well in the Gallup
formation at an approximate depth of 6150

feet.

CASING PROGRAM

We propose to use the following strings of Casing and to cement them as indicated:

Size of Hole	Size of Casing	Weight per Foot	New or Second Hand	Depth	Seals Cement
12-1/4"	8-5/8"	24#	New	200'	200
7-7/8"	4-1/2"	9.5 and 11.6	New	6150'	200

If changes in the above plans become advisable we will notify you immediately.

ADDITIONAL INFORMATION (If recompletion give full details of proposed plan of work.)

This notice is filed as a change of location, and is in lieu of Form C-101 approved by your office August 1, 1960.

Approved
Except as follows:

Sincerely yours,

COMPASS EXPLORATION, INC.
(Company or Operator)

By

Position Chief Geologist

Send Communications regarding well to

Name Compass Exploration, Inc.

By

OIL CONSERVATION COMMISSION

NEW MEXICO OIL CONSERVATION COMMISSION
Well Location and Acreage Dedication Plat

Section A.

Date September 23, 1960

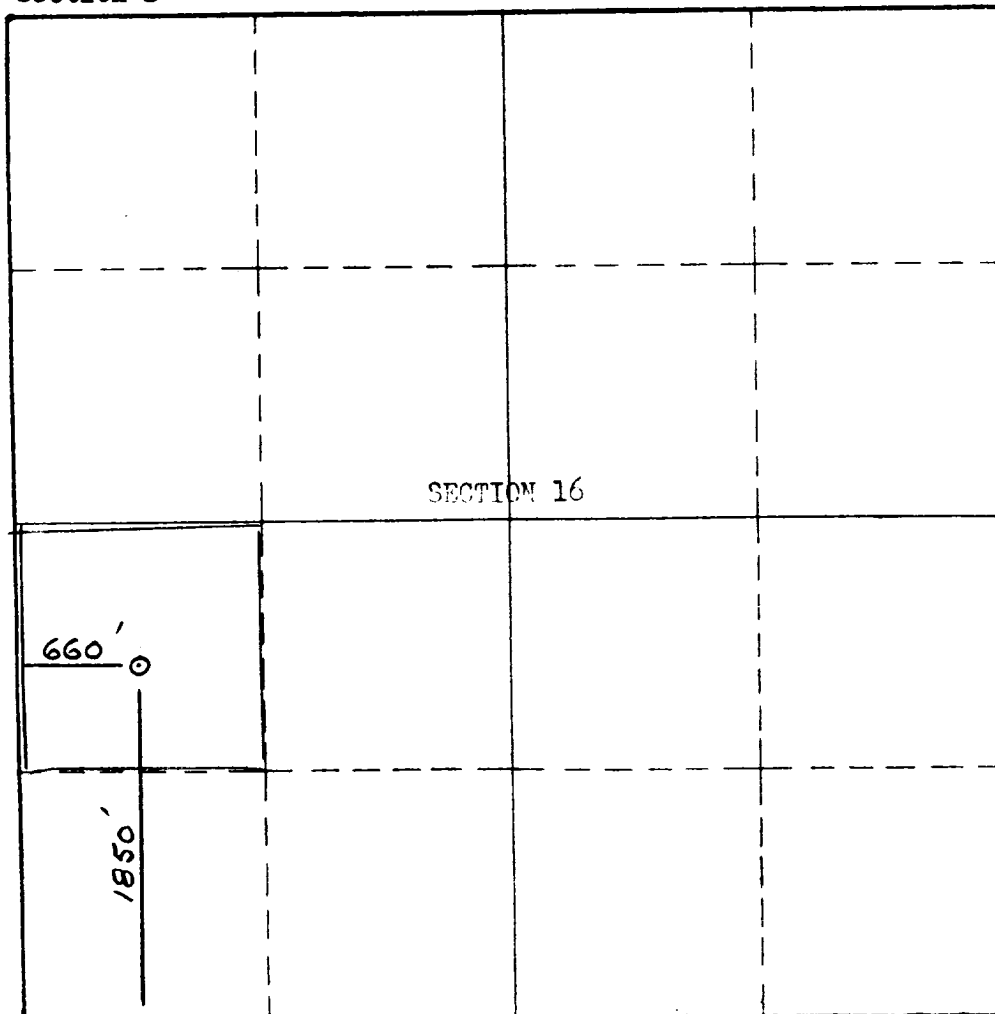
Operator COMPASS EXPLORATION INC. Lease STATE
Well No. 2-16 Unit Letter L Section 16 Township 24 N Range 7 W NEEN
Located 1850 Feet From south Line, 660 Feet From west Line
County Rio Arriba G. L. Elevation 7076 Dedicated Acreage 40 Acres
Name of Producing Formation Gallup Pool Escrito-Gallup

1. Is the Operator the only owner* in the dedicated acreage outlined on the plat below?
Yes ☒ No ☐.
2. If the answer to question one is "no," have the interests of all the owners been consolidated by communitization agreement or otherwise? Yes ☐ No ☐. If answer is "yes," Type of Consolidation _____
3. If the answer to question two is "no," list all the owners and their respective interests below:

Owner

Land Description

Section B



0 330 660 990 1320 1650 1980 2310 2640 2970 3300 3630 3960 4290 4620 4950 5280 5610 5940 6270 6600



This is to certify that the information in Section A above is true and complete to the best of my knowledge and belief.

Compass Exploration, Inc.

(Operator)

R. Farrelly

(Representative)

**1645 Court Place
Denver 2, Colorado**

Address

This is to certify that the well location shown on the plat in Section B was plotted from field notes of actual surveys made by me or under my supervision and that the same is true and correct to the best of my knowledge and belief.

Date Surveyed August 23, 1960

Stephens
Registered Professional
Engineer and Land Surveyor.

Certificate No. 803

