

NEW MEXICO  
OIL CONSERVATION COMMISSION

Form C-128

Well Location and/or Gas Proration Plat

Date April 16, 1956

Operator Magnolia Petroleum Company Lease W. O. Hughes

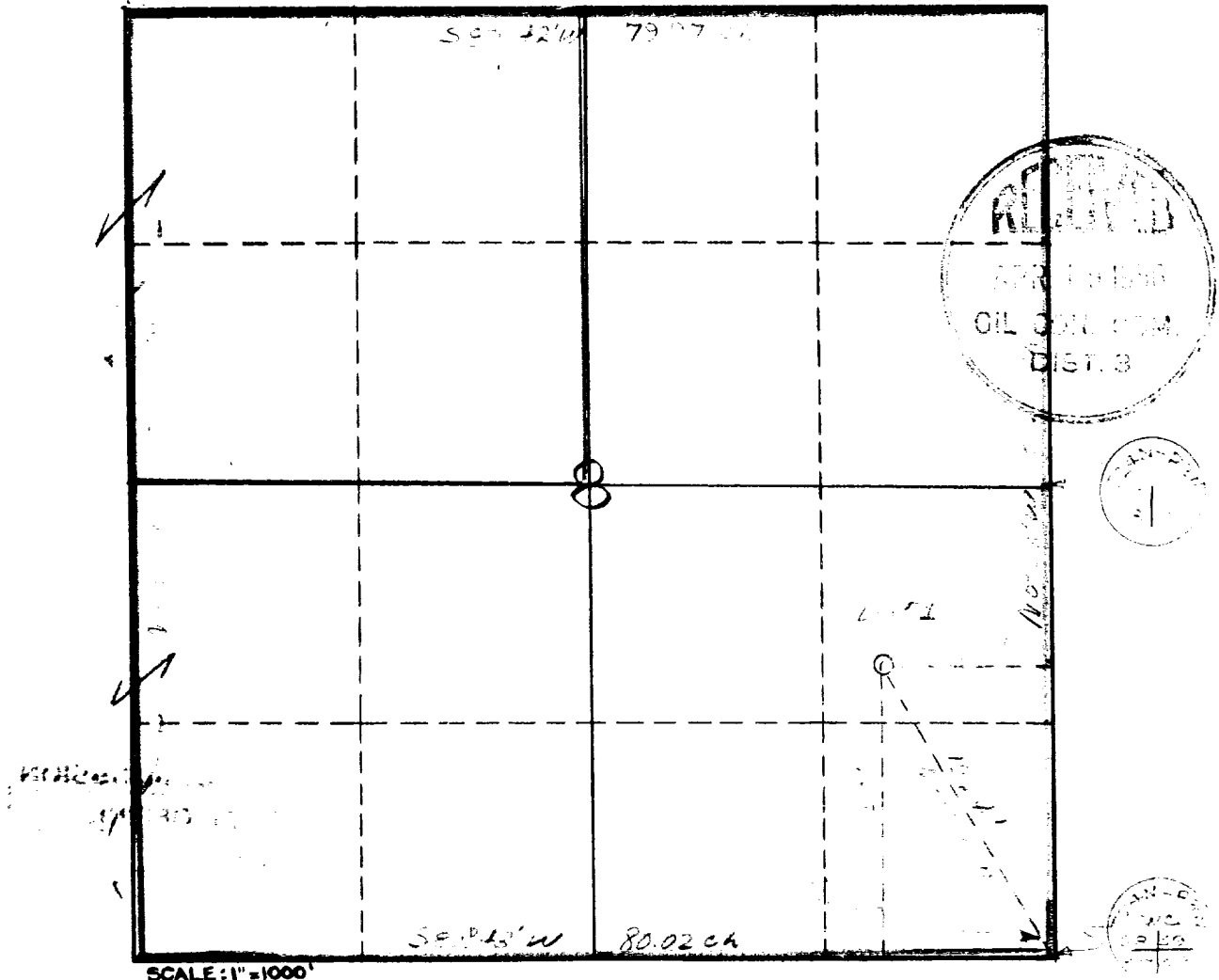
Well No. One (1) Section 8 Township 24 N Range 3 W NMPM

Located 1650 Feet From South Line, 990 Feet From East Line,

Rio Arriba County, New Mexico. G. L. Elevation 6886

Name of Producing Formation Pictured Cliff Pool Undesignated Pictured Cliff Dedicated Acreage 160 Ac.

(Note: All distances must be from outer boundaries of Section)



1. Is this Well a Dual Comp. ? Yes    No ✓.

2. If the answer to Question 1 is yes, are there any other dually completed wells within the dedicated acreage ? Yes    No   .

This is to certify that the above plat was prepared from field notes of actual surveys made by me or under my supervision and that the same are true and correct to the best of my knowledge and belief.

Name E. H. Blundell  
Position District Prod. Supt.  
Representing Magnolia Pet. Co.  
Address Box 727, Termit, Texas

Date Surveyed 3-26-56  
[Signature]  
Registered Professional Engineer and/or  
Land Surveyor 1415

# WILDERNESS CONSERVATION COMMISSION

## AZTEC DISTRICT OFFICE

No. Copies Received 3

### DISTRIBUTION

	NO. FURNISHED	
Manager	/	
Asst. Mgr.	/	
Operation Office		
State Land Office		
U. S. G. S.		
Transporter		
File	/	✓