

UNITED STATES  
DEPARTMENT OF THE INTERIOR  
BUREAU OF LAND MANAGEMENT

FORM APPROVED  
Budget Bureau No. 1004-0135  
Expires: March 31, 1993

**SUNDRY NOTICES AND REPORTS ON WELLS**

Do not use this form for proposals to drill or to deepen or reentry to a different reservoir.  
Use "APPLICATION FOR PERMIT—" for such proposals

**SUBMIT IN TRIPLICATE**

1. Type of Well

☐ Oil Well ☒ Gas Well ☐ Other

2. Name of Operator

Conoco, Inc.

3. Address and Telephone No.

10 Desta Dr. Ste 100W, Midland, TX 79705

4. Location of Well (Footage, Sec., T., R., M., or Survey Description)

1850' FSL & 790' FWL  
Sec. 10, T-24N, R-5W

5. Lease Designation and Serial No.

6. If Indian, Allottee or Tribe Name

Jicarilla Tribe  
Contract #36

7. If Unit or CA, Agreement Designation

8. Well Name and No.

Northeast Haynes #7

9. API Well No.

05-039-05564

10. Field and Pool, or Exploratory Area

Basin Dakota

11. County or Parish, State

Rio Arriba, NM

12. CHECK APPROPRIATE BOX(s) TO INDICATE NATURE OF NOTICE, REPORT, OR OTHER DATA

TYPE OF SUBMISSION

☒ Notice of Intent

☐ Subsequent Report

☐ Final Abandonment Notice

TYPE OF ACTION

☒ Abandonment

☐ Recompletion

☐ Plugging Back

☐ Casing Repair

☐ Altering Casing

☐ Other

☐ Change of Plans

☐ New Construction

☐ Non-Routine Fracturing

☐ Water Shut-Off

☐ Conversion to Injection

☐ Dispose Water

(Note: Report results of multiple completion on Well Completion or Recompletion Report and Log form)

13. Describe Proposed or Completed Operations (Clearly state all pertinent details, and give pertinent dates, including estimated date of starting any proposed work. If well is directionally drilled, give subsurface locations and measured and true vertical depths for all markers and zones pertinent to this work.)

It is proposed to plug and abandon this well according to the attached procedure and wellbore schematics.

RECEIVED  
APR 12 1994

OIL CON. DIV.  
DIST. 3

14. I hereby certify that the foregoing is true and correct

Signed

*Sam M. Moore*

Title

Sr. Conservation Coordinator

Date

3/16/94

(This space for Federal or State office use)

Approved by

CHARLEY MONDY

Title

Chief, Land Management Division

Date

APR 12 1994

Conditions of approval, if any:

Title 18 U.S.C. Section 1001, makes it a crime for any person knowingly and willfully to make to any department or agency of the United States any false, fictitious or fraudulent statements or representations as to any matter within its jurisdiction

\*See Instruction on Reverse Side

NMOCD

February 23, 1994

CONOCO INC

**NE Haynes #7 (G1/Dk)**  
NW, SW, Sec. 10, T24N, R5W  
Rio Arriba County, New Mexico

**PLUG AND ABANDONMENT PROCEDURE:**

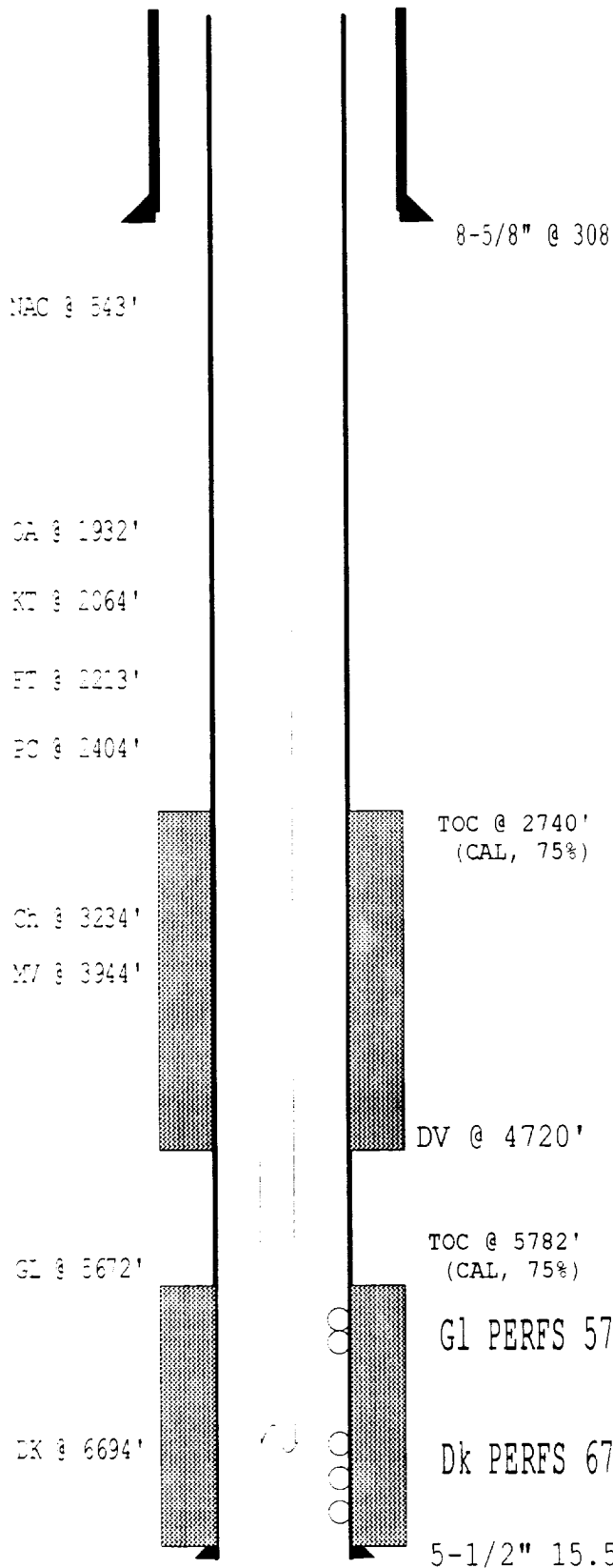
*(All cement volumes use 100% excess outside pipe an 50' inside;  
mud will be 8.4 ppg with a 40 sec vis.)*

1. Install and/or test rig anchors. Prepare blow pit. Comply to all NMOC, BLM and Conoco safety rules and regulations.
2. MOL and RUSU. Blow well down; kill with water if necessary. ND wellhead and NU BOP and stripping head; test BOP. POH and LD 1-1/4" IJ tubing (6803').
3. **Plug #1 (Dk perfs):** PU 2" tubing work string and RIH open ended; if able go to 6892'; Establish rate down tubing. Mix 56 sxs Class B cement and spot balance plug from 6892' to 6644'. POH and WOC. RIH and tag cement. POH with tubing.
4. **Plug #2 (Gallup perfs & top):** PU 5-1/2" cement retainer and RIH; set at 5622'; pressure test tubing to 1000#; establish rate into Gallup perfs. Mix 38 sxs Class B cement and squeeze 32 sxs below and spot 6 sxs on top. Circulate well clean and pressure test casing to 500#. Spot mud from top of cement to 3994'. POH to 3994'.
5. **Plug #3 (MV & Chacra tops):** Mix 94 sxs Class B cement and spot balance plug from 3994' to 3184'. Pull above cement and spot mud to 2454'. POH with setting tool. Pressure test casing to 500#.
6. **Plug #4 (PC & Ft tops):** Perforate 4 holes at 2454'. Establish rate into holes if casing tested. PU 5-1/2" cement retainer and RIH; set at 2400'; establish rate into holes. Mix 124 sxs Class B cement and squeeze 85 sxs outside and leave 39 sxs inside casing. POH with setting tool.
7. **Plug #5 (Kt & OA tops):** Perforate 4 holes at 2114'. Establish rate into holes if casing tested. PU 5-1/2" cement retainer and RIH; set at 2064'; establish rate into holes. Mix 104 sxs Class B cement and squeeze 68 sxs outside and leave 26 sxs inside casing. POH above cement; mix and spot mud to 593'. POH and LD tubing.
8. **Plug #6 (Macimiento & Surface):** Perforate 4 holes at 593'. Establish circulation out bradenhead valve. Mix approximately 170 sxs Class B cement and pump down 5-1/2" casing, circulate good cement to surface. Shut in well and WOC.
9. ND BOP and cut off well head below surface casing flange and install P&A marker to BLM specs. RD and MOL. Cut off anchors.
10. Restore location per BLM stipulations.

# EXISTING WELL

23 FEB 94

CONOCO INC  
NE HAYNES #7 (DK)  
SW, Sec. 10, 24N, 5W  
RIO ARriba COUNTY, NM



1-1/4" IJ TUBING AT 6803'

HOLE 7-7/8"

# PLUGGED WELL

23 FEB 94

CONOCO INC  
NE HAYNES #7 (DK)  
SW, Sec. 10, 24N, 5W  
RIO ARriba COUNTY, NM

