

NEW MEXICO OIL CONSERVATION COMMISSION
Santa Fe, New Mexico

WELL RECORD

Mail to District Office, Oil Conservation Commission, to which Form C-101 was sent not later than twenty days after completion of well. Follow instructions in Rules and Regulations of the Commission. Submit in QUINTUPLICATE. If State Land submit 6 Copies

Central Production Co. (Company or Operator) C. P. State (Land)
Well No. 1, in 1/4 of NE 1/4, of Sec. 2, T. 24N, R. 6W, NMPM.
Canyon Largo Pool, Rio Arriba County.
Well is 990 feet from North line and 990 feet from East line of Section 2. If State Land the Oil and Gas Lease No. is
Drilling Commenced 2-28, 1959 Drilling was Completed 3-3, 1959.
Name of Drilling Contractor Empire States Drilling Corp.
Address 1020 Simms Bldg, Albuq. N.M.
Elevation above sea level at Top of Tubing Head 6666 The information given is to be kept confidential until 19

OIL SANDS OR ZONES

No. 1, from 2454 to 2476 Gas No. 4, from to
No. 2, from to No. 5, from to
No. 3, from to No. 6, from to

IMPORTANT WATER SANDS

Include data on rate of water inflow and elevation to which water rose in hole.

No. 1, from to feet.
No. 2, from to feet.
No. 3, from to feet.
No. 4, from to feet.



CASING RECORD

SIZE	WEIGHT PER FOOT	NEW OR USED	AMOUNT	KIND OF SHOE	CUT AND PULLED FROM	PERFORATIONS	PURPOSE
8 5/8	36#	New	102	Larkin			Surface
5 1/2	15.5	New	2415	"			Prod.

MUDDING AND CEMENTING RECORD

SIZE OF HOLE	SIZE OF CASING	WHERE SET	NO. SACKS OF CEMENT	METHOD USED	MUD GRAVITY	AMOUNT OF MUD USED
11"	8 5/8	102	100	Halliburton		
7 7/8	5 1/2	2515	150	"		

RECORD OF PRODUCTION AND STIMULATION

(Record the Process used, No. of Qts. or Gals. used, interval treated or shot.)

perforated from 2454 to 2476 with 4 shots per ft. Sand-water fractured with 20,000 # of sand and 30,000 gal of water. Swabbed well in and tested for 3 hours on 3/4 choke. Well tested 750MCF.

Result of Production Stimulation

Completed for 750 MCF.

Depth Cleaned Out 2900

RECORD OF DRILL-STEM AND SPECIAL TESTS

If drill-stem or other special tests or deviation surveys were made, submit report on separate sheet and attach hereto

TOOLS USED

Rotary tools were used from 0 feet to 2515 feet, and from feet to feet.
Cable tools were used from feet to feet, and from feet to feet.

PRODUCTION

Put to Producing 3-20-59, 19

OIL WELL: The production during the first 24 hours was barrels of liquid of which % was
was oil; % was emulsion; % water; and % was sediment. A.P.I.
Gravity

GAS WELL: The production during the first 24 hours was 750 M.C.F. plus barrels of
liquid Hydrocarbon. Shut in Pressure 690 lbs.

Length of Time Shut in 7 days

PLEASE INDICATE BELOW FORMATION TOPS (IN CONFORMANCE WITH GEOGRAPHICAL SECTION OF STATE):

Southeastern New Mexico

Northwestern New Mexico

T. Anhy	T. Devonian	T. Ojo Alamo
T. Salt	T. Silurian	T. Kirtland-Fruitland
B. Salt	T. Montoya	T. Farmington
T. Yates	T. Simpson	T. Pictured Cliffs 2454
T. 7 Rivers	T. McKee	T. Menefee
T. Queen	T. Ellenburger	T. Point Lookout
T. Grayburg	T. Gr. Wash	T. Mancos
T. San Andres	T. Granite	T. Dakota
T. Glorieta	T.	T. Morrison
T. Drinkard	T.	T. Penn
T. Tubbs	T.	T.
T. Abo	T.	T.
T. Penn	T.	T.
T. Miss	T.	T.

FORMATION RECORD

From	To	Thickness in Feet	Formation	From	To	Thickness in Feet	Formation
2454	2476	22	Pictured Cliffs				

OIL CONSERVATION COMMISSION

AZTEC DISTRICT OFFICE

No. Copies Received 5

DISTRIBUTION

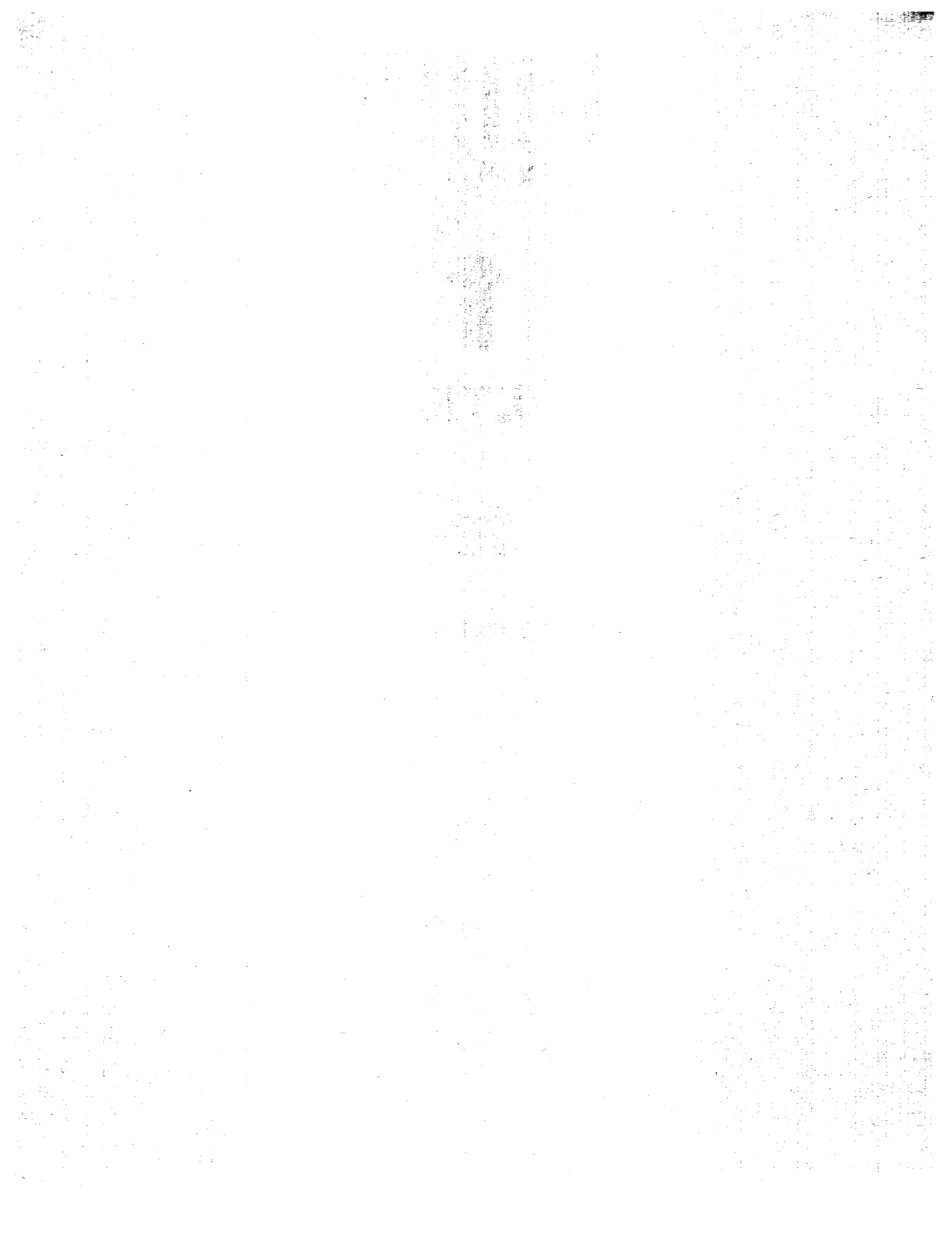
	NO. FURNISHED	
Operator	1	
Santa Fe	1	
Proration Office		
State Land Office		
U. S. G. S.	2	
Transporter		
File	1	✓

ATTACH SEPARATE SHEET IF ADDITIONAL SPACE IS NEEDED

I hereby swear or affirm that the information given herewith is a complete and correct record of the well and all work done on it so far as can be determined from available records.

May 5, 1959 (Date)

Company or Operator Central Production Co Address 601 Ridgcrest Dr. SE
Name Jay J. Harris Albuquerque, N.M.
Jay J. Harris Geologist



NEW MEXICO OIL CONSERVATION COMMISSION
SANTA FE, NEW MEXICO

Form C-110
Revised 7/1/55

(File the original and 4 copies with the appropriate district office)

CERTIFICATE OF COMPLIANCE AND AUTHORIZATION
TO TRANSPORT OIL AND NATURAL GAS

Company or Operator Central Production Co. Lease C. P. State
Well No. 1 Unit Letter H S 2 T 24N R 6W Pool Ballard Dist. Cliffs
County Rio Arriba Kind of Lease (State, Fed. or Patented) State
If well produces oil or condensate, give location of tanks: Unit S T R
Authorized Transporter of Oil or Condensate _____

Address _____
(Give address to which approved copy of this form is to be sent)

Authorized Transporter of Gas El Paso Natural Gas Co.

Address Farmington, N. M.
(Give address to which approved copy of this form is to be sent)

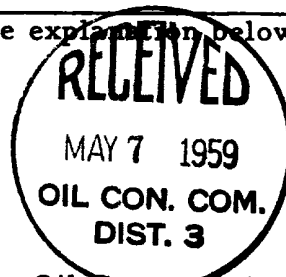
If Gas is not being sold, give reasons and also explain its present disposition:

Reasons for Filing: (Please check proper box) New Well _____ (X)

Change in Transporter of (Check One): Oil () Dry Gas () C'head () Condensate ()

Change in Ownership _____ () Other _____ ()

Remarks: _____ (Give explanation below)



The undersigned certifies that the Rules and Regulations of the Oil Conservation Commission have been complied with.

Executed this the 5 day of May 19

Approved EST 23 1959 19

OIL CONSERVATION COMMISSION

By Original Signed Emery C. Arnold

Title Supervisor Dist. # 3

By Jay J. Harris
Title Geologist

Company Central Production Co.

Address Jay J. Harris
801 Ridgcrest Dr., SE
Albuquerque, N. M.

OIL CONSERVATION COMMISSION		
AZTEC DISTRICT OFFICE		
No. Copies Received		5
DISTRIBUTION		
	NO. FURNISHED	
Director	2	
Assistant	1	
Production Office		
State Land Office		
U.S.G.S.		
Transporter	1	
File	1	✓