

UNITED STATES
DEPARTMENT OF THE INTERIOR
BUREAU OF LAND MANAGEMENT

FORM APPROVED
Budget Bureau No. 1004-0135
Expires: March 31, 1993

SUNDRY NOTICES AND REPORTS ON WELLS

Do not use this form for proposals to drill or to deepen or reentry to a different reservoir.
Use "APPLICATION FOR PERMIT—" for such proposals

SUBMIT IN TRIPLICATE

1. Type of Well

☐ Oil Well ☒ Gas Well ☐ Other

2. Name of Operator

Texaco Exploration and Production Inc.

3. Address and Telephone No.

3300 N. Butler, Farmington N.M. 87401 (505)325-4397

4. Location of Well (Footage, Sec., T., R., M., or Survey Description)

660' FSL & 1980' FEL of sec. 31, T25N-R5W

5. Lease Designation and Serial No.

CONTRACT 68

6. If Indian, Allottee or Tribe Name

Jicarilla Apache

7. If Unit or CA, Agreement Designation

8. Well Name and No.

Jicarilla B 9

9. API Well No.

300390057090001

10. Field and Pool, or Exploratory Area

Otero, Gallup

11. County or Parish, State

Rio Arriba, NM

12. CHECK APPROPRIATE BOX(s) TO INDICATE NATURE OF NOTICE, REPORT, OR OTHER DATA

TYPE OF SUBMISSION

- ☒ Notice of Intent
☐ Subsequent Report
☐ Final Abandonment Notice

TYPE OF ACTION

- ☒ Abandonment
☐ Recompletion
☐ Plugging Back
☐ Casing Repair
☐ Altering Casing
☐ Other

- ☒ Change of Plans
☐ New Construction
☐ Non-Routine Fracturing
☐ Water Shut-Off
☐ Conversion to Injection
☐ Dispose Water

(Note: Report results of multiple completion on Well Completion or Recompletion Report and Log form.)

13. Describe Proposed or Completed Operations (Clearly state all pertinent details, and give pertinent dates, including estimated date of starting any proposed work. If well is directionally drilled, give subsurface locations and measured and true vertical depths for all markers and zones pertinent to this work.)*

Texaco Exploration and Production wishes to amend the previous sundry for the subject well, and request approval to plug and abandoned.

- MIRUSU. Notify BLM to witness. TOOH w/ TBG. TIH w/ 5 1/2" CMT RET. Set RET @ 6000'. Establish rate and pressure into Gallup perforations (6030'-6130') and SQZ perfs using 35 SX class "B" CMT.
- Sting out of RET and spot 5 SX (1 BBL) class "B" CMT on top of RET. (Top of plug @ 5950')
- Pull up hole and spot 53 BBL fresh water mud from top of plug (5950') to 3700'.
- Spot 30 sx (6 BBLs) CMT plug from 3700'-3450'. Spot 16 BBLs fresh water mud from top of plug to 2750'.
- Spot 17 sx (3.5 BBLs) CMT plug from 2750'-2600'.
- RIH w/ wireline and perf 4 sqz holes @ 375', POOH w/ wireline. RU Service Co., open bradenhead, and establish a rate and pressure into Sqz holes:
If circulation is obtained, circulate CMT to surface outside CSG. (Annular Vol = 28 BBL). Shut-in bradenhead, CMT to surface using class "B" CMT.
If circulation is not obtained, close annulus @ surface and SQZ holes @ 375' using 30 SX class "B" CMT, establish a standing sqz of 400 PSI. Spot to surface, inside CSG. RDMOSU. SDFN.
- Remove all surface equipment. Reclaim location. Erect P&A marker.

14. I hereby certify that the foregoing is true and correct

Signed

Title Area Manager

Date 3/13/92

(This space for Federal or State office use)

Approved by
Conditions of approval, if any:

Title

Date

APPROVED
AS AMENDED

SEE ATTACHED FOR
CONDITIONS OF APPROVAL

APR 09 1992

Title 18 U.S.C. Section 1001, makes it a crime for any person knowingly and willfully to make to any department or agency of the United States any false, fictitious or fraudulent statements or representations as to any matter within its jurisdiction.

*See Instruction on Reverse Side

BTM - Farmington (5). HOGCC (3). Navajo Tribe (1). TAT, RSL, MLK, MAG

TRB

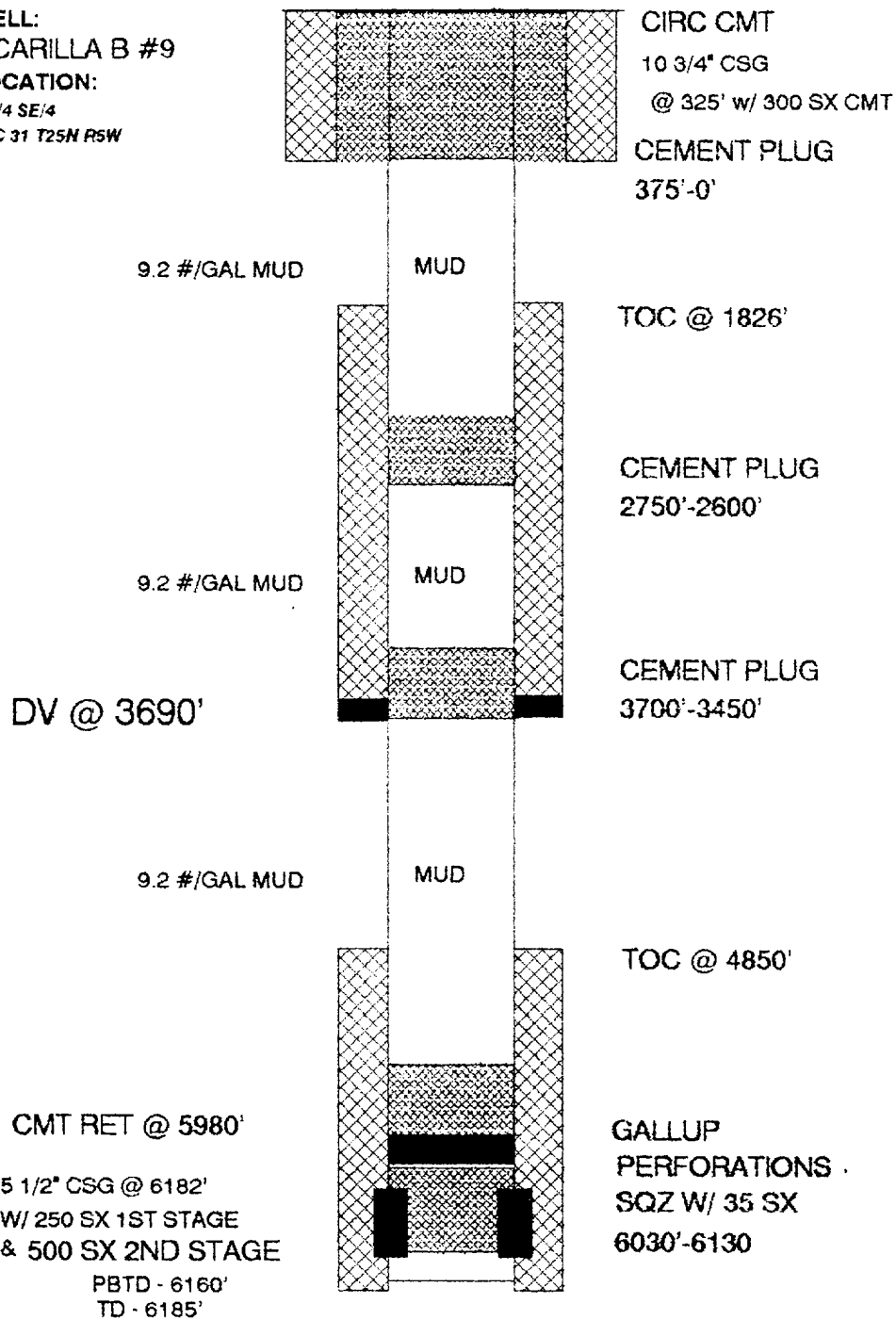
3713030

100 10



JICARILLA B No. 9 ABANDONMENT CONDITIONS

WELL:
JICARILLA B #9
LOCATION:
SW/4 SE/4
SEC 31 T25N R5W



IN REPLY REFER TO
(019)

UNITED STATES DEPARTMENT OF THE INTERIOR

BUREAU OF LAND MANAGEMENT
FARMINGTON RESOURCE AREA
1235 LA PLATA HIGHWAY
FARMINGTON, NEW MEXICO 87401

Attachment to Notice of

Re: Permanent Abandonment

Intention to Abandon

Well: 9 Jrc B

CONDITIONS OF APPROVAL

1. Plugging operations authorized are subject to the attached "General Requirements for Permanent Abandonment of Wells on Federal Leases."
2. Mark Kelly with the Farmington Office is to be notified at least 24 hours before the plugging operations commence (505) 326-6201.
3. Blowout prevention equipment is required.
4. The following modifications to your plugging program are to be made (when applicable):
 - add to the plug and abandonment program
 - 1) Perf@ 4274 and plug inside & outside 5 1/2" casing from 4274 - 4174 + 100% excess (Mesaverde)
 - 2) Bring plug #5 (PC) up to 2475 to cover top of Fruitland
 - 3) Spot a plug from 2401 - 2190 (Ojo Alamo)
 - 4) Perf@ 1060 and plug inside & outside 5 1/2" casing from 1060 - 960 + 100% excess (Nacimiento)

Office Hours: 7:45 a.m. to 4:30 p.m.

GENERAL REQUIREMENTS FOR
PERMANENT ABANDONMENT OF WELLS ON FEDERAL AND INDIAN LEASES
FARMINGTON RESOURCE AREA

1. Secure prior approval either on a Sundry Notice (Form 3160-5) or verbally from the Fluids Drilling & Production Section at this office before changing the approved plugging program.

2. Plugging equipment used shall have separate mixing and displacement pumps and a calibrated tank to assure proper displacement of plugs. The Operator is responsible for providing all measuring devices needed to assure proper measurement of materials being used.

3. A proper tank or pit will be used to contain all fluids pumped from the well during plugging operations. Unattended pits are to be fenced.

4. All cement plugs are to be placed through tubing (or drillpipe) and shall be a minimum of 100 feet in length with 50% excess inside casing or 100% excess when plug is set in open hole or squeezed into perforations. 15.6#/gal slurry weight is to be used when using class B neat cement or when CaCl_2 is used. Use the recommended slurry weight of other type cements when they are used (Class C, Pozzolan etc.).

5. Any cement plugs placed when well is not full of fluid, or when well may be taking fluid, (i.e. across perms-unless bridge plug or retainer is used, across bad csg., or fresh water formations) will be tagged (touched) after cement has set to verify proper location.

5a. Testing The first plug below the surface plug shall generally be tested by either tagging the plug with the working pipe string, or pressuring to a minimum pump (surface) pressure of 1000 psig, with no more than a 10 percent drop during a 15-minute period (cased hole only). If the integrity of any other plug is questioned, it must be tested in the same manner. Also, any cement plug which is the only isolating medium for a fresh water interval or a zone containing a valuable mineral deposit should be tested by tagging with the drill string.

6. Mud must be placed between plugs. Plugging mud is to be made up with a minimum of 15 lbs/bbl of sodium bentonite, and a nonfermenting polymer. Minimum consistency of plugging mud must be 9 lbs/gal and with a minimum viscosity of 50 sec/qt. Fresh water is to be utilized for mixing mud.

7. Following the placement of a cement plug, the withdrawal rate for at least the length of the cement plug shall not exceed 30 ft/min, in order to minimize the contamination of the plug.

8. Within 30 days after plugging work is completed, file a Sundry Notice (Subsequent Report of Abandonment, Form 3160-5), in quintuplicate with Area Manager, Bureau of Land Management, 1235 La Plata Highway, Farmington, NM 87401. The report should give in detail the manner in which the plugging work was carried out, the extent (by depths) of cement plugs placed, and the size and location (by depths) of casing left in the well. Show date well was plugged.

9. All permanently abandoned wells are to be marked with a regulation marker (4" pipe extending 4' above the ground line) containing the information as specified in 43 CFR 3162.6(d). Unless otherwise approved.

10. After plugging work is completed the surface is to be rehabilitated in accord with instructions from the Fluids Surface Management Section of the Farmington Resource Area Office.

All above are minimum requirements. The period of liability under the bond of record will not be terminated until the lease is inspected and surface work approved.

Please advise this office when the well location is ready for final inspection.

Failure to comply with the above conditions of approval may result in an assessment for noncompliance and/or a Shut-in Order being issued pursuant to 43 CFR 3163.1.

You are further advised that any instructions, orders or decisions issued by the Bureau of Land Management are subject to administrative review pursuant to 43 CFR 3165.3 and appeal pursuant to 43 CFR 3165.4 and 43 CFR 4.700.

UNITED STATES
DEPARTMENT OF THE INTERIOR
BUREAU OF LAND MANAGEMENT

SUNDRY NOTICES AND REPORTS ON WELLS

Do not use this form for proposals to drill or to deepen or reentry to a different reservoir.
Use "APPLICATION FOR PERMIT—" for such proposals

SUBMIT IN TRIPLICATE

FORM APPROVED
Budget Bureau No. 1004-0135
Expires: March 31, 1993

5. Lease Designation and Serial No.

CONTRACT 68

6. If Indian, Allottee or Tribe Name

Jicarilla Apache

7. If Unit or CA, Agreement Designation

8. Well Name and No.

Jicarilla B 9

9. API Well No.

300390057090001

10. Field and Pool, or Exploratory Area

Otero, Gallup

11. County or Parish, State

Rio Arriba, NM

1. Type of Well
☐ Oil Well ☒ Gas Well ☐ Other

2. Name of Operator

Texaco Exploration and Production Inc.

3. Address and Telephone No.

3300 N. Butler, Farmington N.M. 87401 (505)325-4397

4. Location of Well (Footage, Sec., T., R., M., or Survey Description)

660' FSL & 1980' FEL of sec. 31, T25N-R5W

12. CHECK APPROPRIATE BOX(s) TO INDICATE NATURE OF NOTICE, REPORT, OR OTHER DATA

TYPE OF SUBMISSION

☒ Notice of Intent

☐ Subsequent Report

☐ Final Abandonment Notice

TYPE OF ACTION

☒ Abandonment

☐ Recompletion

☐ Plugging Back

☐ Casing Repair

☐ Altering Casing

☐ Other

☒ Change of Plans

☐ New Construction

☐ Non-Routine Fracturing

☐ Water Shut-Off

☐ Conversion to Injection

☐ Dispose Water

(Note: Report results of multiple completion on Well Completion or Recompletion Report and Log form.)

13. Describe Proposed or Completed Operations (Clearly state all pertinent details, and give pertinent dates, including estimated date of starting any proposed work. If well is directionally drilled, give subsurface locations and measured and true vertical depths for all markers and zones pertinent to this work.)*

Texaco Exploration and Production wishes to amend the previous sundry for the subject well, and request approval to plug and abandoned.

- MIRUSU. Notify BLM to witness. TOOH w/ TBG. TIH w/ 5 1/2" CMT RET. Set RET @ 6000'. Establish rate and pressure into Gallup perforations (6030'-6130') and SQZ perfs using 35 SX class "B" CMT.
- Sting out of RET and spot 5 SX (1 BBL) class "B" CMT on top of RET. (Top of plug @ 5950')
- Pull up hole and spot 53 BBL fresh water mud from top of plug (5950') to 3700'.
- Spot 30 sx (6 BBLs) CMT plug from 3700'-3450'. Spot 16 BBLs fresh water mud from top of plug to 2750'.
- Spot 17 sx (3.5 BBLs) CMT plug from 2750'-2600'.
- RIH w/ wireline and perf 4 sqz holes @ 375', POOH w/ wireline. RU Service Co., open bradenhead, and establish a rate and pressure into Sqz holes:
If circulation is obtained, circulate CMT to surface outside CSG. (Annular Vol = 28 BBL). Shut-in bradenhead, CMT to surface using class "B" CMT.
If circulation is not obtained, close annulus @ surface and SQZ holes @ 375' using 30 SX class "B" CMT, establish a standing sqz of 400 PSI. Spot to surface, inside CSG. RDMOSU. SDFN.
- Remove all surface equipment. Reclaim location. Erect P&A marker.

14. I hereby certify that the foregoing is true and correct

Signed [Signature]

Title Area Manager

Date 3/13/92

(This space for Federal or State office use)

Approved by _____
Conditions of approval, if any:

Title SEE ATTACHED FOR
CONDITIONS OF APPROVAL

Date APR 09 1992

APPROVED
AS AMENDED

Title 18 U.S.C. Section 1001, makes it a crime for any person knowingly and willfully to make to any department or agency of the United States any false, fictitious or fraudulent statements or representations as to any matter within its jurisdiction.

*See Instruction on Reverse Side

BLM - Farmington (5), HOGCC (3), Navajo Tribe (1), TAT, RSL, MLK, MAG

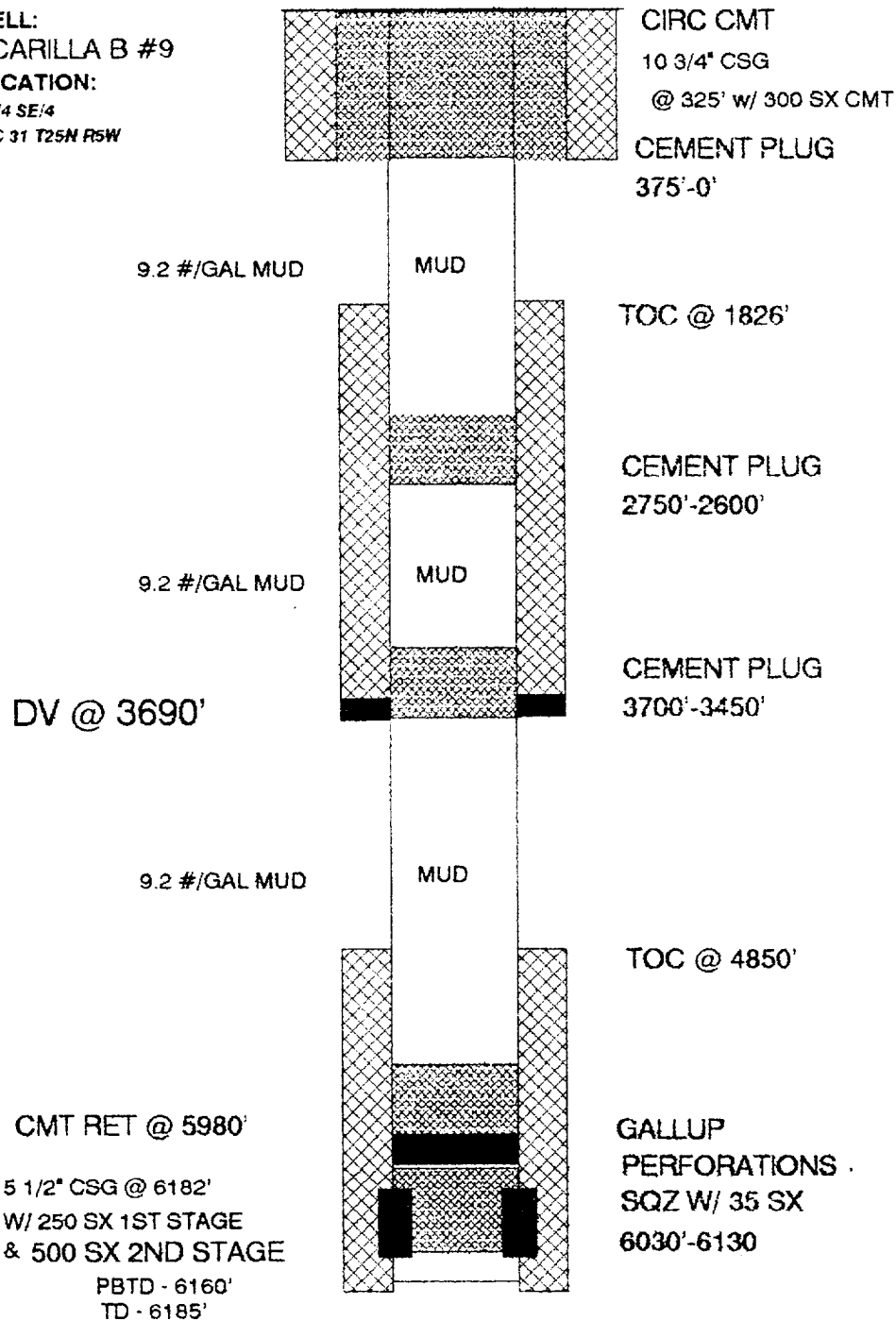
NMOCD

TRB



JICARILLA B No. 9
ABANDONMENT CONDITIONS

WELL:
JICARILLA B #9
LOCATION:
SW/4 SE/4
SEC 31 T25N R5W



IN REPLY REFER TO
(019)

UNITED STATES DEPARTMENT OF THE INTERIOR

BUREAU OF LAND MANAGEMENT
FARMINGTON RESOURCE AREA
1235 LA PLATA HIGHWAY
FARMINGTON, NEW MEXICO 87401

Attachment to Notice of

Re: Permanent Abandonment

Intention to Abandon

Well: 9 Jrc B

CONDITIONS OF APPROVAL

1. Plugging operations authorized are subject to the attached "General Requirements for Permanent Abandonment of Wells on Federal Leases."
2. Mark Kelly with the Farmington Office is to be notified at least 24 hours before the plugging operations commence (505) 326-6201.
3. Blowout prevention equipment is required.
4. The following modifications to your plugging program are to be made (when applicable):
 - add to the plug and abandonment program*
 - 1) Pert@ 4274 and plug inside & outside 5 1/2" casing from 4274 - 4174 + 100% excess (Mesaverde)
 - 2) Bring plug #5 (PC) up to 2475 to cover top of Fruitland
 - 3) Spot a plug from 2401 - 2190 (Ojo Alamo)
 - 4) Pert@ 1060 and plug inside & outside 5 1/2" casing from 1060 - 960 + 100% excess (Nacimiento)

Office Hours: 7:45 a.m. to 4:30 p.m.

GENERAL REQUIREMENTS FOR
PERMANENT ABANDONMENT OF WELLS ON FEDERAL AND INDIAN LEASES
FARMINGTON RESOURCE AREA

1. Secure prior approval either on a Sundry Notice (Form 3160-5) or verbally from the Fluids Drilling & Production Section at this office before changing the approved plugging program.

2. Plugging equipment used shall have separate mixing and displacement pumps and a calibrated tank to assure proper displacement of plugs. The Operator is responsible for providing all measuring devices needed to assure proper measurement of materials being used.

3. A proper tank or pit will be used to contain all fluids pumped from the well during plugging operations. Unattended pits are to be fenced.

4. All cement plugs are to be placed through tubing (or drillpipe) and shall be a minimum of 100 feet in length with 50% excess inside casing or 100% excess when plug is set in open hole or squeezed into perforations. 15.6#/gal slurry weight is to be used when using class B neat cement or when CaCl_2 is used. Use the recommended slurry weight of other type cements when they are used (Class C, Pozzolan etc.).

5. Any cement plugs placed when well is not full of fluid, or when well may be taking fluid, (i.e. across perms-unless bridge plug or retainer is used, across bad csg., or fresh water formations) will be tagged (touched) after cement has set to verify proper location.

5a. Testing The first plug below the surface plug shall generally be tested by either tagging the plug with the working pipe string, or pressuring to a minimum pump (surface) pressure of 1000 psig, with no more than a 10 percent drop during a 15-minute period (cased hole only). If the integrity of any other plug is questioned, it must be tested in the same manner. Also, any cement plug which is the only isolating medium for a fresh water interval or a zone containing a valuable mineral deposit should be tested by tagging with the drill string.

6. Mud must be placed between plugs. Plugging mud is to be made up with a minimum of 15 lbs/bbl of sodium bentonite, and a nonfermenting polymer. Minimum consistency of plugging mud must be 9 lbs/gal and with a minimum viscosity of 50 sec/qt. Fresh water is to be utilized for mixing mud.

7. Following the placement of a cement plug, the withdrawal rate for at least the length of the cement plug shall not exceed 30 ft/min, in order to minimize the contamination of the plug.

8. Within 30 days after plugging work is completed, file a Sundry Notice (Subsequent Report of Abandonment, Form 3160-5), in quintuplicate with Area Manager, Bureau of Land Management, 1235 La Plata Highway, Farmington, NM 87401. The report should give in detail the manner in which the plugging work was carried out, the extent (by depths) of cement plugs placed, and the size and location (by depths) of casing left in the well. Show date well was plugged.

9. All permanently abandoned wells are to be marked with a regulation marker (4" pipe extending 4' above the ground line) containing the information as specified in 43 CFR 3162.6(d). Unless otherwise approved.

10. After plugging work is completed the surface is to be rehabilitated in accord with instructions from the Fluids Surface Management Section of the Farmington Resource Area Office.

All above are minimum requirements. The period of liability under the bond of record will not be terminated until the lease is inspected and surface work approved.

Please advise this office when the well location is ready for final inspection.

Failure to comply with the above conditions of approval may result in an assessment for noncompliance and/or a Shut-in Order being issued pursuant to 43 CFR 3163.1.

You are further advised that any instructions, orders or decisions issued by the Bureau of Land Management are subject to administrative review pursuant to 43 CFR 3165.3 and appeal pursuant to 43 CFR 3165.4 and 43 CFR 4.700.