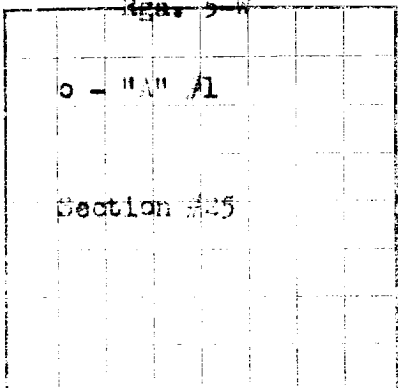


U. S. LAND OFFICE **Jicarilla Apache**
SERIAL NUMBER **Tribal #9; Tract #10**
LEASE OR PERMIT TO PROSPECT



UNITED STATES
DEPARTMENT OF THE INTERIOR
GEOLOGICAL SURVEY

LOG OF OIL OR GAS WELL

Company **Amrad Petroleum Corporation** Address **Drawer D - Monument, New Mexico**
Lessor or Tract **Jicarilla Apache "A"** Field **Wildcat** State **New Mexico**
Well No. **1-A** Sec. **25** R. **5-W** Meridian **N.M.P.** County **Rio Arriba**
Location **820** ft. **xxx** of **E** Line and **830** ft. **xxx** of **W** Line of **Section #25** Elevation **6829'**
The information given herewith is a complete and correct record of the well and all work done thereon so far as can be determined from all available records.
Signed **[Signature]**
Date **April 1, 1955** Title **Drilling** Dist. **Apt.**

Commenced drilling **March 6,** 19**55** Finished drilling **March 23,** 19**55**

OIL OR GAS SANDS OR ZONES

No. 1, from **3005.5'** to **3031'** No. 4, from **3031'** to **3031'**
No. 2, from **3031'** to **3031'** No. 5, from **3031'** to **3031'**
No. 3, from **3031'** to **3031'** No. 6, from **3031'** to **3031'**

IMPORTANT WATER SANDS

No. 1, from **None** to **None** No. 3, from **None** to **None**
No. 2, from **None** to **None** No. 4, from **None** to **None**

CASING RECORD

Size casing	Weight per foot	Threads per inch	Make	Amount	Kind of shoe	Cut and pulled from	Perforated		Purpose
							From-	To-	
10-3/4"	32.75	8	Lehigh	185'	Guide				
7-5/8"	26.40	8	Nat Tub	3036'	Float		3005.5'	3010.5'	Gas Production.

MUDDING AND CEMENTING RECORD

Size casing	Where set	Number sacks of cement	Method used	Mud gravity	Amount of mud used
10-3/4"	169'	150	Halliburton		
7-5/8"	3011'	200	Halliburton		

PLUGS AND ADAPTERS

Heaving plug—Material _____ Length _____ Depth set _____
Adapters—Material _____ Size _____

SHOOTING RECORD

Size	Shell used	Explosive used	Quantity	Date	Depth shot	Depth cleaned out
6-3/4"	7-5/8"	20	10,000 gals.		3005.5' to 3010.5'	

Sand-oiled 7-5/8" casing perforations 3005.5' to 3010.5' and 6-3/4" open hole from 3011' to 3031' with 10,000 gals. 2 diesel fuel oil and 60.0 lbs. sand.

TOOLS USED

Rotary tools were used from _____ feet to _____ feet, and from _____ feet to _____ feet
Cable tools were used from _____ feet to _____ feet, and from _____ feet to _____ feet

NOTES

Put to producing _____, 19**55**

The production for the first 24 hours was _____ barrels of fluid of which **March 24,** % was oil; %
emulsion; % water; and % sediment. Gravity, °Bé. _____

If gas well, cu. ft. per 24 hours _____ Gallons gasoline per 1,000 cu. ft. of gas _____

Rock pressure, lbs. per sq. in. **2,076.000**
After **17** days, cleaned in.

_____, Driller _____, Driller
F. M. Green, Driller _____, Driller

FORMATION RECORD

FROM -	TO -	TOTAL FEET	FORMATION
0'	6'	6'	Cellar
6'	3020'	3014'	Sand and shale and shells
3020'	3039'	19'	Sand
3039'	3044'	5'	Sand and shale
3044'	3062'	18'	Sand
3062'	3081'	19'	Sand and shale
	3081'		Total Depth

Top of Pictured Hills - 3003.5'

HISTORY OF OIL OR GAS WELL

16-43094-2 U. S. GOVERNMENT PRINTING OFFICE

It is of the greatest importance to have a complete history of the well. Please state in detail the dates of redrilling, together with the reasons for the work and its results. If there were any changes made in the casing, state fully, and if any casing was "sidetracked" or left in the well, give its size and location. If the well has been dynamited, give date, size, position, and number of shots. If plugs or bridges were put in to test for water, state kind of material used, position, and results of pumping or bailing.

WELL HISTORY

Spudded 8-3/4" hole and reamed to 13-3/4" hole, 3-6-55. Set 10-3/4" OD casing at 169', 3-7-55. Drilled 9-7/8" hole to 3012', finished 3-14-55. Ran Schlumberger Electric Log and Gamma Ray. Set 7-5/8" OD casing at 3011', 3-16-55. Rotary rig released, 3-16-55.

Moved in cable tool rig and drilled 6-3/4" hole to 3081', finished 3-23-55. Ran Schlumberger Gamma Ray and Induction Log and Neutron Survey. Perforated 7-5/8" OD casing from 3005.5' to 3010.5' with 30 jet shots. Ran 2" EUE tubing, set @ 3006', and sand-oiled 7-5/8" OD casing perforations and 6-3/4" open hole from 3011' to 3081' (from 3005.5' to 3010.5') with 10,000 gallons of #2 diesel fuel oil and 6,000 pounds of sand. Swabbed well in and flowed to clean up. Released cable tool rig at 11AM, 3-24-55. Ran 2" EUE tubing set at 3006', 3-23-55.

COMPLETION REPORT

Flowed no fluid in 18 hours on 3/4" choke; TP 50#; gas volume 1,424,000 cfpd. Well completed 3-24-55.

DEVIATION SURVEYS

180' - Straight; 500' - Straight; 900' - 1/2 deg.; 1650' - 1 deg.; 2465' - 1/2 deg.