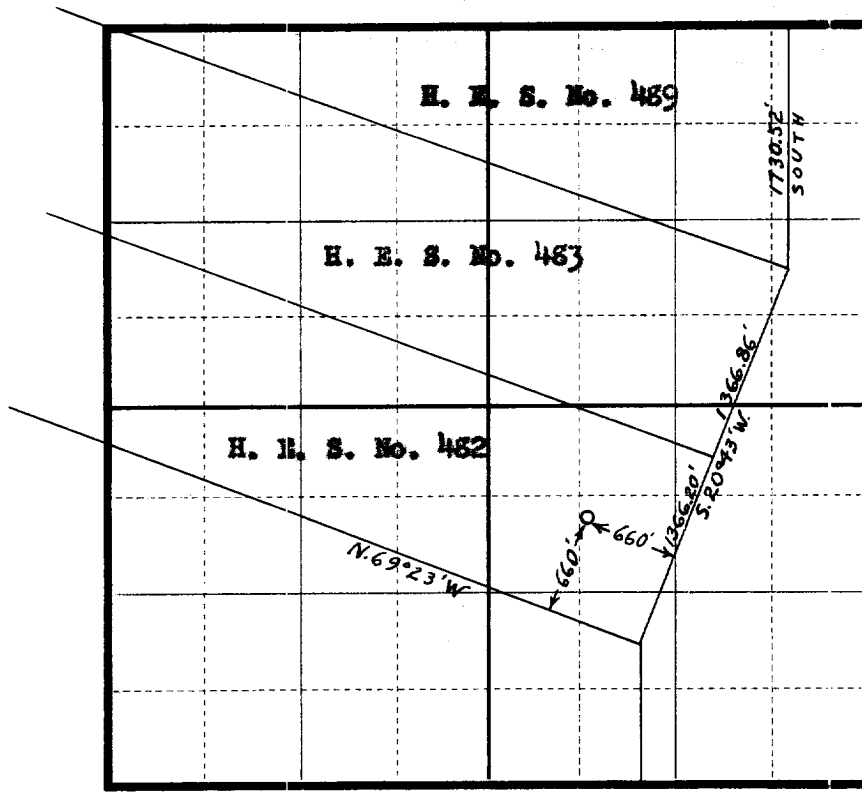




Company AIRFLEETS, INC.
Lease Airfleets Maestas Fee Well No. 1
Section 20 Township 25 North Range 1 East N. M. P. M.
Location in NW 1/4, 660 feet from Easterly line and 660 feet from
Southerly line of SEVERAL H. E. S. No. 482



128.95'
off center
OK RS 8/30

Rio Arriba County, New Mexico. Scale: 4 Inches = 1 Mile.

This is to certify that the above plat was made from field notes of actual surveys made by me or under my supervision and that the representations thereon set forth are true and correct to the best of my knowledge and belief.

Edward K. Elder
NEW MEXICO REGISTERED ~~LAND SURVEYOR~~
~~1922~~ LAND SURVEYOR NO. 1923

Seal:

Surveyed August 27th, 1952

OIL CONSERVATION COMMISSION
AZTEC DISTRICT OFFICE
No. Copies Received 5
DISTRIBUTION

	NO. FURNISHED	
Operator	1	
Santa Fe	1	
Proration Office		
State Land Office		
U. S. G. S.	2	
Transporter		
File	1	✓

Blank area for additional distribution details or notes.

Oil Conservation Commission
 Aztec District Office
 No. Copies Received 5
 DISTRIBUTION
 Operator 1
 Santa Fe 1
 Proration Office
 State Land Office
 U. S. G. S. 2
 Transporter
 File 1 ✓