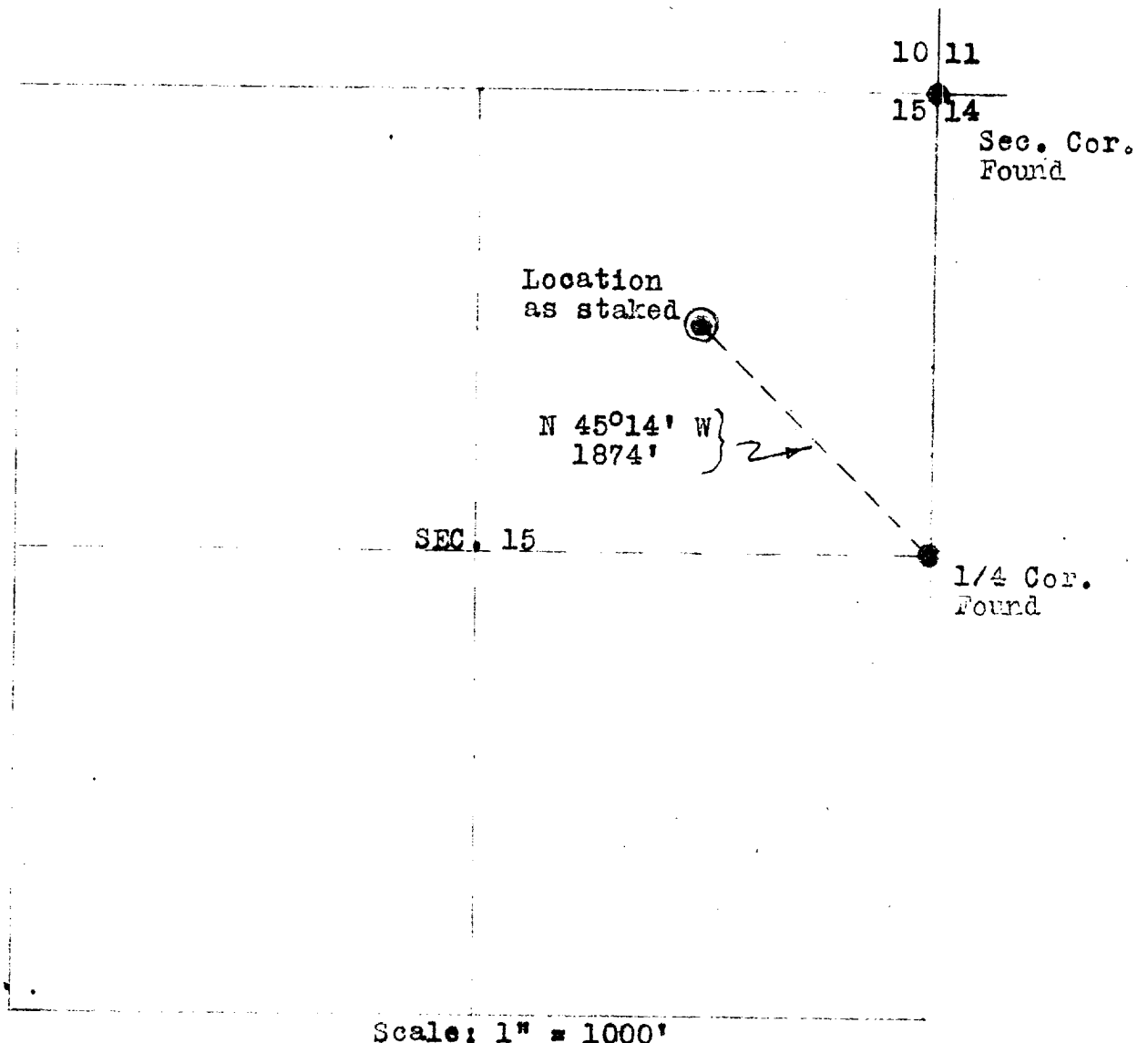


PLAT SHOWING PROPOSED LOCATION OF WELL
A. G. HILL -
GARDNER FEDERAL NO. 1

In the NE Quarter of Section 15
Twp 25 N, Rge 2 W, NMPM

Rio Arriba County, New Mexico



Elevation of Ground at Proposed Location: 7360 feet above sea level

State of New Mexico)
County of Bernalillo)^{ss}

I certify that the accompanying plat is a true and correct representation of an actual stadia survey made on the ground under my direct supervision on October 19 & 20, A. D. 1950.

Witness my hand and seal this 24th day of October, A. D. 1950.

D. R. W. Wager-Smith

D. R. W. Wager-Smith
Professional Engineer
and Land Surveyor

