

AMENDEDSUBMIT IN TRIPPLICATE*
(Other instructions on
reverse side)Form approved.
Budget Bureau No. 42-R1425.UNITED STATES
DEPARTMENT OF THE INTERIOR
GEOLOGICAL SURVEY

APPLICATION FOR PERMIT TO DRILL, DEEPEN, OR PLUG BACK

1a. TYPE OF WORK

DRILL ☒DEEPEN ☐PLUG BACK ☐

b. TYPE OF WELL

OIL
WELL ☒GAS
WELL ☐

OTHER

SINGLE
ZONE ☐MULTIPLE
ZONE ☒

2. NAME OF OPERATOR

Continental Oil Company

3. ADDRESS OF OPERATOR

200 North Wolcott, Casper, Wyoming 82601

4. LOCATION OF WELL (Report location clearly and in accordance with any State requirements.*)

At surface

710' FWL, 660' FWL

At proposed prod. zone

14. DISTANCE IN MILES AND DIRECTION FROM NEAREST TOWN OR POST OFFICE*

15. DISTANCE FROM PROPOSED*

LOCATION TO NEAREST
PROPERTY OR LEASE LINE, FT.
(Also to nearest drlg. unit line, if any)**1450'**

16. NO. OF ACRES IN LEASE

2560

18. DISTANCE FROM PROPOSED LOCATION*

TO NEAREST WELL, DRILLING, COMPLETED,
OR APPLIED FOR, ON THIS LEASE, FT.**350' (P.C.)**

19. PROPOSED DEPTH

7495'17. NO. OF ACRES ASSIGNED
TO THIS WELL**Undesign. Dak. 40****Undesign. Gallup 40**

20. ROTARY OR CABLE TOOLS

Rotary

21. ELEVATIONS (Show whether DF, RT, GR, etc.)

6838.5 GR

22. APPROX. DATE WORK WILL START*

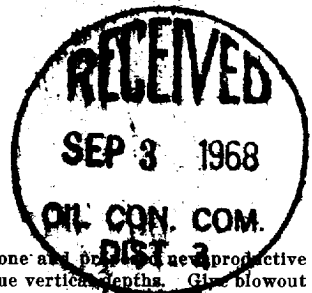
10-1-68

23.

PROPOSED CASING AND CEMENTING PROGRAM

SIZE OF HOLE	SIZE OF CASING	WEIGHT PER FOOT	SETTING DEPTH	QUANTITY OF CEMENT
12-1/4	8-5/8	24	200	100 sacks
7-7/8	5-1/2	14, 15.5, 17	7495	680 sacks

We propose to drill this well to an estimated depth of 7495' to further develop the Gallup and Dakota reservoirs and prove additional acreage for future development. If commercial production is encountered the well will be completed as follows: Set production casing as proposed above. Perforate and stimulate as indicated by logs. (A packer will be set approximately 150' above the Dakota to prevent communication between the two zones.) State approved producing equipment for downhole commingling in the tubing will be utilized to produce the two zones.



IN ABOVE SPACE DESCRIBE PROPOSED PROGRAM: If proposal is to deepen or plug back, give data on present productive zone and proposed new productive zone. If proposal is to drill or deepen directionally, give pertinent data on subsurface locations and measured and true vertical depths. Give blowout preventer program, if any.

24.

SIGNED

TITLE

Div. Admin. Section Chief

DATE

8-30-68

(This space for Federal or State office use)

PERMIT NO.

APPROVAL DATE

APPROVED BY

TITLE

DATE

CONDITIONS OF APPROVAL, IF ANY:

USGS (3) Farmington NMCC (2) RCB

*See Instructions On Reverse Side

Instructions

General: This form is designed for submitting proposals to perform certain well operations, as indicated, on all types of lands and leases for appropriate action by either a Federal or a State agency, or both, pursuant to applicable Federal and/or State laws and regulations. Any necessary special instructions concerning the use of this form and the number of copies to be submitted, particularly with regard to local, area, or regional procedures and practices, either are shown below or will be issued by, or may be obtained from, the local Federal and/or State office.

Item 1: If the proposal is to refer to the same reservoir at a different subsurface location or to a new reservoir, use this form with appropriate notations. Consult applicable State or Federal regulations concerning subsequent work proposals or reports on the well.

Item 4: If there are no applicable State requirements, locations on Federal or Indian land should be described in accordance with Federal requirements. Consult local State or Federal office for specific instructions.

Item 14: Needed only when location of well cannot readily be found by road from the land or lease description. A plat, or plats, separate or on this reverse side, showing the roads to, and the surveyed location of, the well, and any other required information, should be furnished when required by Federal or State agency offices.

Items 15 and 18: If well is to be, or has been directionally drilled, give distances for subsurface location of hole in any present or objective production zone.

Item 22: Consult applicable Federal or State regulations, or appropriate officials, concerning approval of the proposal before operations are started.

**NEW MEXICO OIL CONSERVATION COMMISSION
WELL LOCATION AND ACERAGE DEDICATION PLAT**

All distances must be from the outer boundaries of the Section

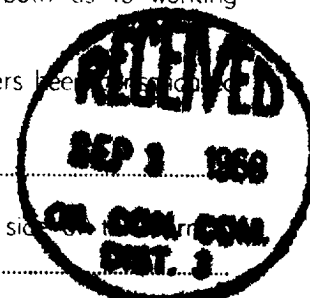
Operator CONTINENTAL OIL COMPANY		Lease Jicarilla 28		Well No. 2-6
Unit Letter D	Section 33	Township 25 NORTH	Range 4 WEST	County RIO ARriba
Actual Footage Location of Well: 710 feet from the NORTH line and 660 feet from the WEST line				
Ground Level Elev. 6838.5	Producing Formation Gallup-Dakota (Dual)	Pool Undesignated Gallup Undesignated Dakota	Dedicated Acreage G-40 D-40 Acres	

1. Outline the acreage dedicated to the subject well by colored pencil or hatchure marks on the plat below.
2. If more than one lease is dedicated to the well, outline each and identify the ownership thereof (both as to working interest and royalty).
3. If more than one lease of different ownership is dedicated to the well, have the interests of all owners been consolidated by communitization, unitization, force-pooling, etc?

() Yes () No If answer is "yes," type of consolidation _____

If answer is "no," list the owners and tract descriptions which have actually consolidated. (Use reverse side if necessary.) _____

No allowable will be assigned to the well until all interests have been consolidated (by communitization, unitization, forced-pooling, or otherwise) or until a non standard unit, eliminating such interests, has been approved by the Commission.



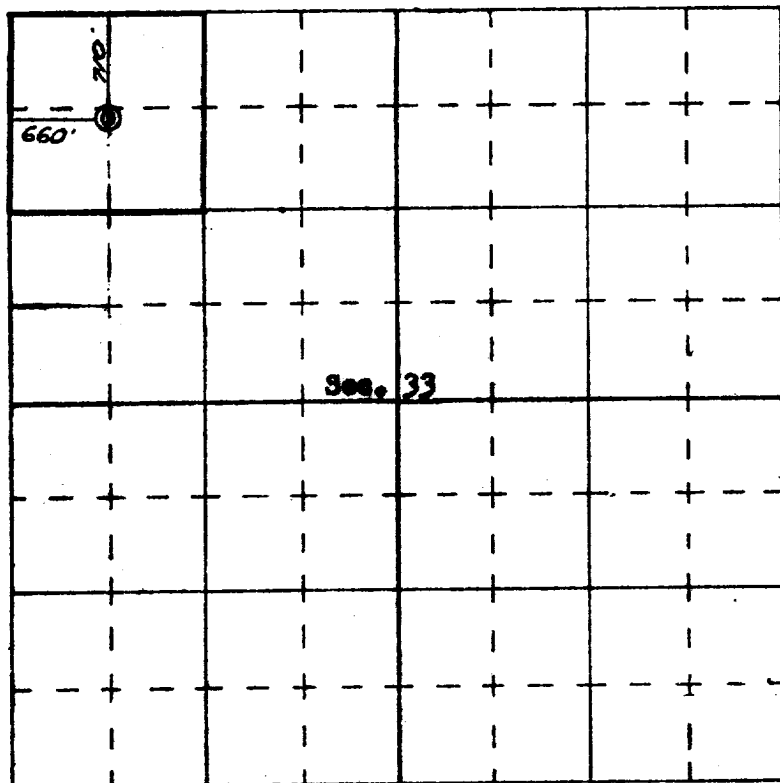
CERTIFICATION

I hereby certify that the information contained herein is true and complete to the best of my knowledge and belief.

Harry W. Potter
Name
Harry W. Potter
Position
Acting Admin. Section Chief
Company
Continental Oil Company
Date
8-30-68

I hereby certify that the well location shown on this plat was plotted from field notes of actual surveys made by me or under my supervision, and that the same is true and correct to the best of my knowledge and belief.

27 August, 1968
Date Surveyed
James P. Leese
Registered Professional Engineer
and/or Land Surveyor
JAMES P. LEESE
1533
Certificate No.



N

SCALE—4 INCHES EQUALS 1 MILE

