

## NEW MEXICO OIL CONSERVATION COMMISSION

## WELL LOCATION AND ACERAGE DEDICATION PLAT

RECEIVED

APR 26 1971

All distances must be from the outer boundaries of the Section

Operator

BENSON-MONTIN-GREER

Lease

CANADA OJITOS UNIT

Well No.

15 (C-5)

Unit Letter

Section

Township

Range

County

C

5

25 NORTH

1 EAST

RIO ARRIBA

Actual Footage Location of Well:

900

feet from the

NORTH

1700

feet from the

WEST

line

Ground Level Elev.

Producing Formation

Plat

Dedicated Acreage

7470.0

Mancoos

West Puerto Chiquito

320

Acres

1. Outline the acreage dedicated to the subject well by colored pencil or hatchure marks on the plat below.
2. If more than one lease is dedicated to the well, outline each and identify the ownership thereof (both as to working interest and royalty).
3. If more than one lease of different ownership is dedicated to the well, have the interests of all owners been consolidated by communitization, unitization, force-pooling, etc?
 

( ) Yes ( ) No If answer is "yes," type of consolidation

If answer is "no," list the owners and tract descriptions which have actually consolidated. (Use reverse side of this form if necessary)

No allowable will be assigned to the well until all interests have been consolidated (by communitization, unitization, forced-pooling, or otherwise) or until a non standard unit, eliminating such interests, has been approved by the Commission.

## CERTIFICATION

I hereby certify that the information contained herein is true and complete to the best of my knowledge and belief.

BENSON-MONTIN-GREER OILS, INC.

Name

Signature

Vice-President

Company

April 16, 1971

Date

RECEIVED

MAY 4 1971

I hereby certify that the well location shown on this plat was plotted from field notes of actual surveys made by me or under my supervision, and that the same is true and correct to the best of my knowledge and belief.

13 April, 1971

Date Surveyed

Registered Professional Engineer  
and/or Land Surveyor

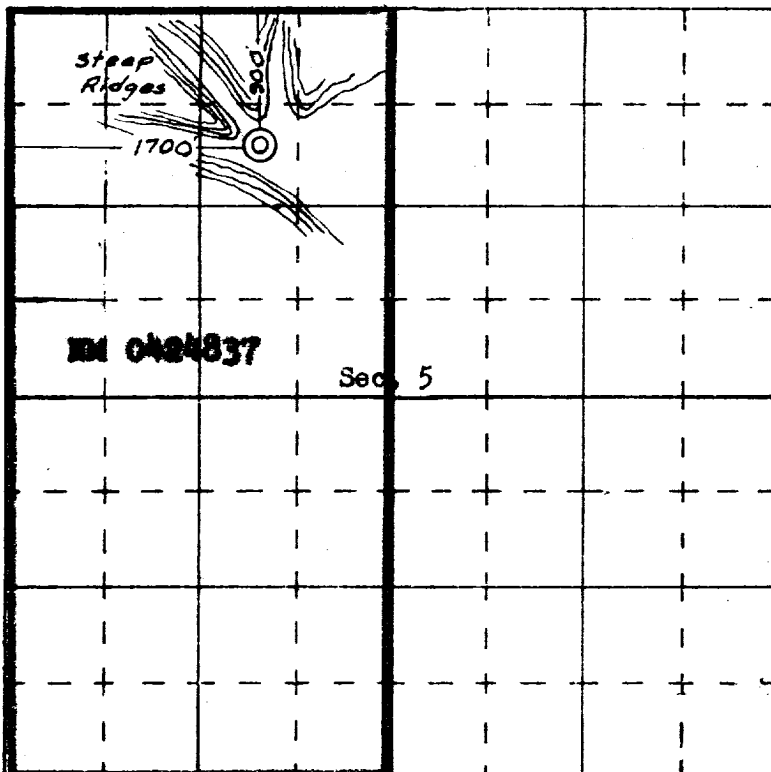
JAMES P. HENSE

Certificate No.

1463

NEW MEXICO

LAND SURVEYING



SCALE—4 INCHES EQUALS 1 MILE

SAN JUAN ENGINEERING COMPANY, FARMINGTON, N. M.