

UNITED STATES
DEPARTMENT OF THE INTERIOR
GEOLOGICAL SURVEY

30-039-20422

5. LEASE DESIGNATION AND SERIAL NO.

66

6. IF INDIAN, ALLOTTEE OR TRIBE NAME

Jicarilla Apache

7. UNIT AGREEMENT NAME

8. FARM OR LEASE NAME

Jicarilla 28

9. WELL NO.

12

10. FIELD AND POOL, OR WILDCAT
W. Lindrith-Designated
Gallup and Dakota11. SEC., T., R., M., OR BLK.
AND SURVEY OR AREA

Sec. 27, T25N, R4W

12. COUNTY OR PARISH 13. STATE

Rio Arriba New Mexico

APPLICATION FOR PERMIT TO DRILL, DEEPEN, OR PLUG BACK

1a. TYPE OF WORK

DRILL ☒DEEPEN ☐PLUG BACK ☐

b. TYPE OF WELL

OIL
WELL ☒GAS
WELL ☐

OTHER

SINGLE
ZONE ☐MULTIPLE
ZONE ☒

2. NAME OF OPERATOR

Continental Oil Company

3. ADDRESS OF OPERATOR

152 North Durbin, Casper, Wyoming 82601

4. LOCATION OF WELL (Report location clearly and in accordance with any State requirements.)*

At surface

N 1/4 SW 1/4 Sec. 27, T25N, R4W (Unit Letter "L")

At proposed prod. zone

14. DISTANCE IN MILES AND DIRECTION FROM NEAREST TOWN OR POST OFFICE*

15. DISTANCE FROM PROPOSED*

LOCATION TO NEAREST
PROPERTY OR LEASE LINE, FT.
(Also to nearest drill hole line, if any)

16. NO. OF ACRES IN LEASE

2560

17. NO. OF ACRES ASSIGNED
TO THIS WELL

40

18. DISTANCE FROM PROPOSED LOCATION*

TO NEAREST WELL, DRILLING, COMPLETED,
OR APPLIED FOR, ON THIS LEASE, FT.

19. PROPOSED DEPTH

7675'

20. ROTARY OR CABLE TOOLS

Rotary

21. ELEVATIONS (Show whether DP, RT, GR, etc.)

6869' GR

22. APPROX. DATE WORK WILL START*

9-8-71

23.

PROPOSED CASING AND CEMENTING PROGRAM

SIZE OF HOLE	SIZE OF CASING	WEIGHT PER FOOT	SETTING DEPTH	QUANTITY OF CEMENT
12 1/4"	8 5/8"	24.5	200'	to surface
7 7/8"	4 1/2"	10.5	7745'	885 sacks (2-stage)

We propose to drill this well to further develop the Gallup and Dakota reserves. No coring or DST's are planned. All appropriate logs will be run. The rig will be equipped with a blowout preventer. If commercial production is encountered the well will be completed by running production casing as indicated above, perforated, stimulated, and will be dually completed and commingled as approved by New Mexico Oil Conservation Commission.

USGS Durango(6) File(2) OIL CON. COM.

SEP 11 1971

DIST. 3

IN ABOVE SPACE DESCRIBE PROPOSED PROGRAM. If proposal is to deepen or plug back, give data on present productive zone and proposed new productive zone. If proposal is to drill or deepen directionally, give pertinent data on subsurface locations and measured and true vertical depths. Give blowout preventer program, if any.

24.

Original Signed By:

J. A. UBBEN

SIGNED

TITLE Administrative Supervisor

DATE 9-8-71

(This space for Federal or State office use)

PERMIT NO.

APPROVAL DATE

APPROVED BY

TITLE

DATE

CONDITIONS OF APPROVAL, IF ANY:

*See Instructions On Reverse Side

**NEW MEXICO OIL CONSERVATION COMMISSION
WELL LOCATION AND ACERAGE DEDICATION PLAT**

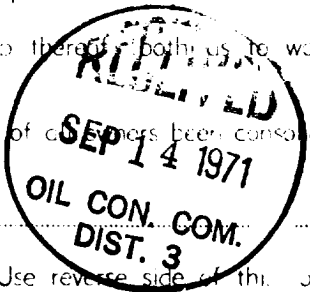
All distances must be from the outer boundaries of the Section

Operator CONTINENTAL OIL COMPANY				County JICARILLA		Well No. 28	
Unit Letter L	Section 27	Township 25 NORTH	Range 4 EAST	County BIO ARriba			
Actual Footage Location of Well:							
1850	feet from the	SOUTH	boundary	790	feet from the	EAST	line
Ground Level Elev. 6869.0		Producing Formation		Dedicated Acres 40		Acres	

1. Outline the acreage dedicated to the subject well by colored pencil or hatchure marks on the plat below
2. If more than one lease is dedicated to the well, outline each and certify the ownership thereof (both as to working interest and royalty).
3. If more than one lease of different ownership is dedicated to the well, have the interests of all owners been consolidated by communization, unitization, force-pooling, etc?
☐ Yes ☐ No If answer is "yes," type of consolidation _____

If answer is "no," list the owners and tract descriptions which have actually consolidated (Use reverse side of this form if necessary.) _____

No allowable will be assigned to the well until all interests have been consolidated (by communization, unitization, forced-pooling, or otherwise) or until a non standard unit, eliminating such interests, has been approved by the Commission.



CERTIFICATION

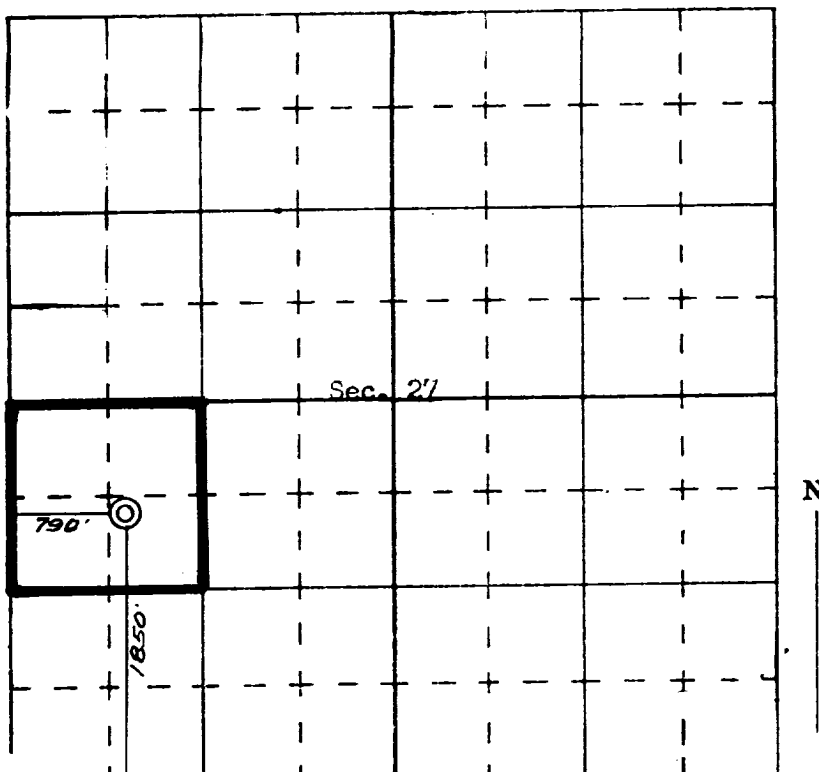
I hereby certify that the information contained herein is true and complete to the best of my knowledge and belief.

Name _____
 Position _____
 Company _____
 Date _____

I hereby certify that the well location shown on this plat was plotted from field notes of actual surveys made by me or under my supervision, and that the same is true and correct to the best of my knowledge and belief.

24 August, 1971
 Date Surveyed

 Registered Professional Engineer
 and/or Land Surveyor
JAMES P. LEENE
 1463
 Certificate No



1 INCH = 400 FEET