

EWELL N. WALSH  
PETROLEUM ENGINEER CONSULTANT  
EXECUTIVE BLDG. - 413 W. MAIN  
P. O. BOX 254  
FARMINGTON, NEW MEXICO  
87401

TELEPHONE BUS. 325-8203

January 5, 1972

Mr. George M. Hatch  
General Council  
New Mexico Oil Conservation Commission  
P. O. Box 2088  
Santa Fe, New Mexico 87501

Ref: Manning Gas and Oil Company,  
Operator, Apache No. 100,  
Gallup-Dakota Dual,  
Rio Arriba County, New Mexico

Dear Mr. Hatch:

The enclosed copy of a letter from San Juan Engineering Company set forth the portion of Section 3-T24N-R4W that is designated as Lot 1 and indicates the amount of acreage in Lot 1.

At the time that Mr. Emery Arnold contacted you by telephone concerning the amount of acreage to be assigned to the well, it was assumed that Lot 1 would only be 32 acres. Also, at that time it was agreeable to change the acreage dedication from 72 acres to 32 acres or the acreage contained in the legal subdivision of Lot 1.

The reason for this letter is to be certain that the advertisement for the requested hearing will be correct and that the hearing will be held in view of the correct amount of acreage in Lot 1.

Thank you for your cooperation and consideration in this matter.

Very truly yours,

  
Ewell N. Walsh

ENW:lt

cc:Mr. Emery Arnold, NMOCC, Aztec (w/encl)



TELEPHONE 702 358-8503

[illegible]

**Abstract**

[illegible]

and that involved on or at least this will appear, and  
but I cannot be fully satisfied with the results of the  
the same matter and I do not wish to be misled and so.

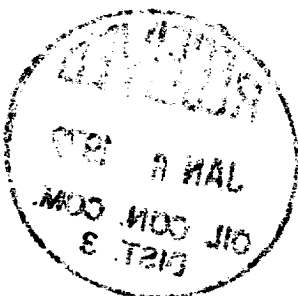
at approximately one mile from the base of the south  
ridge

2009 2010 2011

2014-12-13 13:37:23

1997, 1998, 1999, 2000, 2001, 2002, 2003, 2004, 2005, 2006, 2007, 2008, 2009, 2010, 2011, 2012, 2013, 2014, 2015, 2016, 2017, 2018, 2019, 2020, 2021, 2022, 2023, 2024, 2025, 2026, 2027, 2028, 2029, 2030, 2031, 2032, 2033, 2034, 2035, 2036, 2037, 2038, 2039, 2040, 2041, 2042, 2043, 2044, 2045, 2046, 2047, 2048, 2049, 2050, 2051, 2052, 2053, 2054, 2055, 2056, 2057, 2058, 2059, 2060, 2061, 2062, 2063, 2064, 2065, 2066, 2067, 2068, 2069, 2070, 2071, 2072, 2073, 2074, 2075, 2076, 2077, 2078, 2079, 2080, 2081, 2082, 2083, 2084, 2085, 2086, 2087, 2088, 2089, 2090, 2091, 2092, 2093, 2094, 2095, 2096, 2097, 2098, 2099, 2100, 2101, 2102, 2103, 2104, 2105, 2106, 2107, 2108, 2109, 2110, 2111, 2112, 2113, 2114, 2115, 2116, 2117, 2118, 2119, 2120, 2121, 2122, 2123, 2124, 2125, 2126, 2127, 2128, 2129, 2130, 2131, 2132, 2133, 2134, 2135, 2136, 2137, 2138, 2139, 2140, 2141, 2142, 2143, 2144, 2145, 2146, 2147, 2148, 2149, 2150, 2151, 2152, 2153, 2154, 2155, 2156, 2157, 2158, 2159, 2160, 2161, 2162, 2163, 2164, 2165, 2166, 2167, 2168, 2169, 2170, 2171, 2172, 2173, 2174, 2175, 2176, 2177, 2178, 2179, 2180, 2181, 2182, 2183, 2184, 2185, 2186, 2187, 2188, 2189, 2190, 2191, 2192, 2193, 2194, 2195, 2196, 2197, 2198, 2199, 2200, 2201, 2202, 2203, 2204, 2205, 2206, 2207, 2208, 2209, 2210, 2211, 2212, 2213, 2214, 2215, 2216, 2217, 2218, 2219, 2220, 2221, 2222, 2223, 2224, 2225, 2226, 2227, 2228, 2229, 2230, 2231, 2232, 2233, 2234, 2235, 2236, 2237, 2238, 2239, 2240, 2241, 2242, 2243, 2244, 2245, 2246, 2247, 2248, 2249, 2250, 2251, 2252, 2253, 2254, 2255, 2256, 2257, 2258, 2259, 2260, 2261, 2262, 2263, 2264, 2265, 2266, 2267, 2268, 2269, 2270, 2271, 2272, 2273, 2274, 2275, 2276, 2277, 2278, 2279, 2280, 2281, 2282, 2283, 2284, 2285, 2286, 2287, 2288, 2289, 2290, 2291, 2292, 2293, 2294, 2295, 2296, 2297, 2298, 2299, 2300, 2301, 2302, 2303, 2304, 2305, 2306, 2307, 2308, 2309, 2310, 2311, 2312, 2313, 2314, 2315, 2316, 2317, 2318, 2319, 2320, 2321, 2322, 2323, 2324, 2325, 2326, 2327, 2328, 2329, 2330, 2331, 2332, 2333, 2334, 2335, 2336, 2337, 2338, 2339, 2340, 2341, 2342, 2343, 2344, 2345, 2346, 2347, 2348, 2349, 2350, 2351, 2352, 2353, 2354, 2355, 2356, 2357, 2358, 2359, 2360, 2361, 2362, 2363, 2364, 2365, 2366, 2367, 2368, 2369, 2370, 2371, 2372, 2373, 2374, 2375, 2376, 2377, 2378, 2379, 2380, 2381, 2382, 2383, 2384, 2385, 2386, 2387, 2388, 2389, 2390, 2391, 2392, 2393, 2394, 2395, 2396, 2397, 2398, 2399, 2400, 2401, 2402, 2403, 2404, 2405, 2406, 2407, 2408, 2409, 2410, 2411, 2412, 2413, 2414, 2415, 2416, 2417, 2418, 2419, 2420, 2421, 2422, 2423, 2424, 2425, 2426, 2427, 2428, 2429, 2430, 2431, 2432, 2433, 2434, 2435, 2436, 2437, 2438, 2439, 2440, 2441, 2442, 2443, 2444, 2445, 2446, 2447, 2448, 2449, 2450, 2451, 2452, 2453, 2454, 2455, 2456, 2457, 2458, 2459, 2460, 2461, 2462, 2463, 2464, 2465, 2466, 2467, 2468, 2469, 2470, 2471, 2472, 2473, 2474, 2475, 2476, 2477, 2478, 2479, 2480, 2481, 2482, 2483, 2484, 2485, 2486, 2487, 2488, 2489, 2490, 2491, 2492, 2493, 2494, 2495, 2496, 2497, 2498, 2499, 2500, 2501, 2502, 2503, 2504, 2505, 2506, 2507, 2508, 2509, 2510, 2511, 2512, 2513, 2514, 2515, 2516, 2517, 2518, 2519, 2520, 2521, 2522, 2523, 2524, 2525, 2526, 2527, 2528, 2529, 2530, 2531, 2532, 2533, 2534, 2535, 2536, 2537, 2538, 2539, 2540, 2541, 2542, 2543, 2544, 2545, 2546, 2547, 2548, 2549, 2550, 2551, 2552, 2553, 2554, 2555, 2556, 2557, 2558, 2559, 2560, 2561, 2562, 2563, 2564, 2565, 2566, 2567, 2568, 2569, 2570, 2571, 2572, 2573, 2574, 2575, 2576, 2577, 2578, 2579, 2580, 2581, 2582, 2583, 2584, 2585, 2586, 2587, 2588, 2589, 2590, 2591, 2592, 2593, 2594, 2595, 2596, 2597, 2598, 2599, 2600, 2601, 2602, 2603, 2604, 2605, 2606, 2607, 2608, 2609, 2610, 2611, 2612, 2613, 2614, 2615, 2616, 2617, 2618, 2619, 2620, 2621, 2622, 2623, 2624, 2625, 2626, 2627, 2628, 2629, 2630, 2631, 2632, 2633, 2634, 2635, 2636, 2637, 2638, 2639, 2640, 2641, 2642, 2643, 2644, 2645, 2646, 2647, 2648, 2649, 2650, 2651, 2652, 2653, 2654, 2655, 2656, 2657, 2658, 2659, 2660, 2661, 2662, 2663, 2664, 2665, 2666, 2667, 2668, 2669, 2670, 2671, 2672, 2673, 2674, 2675, 2676, 2677, 2678, 26

(10050) 10050 10050 10050 10050 10050 10050 10050 10050 10050



# San Juan Engineering Company

WELL LOCATIONS - ROADS - SUBDIVISIONS - POWER LINES - LAND SURVEYS - PIPE LINES  
CONSULTING - GENERAL ENGINEERING - DESIGN - REPORTS - MUNICIPAL

REGISTERED PROFESSIONAL ENGINEERING SERVICE  
IN NEW MEXICO, COLORADO, UTAH, ARIZONA, OKLAHOMA, WYOMING

## PHONES

HOME OFFICE  
FARMINGTON, N. M. . . . 325-7536  
NIGHT . . . . 325-2670  
MUSKOGEE, OKLA. . . . 687-6812

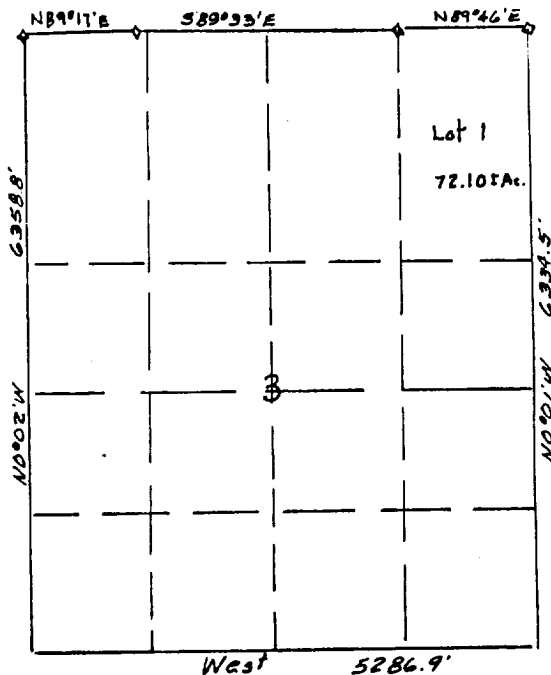
P. O. BOX 752  
FARMINGTON, NEW MEXICO  
28 December, 1971

Walsh Engineering & Production Corp.  
413 West Main  
Farmington  
New Mexico 87401

Dear Sir:

As shown on a plat of Survey by R. E. De Bolt and Assoc., Consulting Engineers, of a portion of T24N, R4W, N.M.P.M., Rio Arriba County, New Mexico, surveyed in October, 1955; Lot 1 of Section 3 of T24N, R4W, contains 72.10 Acres, more or less.

Lot 1 of Section 3 would be determined on this survey plat according to the G. L.O.L methods for subdividing a section and would be the NE/4 NE/4 of said Section.



*James P. Leese*  
James P. Leese  
Professional Engineer and  
Land Surveyor  
N. Mex. Reg. No. 1463