

UNITED STATES
DEPARTMENT OF THE INTERIOR
BUREAU OF LAND MANAGEMENT

Sundry Notices and Reports on Wells

1. Type of Well

GAS

2. Name of Operator

MERIDIAN OIL

3. Address & Phone No. of Operator

PO Box 4289, Farmington, NM 87499 (505) 326-9700

4. Location of Well, Footage, Sec., T, R, M

1100' FNL, 800' FEL, Sec.4, T-25-N, R-6-W, NMPM

5. Lease Number

SF-078883

6. If Indian, All. or
Tribe Name

7. Unit Agreement Name

Canyon Largo Unit

8. Well Name & Number

Canyon Largo U #169

9. API Well No.

30-039-20533

10. Field and Pool

So. Blanco Pict. Cliffs/
Otero Chacra

11. County and State

Rio Arriba Co, NM

12. CHECK APPROPRIATE BOX TO INDICATE NATURE OF NOTICE, REPORT, OTHER DATA

Type of Submission

☒ Notice of Intent☐ Subsequent Report☐ Final Abandonment

Type of Action

☒ Abandonment☐ Recompletion☐ Plugging Back☐ Casing Repair☐ Altering Casing☐ Other -☐ Change of Plans☐ New Construction☐ Non-Routine Fracturing☐ Water Shut off☐ Conversion to Injection

13. Describe Proposed or Completed Operations

It is intended to plug and abandon the subject well according to the attached procedure and wellbore diagram.

14. I hereby certify that the foregoing is true and correct.

Signed *Regan Sharp* (ROS3) Title Regulatory Administrator Date 3/7/96

(This space for Federal or State Office use)

APPROVED BY _____ Title _____ Date _____

CONDITION OF APPROVAL, if any:

RECEIVED
MAR 19 1996
CIVIL ENGINEER
BUREAU OF LAND MANAGEMENT

APPROVED

NMOC

Canyon Largo Unit #169

Current

So. Blanco Pictured Cliffs/Otero Chacra Dual
NE Section 4, T-25-N, R-6-W Rio Arriba Co. NM
Latitude/Longitude: 36.432388 / 107.465912

Today's Date: 02-19-96
Spud: 9-18-72
Completed: 1-11-73

Nacimiento @ 185'

13-3/4" Hole

9-5/8", 32.3#, H-40, 8rd, Csg set @ 141',
Cmt w/142 cf, (Circulated to surface)

Ojo Alamo @ 2188'

Kirtland @ 2370'

Fruitland @ 2658'

Pictured Cliffs @ 2864'

Lewis @ 2958'

8-3/4" Hole

TOC @ 1650' (TS)

Pictured Cliffs Perforations:
2892' - 2904', Total 18 holes

Changed drill bits from 8-3/4" to 6-3/4" at 2950'
2-7/8", 6.4#, J-55, 10rd, Casing set @ 2954',
Cmt w/380 cf

Chacra @ 3722'

6-3/4" Hole

Chacra Perforations:
2740' - 3850', Total 48 holes

TD 3895'

2-7/8", 6.4#, J-55, 10rd, Csg set @ 3889',
Cmt w/330 cf

Canyon Largo Unit #169
Proposed
So. Blanco Pictured Cliffs/Otero Chacra Dual
NE Section 4, T-25-N, R-6-W Rio Arriba Co. NM
Latitude/Longitude: 36.432388 / 107.465912

Todays Date: 02-19-96
Spud: 9-18-72
Completed: 1-11-73

Nacimiento @ 185'

Ojo Alamo @ 2188'

Kirtland @ 2370'

Fruitland @ 2658'

Pictured Cliffs @ 2864'

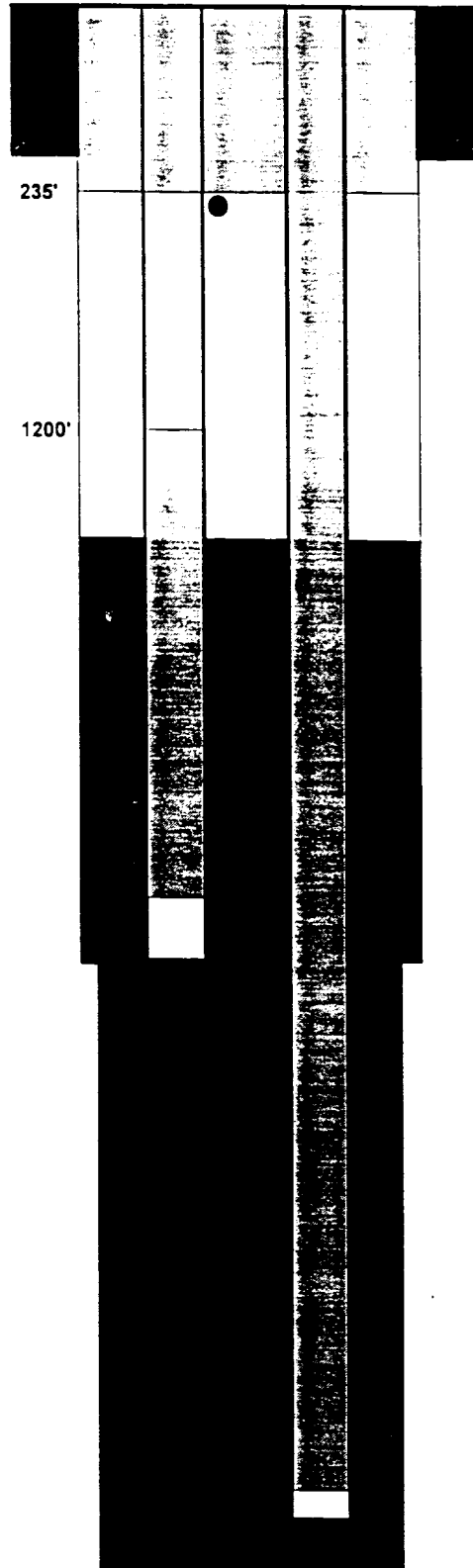
Lewis @ 2958'

Chacra @ 3722'

13-3/4" Hole

8-3/4" Hole

6-3/4" Hole



Plug #3: 235' - Surface,
Cmt w/75 sx Class B Cmt

9-5/8", 32.3#, H-40, 8rd, Csg set @ 141',
Cmt w/142 cf, (Circulated to surface)
Perforate @ 235'

Plug #2: 2904' - 1200',
Cmt w/47 sx Class B Cmt

TOC @ 1650' (TS)

Plug #1: 3850' - Surface',
Cmt w/105 sx Class B Cmt

Pictured Cliffs Perforations:
2892' - 2904', Total 18 holes

Changed drill bits from 8-3/4" to 6-3/4" at 2950'
2-7/8", 6.4#, J-55, 10rd, Casing set @ 2954',
Cmt w/380 cf

Chacra Perforations:
2740' - 3850', Total 48 holes

2-7/8", 6.4#, J-55, 10rd, Csg set @ 3889',
Cmt w/330 cf

TD 3895'

PLUG & ABANDONMENT PROCEDURE

Canyon Largo Unit #169
So. Blanco Pictured Cliffs/Otero Chacra Dual
NE Section 4, T-25-N, R-06-W
Rio Arriba Co., New Mexico

Note: All cement volumes use 100% excess outside pipe and 50' excess inside pipe. The stabilizing wellbore fluid will be 8.3 ppg, sufficient to balance all exposed formation pressures.

1. Prepare blow pit. Comply to all NMOCD, BLM, and MOI regulations.
2. Conduct safety meeting for all personnel on location. NU relief line. Blow down well and kill with water as necessary.
3. Install cementing valve on Chacra casing. Open bradenhead valve. Establish rate down 2-7/8" casing with 25 bbls water. Record pump rate & pressure. Monitor bradenhead for flow. If no flow or blow pump 16 frac balls (total of 48 perforations) in additional water and monitor pressure, rate, and volumes pumped to confirm perforations taking water and there is not a casing leak. If there are indications of a casing leak, then use 1-1/4" tubing to plug well.
4. **Plug #1 (Chacra, Lewis, Pictured Cliffs, Fruitland, Kirtland & Ojo Alamo tops, 3850' - Surface):** Establish rate into Chacra perforations with water. Mix and pump 105 sx class B cement. Bull head down 2-7/8" casing from surface. Do not displace. Shut in casing valve and WOC. RIH with wireline gauge ring and tag top of cement plug. POOH with wireline. Top off casing with cement as needed.
5. Install cementing valve on Pictured Cliffs casing. Open bradenhead valve. Establish rate down 2-7/8" casing with 20 bbls water. Record pump rate & pressure. Monitor bradenhead for flow. If no flow or blow pump 6 frac balls (total 18 perforations) in additional water and monitor pressure, rate, and volumes pumped to confirm perforations taking water and there is not a casing leak. If there are indications of a casing leak, then use 1-1/4" tubing to plug well.
6. **Plug #2 (Pictured Cliffs, Fruitland, Kirtland & Ojo Alamo tops, 2904' - 1200'):** Establish rate into Pictured Cliffs perforations with water. Mix and pump 47 sx class B cement. Bull head down 2-7/8" casing from surface. Displace cement to 1200'. Shut in casing valve and WOC. RIH with wireline gauge ring and tag top of cement plug. POOH with wireline.
7. **Plug #3 (Nacimiento top, 235' - Surface):** Perforate 2 holes @ 235'. Establish circulation out bradenhead valve. Mix approximately 75 sx class B cement and pump down 2-7/8" casing. Circulate good cement out bradenhead valve. Shut in well. WOC.
8. ND BOP and cut off wellhead below surface casing flange. Install P&A marker to comply with regulations. RD, MOL, cut off anchors, and restore location.

Recommended: 

Operations Engineer

Approval: _____

Production Superintendent