

UNITED STATES
DEPARTMENT OF THE INTERIOR
BUREAU OF LAND MANAGEMENT

FORM APPROVED
OMB NO. 1004-0135
Expires: November 30, 2000

SUNDRY NOTICES AND REPORTS ON WELLS

Do not use this form for proposals to drill or to re-enter an abandoned well. Use Form 3160-3 (APD) for such proposals.

SUBMIT IN TRIPLICATE - Other instructions on reverse side

1. Type of Well

☐ Oil Well ☒ Gas Well ☐ Other

2. Name of Operator

ENERGEN RESOURCES CORPORATION

3a. Address

2198 Bloomfield Highway, Farmington, NM 87401

3b. Phone No. (include area code)

505-325-6800

4. Location of Well (Footage, Sec., T., R., M., or Survey Description)

1650' FSL, 1650' FEL, Sec. 20, T25N, R5W, N.M.P.M.

5. Lease Serial No.

Jic Cont 67

6. If Indian, Allottee or Tribe Name

Jicarilla Apache

7. If Unit or CA/Agreement, Name and/or No.

8. Well Name and No.

Jicarilla 67 13

9. API Well No.

30-039-20545

10. Field and Pool, or Exploratory Area

Otero Chacra

11. County or Parish, State

Rio Arriba NM

12. CHECK APPROPRIATE BOX(ES) TO INDICATE NATURE OF NOTICE, REPORT, OR OTHER DATA

TYPE OF SUBMISSION

☒ Notice of Intent

☐ Subsequent Report

☐ Final Abandonment Notice

TYPE OF ACTION

☐ Acidize

☐ Alter Casing

☐ Casing Repair

☐ Change Plans

☐ Convert to Injection

☐ Deepen

☐ Fracture Treat

☐ New Construction

☒ Plug and Abandon

☐ Plug Back

☐ Production (Start Resume)

☐ Reclamation

☐ Recomplete

☐ Temporarily Abandon

☐ Water Disposal

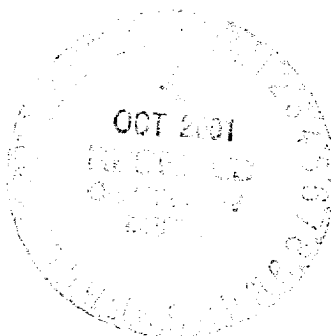
☐ Water Shut-Off

☐ Well Integrity

☐ Other _____

13. Describe Proposed or Completed Operation (clearly state all pertinent details, including estimated starting date of any proposed work and approximate duration thereof. If the proposal is to deepen directionally or recomplete horizontally, give subsurface locations and measured and true vertical depths of all pertinent markers and zones. Attach the Bond under which the work will be performed or provide the Bond No. on file with BLM/BIA. Required subsequent reports shall be filed within 30 days following completion of the involved operations. If the operation results in a multiple completion or recompletion in a new interval, a Form 3160-4 shall be filed once testing has been completed. Final Abandonment Notices shall be filed only after all requirements, including reclamation, have been completed, and the operator has determined that the final site is ready for final inspection.)

Energen intends to plug and abandon this well as per the attached plugging procedure.



14. I hereby certify that the foregoing is true and correct

Name (Printed/Typed)

Don Graham

Title

Production Superintendent

Date 9/25/01

THIS SPACE FOR FEDERAL OR STATE OFFICE USE

Approved by

/s/ Brian W. Davis

Title

Lands and Mineral Resources

Date

OCT 24 2001

Conditions of approval, if any, are attached. Approval of this notice does not warrant or certify that the applicant holds legal or equitable title to those rights in the subject lease which would entitle the applicant to conduct operations thereon.

Office

Title 18 U.S.C. Section 1001, and Title 43 U.S.C. Section 1212, makes it a crime for any person knowingly and willfully to make to any department or agency of the United States any false, fictitious or fraudulent statements or representations as to any matter within its jurisdiction.

PLUG & ABANDONMENT PROCEDURE

09/13/01

Jicarilla 67 #13

Otero Chacra

1650' FSL & 1650' FEL, Section 20, T-25-N, R-5-W

Rio Arriba Co., New Mexico, API #30-039-20545

Long: / Lat:

Note: All cement volumes use 100% excess outside pipe and 50' excess inside. The stabilizing wellbore fluid will be 8.3 ppg, sufficient to balance all exposed formation pressures. All cement is ASMT Type II mixed at 15.6 ppg with a yield of 1.18 cf/sx.

1. Install and test rig anchors. Prepare blow pit. Comply with all NMOCD, BLM and Energen safety rules and regulations. MOL and RU daylight pulling unit. Blow well down; kill with water if necessary. ND wellhead and NU BOP and stripping head; test BOP.
2. TOH and tally 110 joints 1-1/4" tubing, total 3617'. If necessary LD tubing and PU workstring. Round-trip 2-7/8" gauge ring to 3538'.
3. **Plug #1 (Chacra perforations, 3538' – 3438')**: Set 2-7/8" wireline CIBP at 3538'. TIH with tubing and tag CIBP. Load casing with water and circulate well clean. Pressure test casing to 500#. If casing does not test, then spot or tag subsequent plugs as appropriate. Mix 10 sxs cement and spot a balanced plug inside casing above the CIBP, to isolate the Chacra perforations. PUH to 2770'.
4. **Plug #2 (Pictured Cliffs top, 2770' – 2670')**: Mix 10 sxs cement and spot balanced plug inside casing to cover the PC top. TOH with tubing.
5. **Plug #3 (Fruitland, Kirtland and Ojo Alamo tops, 2550' – 2105')**: Perforate 3 squeeze holes at 2550'. Establish rate into squeeze holes if casing tested. Set a 2-7/8" retainer at 2500'. Establish rate into squeeze holes. Mix 168 sxs cement and squeeze 154 sxs cement outside 2-7/8" casing and leave 14 sxs cement inside casing to cover through the Ojo Alamo top. TOH with tubing.
6. **Plug #4 (Nacimiento top, 1320' – 1220')**: Perforate 2 squeeze holes at 1320'. Establish rate into squeeze holes if casing tested. Set 2-7/8" wireline retainer at 1270'. Establish rate into squeeze holes. Mix 40 sxs cement and squeeze 35 sxs cement outside 2-7/8" casing and leave 5 sxs cement inside casing to cover Nacimiento top. TOH and LD tubing.
7. **Plug #5 (8-5/8" casing shoe, 192' - Surface)**: Perforate 2 squeeze holes at 192'. Establish circulation out bradenhead. Mix and pump approximately 80 cement down 2-7/8" casing, circulate cement out bradenhead valve. SI and WOC.
8. ND BOP and cut off casing below surface. Install P&A marker with cement to comply with regulations. RD, move off location, cut off anchors and restore location.

Jicarilla 67 #13

Current

Otero Chacra

SE, Section 20, T-25-N, R-5-W, Rio Arriba County, NM

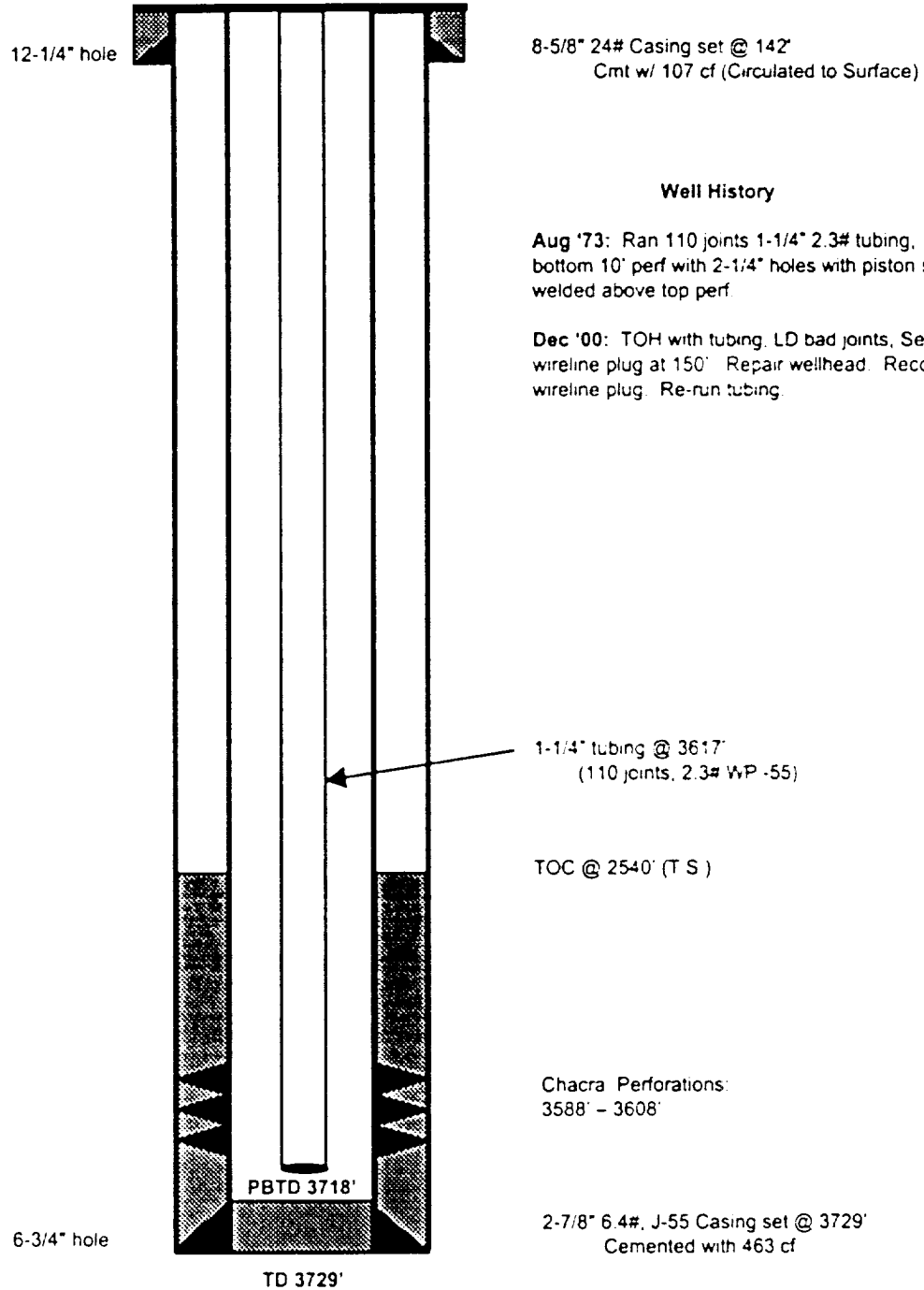
API #30-039-20545

Today's Date: 09/13/01

Spud: 8/31/72

Completed: 9/26/72

Elevation: 6671' GL



Jicarilla 67 #13

Proposed P&A

Otero Chacra

SE, Section 20, T-25-N, R-5-W, Rio Arriba County, NM

API #30-039-20545

Today's Date: 09/13/01
Spud: 8/31/72
Completed: 9/26/72
Elevation: 6671' GL

12-1/4" hole

8-5/8" 24# Casing set @ 142'
Cmt w/ 107 cf (Circulated to Surface)

Perforate @ 192'

Plug #5: 192' – Surface
Cement with 80 sxs

Nacimiento @ 1270'

Cmt Retainer @ 1270'

Perforate @ 1320'

Plug #4: 1320' – 1220'
Cement with 40 sxs,
35 outside casing
and 5 inside.

Ojo Alamo @ 2155'

Plug #3: 2550' - 2105'
Cement with 168 sxs,
154 outside casing
and 14 inside.

Kirtland @ 2320'

Cmt Retainer @ 2500'

Fruitland @ 2550'

Perforate @ 2550'

TOC @ 2540' (T S)

Pictured Cliffs @ 2720'

Plug #2: 2770' – 2670'
Cement with 10 sxs

Chacra @ 3575'

Set CIBP @ 3538'

Plug #1: 3538' – 3438'
Cement with 10 sxs

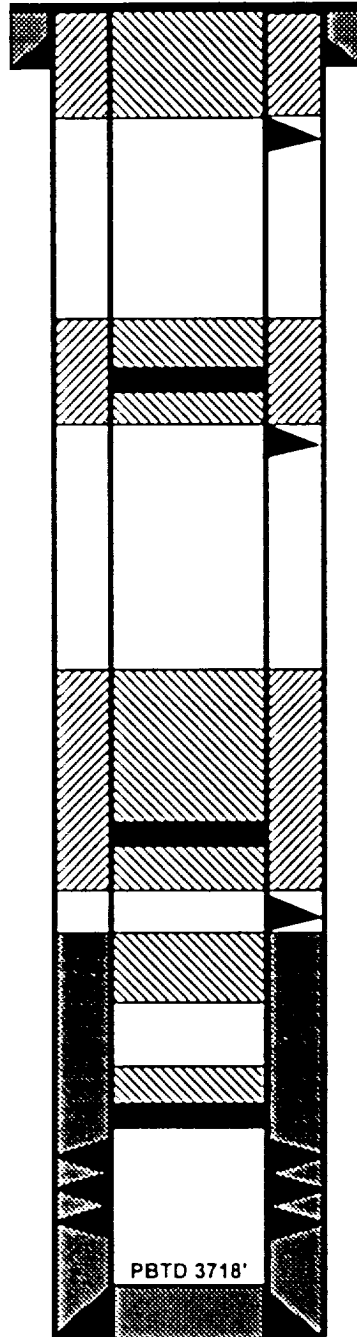
Chacra Perforations:
3588' – 3608'

6-3/4" hole

2-7/8" 6.4#, J-55 Casing set @ 3729'
Cemented with 463 cf

PBTD 3718'

TD 3729'



BLM CONDITIONS OF APPROVAL

The following surface rehabilitation Conditions of Approval must be complied with as applicable, before this well can be approved for final abandonment (see 43 CFR 3162.3-4). Surface rehabilitation work shall be completed within one year of the actual plugging date. Notification for completion of this work should be submitted with a Sundry Notice. Questions? Call Pat Hester at (505) 761-8786.

1. All fences, production equipment, purchaser's equipment, concrete slabs, deadman (anchors), flowlines, risers, debris and trash must be removed from the location. Non-retrieved flowlines and pipelines will be abandoned in accordance with State Rule 714. Information supporting the non-retrieval will be included in the subsequent report or final abandonment Sundry Notice.

2. Production pits will be closed according to the Unlined Surface Impoundment Closure Guidelines, as approved in the Environmental Assessment of December 1993. Any oil stained soils can be remediated on-site according to these guidelines or disposed of in an approved facility.

3. The well pad will be shaped to the natural terrain and left as rough as possible. All compacted areas and areas devoid of vegetation shall be ripped to a minimum of 12" in depth before reseeding.

4. Access roads will be shaped to conform to the natural terrain and left as rough as possible to deter vehicle travel. Access will be ripped to a minimum of 12" in depth, water barred and reseeded. All erosion problems created by the development must be corrected prior to acceptance of release. Water bars should be spaced as shown below along the fall line of the slope:

% Slope	Spacing Interval
Less than 20%	200'
2 to 5 %	150'
6 to 9 %	100'
10 to 15 %	50'
Greater than 15%	30'

5. All disturbed areas will be seeded with the prescribed certified seed mix (reseeding may be required). Seed mix must be certified weed free to avoid the introduction of noxious weeds. Refer to the original APD for seed mix.

6. Notify Surface Managing Agency seven (7) days prior to seeding so that they may be present to witness.

7. The period of liability under the bond of record will not be terminated until the well is inspected and the surface rehabilitation approved.

Other Surface Managing Agencies (SMA's) may vary slightly in their restoration requirements. It is your responsibility, as the operator, to obtain surface restoration requirements from other SMA's. We need to be provided with a copy of these requirements. Any problems concerning stipulations received from other SMA's should be brought to us. On private land, a letter from the fee owner stating that the surface restoration is satisfactory will be provided to the office. Questions? Call Pat Hester at (505) 761-8786.

IN REPLY REFER TO
3162.3-1 (017)

UNITED STATES DEPARTMENT OF THE INTERIOR

BUREAU OF LAND MANAGEMENT
Albuquerque Field Office
435 Montano N.E.
Albuquerque, New Mexico 87107

Company Energen Resources Corporation

Well No. Jicarilla 67 No. 13

Location 1650' FSL & 1650' FWL Sec. 20, T25N, R5W, NMPM

Lease No. Jicarilla Contract 67

Government Contacts:

Bureau of Land Management , Albuquerque Field Office Office 505.761.8700

Manager: Steve Anderson, Assistant Field Manager 505.761.8982

Petroleum Engineer: Brian W. Davis 505.761.8756, Home 505.323-8698,
Pager 505.381.0346, Cell 505.249.7922,

Petroleum Engineering Technician: **Bryce Hammon, Office 505.759.1823, x-31, Cell 505.320.9741**

BLM Geology / Environmental Contact: Patricia M. Hester 505.761.8786

GENERAL REQUIREMENTS
FOR
OIL AND GAS OPERATIONS FEDERAL & INDIAN LEASES

1. Plugging operations authorized are subject to the "General Requirements for Permanent Abandonment of Wells on Federal and Indian Leases."
2. For wells on Indian leases, Bryce Hammond with the Jicarilla Nation Tribal Oil and Gas Office is to be notified at least 24 hours (48 hours if possible) before the plugging operations commence. His phone number is (505) 759-1823, x-31 office, (505) 320-9741 cell. Office hours are 7:45 a.m. to 4:30 p.m.
3. Blowout prevention equipment is required.
4. The following modifications to your plugging program are to be made :

N/A