

**NEW MEXICO OIL CONSERVATION COMMISSION
WELL LOCATION AND ACERAGE DEDICATION PLAT**

All distances must be from the outer boundaries of the Section

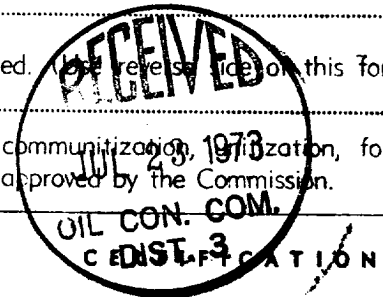
Operator BENSON-MONTIN-GREER DRILLING CORP.		Lease CANADA OJITOS UNIT		Well No. 20-X (H-9)	
Unit Letter H	Section 9	Township 25NORTH	Range 1 WEST	County RIO ARriba	
Actual Footage Location of Well: 1450 feet from the NORTH line and 890 feet from the EAST line					
Ground Level Elev. 7357.0	Producing Formation PICTURED CLIFFS	Pool WILDCAT	Dedicated Acreage: 160 Acres		

1. Outline the acreage dedicated to the subject well by colored pencil or hatchure marks on the plat below.
2. If more than one lease is dedicated to the well, outline each and identify the ownership thereof (both as to working interest and royalty).
3. If more than one lease of different ownership is dedicated to the well, have the interests of all owners been consolidated by communitization, unitization, force-pooling, etc?

() Yes () No If answer is "yes," type of consolidation

If answer is "no," list the owners and tract descriptions which have actually consolidated. (If reverse side of this form if necessary.)

No allowable will be assigned to the well until all interests have been consolidated (by communitization, unitization, forced-pooling, or otherwise) or until a non standard unit, eliminating such interests, has been approved by the Commission.

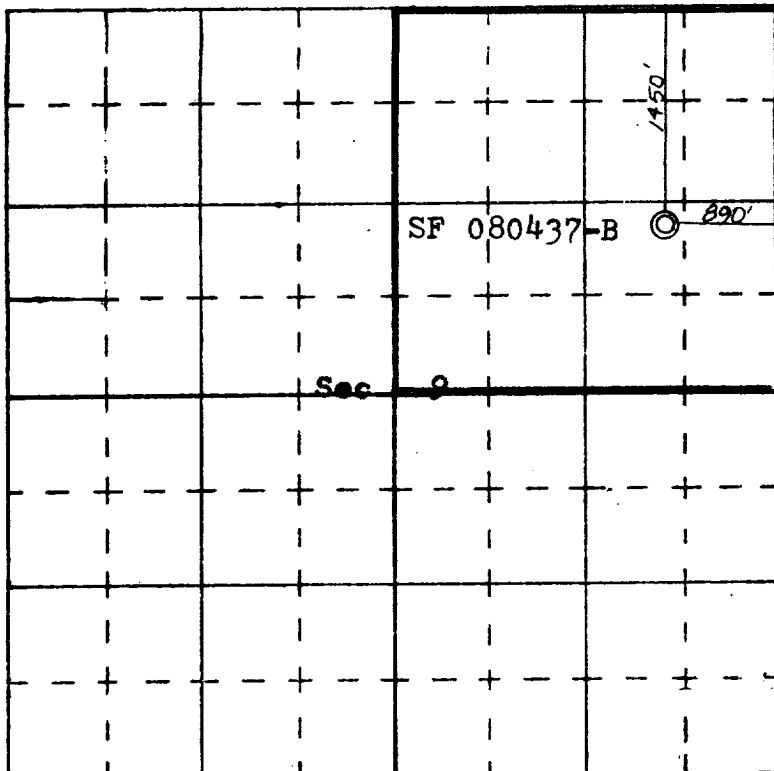


I hereby certify that the information contained herein is true and complete to the best of my knowledge and belief.

Name *[Signature]*
 Position VICE-PRESIDENT
 Company BENSON-MONTIN-GREER
 Date 7-20-73
DRIG. CORP.

I hereby certify that the well location shown on this plat was plotted from field notes of actual surveys made by me or under my supervision, and that the same is true and correct to the best of my knowledge and belief.

Date Surveyed 7-20-73
 Registered Professional Engineer and/or Land Surveyor 1463
JAMES P. LEESE
 Certificate No. _____



SCALE—4 INCHES EQUALS 1 MILE

SAN JUAN ENGINEERING COMPANY, FARMINGTON, N. M.