

NEW MEXICO OIL CONSERVATION COMMISSION

WELL LOCATION AND ACERAGE DEDICATION PLAT

All distances must be from the outer boundaries of the Section

Operator EL PASO NATURAL GAS COMPANY		Lease LINDRITH UNIT (FEE)		Well No. 73
Unit Letter G	Section 19	Township 24 NORTH	Range 2 WEST	County RIO ARriba
Actual Footage Location of Well: <div style="display: flex; justify-content: space-between;"> 1785 feet from the NORTH line or 1815 feet from the EAST line </div>				
Ground Level Elev. 7078.0	Producing Formation PICTURED CLIFFS	Pool SO. BIANCO PICTURED CLIFFS	Dedicated Acreage: 160.00 Acres	

1. Outline the acreage dedicated to the subject well by colored pencil or hachure marks on the plat below.

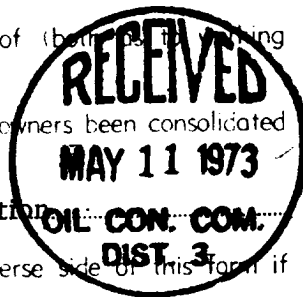
2. If more than one lease is dedicated to the well, outline each and identify the ownership thereof (both as to working interest and royalty),

3. If more than one lease of different ownership is dedicated to the well, have the interests of all owners been consolidated by communization, unitization, force-pooling, etc?

(☒ Yes () No If answer is "yes," type of consolidation Unitization

If answer is "no," list the owners and tract descriptions which have actually consolidated. (Use reverse side of this form if necessary)

No allowable will be assigned to the well until all interests have been consolidated (by communization, unitization, forced-pooling, or otherwise) or until a non standard unit, eliminating such interests, has been approved by the Commission.



CERTIFICATION

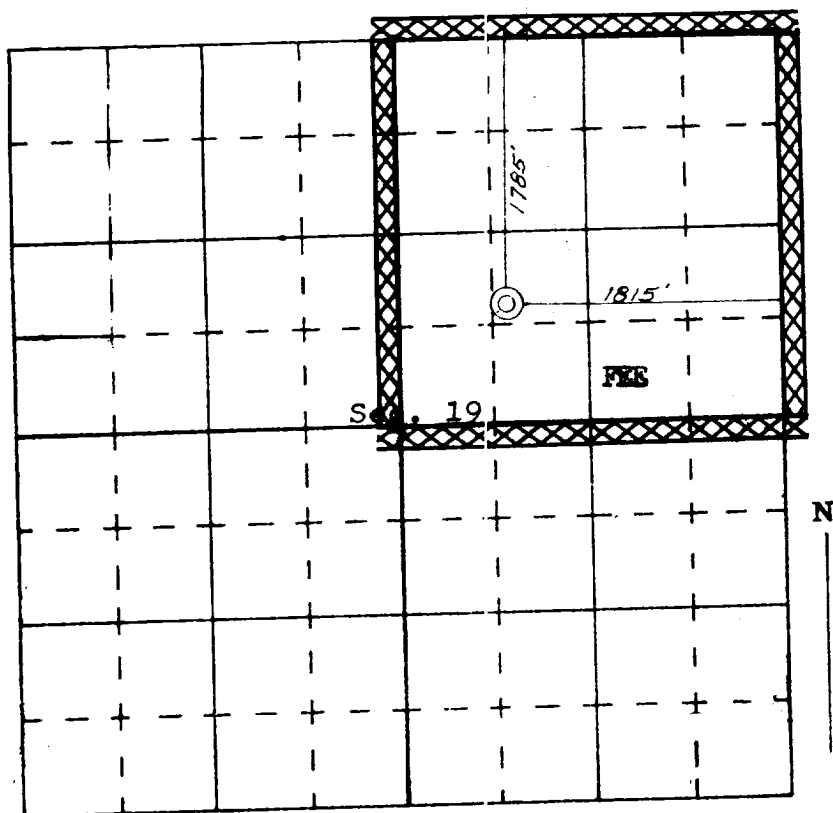
I hereby certify that the information contained herein is true and complete to the best of my knowledge and belief.

Original Signed by

Name D. G. Brisco
 Position Drilling Clerk
 Company El Paso Natural Gas Company
 Date May 11, 1973

I hereby certify that the well location shown on this plat was plotted from field notes of actual surveys made by me or under my supervision, and that the same is true and correct to the best of my knowledge and belief.

Date Surveyed 7 May 1973
 Registered Professional Engineer
 and/or Land Surveyor
JAMES P. LEESE
 2483
 Certificate No.



SCALE—4 INCHES EQUALS 1 MILE

SAN JUAN ENGINEERING COMPANY, FARMINGTON, N. M.