

UNITED STATES
DEPARTMENT OF THE INTERIOR
GEOLOGICAL SURVEY

APPLICATION FOR PERMIT TO DRILL, DEEPEN, OR PLUG BACK

1a. TYPE OF WORK

DRILL ☒DEEPEN ☐PLUG BACK ☐

b. TYPE OF WELL

OIL
WELL ☐GAS
WELL ☒

OTHER

SINGLE
ZONE ☐MULTIPLE
ZONE ☐

2. NAME OF OPERATOR

Continental Oil Company

3. ADDRESS OF OPERATOR

152 North Durbin St., Casper, Wyoming 82601

4. LOCATION OF WELL (Report location clearly and in accordance with any State requirements.)*

At surface

1190' FSL, 1850' FEL (SW SE)

At proposed prod. zone

14. DISTANCE IN MILES AND DIRECTION FROM NEAREST TOWN OR POST OFFICE*

15. DISTANCE FROM PROPOSED*

LOCATION TO NEAREST

PROPERTY OR LEASE LINE, FT.

(Also to nearest drlg. unit line, if any)

18. DISTANCE FROM PROPOSED LOCATION*

TO NEAREST WELL, DRILLING, COMPLETED,
OR APPLIED FOR, ON THIS LEASE, FT.

16. NO. OF ACRES IN LEASE

19. PROPOSED DEPTH

4000'

17. NO. OF ACRES ASSIGNED
TO THIS WELL

20. ROTARY OR CABLE TOOLS

Rotary

21. ELEVATIONS (Show whether DF, RT, GR, etc.)

7200' GR

22. APPROX. DATE WORK WILL START*

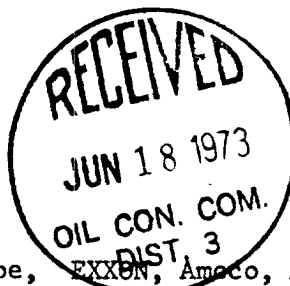
July 20, 1973

23.

PROPOSED CASING AND CEMENTING PROGRAM

SIZE OF HOLE	SIZE OF CASING	WEIGHT PER FOOT	SETTING DEPTH	QUANTITY OF CEMENT
12 1/4"	8 5/8"	24 #	200'	150 sacks
7 7/8"	4 1/2"	10.5#	4000'	100 sacks

It is proposed to drill the subject well to further develop and outline the Pictured Cliffs formation on this lease. No cores or DST's are planned. All appropriate logs will be run. The drilling rig will be equipped with a blowout preventer which will be tested daily.



USGS(4) NMOCC(2) Jicarilla Apache Tribe, EXXON, Amoco, Aztec, File(2)

IN ABOVE SPACE DESCRIBE PROPOSED PROGRAM: If proposal is to deepen or plug back, give data on present productive zone and proposed new productive zone. If proposal is to drill or deepen directionally, give pertinent data on subsurface locations and measured and true vertical depths. Give blowout preventer program, if any.

24.

SIGNED

J. A. Ubben

TITLE Administrative Supervisor

DATE

6/14/73

(This space for Federal or State office use)

PERMIT NO.

APPROVAL DATE

APPROVED BY

Ed

TITLE

DATE

CONDITIONS OF APPROVAL, IF ANY:

NEW MEXICO OIL CONSERVATION COMMISSION
WELL LOCATION AND ACERAGE DEDICATION PLAT

All distances must be from the outer boundaries of the Section

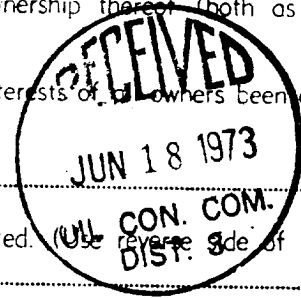
Operator CONTINENTAL OIL COMPANY			Lease AXI APACHE		N	Well No 9
Unit Letter 0	Section 11	Township 25 NORTH	Range 4 WEST	County RIO ARriba		
Actual Footage Location of Well: 1190 feet from the SOUTH line and 1850 feet from the EAST line						
Ground Level Elev 7200.0		Producing Formation South Blanco - Pictured Cliffs		Dedicated Acreage 160 Acres		

1. Outline the acreage dedicated to the subject well by colored pencil or hatchure marks on the plat below.
2. If more than one lease is dedicated to the well, outline each and identify the ownership thereof (both as to working interest and royalty),
3. If more than one lease of different ownership is dedicated to the well, have the interests of all owners been consolidated by communitization, unitization, force-pooling, etc?

() Yes () No If answer is "yes," type of consolidation _____

If answer is "no," list the owners and tract descriptions which have actually consolidated. (Use reverse side of this form if necessary.) _____

No allowable will be assigned to the well until all interests have been consolidated (by communitization, unitization, forced-pooling, or otherwise) or until a non standard unit, eliminating such interests, has been approved by the Commission.



CERTIFICATION

I hereby certify that the information contained herein is true and complete to the best of my knowledge and belief.

John A. Ubben
 Name _____

John A. Ubben
 Position _____

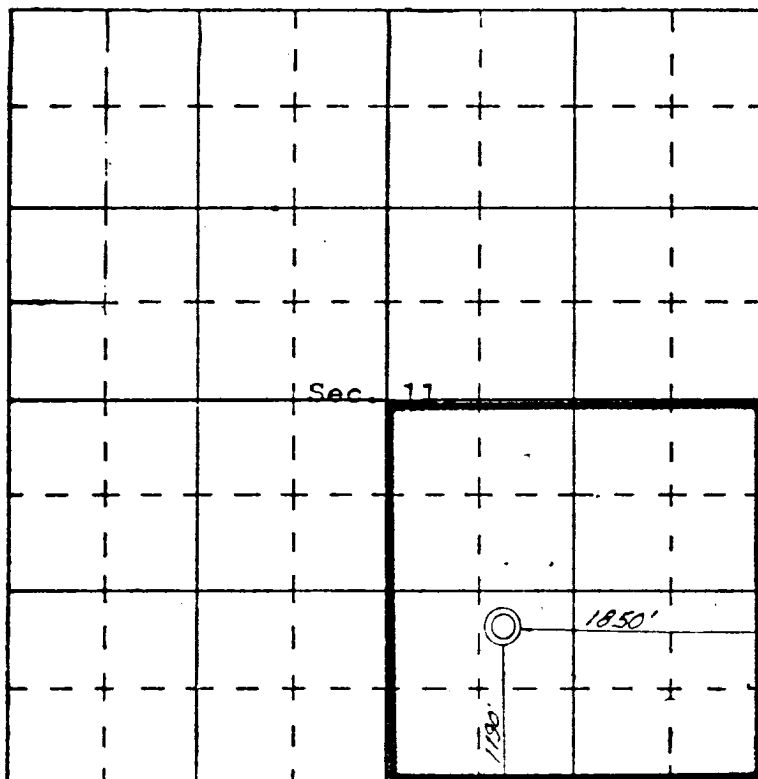
Administrative Supervisor
 Company _____

Continental Oil Company
 Date _____

June 14, 1973

I hereby certify that the well location shown on this plat was plotted from field notes of actual surveys made by me or under my supervision, and that the same is true and correct to the best of my knowledge and belief.

June 18, 1973
 Date Surveyed _____
James P. Leese
 Registered Professional Engineer
 and/or Land Surveyor
JAMES P. LEESE
1463
 Certificate No. _____



SCALE—4 INCHES EQUALS 1 MILE

SAN JUAN ENGINEERING COMPANY, FARMINGTON, N. M.