

# El Paso Natural Gas Company

El Paso, Texas 79978

October 8, 1973

ADDRESS REPLY TO  
POST OFFICE BOX 990  
FARMINGTON NEW MEXICO 87401

Mr. Jerry Long  
U. S. Geological Survey  
Post Office Box 1809  
Durango, Colorado 81301

Re: Application for Permit to Drill  
Canyon Largo Unit #238  
NENE/4 Section 12, T-25-N, R-6-W  
Gonzales Mesa Verde Ext. ✓

Dear Mr. Long:

Details regarding existing roads, pipelines, wells, etc. relative to the above well location are included on the previously submitted base maps, "Field Road Map" and "Composite Map No. 1".

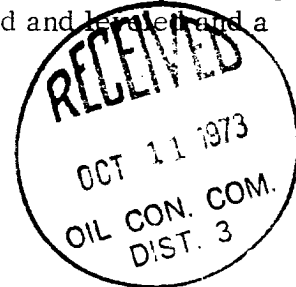
The proposed new well location, new roads and new pipeline are shown on the attached plat along with connecting existing roads and pipelines in the vicinity of the proposed new well.

Water for drilling and completion operations will be obtained from a water well located in Section 3, T-25-N, R-6-W. Waste material will be disposed of by burial in the burn pit, latrine, or reserve pit as applicable. There will be no camp nor air strip associated with drilling this well. Upon completion or abandonment of this well, the location will be cleaned and leveled and a dry hole marker placed, if applicable.

Yours truly,



D. G. Brisco  
Drilling Clerk



pb

UNITED STATES  
DEPARTMENT OF THE INTERIOR  
GEOLOGICAL SURVEY

10 - 273 - 30 1973

## APPLICATION FOR PERMIT TO DRILL, DEEPEN, OR PLUG BACK

## 1a. TYPE OF WORK

DRILL ☒DEEPEN ☐PLUG BACK ☐

## b. TYPE OF WELL

OIL  
WELL ☐GAS  
WELL ☒

OTHER

SINGLE  
ZONE ☒MULTIPLE  
ZONE ☐

## 2. NAME OF OPERATOR

El Paso Natural Gas Company

## 3. ADDRESS OF OPERATOR

PO Box 990, Farmington, NM 87401

## 4. LOCATION OF WELL (Report location clearly and in accordance with any State requirements.)\*

At surface

890'N, 800'E

At proposed prod. zone

## 14. DISTANCE IN MILES AND DIRECTION FROM NEAREST TOWN OR POST OFFICE\*

## 15. DISTANCE FROM PROPOSED\*

LOCATION TO NEAREST  
PROPERTY OR LEASE LINE, FT.  
(Also to nearest drlg. unit line, if any)

## 16. NO. OF ACRES IN LEASE

17. NO. OF ACRES ASSIGNED  
TO THIS WELL

320.00

18. DISTANCE FROM PROPOSED LOCATION\*  
TO NEAREST WELL, DRILLING, COMPLETED,  
OR APPLIED FOR, ON THIS LEASE, FT.

## 19. PROPOSED DEPTH

5235'

## 20. ROTARY OR CABLE TOOLS

Rotary

## 21. ELEVATIONS (Show whether DF, RT, GR, etc.)

6693'GR

## 22. APPROX. DATE WORK WILL START\*

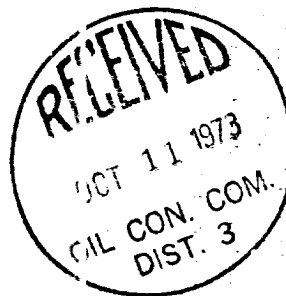
## 23.

## PROPOSED CASING AND CEMENTING PROGRAM

SIZE OF HOLE	SIZE OF CASING	WEIGHT PER FOOT	SETTING DEPTH	QUANTITY OF CEMENT
12 1/4"	8 5/8"	24.0#	120'	110 cu. ft. to circulate to surface
7 7/8"	4 1/2"	10.5#	5235'	1040 cu. ft. to cover Ojo Alamo

Selectively perforate and sandwater fracture the Mesa Verde formation.

The E/2 of Section 12 is dedicated to this well.



IN ABOVE SPACE DESCRIBE PROPOSED PROGRAM: If proposal is to deepen or plug back, give data on present productive zone and proposed new productive zone. If proposal is to drill or deepen directionally, give pertinent data on subsurface locations and measured and true vertical depths. Give blowout preventer program, if any.

## 24.

SIGNED

TITLE Drilling Clerk

DATE October 9, 1973

(This space for Federal or State office use)

PERMIT NO.

APPROVAL DATE

APPROVED BY

TITLE

DATE

CONDITIONS OF APPROVAL, IF ANY:

\*See Instructions On Reverse Side

1. *Journal of the American Medical Association*, 1997; 277: 1033-1038.

236

RIO ARRIBA

EAST

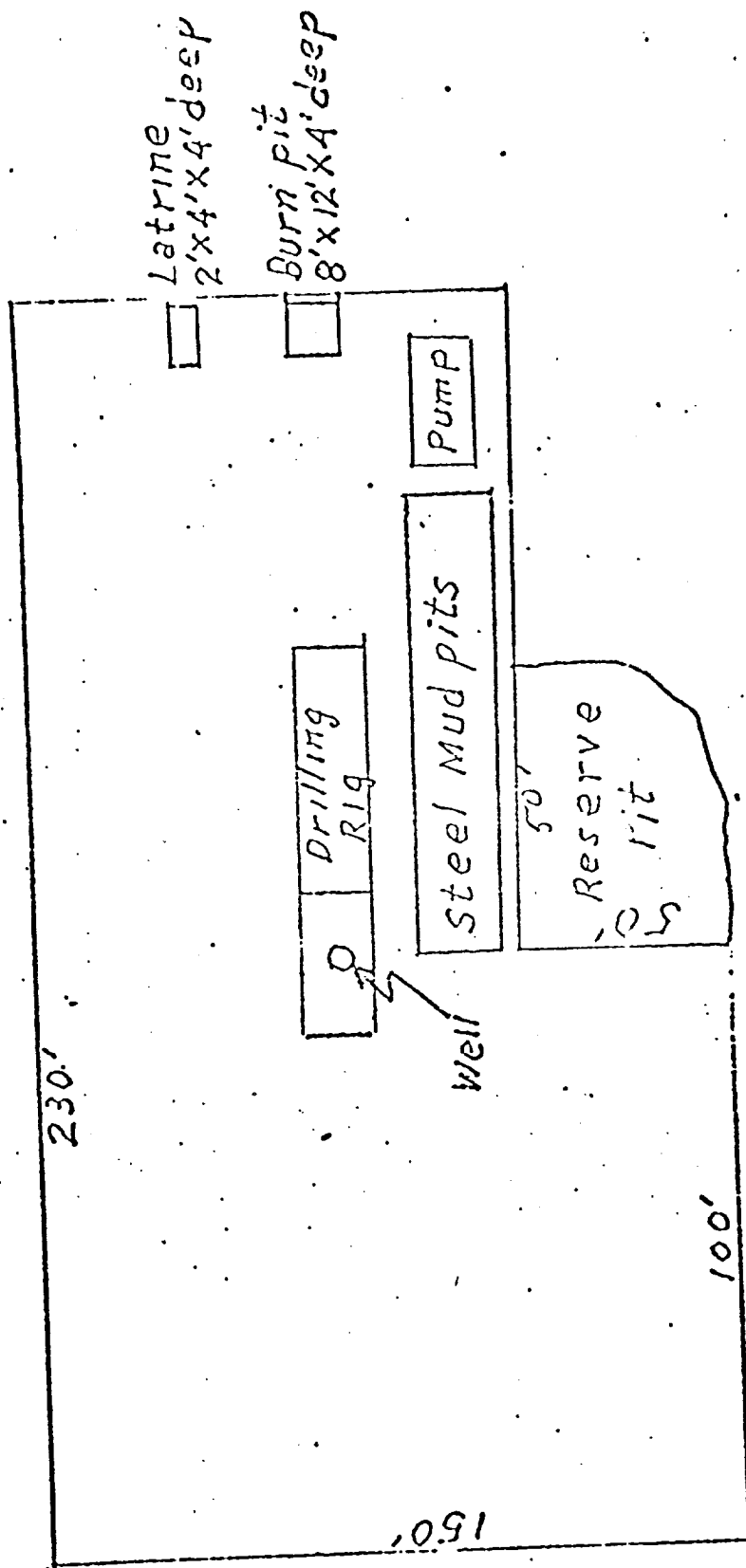
320.00

- RECEIVED AT MID. COM. ON 11-11-73. 7-5-73

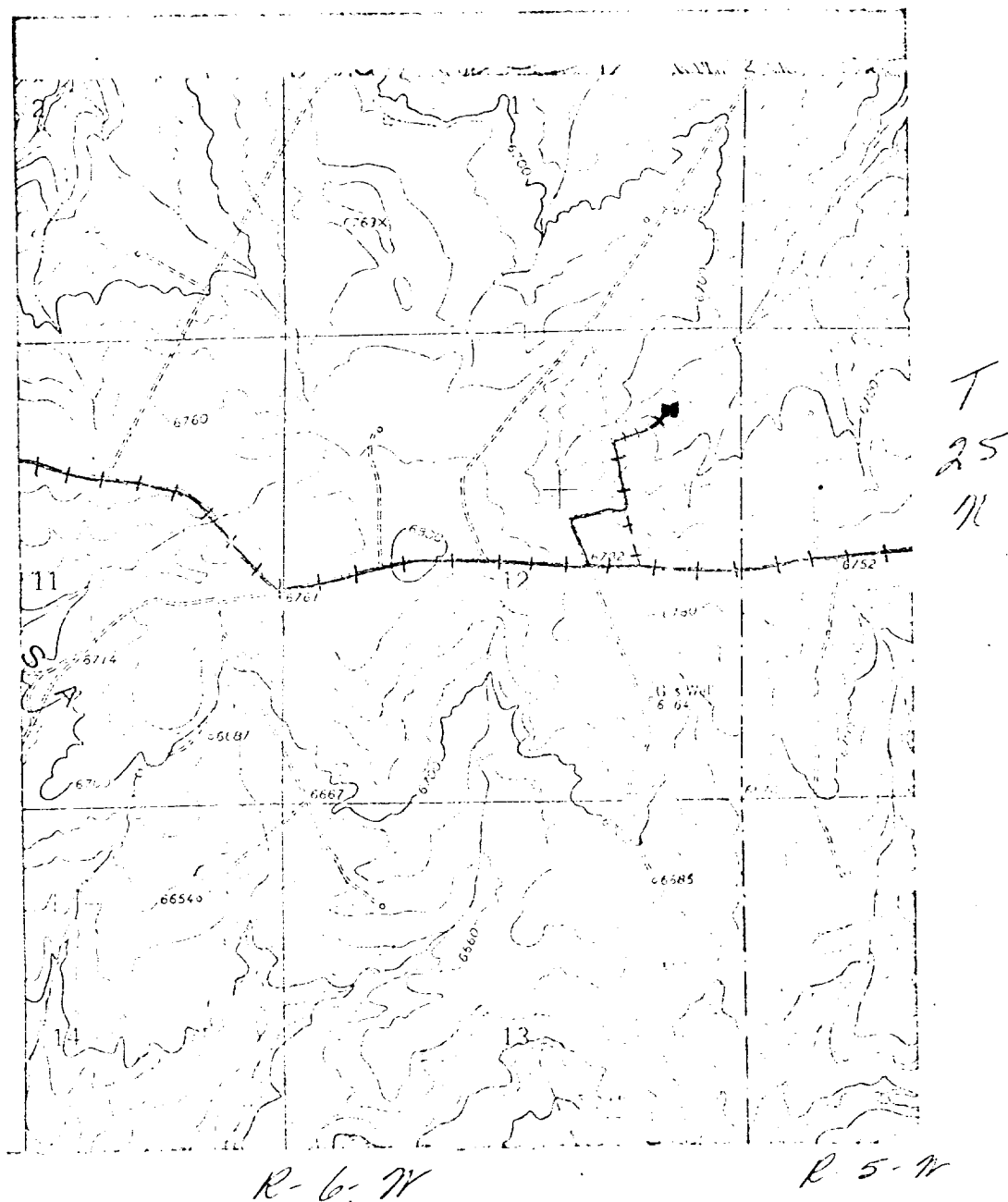
1760

LOCATION AND EQUIPMENT LAY-OUT

CANYON Largo Unit No. 238



CANYON Largo Unit No. 238  
NE 1/4 Sec. 12 T-25N, R-6W



LEGEND OF RIGHT-OF-WAYS

EXISTING ROADS	—
EXISTING PIPELINES	++++
EXISTING ROAD & PIPELINE	++++
PROPOSED ROADS	—
PROPOSED PIPELINES	++++
PROPOSED ROAD & PIPELINE	++++